

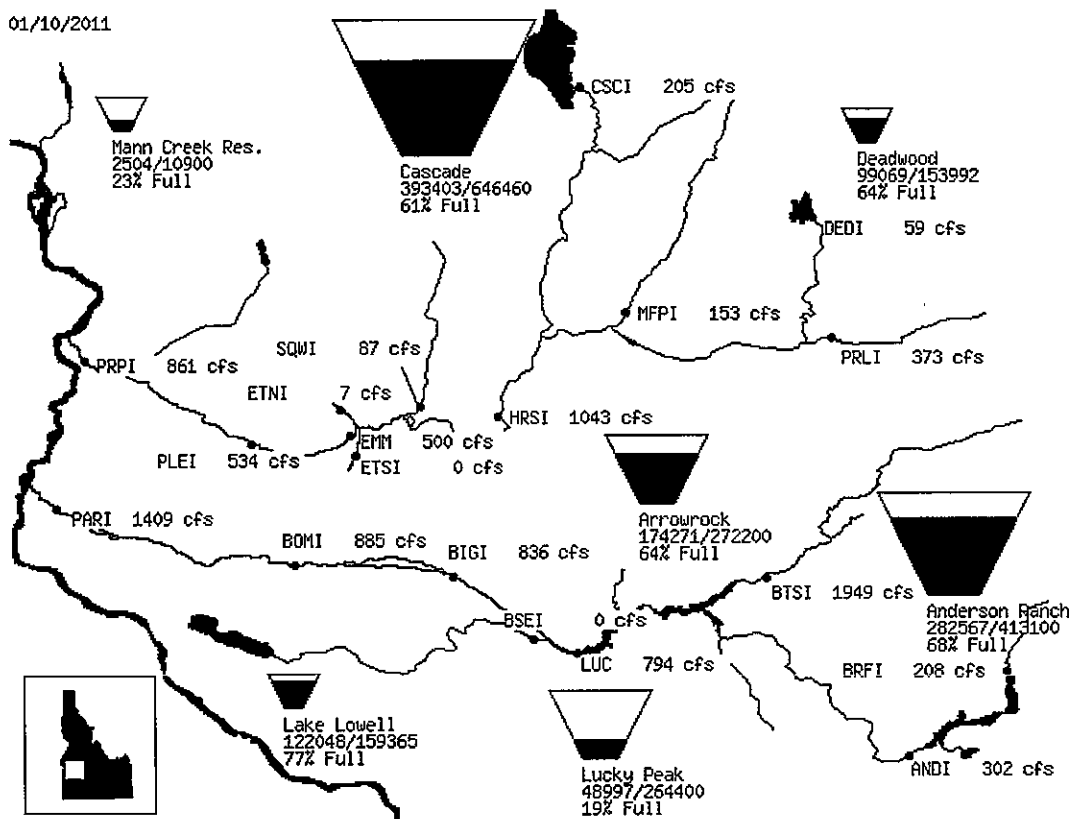
[Reclamation Home](#) | [Regional Offices](#) | [Newsroom](#) | [Library](#)
[Projects & Facilities](#) | [About Us](#) | [Program & Activities](#) | [Water Operations](#)
[Hydromet Home](#) | [Reservoir Storage](#) | [Boat Ramps](#) | [Current Data](#) | [Historical Data](#)

Search Reclamation



Bureau of Reclamation, Pacific Northwest Region Major Storage Reservoirs in the Boise & Payette River Basins

01/10/2011



PROVISIONAL DATA - SUBJECT TO CHANGE!

Boise River system (Anderson Ranch, Arrowrock, Lucky Peak) is at 53 % of capacity.

Total space available: 443864 AF
 Total storage capacity: 949700 AF
 Natural Flow: 862 CFS

Payette River system (Cascade, Deadwood) is at 62 % of capacity.

Total space available: 307980 AF
 Total storage capacity: 800452 AF
 Natural Flow: 1156 CFS

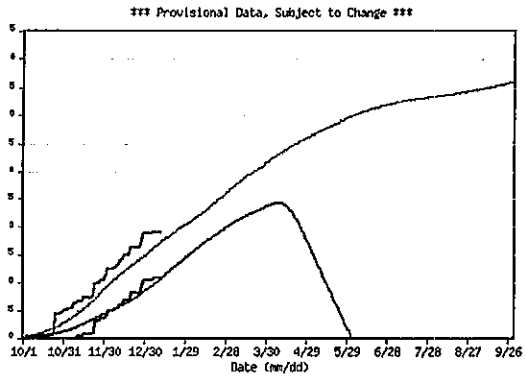
[Graph of Boise System Storage](#)

[Graph of Payette System Storage](#)

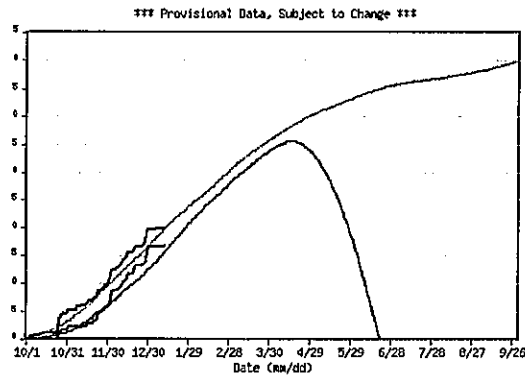
Average daily streamflows indicated in cubic feet per second.
 Reservoir levels current as of midnight on date indicated.
 Click on gaging stations (red dots) for streamflow hydrographs.

[Key to Station Codes](#)
[Boise Project Information](#)

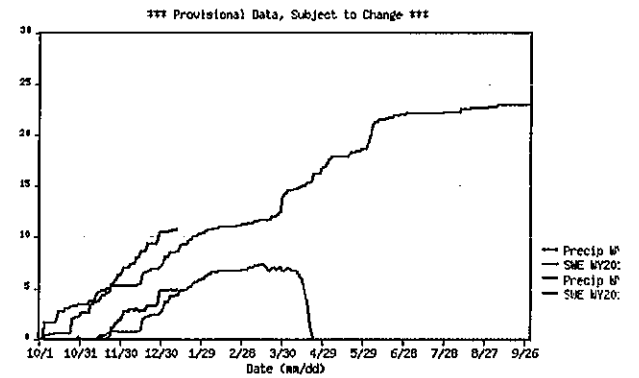
SQUAW FLAT SNOTEL for Water Year 2011



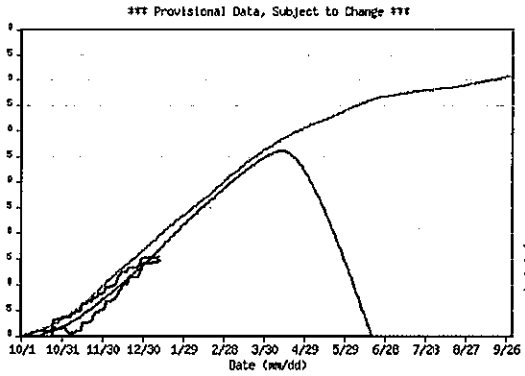
BIG CREEK SUMMIT SNOTEL for Water Year 2011



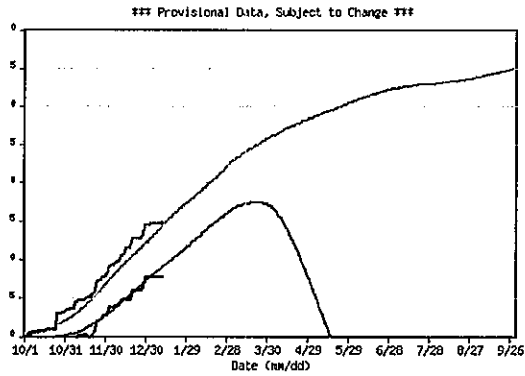
LONG VALLEY SNOTEL as of 01/11/2011



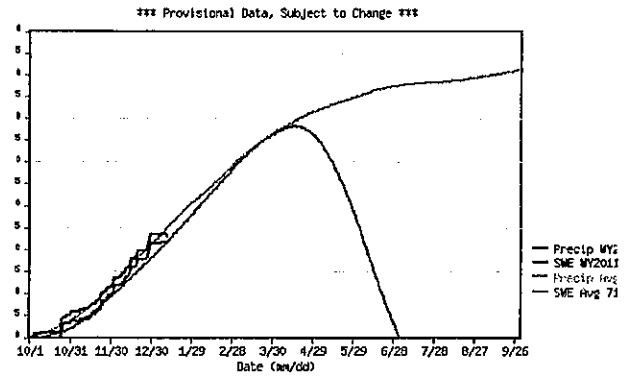
SECESH SUMMIT SNOTEL for Water Year 2011



COZY COVE SNOTEL for Water Year 2011

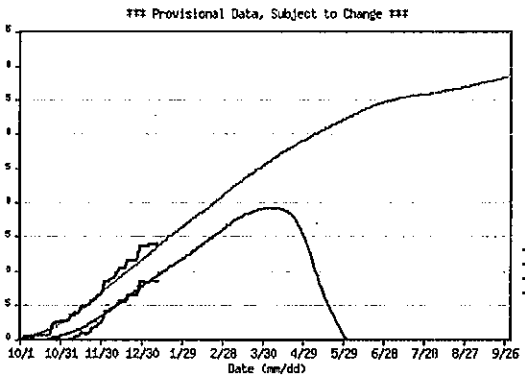


DEADWOOD SUMMIT SNOTEL for Water Year 2011

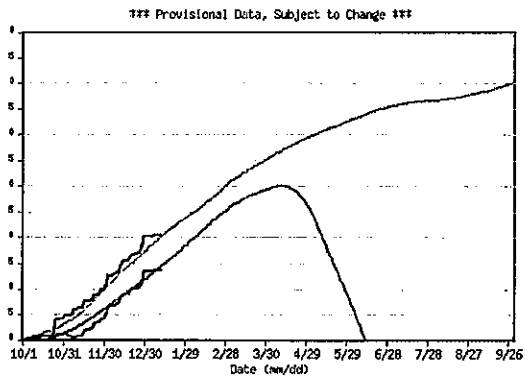


-36-

BEAR BASIN SNOTEL for Water Year 2011



BRUNDAGE RESERVOIR SNOTEL for Water Year 2011



BANNER SUMMIT SNOTEL for Water Year 2011

