

RECEIVED

NOV 05 2009

DEPARTMENT OF
WATER RESOURCES

WD
Western Mortgage and Realty, Co.

To: Idaho Department of Water Resources
C/O Tim Luke
322 East Front Street
PO Box 83720
Boise, Id 83720-0098

From: Western Mortgage and Realty, Co. (Land Owner)
Pasco Farming, Inc. (Land Operator)
Steven D Young
Idaho Manager

November 4, 2009

Subject: Order Requiring Measuring Devices in Water District No. 130

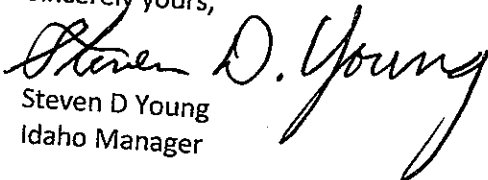
Dear Sir:

Steven D Young & Maria Young, Bruce Hunsaker, Northride LLC, Young & Young of Idaho, Inc. and affiliated companies have sold their Land to Western Mortgage and Realty, Co. owned by Frank Tiegs and managed by Tim Tippet (800-897-2726). The name change has been completed, if you have any questions please contact Allen Merrit in the IDWR Twin Falls Office.

Enclosed for your information is a map of the farm ground which is being farmed. Each map has the wells marked clearly with a red and white circle marker. I have drawn around the ground that each well waters. Please notice that each individual well waters exactly the same ground every year and only in one crop each year. I have an excellent relationship with Brian Higgs who works for the Magic Valley Ground Water District and he has measured every single well and we have authorized him to access the Idaho Power records and from this he can calculate how much water we use each and every year. Please understand that several of our systems are multiple pivot systems but with all pivots in that system in exactly the same crop and when the well runs, all pivots run 100% of the time on that system. I will assume and have been told that this qualifies for accurate reporting for our water uses etc.

Hopefully this will serve as a formal request in relation to section 42-701 Idaho Code paragraph 2 for us to be able to use Idaho Power records and 3rd party evaluation of usage. If you have any other questions, please do not hesitate to call me so that we can discuss this further.

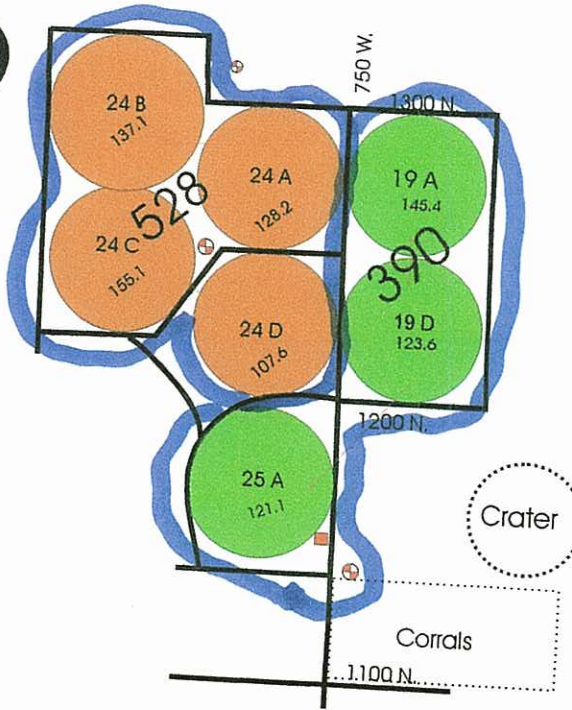
Sincerely yours,


Steven D Young
Idaho Manager

Storm Circle 2010

PIVOT ACRES FARMED
Oct 21, 2009

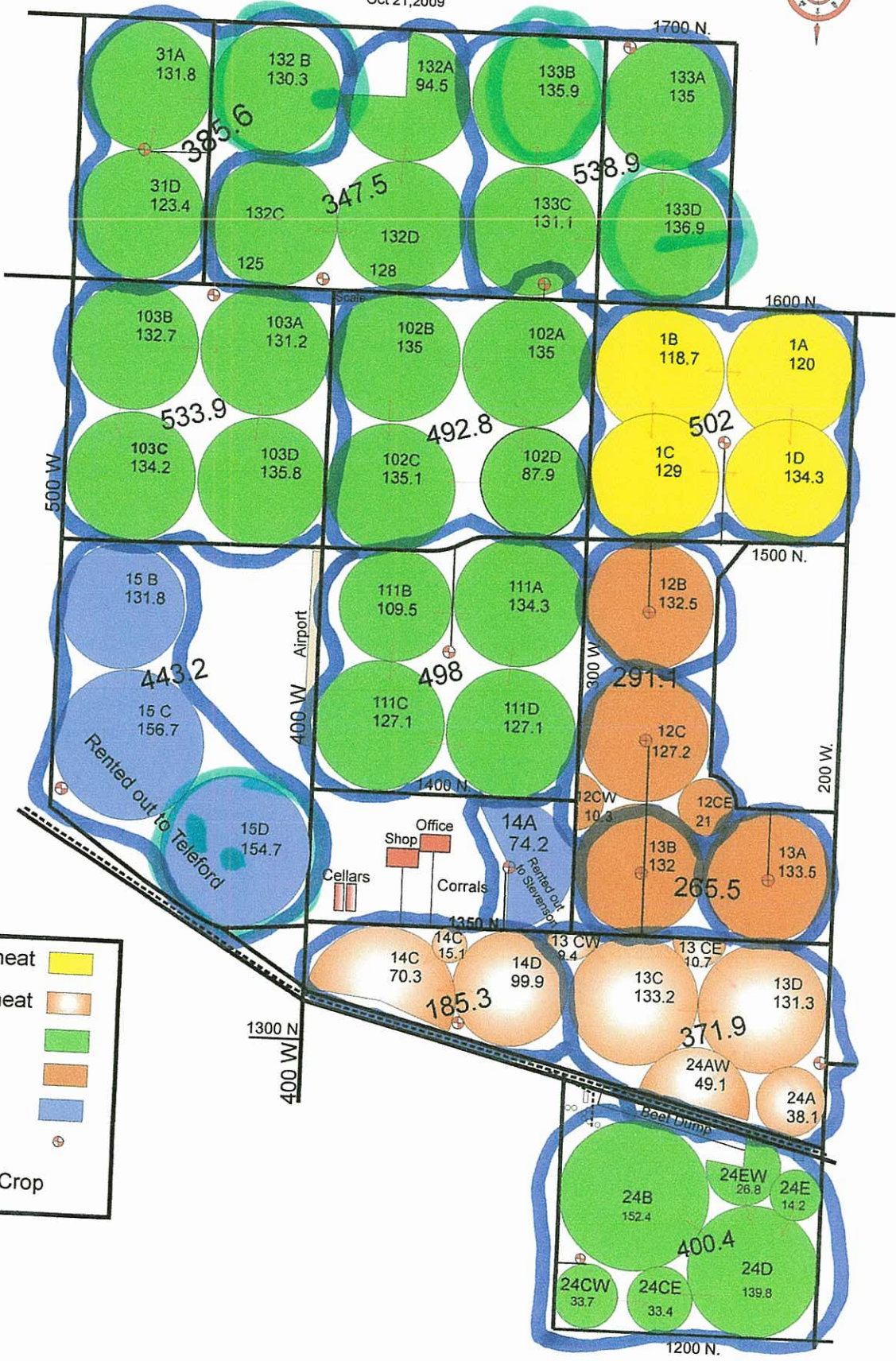
To: IDWR
From: Steve Young



KECO

2010

PIVOT ACRES FARMED
Oct 21, 2009



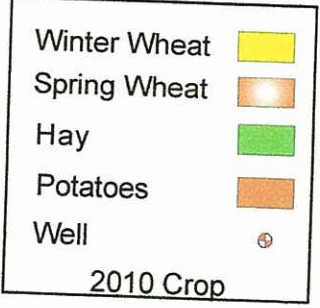
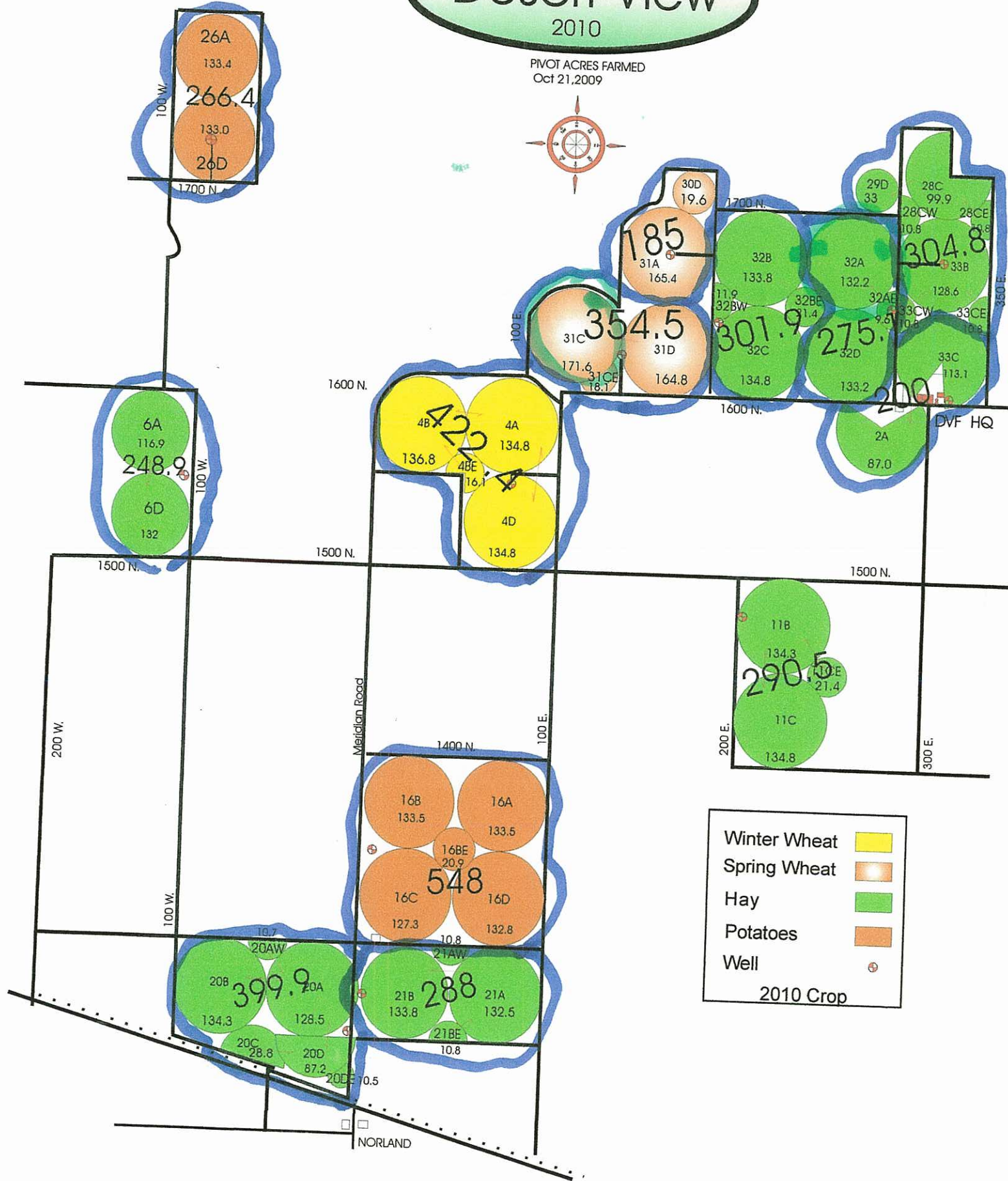
Winter Wheat	
Spring Wheat	
Hay	
Potatoes	
Rented	
Well	

2010 Crop

Desert View

2010

PIVOT ACRES FARMED
Oct 21, 2009



Main Line 2010

PIVOT FARMED ACRES
Oct 21, 2009



1st Year Hay	
Winter Wheat	
Spring Wheat	
Hay	
Potatoes	
Well	
2010 Crop	

