
MEMORANDUM

TO: BRIAN PATTON
FROM: TROY WINWARD
SUBJECT: CANYON SPRINGS PUMPBACK SITE VISIT
DATE: 12/12/2005

I visited the Canyon Springs fish hatchery facility to confirm the status of the installation of a pump back system (December 9, 2005). I met with David McCollum who showed me the components of the pump back system installed. Only the plumbing and back up generator have been installed due to lack of funds. The intake pipe at the end of the hatchery (14" immediately necking down to 12") is observed in Figure 1. This will be the location of the future pump. Electrical lines are already installed to this site. A six-inch discharge pipe, branched from the 12" mainline, is located at the head each of the six sets of raceways (Figure 1). In addition, the 12" mainline has a discharge location at the head of the raceways (Figure 2).



Figure 1. Planned Pump Installation Location.



Figure 2. Mainline Outlet at Head of the Raceways.

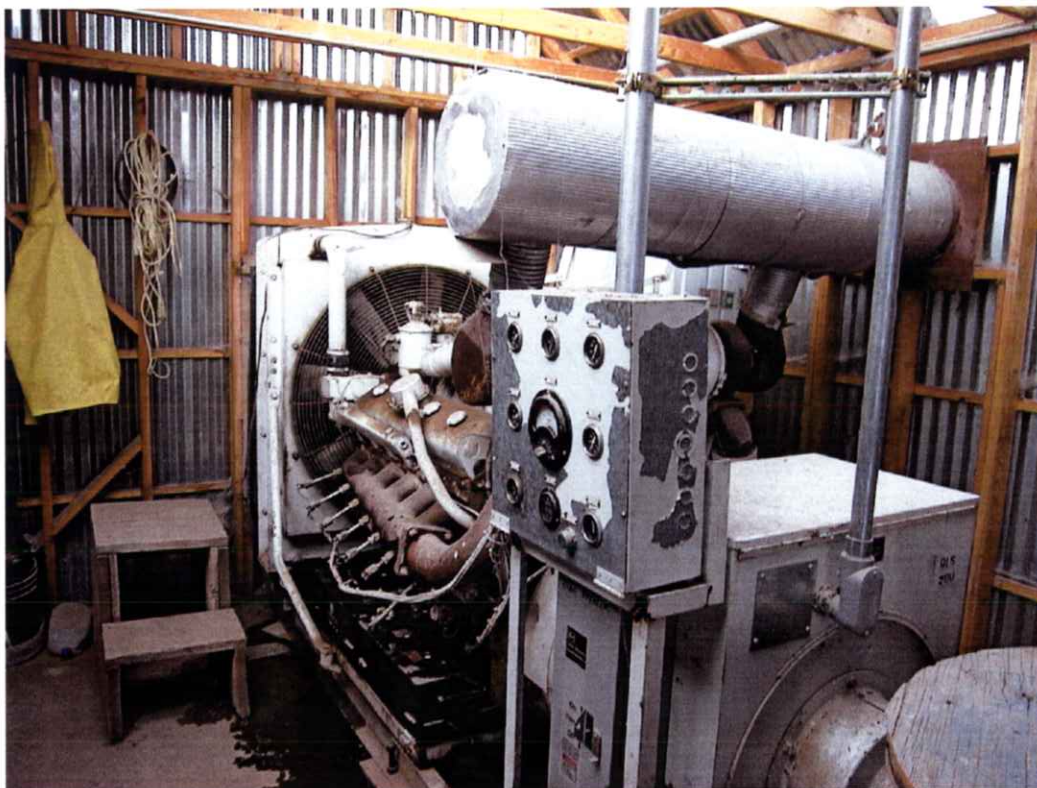


Figure 3. Back-up Generator.