



State of Idaho

TIM LUKE

**DEPARTMENT OF WATER RESOURCES**

1301 North Orchard Street, Boise, ID 83706 - P.O. Box 83720, Boise, ID 83720-0098  
Phone: (208) 327-7900 Fax: (208) 327-7866 Web Site: [www.idwr.state.id.us](http://www.idwr.state.id.us)

DIRK KEMPTHORNE  
Governor

KARL J. DREHER  
Director

May 24, 2002

Distribution: Bar S Ditch Water Distribution Representatives

RE: Meeting to Consider Delivery Into the Bar S Ditch

Dear Interested Parties:

On Tuesday, May 21, 2002, several parties met at the request of Dr. Ivan Gustafson to discuss the rate of flow diverted into Bar S Ditch. The discussion resulted in the preparation of:

1. A listing of water rights eligible for diversion into the ditch (Attachment A).
2. An initial sketch map on the white board (Attachment B).
3. A scale map of the area (Attachment C).

Based on the information available thus far, it appears that IDWR will be instructing the Watermaster to deliver into Bar S ditch 10.06 cfs, consisting of 6.5 cfs for water rights subject to the provisions of the Kramer stipulation plus 3.56 cfs for water rights held by parties not included in the Kramer stipulation.

This letter serves as an invitation for a follow-up meeting on the same topic, with the same attendees plus Mr. Bill Jones and Mr. Phil Gossi. The purposes of the meeting are to discuss the computation of the flow to be diverted into the Bar S ditch, and to consider pipeline alternatives. **The meeting has been scheduled to be held on Thursday, May 30, 2002 at 1:30 p.m. in the Conference Room of the IDWR Southern Regional Office, 1341 Fillmore St., Suite 200, Twin Falls.**

We look forward to discussing these issues with you at the meeting.

Sincerely,

A handwritten signature in black ink, appearing to read 'David R. Tuthill, Jr.' with a stylized flourish at the end.

David R. Tuthill, Jr., P.E.  
Adjudication Bureau Chief

Enclosures: Distribution List and Attachments

BAR S DITCH DELIVERY  
Mailing May 24, 2002

VERL BELL  
853 E 2830 S  
HAGERMAN ID 83332

BARBARA HOSKOVEC  
2856 S 900 E  
HAGERMAN ID 83332

SARAH SKAAR  
2795 S 900 E  
HAGERMAN ID 83332

DAN YORE  
18335 US 30  
HAGERMAN ID 83332

FRANK ERWIN  
2628 S 975 E  
HAGERMAN ID 83332

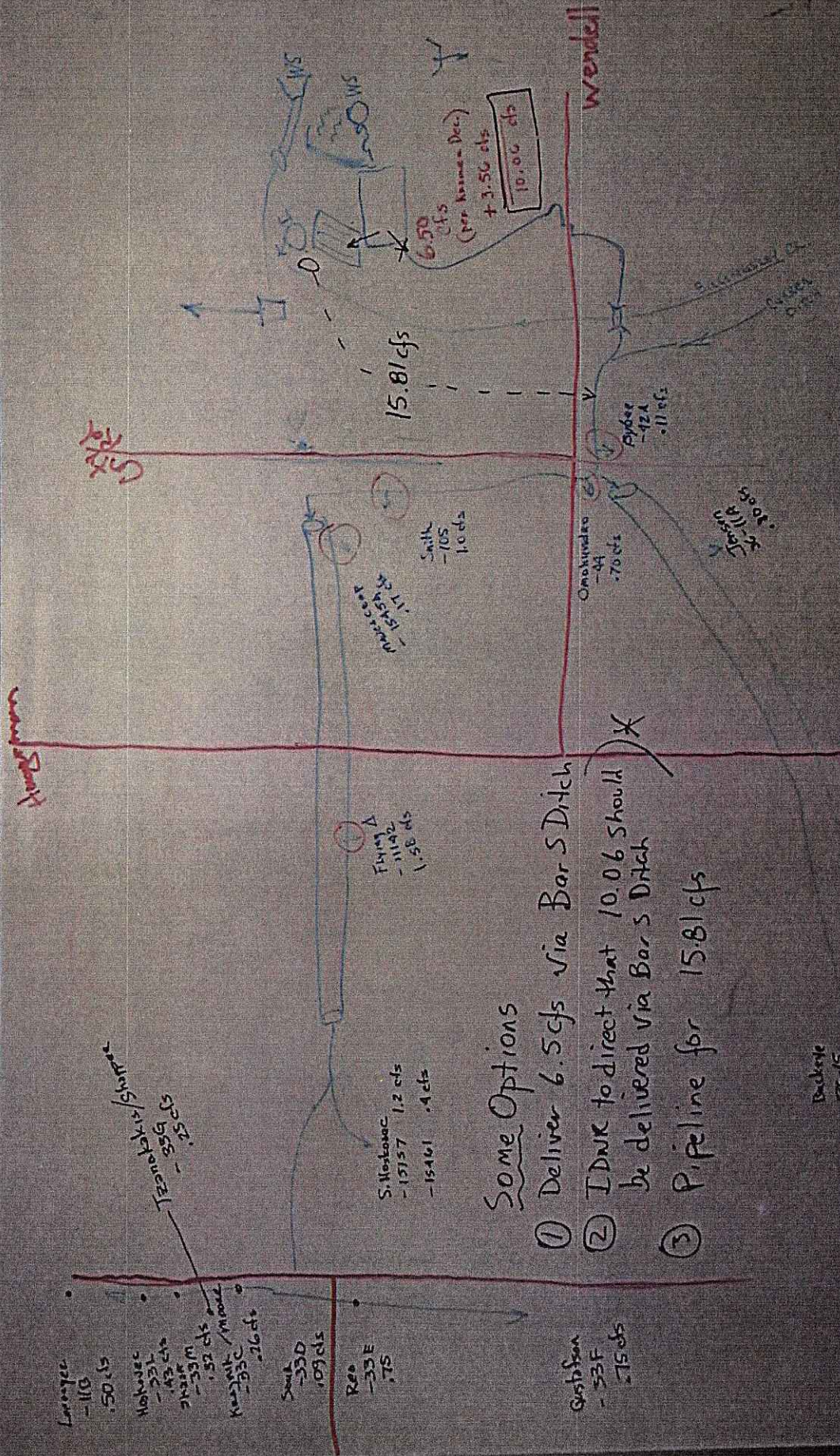
IVAN GUSTAFSON  
BOX 209  
HAGERMAN ID 83332

JOHN W "BILL" JONES  
PO BOX 265  
HAGERMAN ID 83332

PHIL GOSSI  
1106A E 2900 S  
HAGERMAN ID 83332

IDWR STAFF:  
NICK SPENCER  
STEVE CLELLAND  
DOUG JONES  
TIM LUKE  
PHIL RASSIER

Weatherby Springs Rights: Delivered through Bar S and Curran Ditches						
Name	Rt #	Priority	Flow Rate cfs	Flow Rate inches	Party to Kramer?	
Jensen	36-11A	3/8/1902	0.80	40	Yes	
Loranger	36-11B	3/8/1902	0.50	25	Yes	
Buckeye	36-15	3/8/1902	6.50	325	Yes	
Sauer	36-33D	3/8/1902	0.09	4.5	Yes	
Rea	36-33E	3/8/1902	0.75	37.5	Yes	
Gustafson	36-33F	3/8/1902	0.75	37.5	Yes	
B. Hoskovec	36-33L	3/8/1902	0.43	21.5	Yes	
Skaar	36-33M	3/8/1902	0.32	16	Yes	
Bybee	36-42A	4/4/1910	0.11	5.5	No	
Omohundro	36-44	3/8/1902	0.70	35	No	
Smith	36-105	2/1/1888	1.00	50	No	
Flying Triangle	36-11142	3/8/1902	1.58	79	No	
Mavencamp	36-15454	1/10/1917	0.17	8.5	No	
Krajnik	36-16039	3/8/1902	0.18	9	Yes	
Moore	36-16040	3/8/1902	0.08	4	Yes	
Shappee	36-15663	3/8/1902	0.01	0.5	Yes	
Tzanakakis	36-15664	3/8/1902	0.24	12	Yes	
S. Hoskovec	36-15157	3/8/1902	1.20	60	Yes	
S. Hoskovec	36-15461	3/23/1932	0.40	20	Yes	
			15.81cfs	790.5 inches		
			Flow Rate for Non-Kramer Rights =	3.56		
			Flow Rate Limitation in Kramer =	6.5		
			Potential Diversion into Bar S Ditch =	10.06 cfs		
						IDWR
						D.Jones
						5/21/2002

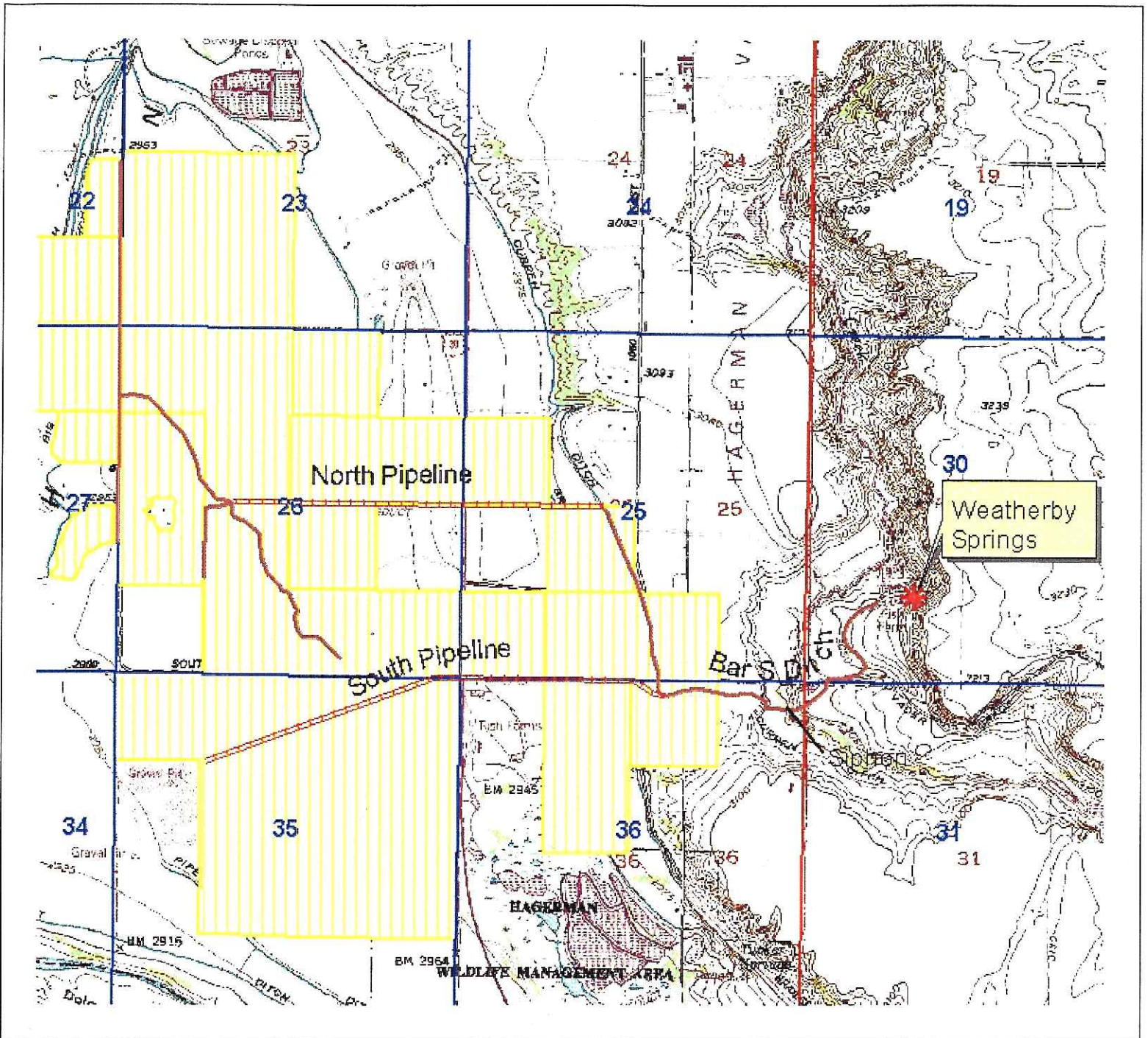


Some Options

- ① Deliver 6.5 cfs via Bar S Ditch
- ② I think to direct that 10.06 should be delivered via Bar S Ditch
- ③ Pipeline for 15.81 cfs

Backlog  
36-15  
6.50  
6.05

# IDAHO DEPARTMENT OF WATER RESOURCES



## Weatherby Springs: Delivered through Bar S Ditch



- Bar S System
- Open Ditches
- Pipelines
- Weatherby Water Rights

D. Jones  
5/21/02