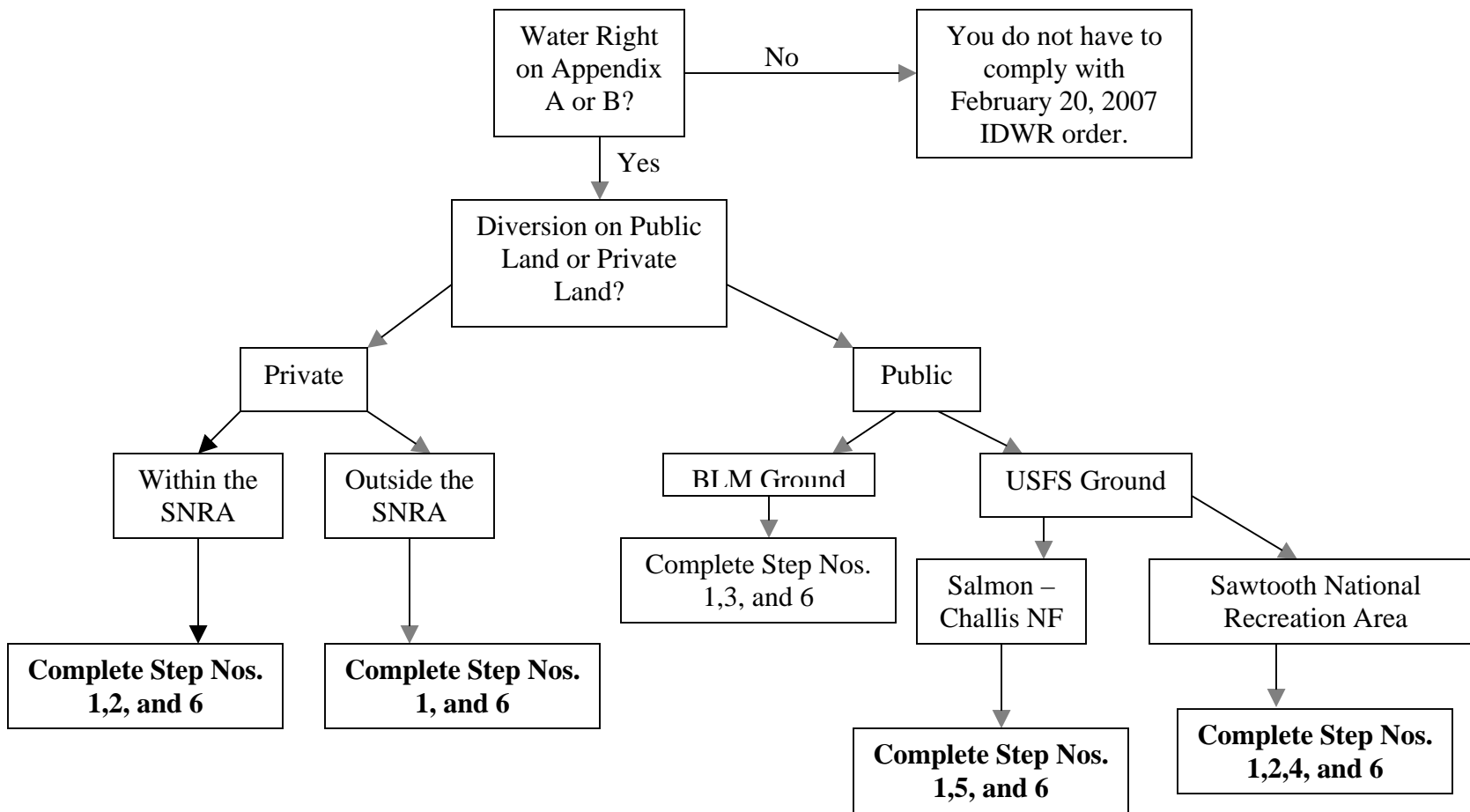


FLOW CHART FOR CONTACTING VARIOUS AGENCIES PRIOR TO COMPLIANCE WITH IDWR ORDER



Steps Referenced Above:

1. Contact IDFG about fish screen issues at (208)-756-6022. This is an optional step. It is recommended, but not necessary.
2. Contact Ruthie Wooding at the SNRA office in Stanley at (208)-774-3011 to find out about special requirements of the SNRA.
3. Contact Tim Vanek at the BLM office in Challis at (208)-879-6200 to ensure the BLM has no additional requirements.
4. Contact Jackie Richter at the Sawtooth NF at (208)-737-3247 to determine if you must apply for a special use permit.
5. Contact Norma Staaf at the Salmon-Challis NF at (208)-756-5128 to determine if you must apply for a special use permit.
6. Submit a plan or request for and extension or exemption to IDWR by June 1, 2007 if diversion is in Basin 71 or June 1, 2008 if in Basin 72.