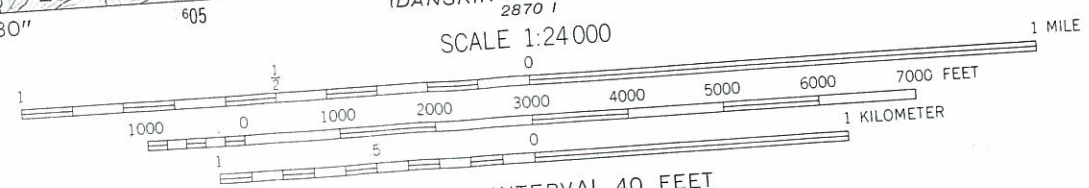
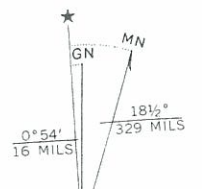


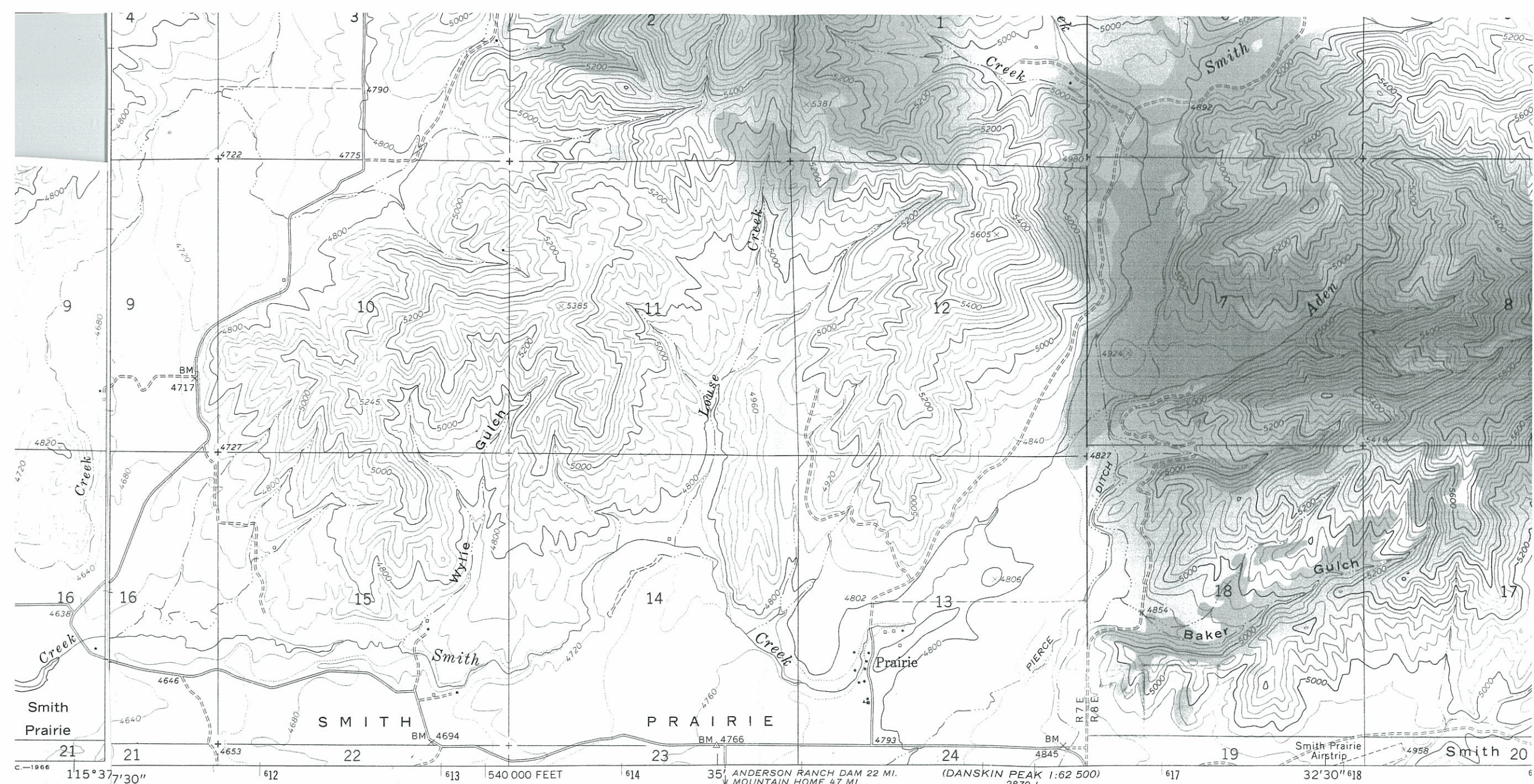
Mapped, edited, and published by the Geological Survey
 Control by USGS and USC&GS
 Topography by photogrammetric methods from aerial
 photographs taken 1959. Field checked 1964
 Polyconic projection. 1927 North American datum
 10 000-foot grid based on Idaho coordinate system,



CONTOUR INTERVAL 40 FEET
 DOTTED LINES REPRESENT 20-FOOT CONTOURS
 DATUM IS MEAN SEA LEVEL

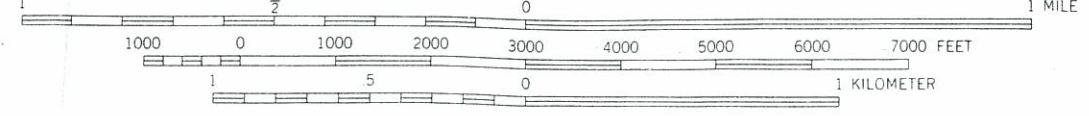


QUADRANGLE LOCATION

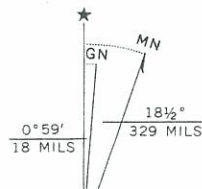


ANDERSON RANCH DAM 22 MI. MOUNTAIN HOME 47 MI. (DANSKIN PEAK 1:62 500) 2870 1

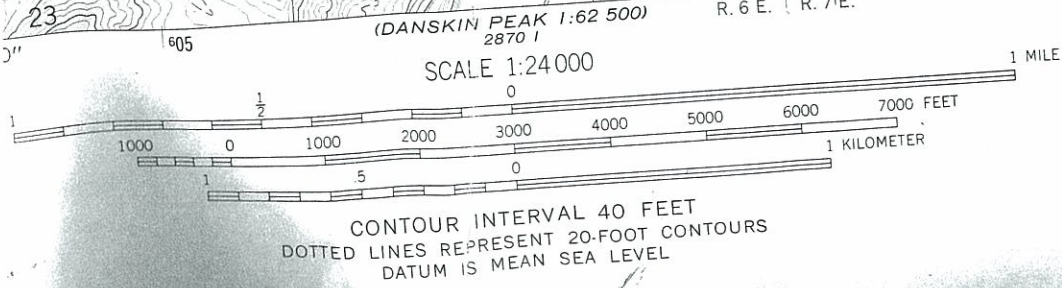
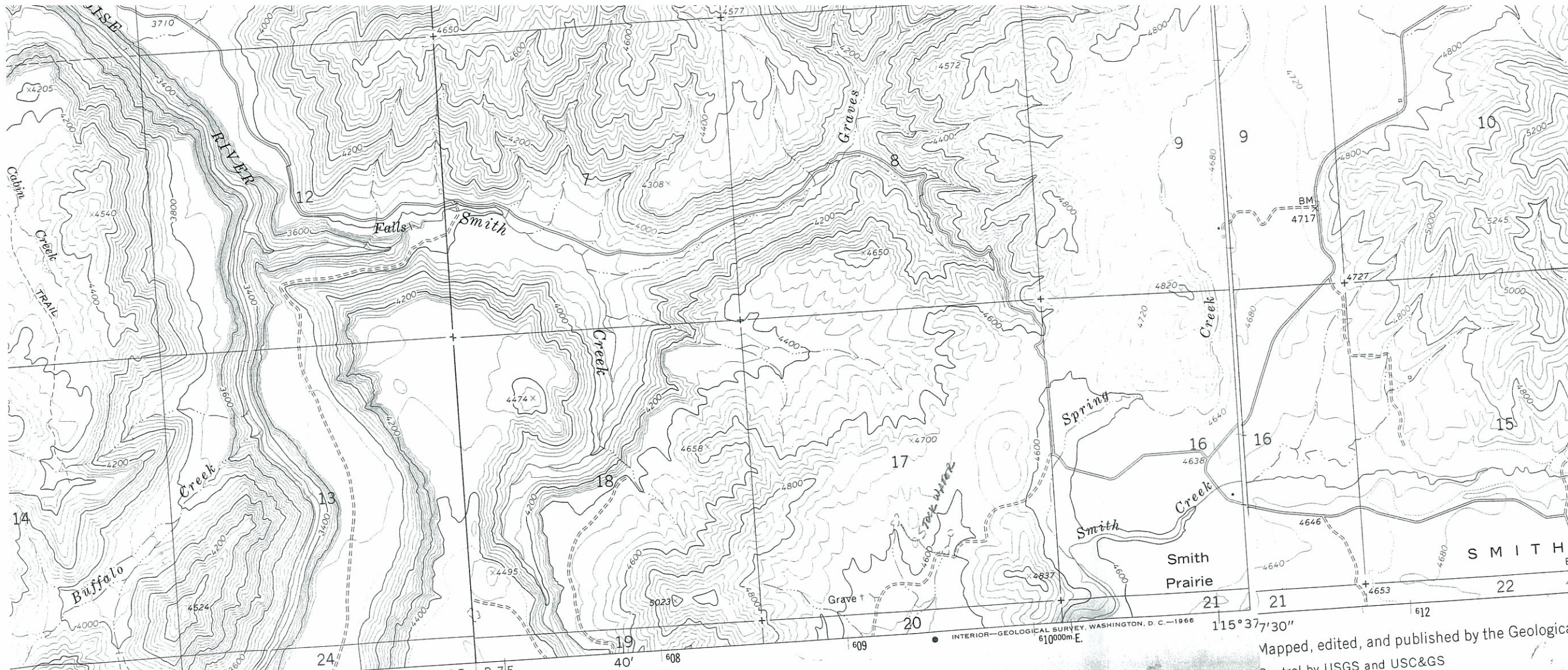
SCALE 1:24 000



CONTOUR INTERVAL 40 FEET
 DOTTED LINES REPRESENT 20-FOOT CONTOURS
 DATUM IS MEAN SEA LEVEL



Mapped, edited, and published by the Geological Survey
 Control by USGS and USC&GS
 Topography by photogrammetric methods from aerial photographs taken 1959. Field checked 1964
 Polyconic projection. 1927 North American datum
 10,000-foot grid based on Idaho coordinate system, west zone



ROAD CLASSIFICATION
 Light-duty _____ Unimproved dirt - - - - -

LONG GULCH, IDAHO
 N4330—W11537.5/7.5
 1964
 AMS 2871 II SW—SERIES V893

Mapped, edited, and published by the Geological Survey, U.S. Geological Survey, Washington, D.C.—1966
 Control by USGS and USC&GS
 Topography by photogrammetric methods from aerial photographs taken 1959. Field checked 1964
 Polyconic projection. 1927 North American datum
 10,000-foot grid based on Idaho coordinate system
 west zone
 1000-meter Universal Transverse Mercator grid tie

X-63

THIS MAP COMPLIES WITH NATIONAL MAP ACCURACY STANDARDS
 FOR SALE BY U.S. GEOLOGICAL SURVEY, DENVER, COLORADO 80225, OR WASHINGTON, D.C. 20242
 A FOLDER DESCRIBING TOPOGRAPHIC MAPS AND SYMBOLS IS AVAILABLE ON REQUEST