

BEAUTIFUL LOWER BIG LOST RIVER & SPRING CREEK '80-85

SPRING CREEK

WETLANDS

BIG LOST RIVER

WETLANDS

SPRING CREEK

THIS PHOTO SHOWS THE ABUNDANCE OF WATER & WETLANDS OF LOWER LOST RIVER VALLEY.

THIS WHOLE AREA HAS BEEN TURNED INTO A WASTELAND EXCEPT FOR THE AREA WHERE THE SUBSIDIZED LANDOWNER FLOWED SPRING CREEK & WETLANDS. THERE HAS BEEN NO WATER FOR 7 OR 8 YEARS!

BIG LOST RIVER RECHARGE COMMITTEE

JANUARY 16, 1996

RE: FORMAL REPORT ON SPRING CREEK AREA

When we first started to work on recharging Spring Creek, everything was very upbeat and we received cooperation from the ditch rider, Mr. Williams. Our main recharge area was feeding the Felton Ranch from the Eastside Canal, which eventually started to fill the lower channel of Spring Creek. It was soon evident that we would never get enough flow from this source to fill Spring Creek. The other false feed was on Sowards lane and it was restricted by a smashed culvert that runs underneath the Eastside canal. It has been ignored by I.D.W.R. and B.L.R.I.D. Another diversion at this point was restricted by a 14 inch culvert that was installed under a private driveway.

The biggest failure for Spring Creek was at the Moore Diversion where the natural stream channel has been destroyed and Spring Creek at this point is fed from a ditch known as the Eastside Canal. From this point downstream Spring Creek is in such deplorable condition, despite all efforts, flows were never adequate to get enough water to connect upper Spring Creek Channel to the Lower Spring Creek Channel.

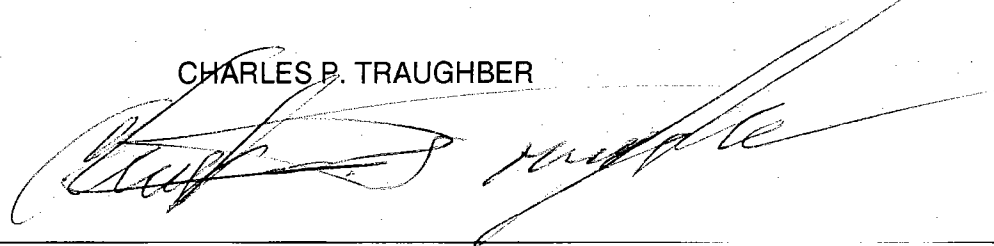
What we didn't realize was that after almost a decade without water, Spring Creek was almost totally destroyed, it was plugged with garbage in some areas, filled with silt and debris from fallen trees. In other places it has even been plowed and planted.

Culverts in some areas have been smashed or are too small to carry enough water to fill the Spring Creek Channel, and as a consequence Spring Creek, although it only runs about 10 to 15 miles was never revived as a viable stream in 1995. Properly taken care of Spring Creek could have very well been the circuit breaker that could have softened or stopped the destruction of the Big Lost River Channel, during the floods of 1995, as well as recharge the Lower Lost River Basin.

I am in favor of a recharge system, but only if it will stand the scrutiny of our present water laws, and only after all Natural Channels and Tributary Channels of Big Lost River, namely the East Fork of Big Lost River called (Spring Creek) have been returned to their natural integrity. It will require a very extensive and well planned program to accomplish this task so as to not have a recharge snafu in the lower valley, such as we had this year. It should also be controlled by the local irrigation district as a single water right for Water District # 34. If two different water rights are approved to recharge the Big Lost River Basin, in my estimation it would add to the chaos that already grips the Big Lost River Basin.

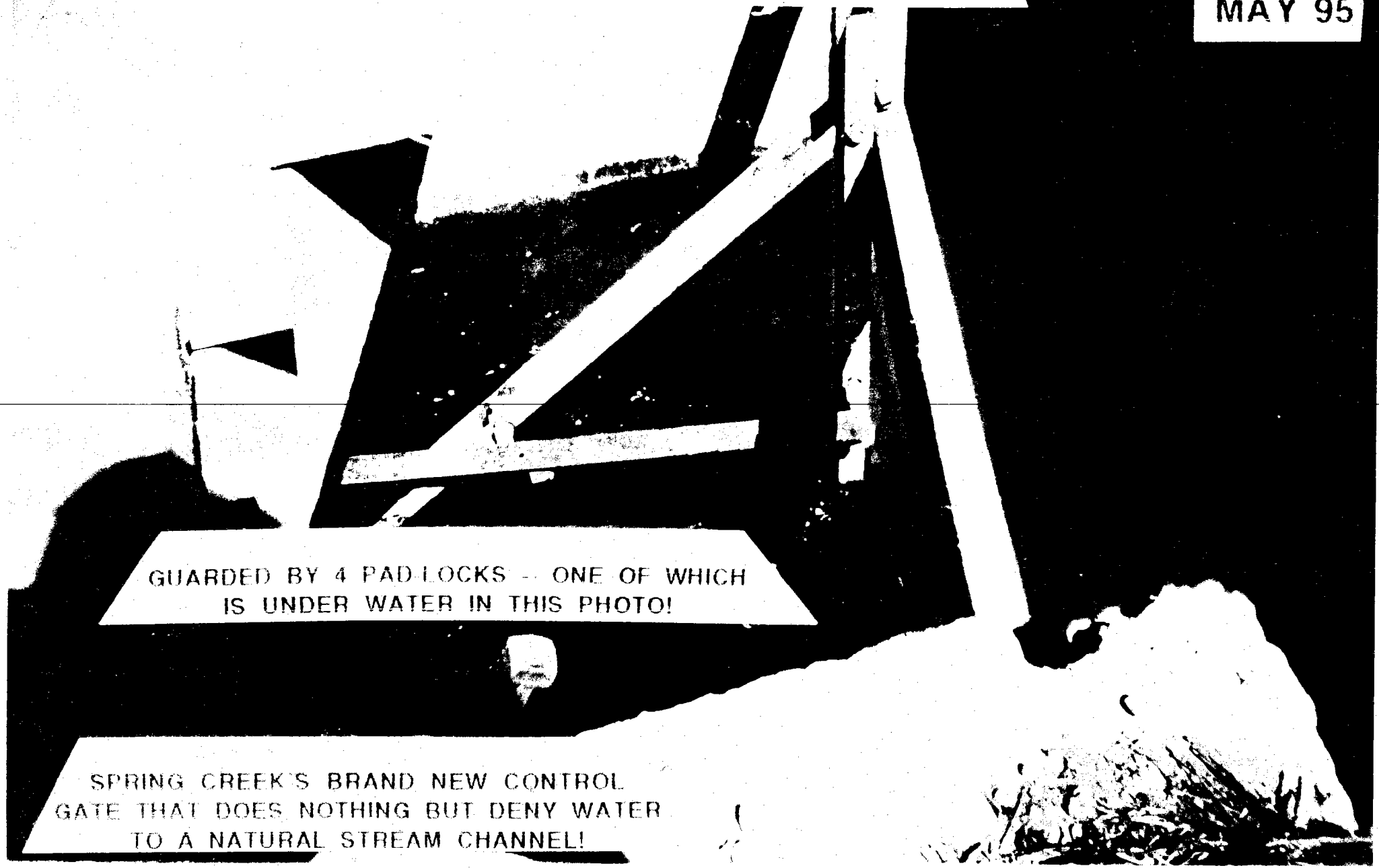
If we fail to restore our Natural Stream Channels in the Big Lost River Basin we will violate almost all of the 12 objectives in these recharge applications.

CHARLES P. TRAUGHBER

A large, stylized handwritten signature in dark ink, appearing to read 'Charles P. Traughber', is written over the printed name.

DISASTER OF SPRING CREEK!

MAY 95



GUARDED BY 4 PAD-LOCKS -- ONE OF WHICH
IS UNDER WATER IN THIS PHOTO!

SPRING CREEK'S BRAND NEW CONTROL
GATE THAT DOES NOTHING BUT DENY WATER
TO A NATURAL STREAM CHANNEL!

MAGNIFICENT BIG LOST RIVER "9-25-95" cpi



BIG LOST RIVER

THE FEEDING OF A NATURAL STREAM CHANNEL FROM A DITCH IS NOTHING
MORE THAN A DEATH WARRANT FOR THE NATURAL CHANNEL AND ITS
ENVIRONMENT!

MOORE DIVERSION

ALL OF THIS WATER -- YET
ON 9-21-95 SPRING CREEK IS
DRY!

THE TRUST OF THOSE WHO WERE PUT INTO FINANCIAL BONDAGE FOR 20 YEARS -- TO PUT A STOP TO THE
PLUNDERING OF BIG LOST RIVER HAS
BEEN BETRAYED BY -- I.D.W.R. -- B.L.R.I.D. -- & -- THE STATE OF IDAHO!

EASTSIDE CANAL THAT DESTROYED SPRING CREEK "9-25-95" cpt



THE TRUST OF THOSE WHO WERE PUT INTO FINANCIAL BONDAGE FOR 20
YEARS -- TO PUT A STOP TO THE PLUNDERING OF BIG LOST RIVER HAS BEEN BETRAYED BY -- I.D.W.R. -- B.L.R.I.D. --
& -- THE STATE OF IDAHO!

SPRING CREEK (EAST FORK OF BIG LOST RIVER)

"1995"

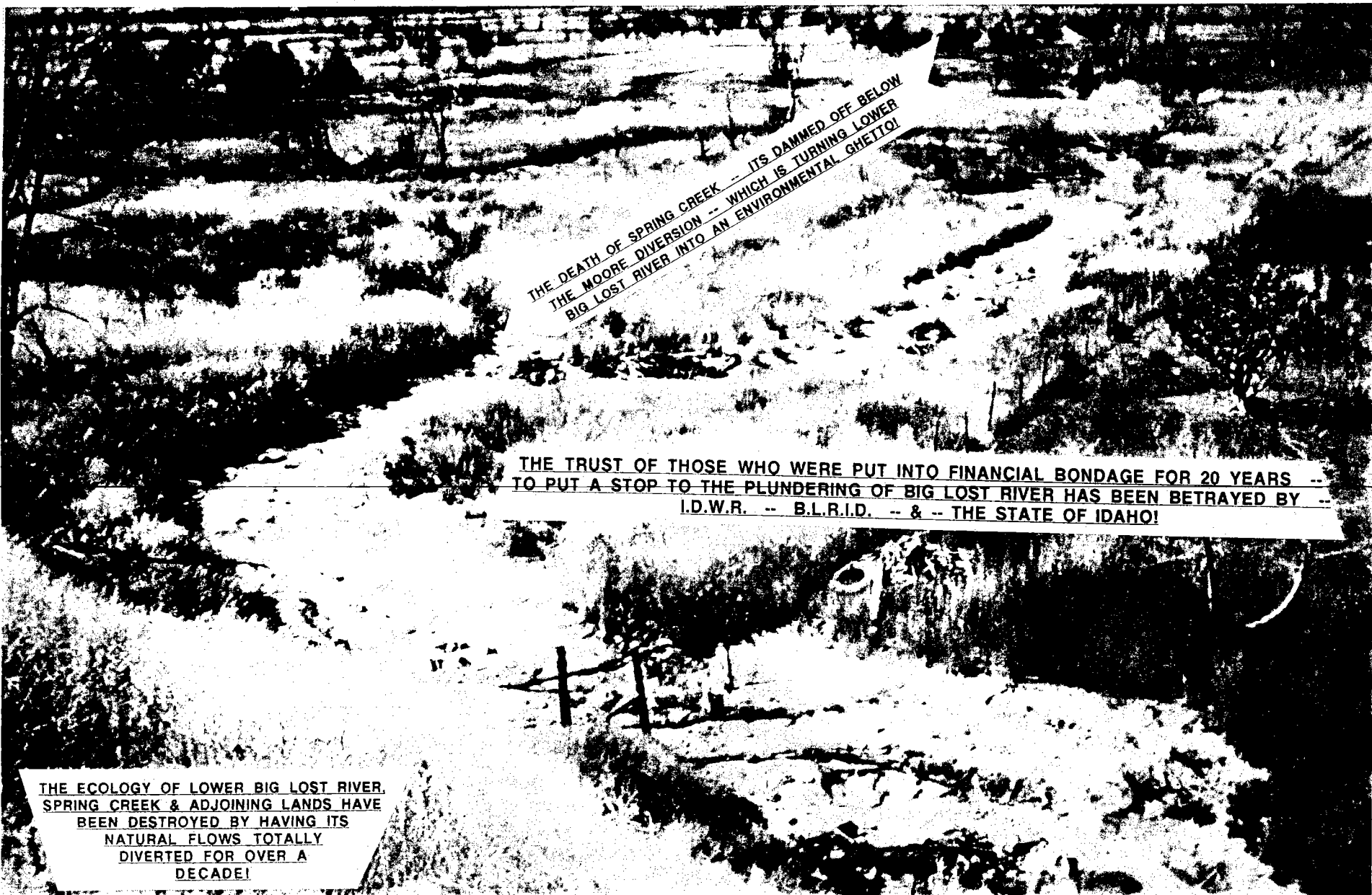
"IGNORED BY STATE OFFICIALS"

<<SPRING CREEK<<

COMPLETELY DIVERTED -- WITH NO NATURAL FLOWS -- THE ARMY ENGINEERS ADMIT OUR PROBLEMS IN SPRING CREEK WERE CAUSED BY HAVING . . . "HAD ITS HYDROLOGY SEVERELY ALTERED BY IRRIGATION DITCH OPERATIONS." ROBERT A. BROCHU ALSO STATED THAT IF AND WHEN THE FLOODS RETURN TO OUR VALLEY, SERIOUS CONSEQUENCES WOULD FACE THE CITIZENS IN THE LOWER LOST RIVER VALLEY!

DUMP SITE -- CONDONED BY (U.S.D.A. - I.D.W.R. - & B.L.R.I.D.)

EAST FORK OF BIG LOST RIVER (SPRING CREEK) "9-21-95" cpt



THE DEATH OF SPRING CREEK -- ITS DAMMED OFF BELOW
THE MOORE DIVERSION -- WHICH IS TURNING LOWER
BIG LOST RIVER INTO AN ENVIRONMENTAL GHETTO!

THE TRUST OF THOSE WHO WERE PUT INTO FINANCIAL BONDAGE FOR 20 YEARS --
TO PUT A STOP TO THE PLUNDERING OF BIG LOST RIVER HAS BEEN BETRAYED BY --
I.D.W.R. -- B.L.R.I.D. -- & -- THE STATE OF IDAHO!

THE ECOLOGY OF LOWER BIG LOST RIVER,
SPRING CREEK & ADJOINING LANDS HAVE
BEEN DESTROYED BY HAVING ITS
NATURAL FLOWS TOTALLY
DIVERTED FOR OVER A
DECADE!

THE FEEDING OF A NATURAL STREAM CHANNEL FROM A DITCH IS NOTHING MORE THAN A DEATH
WARRANT FOR THE NATURAL CHANNEL AND ITS ENVIRONMENT!

EAST FORK OF BIG LOST RIVER
(SPRING CREEK) "9-21-95" cpt


THE TRUST OF THOSE WHO WERE PUT INTO FINANCIAL BONDAGE FOR 20
YEARS -- TO PUT A STOP TO THE PLUNDERING OF BIG LOST RIVER HAS BEEN
BETRAYED BY -- I.D.W.R. -- B.L.R.I.D. -- & -- THE STATE OF IDAHO!

THE DEATH OF SPRING CREEK -- ITS DAMMED OFF BELOW
THE MOORE DIVERSION -- WHICH IS TURNING LOWER
BIG LOST RIVER INTO AN ENVIRONMENTAL GHETTO!

THE ECOLOGY OF LOWER BIG LOST RIVER,
SPRING CREEK & ADJOINING LANDS HAVE
BEEN DESTROYED BY HAVING ITS
NATURAL FLOWS TOTALLY
DIVERTED FOR OVER A
DECADE!

THE FEEDING OF A NATURAL STREAM CHANNEL FROM A DITCH IS NOTHING MORE THAN A DEATH
WARRANT FOR THE NATURAL CHANNEL AND ITS ENVIRONMENT!

EAST FORK OF BIG LOST RIVER
(SPRING CREEK) "9-21-95" cpt

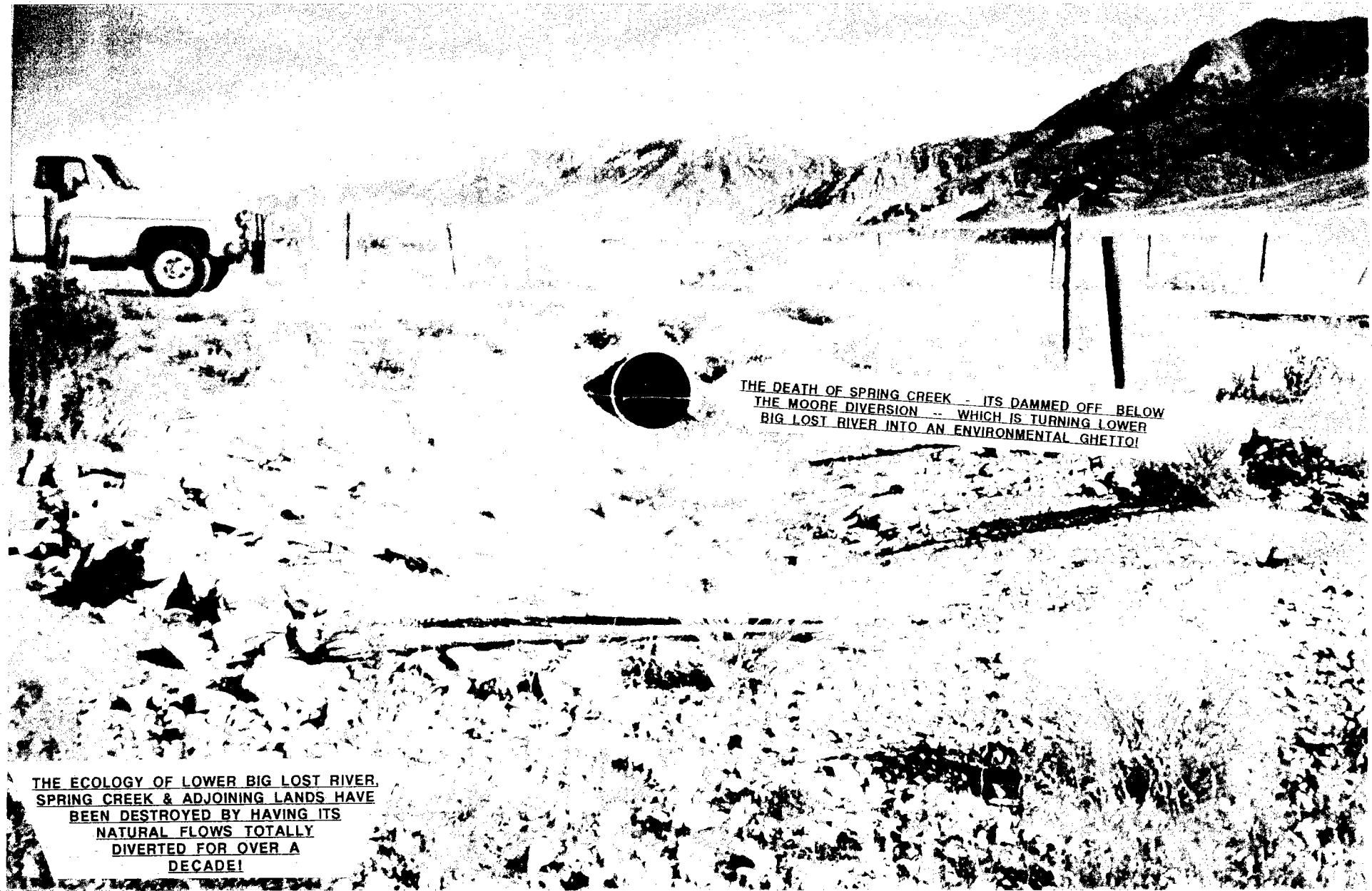


THE DEATH OF SPRING CREEK -- ITS DAMMED OFF BELOW
THE MOORE DIVERSION -- WHICH IS TURNING LOWER
BIG LOST RIVER INTO AN ENVIRONMENTAL GHETTO!

THE ECOLOGY OF LOWER BIG LOST RIVER,
SPRING CREEK & ADJOINING LANDS HAVE
BEEN DESTROYED BY HAVING ITS
NATURAL FLOWS TOTALLY
DIVERTED FOR OVER A
DECADE!

THE FEEDING OF A NATURAL STREAM CHANNEL FROM A DITCH IS NOTHING
MORE THAN A DEATH WARRANT FOR THE NATURAL STREAM CHANNEL AND
ITS ENVIRONMENT!

EAST FORK OF BIG LOST RIVER
(SPRING CREEK) "9-25-95" cpt



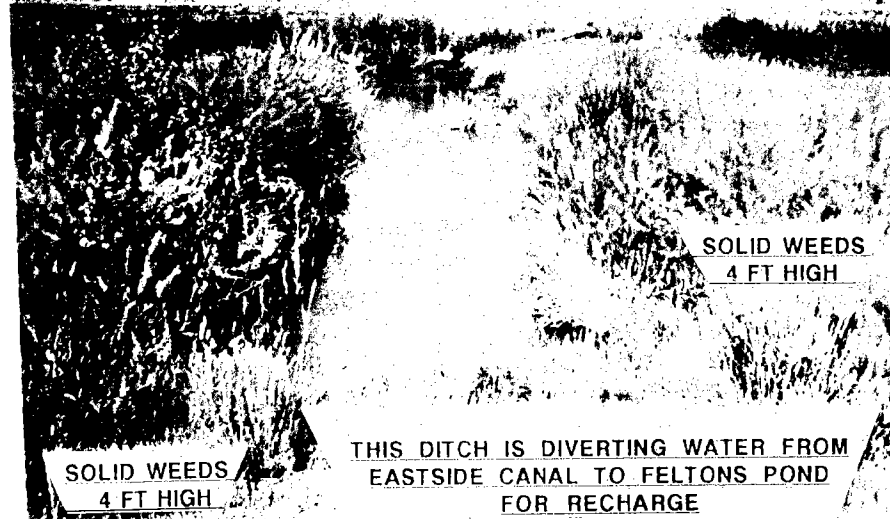
THE DEATH OF SPRING CREEK - ITS DAMMED OFF BELOW
THE MOORE DIVERSION -- WHICH IS TURNING LOWER
BIG LOST RIVER INTO AN ENVIRONMENTAL GHETTO!

THE ECOLOGY OF LOWER BIG LOST RIVER,
SPRING CREEK & ADJOINING LANDS HAVE
BEEN DESTROYED BY HAVING ITS
NATURAL FLOWS TOTALLY
DIVERTED FOR OVER A
DECADE!

THE FEEDING OF A NATURAL STREAM CHANNEL FROM A DITCH IS NOTHING
MORE THAN A DEATH WARRANT FOR THE NATURAL CHANNEL AND ITS
ENVIRONMENT!

THE RECHARGE EFFORT FOR SPRING CREEK WAS FOR ALL EVENTS AND PURPOSES DOOMED BEFORE IT EVER GOT STARTED
 -- THE EAST FORK CHANNEL OF BIG LOST RIVER NAMED (SPRING CREEK) HAS BEEN DESTROYED BY GARBAGE, SMASHED &
 UNDERSIZED CULVERTS, DEBRIS, DESTROYED FLUMES, AND PLOWED & PLANTED CHANNELS.

THIS RECHARGE IS WORKING

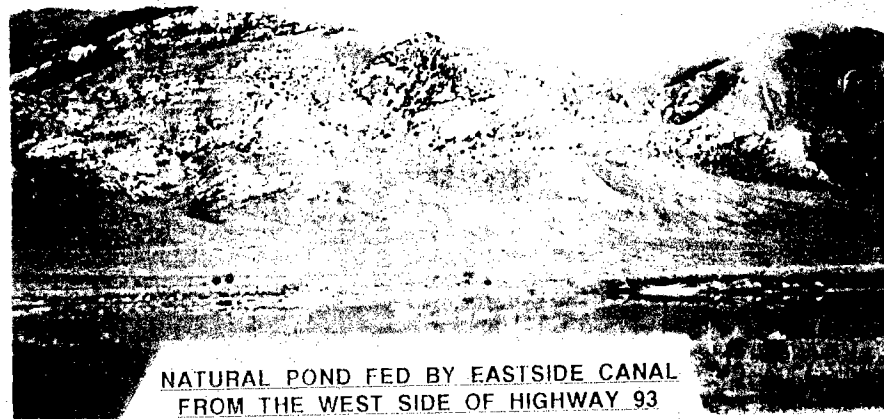


SOLID WEEDS
 4 FT HIGH

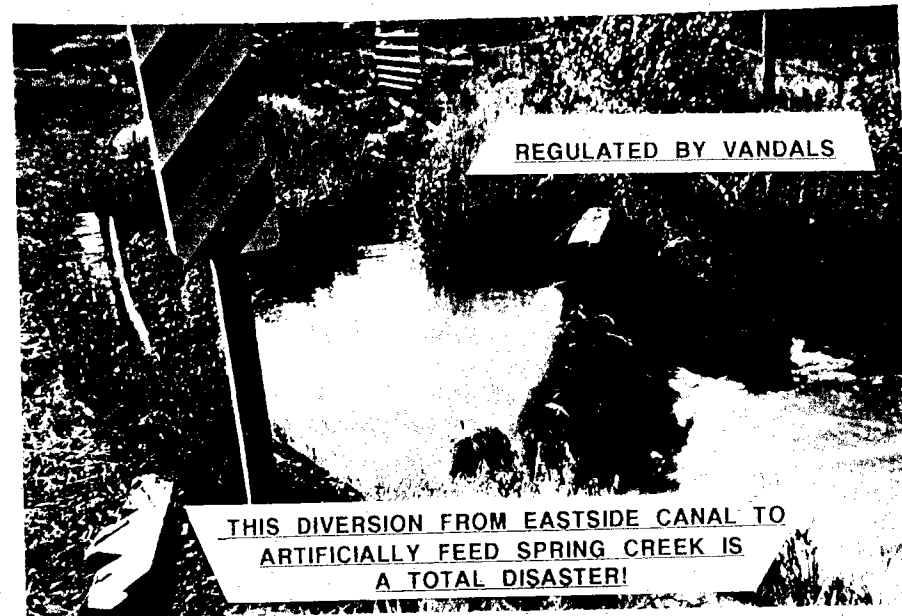
SOLID WEEDS
 4 FT HIGH

THIS DITCH IS DIVERTING WATER FROM
 EASTSIDE CANAL TO FELTONS POND
 FOR RECHARGE

FELTON RANCH THAT HAS BEEN VIRTUALLY
 DESTROYED FROM FAILED IRRIGATION PRACTICES



NATURAL POND FED BY EASTSIDE CANAL
 FROM THE WEST SIDE OF HIGHWAY 93



REGULATED BY VANDALS

THIS DIVERSION FROM EASTSIDE CANAL TO
 ARTIFICIALLY FEED SPRING CREEK IS
 A TOTAL DISASTER!

THIS CHANNEL OF SPRING CREEK RECEIVED
 A DRIBBLE OF WATER ON THE 22ND OF JULY
 IT WAS BONE DRY ON THE 28TH OF JULY 95



SOLID WEEDS
 4 FT HIGH

RECHARGE EFFORT HERE IS OBSCENE!
 SPRING CREEK REMAINS BROKEN IN 2 PLACES!

**SPRING CREEK AND ADJOINING LANDS HAVE BEEN DESTROYED
 OR SACRIFICED FOR WHAT I.D.W.R. AND THE STATE OF IDAHO
 CALLS FULL ECONOMICAL DEVELOPMENT.**

MONUMENTS TO THE DEATH OF SPRING CREEK!

AUG. 95
RB

THIS CONTROL VALVE THAT IS SUPPOSED
TO FEED SPRING CREEK IS ANOTHER
MONUMENT TO THE DEATH OF A RIVER!

<<SPRING CREEK FEED<<

<<EASTSIDE CANAL <<

AUG. 95
RB

<<SPRING CREEK FEED<<

<<EASTSIDE CANAL <<

THIS CONTROL VALVE THAT IS SUPPOSED
TO FEED SPRING CREEK IS ANOTHER
MONUMENT TO THE DEATH OF A RIVER!

AUG. 95
RB

<<EASTSIDE CANAL <<

THE VILLAINS THAT KEPT REMOVING
THESE BOARDS ARE TO BE COMMENDED
THEY SUCCEEDED IN THEIR ENDEAVOR
TO AGAIN KILL SPRING CREEK!

AUG. 95
RB

B.L.R.I.D. MUST BE VERY PROUD
OF THEIR DISASTROUS
POLICIES!

STEAL THE WATER & EVERYTHING DIES!

<<SPRING CREEK<<

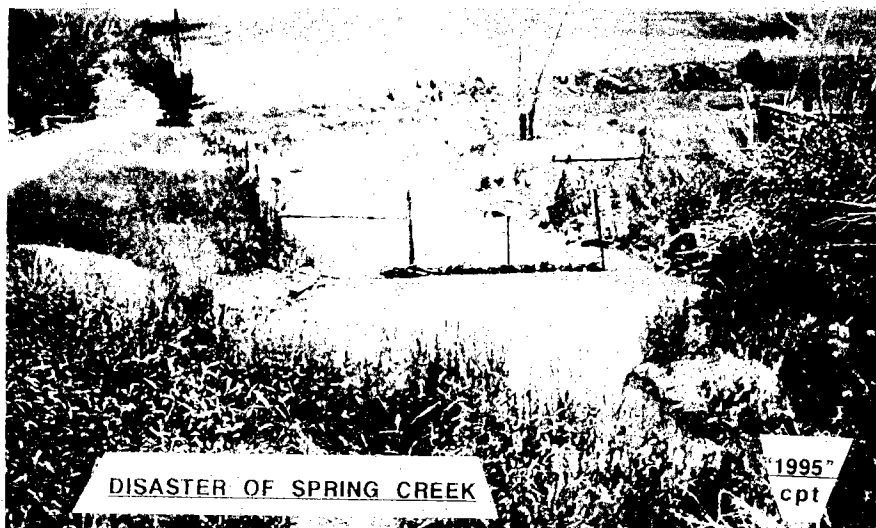
MAN MADE DROUGHT IS BACK! AUG. 21, "1995" cpt

TRAGEDY OF LOWER BIG LOST RIVER VALLEY



THIS DISASTER THAT IS ARTIFICIALLY FEEDING
SPRING CREEK REQUIRES CHECKING DAILY
THIS RAISED BOARD CUT THE FLOWS TO
SPRING CREEK IN HALF.

SPRING CREEK BEING FED BY A DITCH NAMED
EASTSIDE CANAL



DISASTER OF SPRING CREEK



THESE PICTURES OF THIS DIVERSION OR CONTROL
GATES SHOW THE BLATANT DISRESPECT FOR A
NATURAL STREAM CHANNEL.

WHO DONE IT THIS TIME?



WHOMEVER REMOVED THE BOARD THIS TIME
BROKE IT & AGAIN SHUT OFF FLOWS TO
SPRING CREEK FOR SEVERAL DAYS

THE FEEDING OF A NATURAL STREAM CHANNEL FROM A DITCH IS
NOTHING MORE THAN A DEATH WARRANT FOR THE STREAM & ITS
ENVIRONMENT!

THE PEOPLE THAT WOULD DESTROY WHAT GOD BUILT, ONLY FOR THE REMNANT OF THE
ARE THE SAME ONES THAT CALL US THAT ARE CONCERNED ABOUT OUR ENVIRONMENT.
ENVIRONMENTALISTS THAT ARE OUT TO DESTROY THEM -- NUTS!

LOWER BIG LOST RIVER SUCKED DRY!

MAY 95



THESE GATES SHUT OFF ALL NATURAL FLOWS TO
LOWER BIG LOST RIVER!

IN 1994 GOV. ANDRUS & R. KEITH HIGGINSON DECLARED
BUTTE COUNTY A DISASTER AREA BECAUSE OF THE
DROUGHT -- WHICH GAVE THE GREEN LIGHT TO
THE UNSCRUPULOUS TO USE ALL OF OUR
SURFACE WATER AS WELL AS TO SUCK
OUR AQUIFER DRY!

THE PEOPLE THAT WOULD DESTROY WHAT GOD BUILT, ONLY FOR THE ALMIGHTY DOLLAR ARE THE SAME PEOPLE THAT ARE CONCERNED ABOUT OUR ENVIRONMENT. ENVIRONMENTALISTS THAT ARE OUT TO DESTROY THEM -- NUTS!

LEW ROTHWELL RANCH -- TOTALLY DESTROYED!

"1994"

THIS IS THE ONLY PLACE IN IDAHO THAT YOU CAN FIND THIS KIND OF DEVASTATION AND
I.D.W.R. SAYS IT'S CAUSED BY THE DROUGHT. NUTS!

WASTELAND-CREATED BY I.D.W.R.
STEAL THE WATER & EVERYTHING DIES!

<<SPRING CREEK

<<BIG LOST RIVER

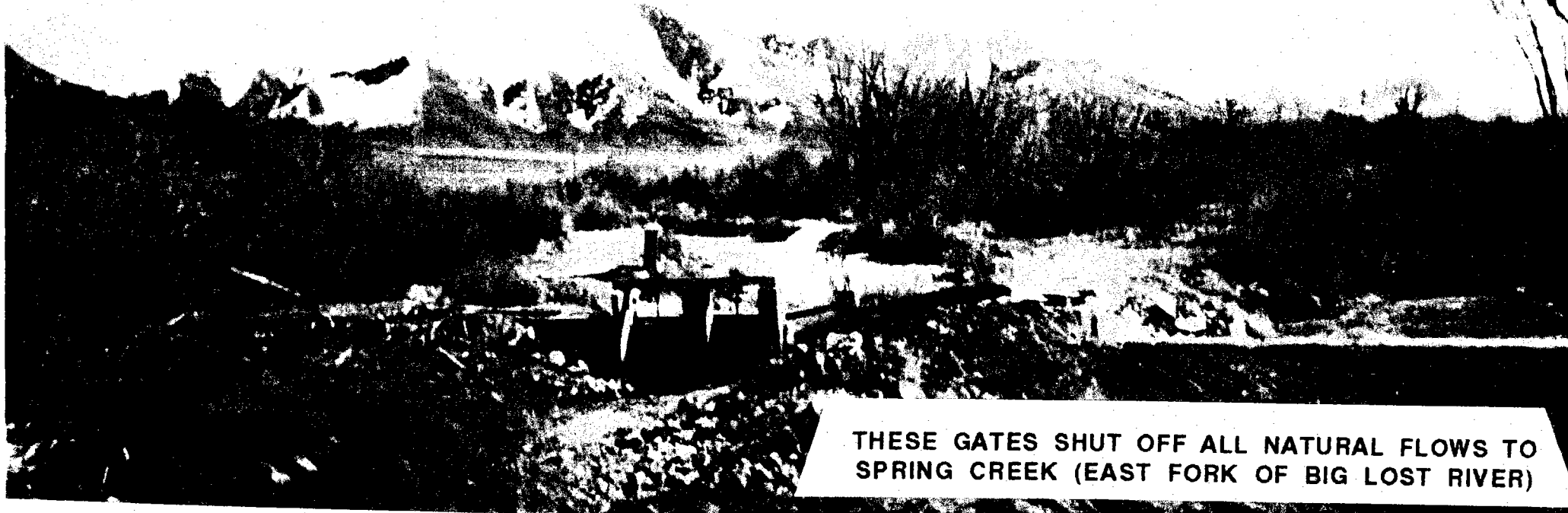
THIS IS THE LOWEST POINT IN THE LOWER BIG LOST RIVER VALLEY -- LOST RIVER
AND SPRING CREEK RUN SIDE BY SIDE HERE AND THIS DISASTER WAS
CAUSED BY TRANSPORTING NATURAL WATER FLOWS -- TO FOREIGN LANDS
OUTSIDE OF THIS DRAINAGE SYSTEM!

~~THE PEOPLE THAT WOULD DESTROY WHAT GOD BUILT, ONLY FOR THE ALMIGHTY DOLLAR ARE THE SAME ONES THAT CALL US
THAT ARE CONCERNED ABOUT OUR ENVIRONMENT, ENVIRONMENTALISTS THAT ARE OUT TO DESTROY THEM -- NUTS!~~

LOWER BIG LOST RIVER SUCKED DRY!

MAY 95

IN 1994 GOV. ANDRUS & R. KEITH HIGGINSON DECLARED
BUTTE COUNTY A DISASTER AREA BECAUSE OF THE
DROUGHT -- WHICH GAVE THE GREEN LIGHT TO
THE UNSCRUPULOUS TO USE ALL OF OUR
SURFACE WATER AS WELL AS TO SUCK
OUR AQUIFER DRY!



THESE GATES SHUT OFF ALL NATURAL FLOWS TO
SPRING CREEK (EAST FORK OF BIG LOST RIVER)

MOORE DIVERSION GATES TO EASTSIDE CANAL
& MAN MADE SPRING CREEK INLET AFTER
HAVING DESTROYED THE NATURAL
CHANNEL OF SPRING CREEK!

THE PEOPLE THAT WOULD DESTROY WHAT GOD BUILT, ONLY FOR THE ALMIGHTY DOLLAR ARE THE SAME ONES THAT CALL US
THAT ARE CONCERNED ABOUT OUR ENVIRONMENT, ENVIRONMENTALISTS THAT ARE OUT TO DESTROY THEM -- NUTS!

BEAUTIFUL POTATO FIELDS AS FAR AS THE EYE
CAN SEE -- THIS IS WHAT I.D.W.R., U.S.D.A. AND
B.L.R.I.D. TRADED OUR VALLEY FOR!

THE FRIENDS OF BIG LOST RIVER WANT OUR CONSTITUTIONAL LAWS ENFORCED. WE ARE LOOKING FOR JUSTICE, COMMON SENSE AND INTEGRITY!

THIS IS 1994 AND THERE IS NO DROUGHT HERE!

IS THIS WHAT I.D.W.R. CALLS FULL ECONOMIC
DEVELOPMENT?

THESE LANDS ARE PART OF THE OLD CAREY ACT PROJECT, WHICH PUT DESERT LANDS INTO PRODUCTION. WHEN IT BECAME APPARENT THAT OUR DRAINAGE SYSTEM COULD NOT SUPPLY ENOUGH WATER TO THESE LANDS OUTSIDE OF THE NATURAL DRAINAGE SYSTEM, THE RESIDENTS HAD TO USE DYNAMITE TO GET THE ATTENTION OF THE BUREAUCRATS, TO PUT A STOP TO THE DEMISE OF LOWER BIG LOST RIVER IN THE 1930'S. IS IT ANY WONDER FOLKS ARE UPSET, THEY BONDED THEMSELVES FOR 20 YEARS TO STOP THE TRANSFER OF THEIR WATER TO THESE DESERT LANDS. I.D.W.R. AND U.S.D.A. IS RESPONSIBLE FOR THE DEMISE OF LOWER BIG LOST RIVER VALLEY!

THIS ARTIFICIAL RECHARGE SYSTEM IS THE RESULT OF ONE MAN'S ABILITY TO PUT HIS FULL RESOURCES AVAILABLE TO A CAUSE THAT CAN HELP EVERYONE AND THE ENVIRONMENT IN THE BIG LOST RIVER VALLEY. MR. NELSON SHOULD BE COMMENDED.

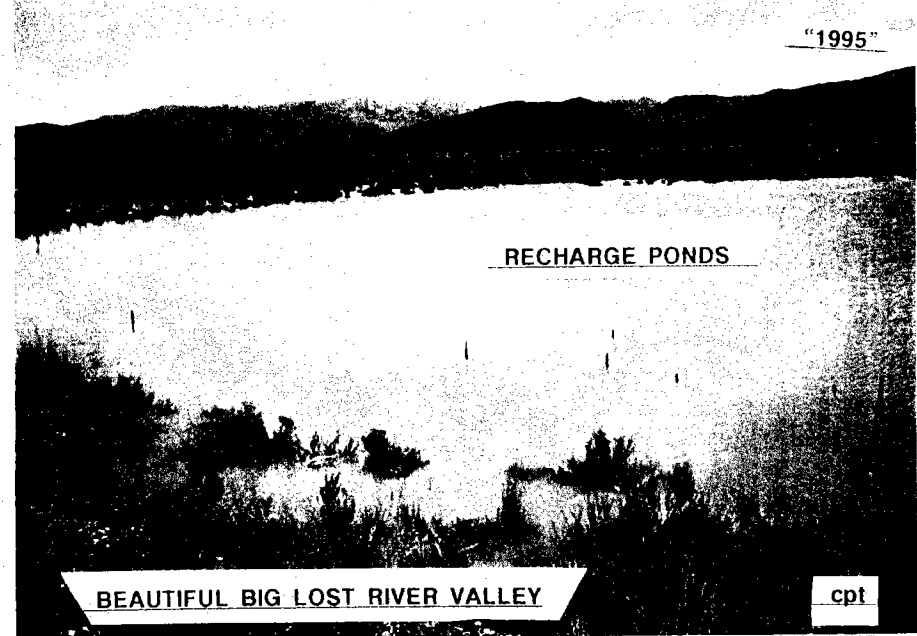
CONTROL GATE BUILT AND INSTALLED BY DAVE NELSON



"1995"

cpt

CANAL FOR FLOWS APPROXIMATELY 1 MILE LONG
CONSTRUCTED BY DAVE NELSON

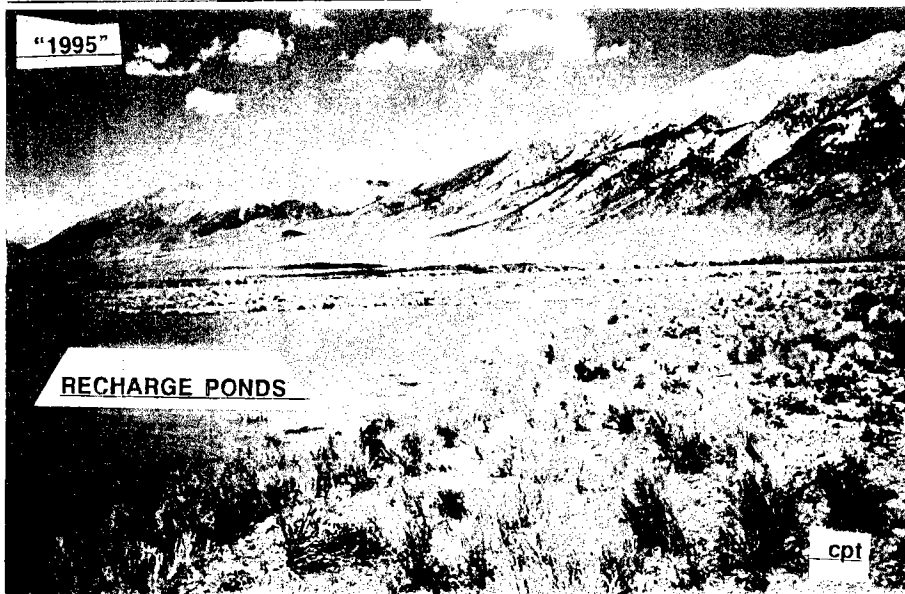


"1995"

RECHARGE PONDS

BEAUTIFUL BIG LOST RIVER VALLEY

cpt

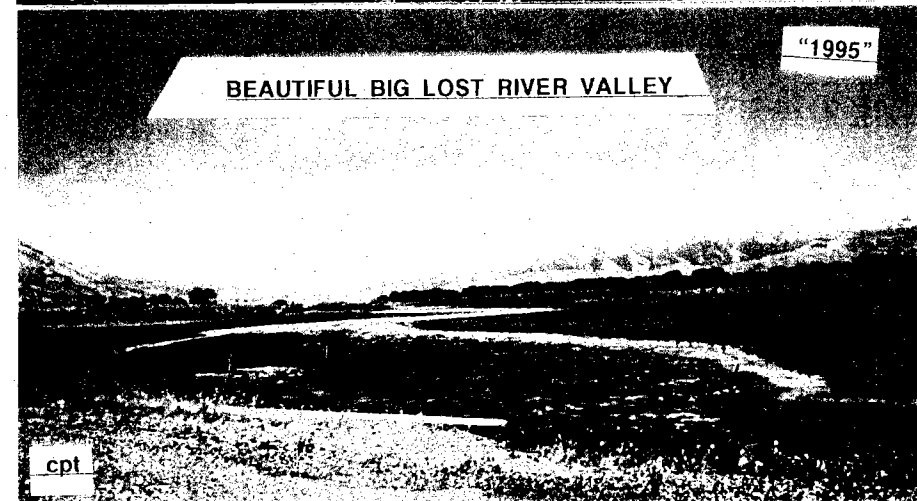


"1995"

RECHARGE PONDS

cpt

BEAUTIFUL BIG LOST RIVER VALLEY



"1995"

BEAUTIFUL BIG LOST RIVER VALLEY

cpt

THIS PICTURE, THAT IS A FEW MILES BELOW THIS
RECHARGE SYSTEM SHOWS WHAT COULD BE
THE BENEFITS BY HELPING NATURE
RESTORE ITSELF.

cpt
"1995"

THE STATE OF IDAHO SHOULD ENCOURAGE & RESTORE OUR
DAMAGED WATERSHEDS & THIS IS A GOOD START.