

49-D 2004



State of Idaho

DEPARTMENT OF WATER RESOURCES

1301 North Orchard Street, P.O. Box 83720, Boise, Idaho 83720-0098
Phone: (208) 327-7900 FAX: (208) 327-7866

DIRK KEMPTHORNE
GOVERNOR

KARL J. DREHER
DIRECTOR

April 1, 2004

Rick Neff
Water District 43-B
P.O. Box 55
Mackay, ID 83342

RE: Requested information

Dear Mr. Neff:

Please find attached the information you requested this morning during our telephone conversation. A map showing the locations of legal points of diversion for surface water rights owned by Reid Stewart is attached. Mr. Stewart's water rights authorize two separate points of diversion from the Raft River. The attached table summarizes Mr. Stewart's surface water rights. Groundwater rights have been excluded from the list.

Feel free to contact me or the Eastern Region office if you need additional assistance.

Respectfully,

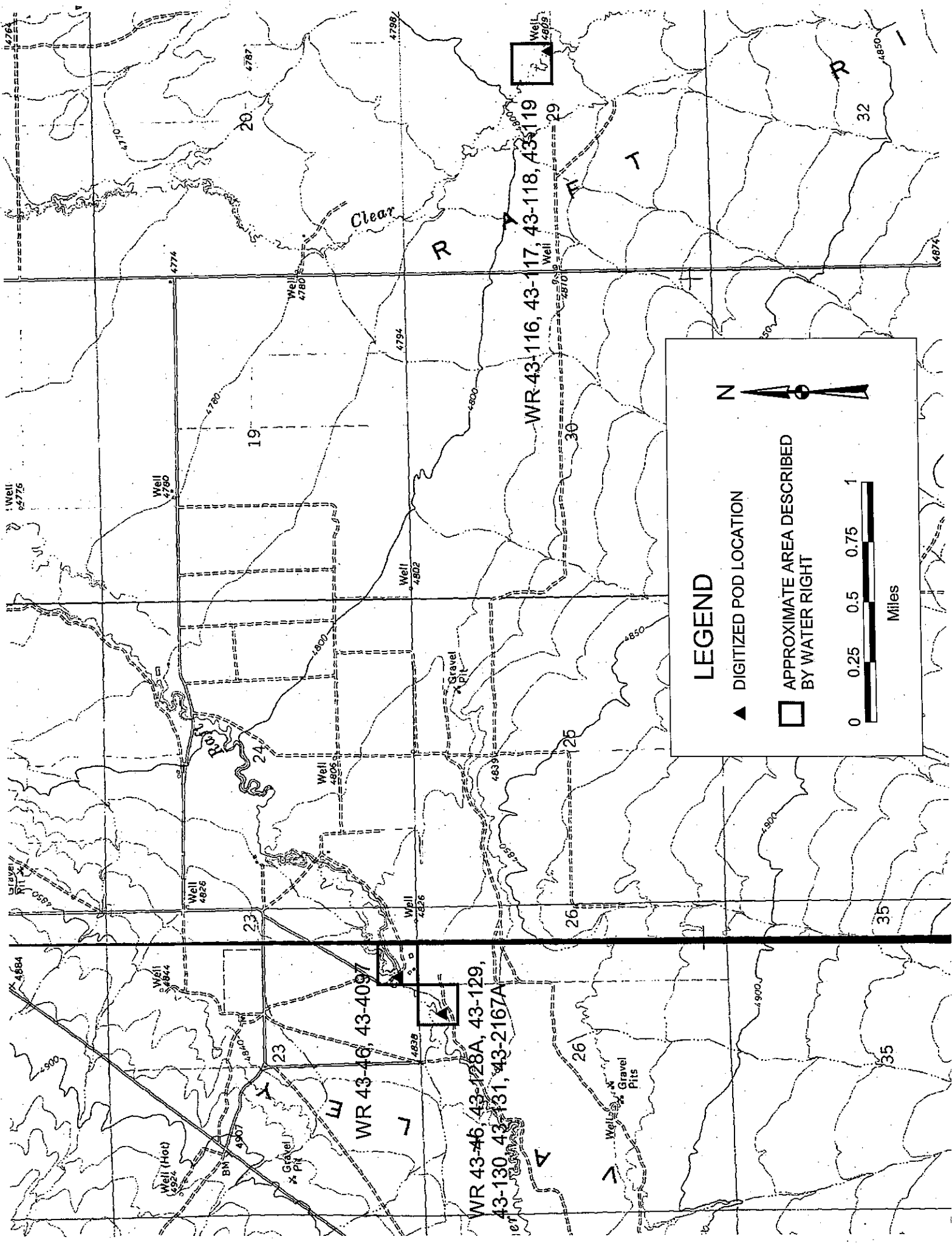
Jennifer Berkey
Water Distribution Section

Enclosures

N:/Corrspondence/04-01WD43B.doc

Surface water rights in Basin 43 owned by Reid S. and Ruth O. Stewart.
 This information was extracted from the IDWR database on April 1, 2004 and includes water rights that have been decreed or recommended in the Snake River Basin Adjudication. Ground water rights were excluded from this list.

Water Right No.	Source	Priority Date	Point of Diversion			Rate(cfs)	Volume(af)	Acres	Acro Limit	Water Use(s)	Owner(s)
			Twp	Range	Sec						
43	RAFT RIVER	1884/04/30	15S	26E	23	SWSESE	2.00	1023.3	100	IRRIGATION	STEWART, REID S (Current); STEWART, RUTH O (Current)
43	RAFT RIVER	10/11/1930	15S	26E	23	SWSESE	4.00			STOCKWATER	STEWART, REID S (Current); STEWART, RUTH O (Current)
43	RAFT RIVER	1884/04/30	15S	26E	26	NENWNE	2.00	1023.3	100	IRRIGATION	STEWART, REID S (Current); STEWART, RUTH O (Current)
43	RAFT RIVER	1884/04/30	15S	26E	26	NENWNE	4.67	1023.3	233	IRRIGATION	STEWART, RUTH O (Current); STEWART, REID S (Current);
43	RAFT RIVER	12/5/1913	15S	26E	26	NENWNE	0.66	1023.3	176	IRRIGATION	STEWART, RUTH O (Current); STEWART, REID S (Current);
43	RAFT RIVER	5/25/1914	15S	26E	26	NENWNE	0.80	1023.3	40	IRRIGATION	STEWART, RUTH O (Current); STEWART, REID S (Current);
43	RAFT RIVER	3/8/1915	15S	26E	26	NENWNE	0.46	1023.3	176	IRRIGATION	STEWART, RUTH O (Current); STEWART, REID S (Current);
43	RAFT RIVER	9/27/1915	15S	26E	26	NENWNE	2.40	1023.3	176	IRRIGATION	STEWART, RUTH O (Current); STEWART, REID S (Current);
43	CLEAR CREEK	1882/01/02	15S	27E	29	SESWNE	2.00	155		IRRIGATION	STEWART, REID S (Current); STEWART, RUTH O (Current)
43	CLEAR CREEK	1884/01/31	15S	27E	29	SESWNE	2.00	160		IRRIGATION	STEWART, REID S (Current); STEWART, RUTH O (Current)
43	CLEAR CREEK	1897/06/11	15S	27E	29	SESWNE	2.80	153		IRRIGATION	STEWART, RUTH O (Current); STEWART, REID S (Current);
43	CLEAR CREEK	4/10/1914	15S	27E	29	SESWNE	1.48	74		IRRIGATION	STEWART, RUTH O (Current); STEWART, REID S (Current);



LEGEND



▲ DIGITIZED POD LOCATION

□ APPROXIMATE AREA DESCRIBED BY WATER RIGHT



Miles