

WD 43-B, 1997

RECEIVED

JUN 23 1998

Department of Water Resources

# 1997 ANNUAL REPORT CLEAR CREEK WATER DISTRIBUTION SYSTEM

---

Prepared for

STATE OF UTAH  
OFFICE OF THE STATE ENGINEER  
DIVISION OF WATER RIGHTS

BY

Vern Kempton  
Water Commissioner  
1997

# CLEAR CREEK DISTRIBUTION SYSTEM - DELIVERY SCHEDULE

Natural Flow (cfs)	0
Is Idaho filled ? (Yes=1, No=0)	0

## WATER TO DISTRIBUTE TO UTAH WATER USERS

Water Users	Flow (cfs)	Used year to date
		AF
Clear Valley Ranch	0.00	287.01
Naf Irrigation Co	0.00	1017.34
Dave Sundberg	0.00	345.25
Mont Campbell	0.00	1265.47
Hyrum Campbell	0.00	306.65
Larry Kempton	0.00	464.54
Duane Campbell	0.00	0.00
<b>Total</b>	<b>0.00</b>	<b>3686.26</b>

TOTAL WATER DELIVERED TO UTAH TO DATE (AF): 3686.26  
 TOTAL WATER DELIVERED TO IDAHO TO DATE (AF): 4894.68

## WATER RIGHT BY PRIORITY

Water Users	1878	1883-1884	1885	1893	1900	1901	1902
Clear Valley Ranch	0.5						
Naf Irrigation Co	0.33						
Naf Irrigation Co		1.66					
Naf Irrigation Co		0.67					
Naf Irrigation Co			2.6600				
Dave Sundberg			0.0600				
Mont Campbell			0.0400				
Naf Irrigation Co				2.6600			
Hyrum Campbell				0.5840			
Naf Irrigation Co					3.6800		
Dave Sundberg						1.7400	
Mont Campbell						1.1600	
Larry Kempton							0.3830
Duane Campbell							0.0667
<b>Total All rights (cfs)</b>							
<b>Before Idaho is filled:</b>							
Primary Rights	0.83	2.33	2.76	3.244	3.68	2.9	0.4497
Percentage filled	0.00	0.00	0.00	0.00	0.00	0.00	0.00
Balance remaining	0.00	0.00	0.00	0.00	0.00	0.00	0.00
<b>After Idaho is filled:</b>							
Primary Rights	0	0	0	0	0	0	0
Percentage filled	0.00	0.00	0.00	0.00	0.00	0.00	0.00
Balance remaining	0.00	0.00	0.00	0.00	0.00	0.00	0.00

Excess Water Above Primary rights = 0.00

### FILLING IDAHO'S 560 AF RIGHT:

Idaho Water (cfs) =	0.00
Idaho Water (Acre-ft) =	0.00
Days to fill Idaho Water =	0.00

Idaho's 57% Split =	0.00
Utah's 43% Split =	0.00

## TOTAL WATER TO DISTRIBUTE INCLUDING EXCESS WATER

Water Users	Primary Rights	% of total	Excess Water to Distr.	Excess+Primary
Clear Valley Ranch	0.5	0.0309	0.000	0.00
Naf Irrigation Co	11.66	0.7200	0.000	0.00
Dave Sundberg	1.8	0.1112	0.000	0.00
Mont Campbell	1.2	0.0741	0.000	0.00
Hyrum Campbell	0.584	0.0361	0.000	0.00
Larry Kempton	0.383	0.0237	0.000	0.00
Duane Campbell	0.0667	0.0041	0.000	0.00
<b>Total (cfs)</b>	<b>16.1937</b>	<b>1</b>	<b>0.00</b>	<b>0.00</b>

**CLEAR CREEK DISTRIBUTION SYSTEM WATER DELIVERY  
NATURAL FLOW OF CLEAR CREEK (cfs)**

DATE	MARCH	APRIL	MAY	JUNE	JULY	AUG	SEPT	OCT
1			9	130.3	19	7.2		
2			9	113.98	19	6		
3			9	108.48	18.1			
4			9	106.3	17			
5			9	115	15.3			
6			13	105.3	14.05			
7			14	96.2	14.05			
8			16.97	94.4	14.2			
9			16.97	84.9	15			
10			26.15	77.3	15			
11			14	73.5	15			
12			29.5	70.1	15			
13			43	69.8	12.5			
14			52.34	71	12.7			
15			64.01	61	12.7			
16			73	53.6	12.7			
17			80.4	53	12.4			
18			98.2	54.9	11.8			
19			104.3	54.7	11.4			
20			104.3	51.9	11.17			
21			103.5	51.7	11.2			
22			110	43.87	11.2			
23		9	110.6	41.4	11.2			
24		8	122	38.5	11.2			
25		8	122	36	11.2			
26		8	82	34	11.2			
27		9	67	33	9.2			
28		9	57.7	31	9.2			
29		9	78.3	25	8.9			
30		9	94.1	21.9	8.9			
31			101.2		8.4			
<b>TOTAL (cfs)</b>	<b>0.00</b>	<b>69.00</b>	<b>1843.54</b>	<b>2002.03</b>	<b>399.87</b>	<b>13.20</b>	<b>0.00</b>	<b>0.00</b>
<b>Avg (cfs)</b>	<b>0.00</b>	<b>8.63</b>	<b>59.47</b>	<b>66.73</b>	<b>12.90</b>	<b>6.60</b>	<b>0.00</b>	<b>0.00</b>
<b>ACRE-FT</b>	<b>0.00</b>	<b>136.86</b>	<b>3656.66</b>	<b>3971.03</b>	<b>793.14</b>	<b>26.18</b>	<b>0.00</b>	<b>0.00</b>
<b>cummulative (AF)</b>	<b>0.00</b>	<b>136.86</b>	<b>3793.52</b>	<b>7764.55</b>	<b>8557.69</b>	<b>8583.87</b>	<b>8583.87</b>	<b>8583.87</b>

Total water delivered to date (af) = **8583.87**

**CLEAR CREEK DISTRIBUTION SYSTEM WATER DELIVERY  
WATER DISTRIBUTED TO IDAHO (cfs)**

DATE	MARCH	APRIL	MAY	JUNE	JULY	AUG	SEPT	OCT
1				85	19			
2				72.8	19			
3				68	18.1			
4				63.5	17			
5				69.9	15.3			
6				60				
7				53				
8				52.6				
9				46.2				
10			26.2	46				
11			14	43				
12			29.5	40				
13			43	39.7				
14			52.3	41.4				
15			64	30.7				
16			73	28.8				
17			46.6	24.2				
18			60	31				
19			66	30.8				
20			59.7	29.2				
21			60.7	29				
22			65	25				
23			64.4	23.5				
24			77	18.6				
25			76.2	19.9				
26			45	34				
27			38	33				
28			31	31				
29			52	25				
30			57	21.9				
31			62					
TOTAL (cfs)	0.00	0.00	1162.60	1216.70	88.40	0.00	0.00	0.00
Avg (cfs)	0.00	0.00	52.85	40.56	17.68	0.00	0.00	0.00
ACRE-FT	0.00	0.00	2306.02	2413.32	175.34	0.00	0.00	0.00
cummulative (AF)	0.00	0.00	2306.02	4719.34	4894.68	4894.68	4894.68	4894.68

Total water delivered to date (af) = **4894.68**

**CLEAR CREEK DISTRIBUTION SYSTEM WATER DELIVERY  
NAF IRRIGATION COMPANY (cfs)**

DATE	MARCH	APRIL	MAY	JUNE	JULY	AUG	SEPT	OCT
1			0	11				
2			0	12.7				
3			0	12				
4			0	11				
5			0	13.7				
6			0	11.5				
7			14	11				
8			16	11				
9			16	10.5				
10				9.5				
11				8.5	0			
12				8.5	10			
13				8	9			
14				7.5	11.2			
15				6.5	11.2			
16				6.5	11.2			
17			12	11	11.2			
18			10.2	10	10.6			
19			10	10	10.2			
20			10	8.5				
21			10	8.5				
22			10	4.7				
23		0	10	4.7				
24		0	11	4.7				
25		0	11	4.2				
26		0	9					
27		0	11					
28		0	9.9					
29		0	10					
30		0	11.5					
31			11					
<b>TOTAL (cfs)</b>	<b>0.00</b>	<b>0.00</b>	<b>202.60</b>	<b>225.70</b>	<b>84.60</b>	<b>0.00</b>	<b>0.00</b>	<b>0.00</b>
<b>Avg (cfs)</b>	<b>0.00</b>	<b>0.00</b>	<b>8.44</b>	<b>9.03</b>	<b>9.40</b>	<b>0.00</b>	<b>0.00</b>	<b>0.00</b>
<b>ACRE-FT</b>	<b>0.00</b>	<b>0.00</b>	<b>401.86</b>	<b>447.68</b>	<b>167.80</b>	<b>0.00</b>	<b>0.00</b>	<b>0.00</b>
<b>cummulative (AF)</b>	<b>0.00</b>	<b>0.00</b>	<b>401.86</b>	<b>849.53</b>	<b>1017.34</b>	<b>1017.34</b>	<b>1017.34</b>	<b>1017.34</b>

Total water delivered to date (af) = **1017.34**

**CLEAR CREEK DISTRIBUTION SYSTEM WATER DELIVERY  
CLEAR VALLEY RANCH (cfs)**

DATE	MARCH	APRIL	MAY	JUNE	JULY	AUG	SEPT	OCT
1				6				
2				4.6				
3				4.6				
4				4.5				
5				4.8				
6				4.6				
7				4.5				
8				4.5				
9				3.1				
10				3.1				
11				3.1				
12				3.1				
13				3				
14				2.7				
15				2.7				
16				2.7				
17								
18			4	2.2				
19			4	2.2				
20			4	2.7	4			
21			4	2.7	4			
22			4	2.7	4			
23			4.5	2.7	4			
24			4	2.7	4			
25			4	0	4			
26			1.7		4			
27			1.5					
28			1.5					
29								
30								
31			0					
<b>TOTAL (cfs)</b>	<b>0.00</b>	<b>0.00</b>	<b>37.20</b>	<b>79.50</b>	<b>28.00</b>	<b>0.00</b>	<b>0.00</b>	<b>0.00</b>
<b>Avg (cfs)</b>	<b>0.00</b>	<b>0.00</b>	<b>3.10</b>	<b>3.31</b>	<b>4.00</b>	<b>0.00</b>	<b>0.00</b>	<b>0.00</b>
<b>ACRE-FT</b>	<b>0.00</b>	<b>0.00</b>	<b>73.79</b>	<b>157.69</b>	<b>55.54</b>	<b>0.00</b>	<b>0.00</b>	<b>0.00</b>
<b>cummulative (AF)</b>	<b>0.00</b>	<b>0.00</b>	<b>73.79</b>	<b>231.47</b>	<b>287.01</b>	<b>287.01</b>	<b>287.01</b>	<b>287.01</b>

Total water delivered to date (af) = **287.01**

**CLEAR CREEK DISTRIBUTION SYSTEM WATER DELIVERY  
DAVE SUNDBERG (cfs)**

DATE	MARCH	APRIL	MAY	JUNE	JULY	AUG	SEPT	OCT
1				5.4	0			
2				4.18	0			
3				4.18	0			
4				5	0			
5				5	0			
6				5.8	0.75			
7			0	4.4	0.75			
8			0.97	4.4	0.7			
9			0.97	3.9	1.5			
10			0	3.3	1.5			
11			0	3.5	1.5			
12			0	3.5	1.5			
13			0	3.1	1.5			
14			0	3.9	1.5			
15			0	2.7	1.5			
16			0	2.7	1.5			
17			3.82	2.9	1.2			
18			4.5	2.7	1.2			
19			4.6	2.7	1.2			
20			5.2	2.7	0.97			
21			4.18	2.7				
22			5.1	2.07				
23			5.3	1.5				
24			5	1.4				
25			5.8	1.2				
26			3.11	0				
27			3.11	0				
28			2.8	0				
29			4.5	0				
30			5	0				
31			6.5	0				
<b>TOTAL (cfs)</b>	<b>0.00</b>	<b>0.00</b>	<b>70.46</b>	<b>84.83</b>	<b>18.77</b>	<b>0.00</b>	<b>0.00</b>	<b>0.00</b>
<b>Avg (cfs)</b>	<b>0.00</b>	<b>0.00</b>	<b>2.82</b>	<b>2.74</b>	<b>0.94</b>	<b>0.00</b>	<b>0.00</b>	<b>0.00</b>
<b>ACRE-FT</b>	<b>0.00</b>	<b>0.00</b>	<b>139.76</b>	<b>168.26</b>	<b>37.23</b>	<b>0.00</b>	<b>0.00</b>	<b>0.00</b>
<b>cummulative (AF)</b>	<b>0.00</b>	<b>0.00</b>	<b>139.76</b>	<b>308.02</b>	<b>345.25</b>	<b>345.25</b>	<b>345.25</b>	<b>345.25</b>

Total water delivered to date (af)= **345.25**

**CLEAR CREEK DISTRIBUTION SYSTEM WATER DELIVERY  
MONT CAMPBELL (cfs)**

DATE	MARCH	APRIL	MAY	JUNE	JULY	AUG	SEPT	OCT
1			9	9.5				
2			9	8.7				
3			9	8.7				
4			9	12				
5			9	11.7				
6			13	14	10			
7				12.5	10			
8				12.5	10			
9				13.8	10			
10				8	10			
11				8	10			
12				8				
13				7.7				
14				7.5				
15				7				
16				7				
17			11.5	9				
18			13	9				
19			13	9				
20			13	8.8	6.2			
21			12	8.8	7.2			
22			13.5	9.4	7.2			
23		9	13.5	9	7.2			
24		8	12	6.6	7.2			
25		8	12	6.2	7.2			
26		8	11	0	7.2			
27		9	9.1					
28		9	8.5					
29		9	8.3					
30		9	9.4					
31			9.4					
<b>TOTAL (cfs)</b>	<b>0.00</b>	<b>69.00</b>	<b>227.20</b>	<b>232.40</b>	<b>109.40</b>	<b>0.00</b>	<b>0.00</b>	<b>0.00</b>
<b>Avg (cfs)</b>	<b>0.00</b>	<b>8.63</b>	<b>10.82</b>	<b>8.94</b>	<b>8.42</b>	<b>0.00</b>	<b>0.00</b>	<b>0.00</b>
<b>ACRE-FT</b>	<b>0.00</b>	<b>136.86</b>	<b>450.65</b>	<b>460.97</b>	<b>216.99</b>	<b>0.00</b>	<b>0.00</b>	<b>0.00</b>
<b>cummulative (AF)</b>	<b>0.00</b>	<b>136.86</b>	<b>587.51</b>	<b>1048.48</b>	<b>1265.47</b>	<b>1265.47</b>	<b>1265.47</b>	<b>1265.47</b>

Total water delivered to date (af)= **1265.47**



**CLEAR CREEK DISTRIBUTION SYSTEM WATER DELIVERY  
HYRUM CAMPBELL (cfs)**

DATE	MARCH	APRIL	MAY	JUNE	JULY	AUG	SEPT	OCT
1				5.4			5	
2				4.8			3	
3				4.8				
4				5.7				
5				5.3				
6				5				
7				5				
8				5				
9				3.9				
10				3.9				
11				3.9	0			
12				3.7	3.5			
13				5	2			
14				5				
15				4.1				
16								
17								
18								
19								
20			5.7					
21			5.7					
22			5.5					
23			6					
24			6					
25			6					
26			5.9					
27			4.3					
28			4					
29			3.5					
30			3.5			5		
31			4.5			5		
TOTAL (cfs)	0.00	0.00	60.60	70.50	15.50	8.00	0.00	0.00
Avg (cfs)	0.00	0.00	5.05	4.70	3.10	4.00	0.00	0.00
ACRE-FT	0.00	0.00	120.20	139.84	30.74	15.87	0.00	0.00
cummulative (AF)	0.00	0.00	120.20	260.04	290.78	306.65	306.65	306.65

Total water delivered to date (af) = **306.65**

**CLEAR CREEK DISTRIBUTION SYSTEM WATER DELIVERY  
LARRY KEMPTON (cfs)**

DATE	MARCH	APRIL	MAY	JUNE	JULY	AUG	SEPT	OCT
1				8		2.2		
2				6.2		3		
3				6.2				
4				4.6				
5				4.6				
6				4.4	3.3			
7				4.4	3.3			
8				4.4	3.5			
9				3.5	3.5			
10				3.5	3.5			
11				3.5	3.5			
12				3.3				
13				3.3				
14				3				
15				7.3				
16				5.9				
17			6.5	5.9				
18			6.5					
19			6.7					
20			6.7					
21			6.9					
22			6.9					
23			6.9	0				
24			7	4.5				
25			7	4.5				
26			6.2					
27					9.2			
28					9.2			
29					8.9			
30			7.7		3.9			
31			7.8		3.4			
<b>TOTAL (cfs)</b>	<b>0.00</b>	<b>0.00</b>	<b>82.80</b>	<b>91.00</b>	<b>55.20</b>	<b>5.20</b>	<b>0.00</b>	<b>0.00</b>
<b>Avg (cfs)</b>	<b>0.00</b>	<b>0.00</b>	<b>6.90</b>	<b>4.55</b>	<b>5.02</b>	<b>2.60</b>	<b>0.00</b>	<b>0.00</b>
<b>ACRE-FT</b>	<b>0.00</b>	<b>0.00</b>	<b>164.23</b>	<b>180.50</b>	<b>109.49</b>	<b>10.31</b>	<b>0.00</b>	<b>0.00</b>
<b>cummulative (AF)</b>	<b>0.00</b>	<b>0.00</b>	<b>164.23</b>	<b>344.73</b>	<b>454.22</b>	<b>464.54</b>	<b>464.54</b>	<b>464.54</b>

Total water delivered to date (af) = **464.54**

**CLEAR CREEK DISTRIBUTION SYSTEM WATER DELIVERY  
DUANE CAMPBELL (cfs)**

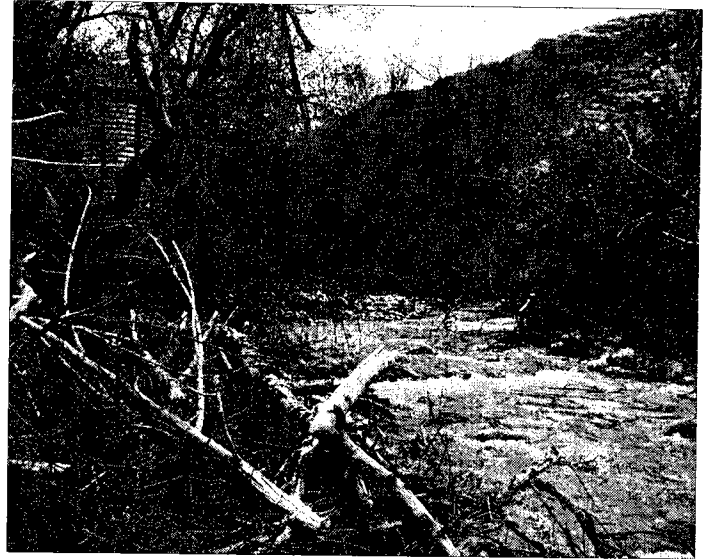
DATE	MARCH	APRIL	MAY	JUNE	JULY	AUG	SEPT	OCT
1								
2								
3								
4								
5								
6								
7								
8								
9								
10								
11								
12								
13								
14								
15								
16								
17								
18								
19								
20								
21								
22								
23								
24								
25								
26								
27								
28								
29								
30								
31								
<b>TOTAL (cfs)</b>	<b>0.00</b>	<b>0.00</b>	<b>0.00</b>	<b>0.00</b>	<b>0.00</b>	<b>0.00</b>	<b>0.00</b>	<b>0.00</b>
<b>Avg (cfs)</b>	<b>0.00</b>	<b>0.00</b>	<b>0.00</b>	<b>0.00</b>	<b>0.00</b>	<b>0.00</b>	<b>0.00</b>	<b>0.00</b>
<b>ACRE-FT</b>	<b>0.00</b>	<b>0.00</b>	<b>0.00</b>	<b>0.00</b>	<b>0.00</b>	<b>0.00</b>	<b>0.00</b>	<b>0.00</b>
<b>cummulative (AF)</b>	<b>0.00</b>	<b>0.00</b>	<b>0.00</b>	<b>0.00</b>	<b>0.00</b>	<b>0.00</b>	<b>0.00</b>	<b>0.00</b>

Total water delivered to date (af) = **0.00**

CLEAR CREEK DISTRIBUTION SYSTEM DIVERSIONS (5/8/98)



1: Ray Jones Ditches 3 & 4



2: USGS GAGING STATION



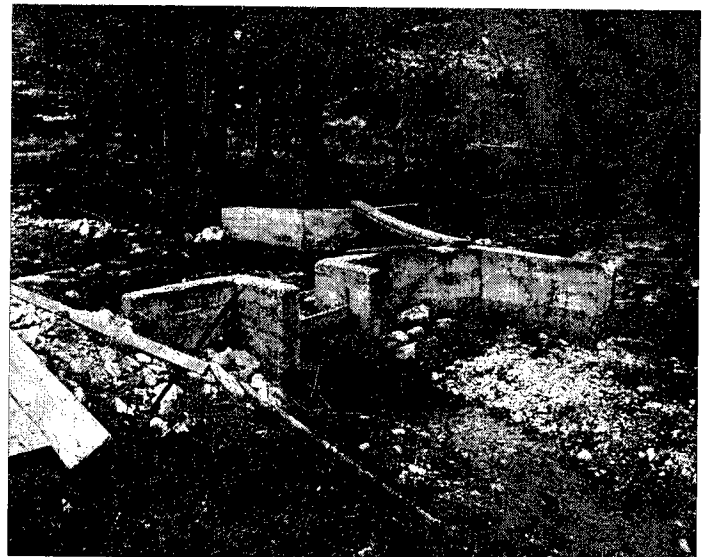
3: CEMENT DITCH - SUNDBERG DIV



4: ROCK POURING DITCH



5: DAVE SUNDBERG



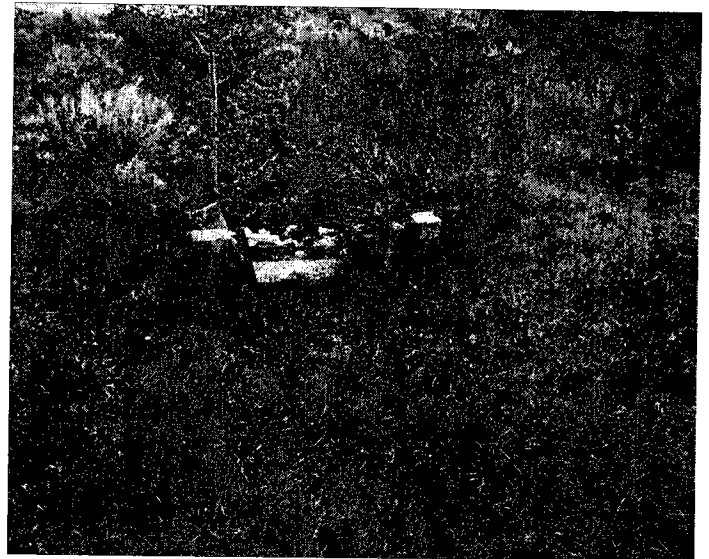
6: DAVE SUNDBERG

Date: 5/8/98

CLEAR CREEK DISTRIBUTION SYSTEM DIVERSIONS (5/8/98)



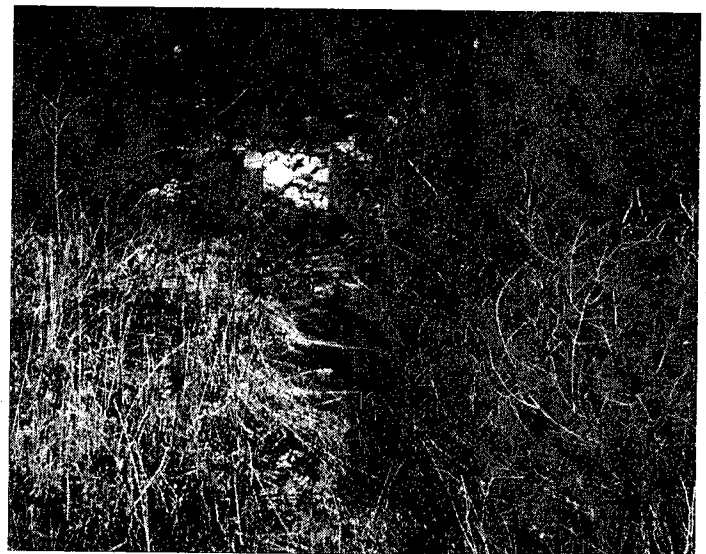
7: SCOTFIELD UPPER DITCH



8: SCOTFIELD UPPER WEIR



9: SCOTFIELD SECOND DIV.



10: SCOTFIELD SECOND DIV.

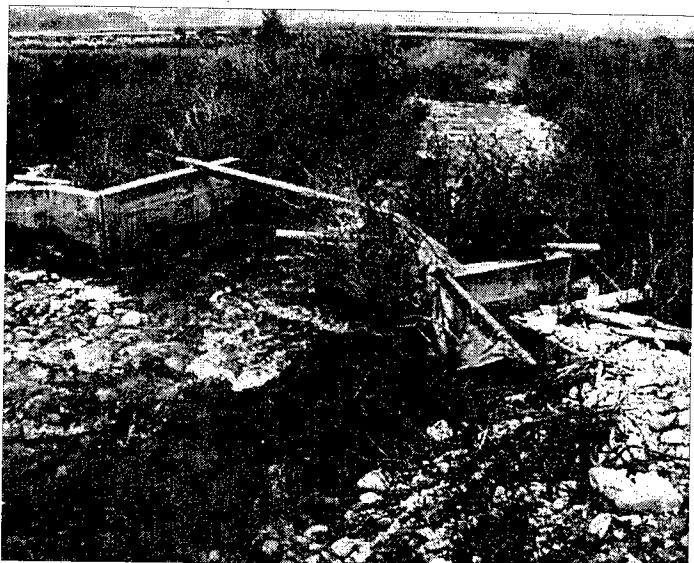


11: SCOTFIELD SECOND DIV WEIR



12: RAY JOSS DITCH 3 & 4

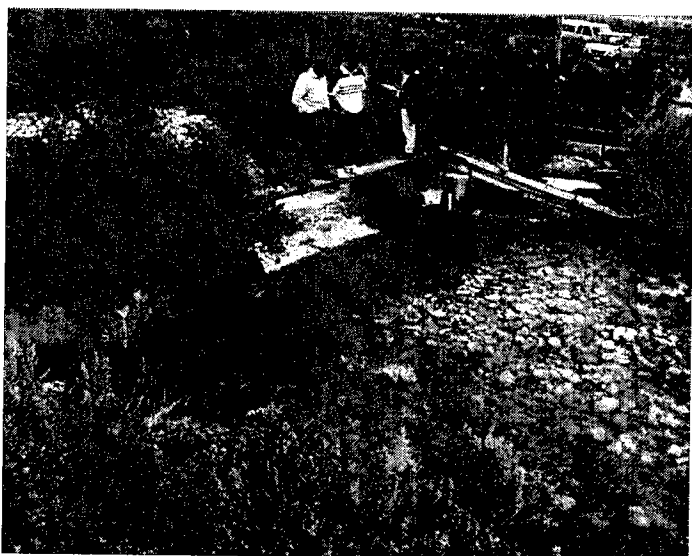
CLEAR CREEK DISTRIBUTION SYSTEM DIVERSIONS (5/8/98)



13: RAY JOSS DITCH DIV



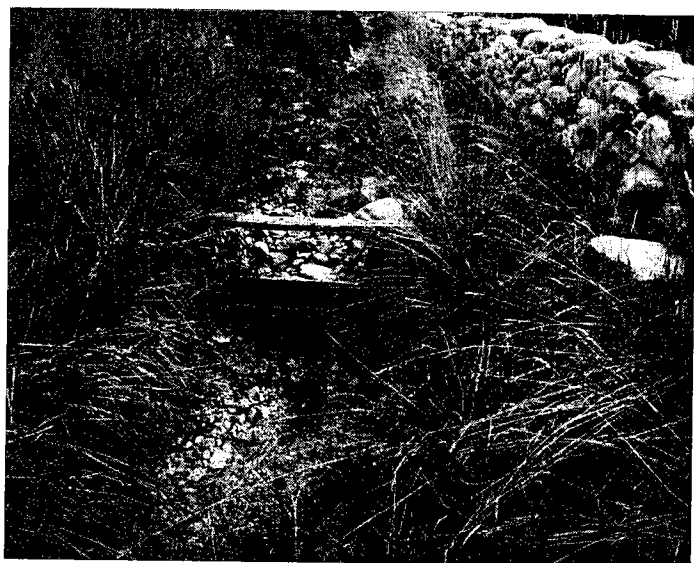
14: IDAHO WEIR



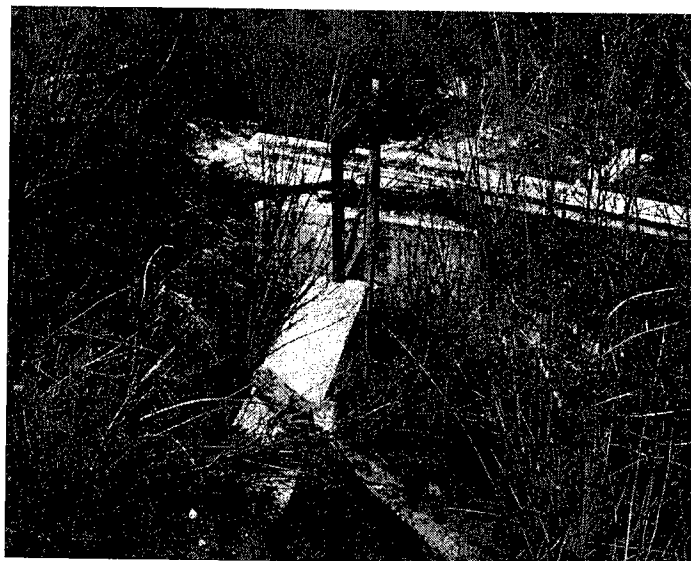
15: UTAH - IDAHO DIVERSION



16: JONES & HOSKING DITCH

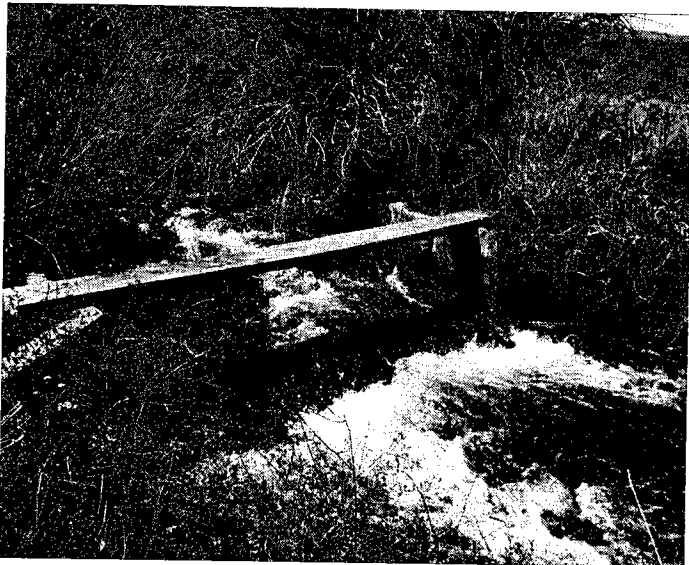


17: MONT CAMPBELL (SIZE DITCH)

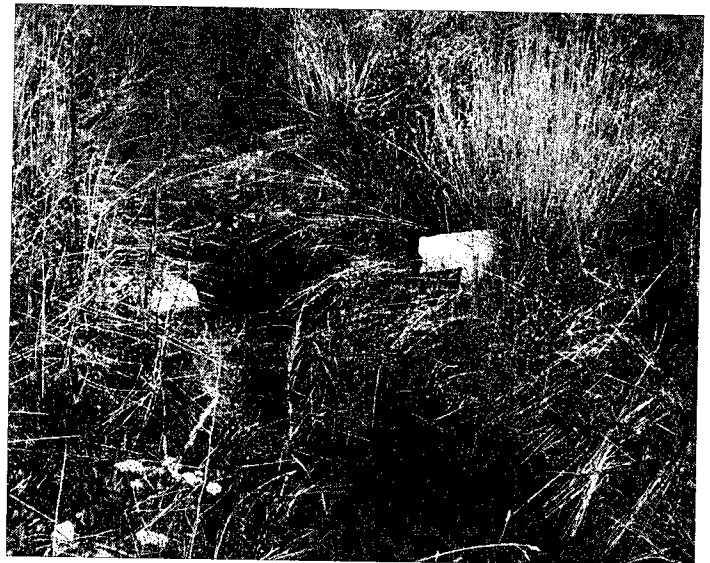


18: SCHOOL HOUSE

CLEAR CREEK DISTRIBUTION SYSTEM DIVERSIONS (5/8/98)



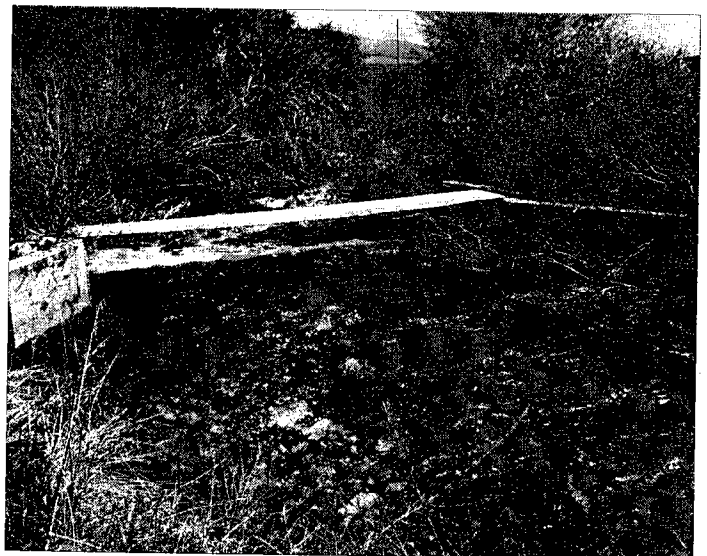
19: MONT CAMPBELL DIV



20: SCHOOL HOUSE WEIR



21: STOCKS DITCH WEIR



22: STOCKS DITCH DIV.



23: STAGE CROSSING (LARRY KEMPTON)

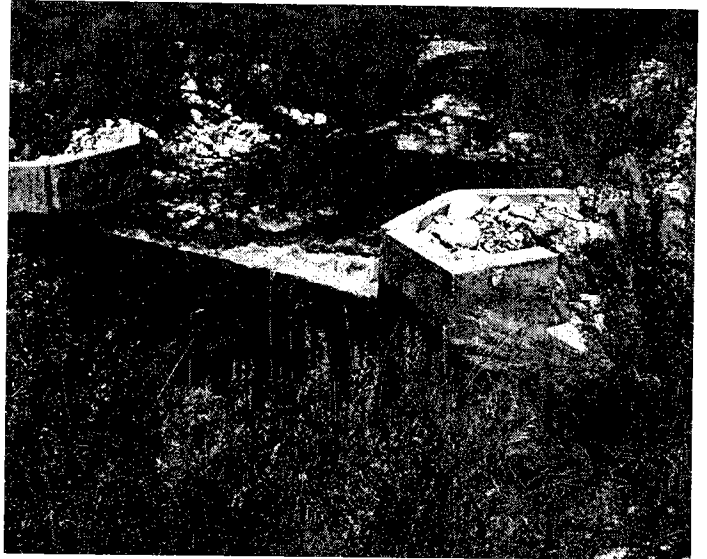


24: LARRY KEMPTON

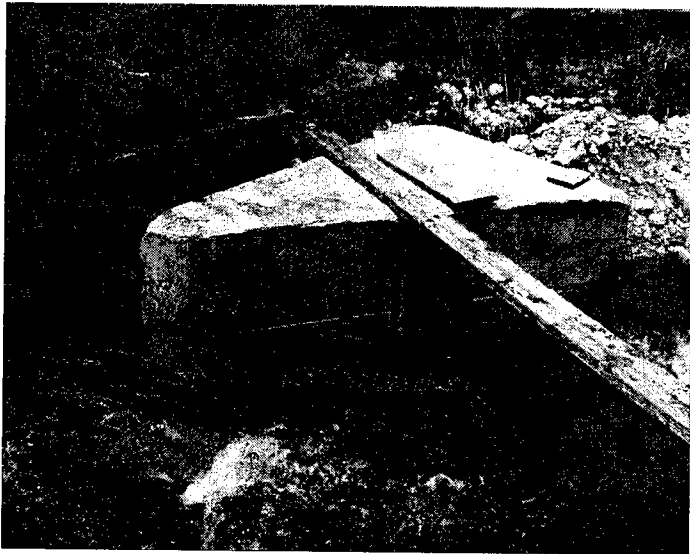
CLEAR CREEK DISTRIBUTION SYSTEM DIVERSIONS (5/8/98)



25: LARRY KEMPTON SOUTH WEIR



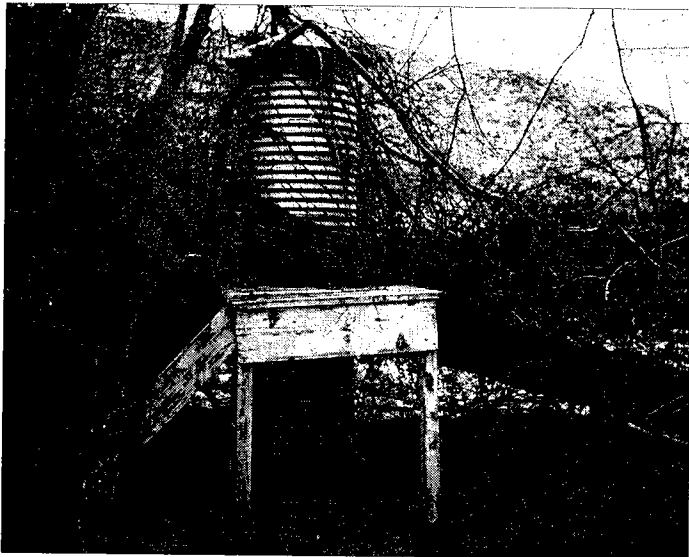
26: WARD JENSEN DIV.



27: RAY JONES DITCH 1 & 2



28: RAY JONES DITCH 3 & 4



29: USGS GAGING STATION