



Photo #1: Batruel diversion ditch to reservoir at the Trail canal crossing, turned off



Photo #2: Diversion ditch looking south from the road at the Trail Canal crossing.



Little Canyon Creek Water District Cont.-



Photo #3: Little Canyon Creek Diversion to Trail Reservoir, canal near max flow.

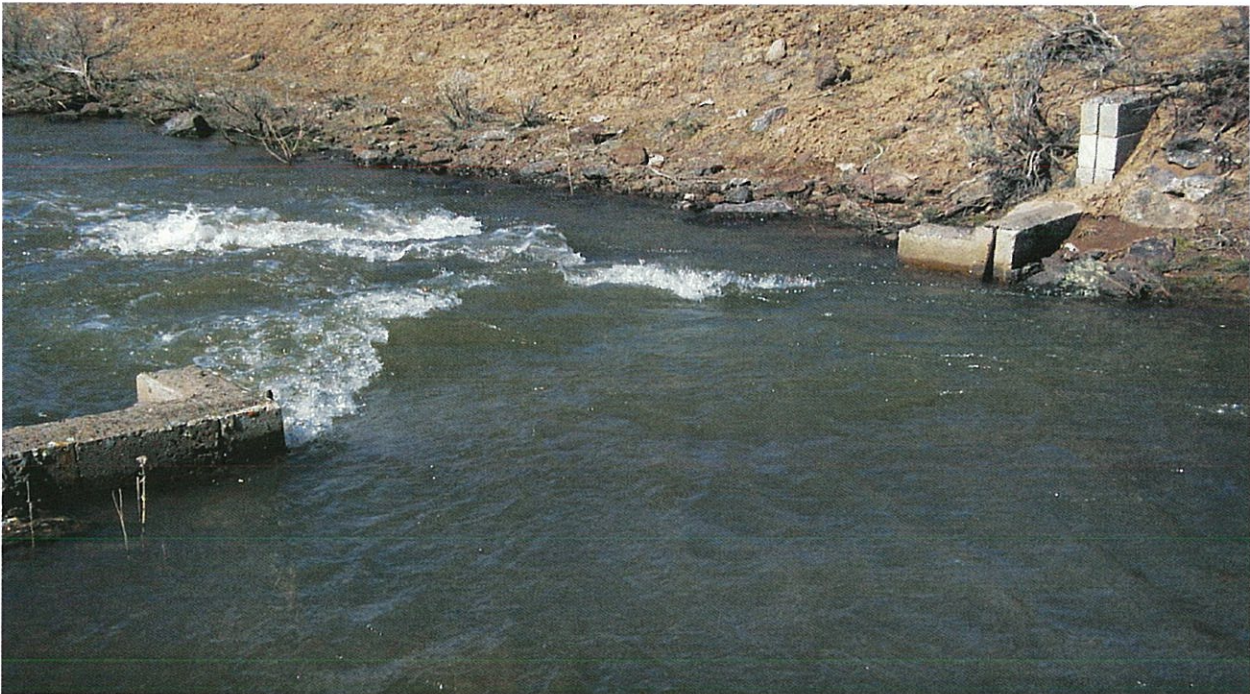


Photo #4: Trail Reservoir canal flow at weir; weir is submerged 1+ ft.