

# WATERMASTER'S ANNUAL REPORT

From: February 1 \_\_\_\_\_, 2021 To: January 31 \_\_\_\_\_, 202022

RECEIVED

Water District No. 100

FEB 11 2022

Water District Name: Water District 100

Department of Water Resources  
Eastern Region

Name of Watermaster: Blake Jordan

Mailing Address: 900 N Skyline Dr Ste. A, Idaho Falls, ID 83402

## AFFIDAVIT OF WATERMASTER

As the appointed watermaster of water district no. 100, I hereby certify that the information contained in this report is true and correct to the best of my knowledge.

  
Watermaster signature

2/8/2022

Date

Pursuant to Section 42-606 Idaho Code, this Watermaster's Annual Report shall be filed prior to the end of the watermaster's appointment for the current year, and kept in the office of the Idaho Department of Water Resources (IDWR). The Watermaster's Daily Diversion Records should be attached to this report if those records are not submitted electronically to IDWR.

# WATER DISTRICT 100

## 2021 WATER MASTER REPORT

Measurements were conducted by Water District 100 staff in accordance with the Water District 100 resolutions and IDWR guidelines. Specific measurement information for the diversions within the district can be found in IDWR's WMIS database. In addition to measurements activities, water district staff reviewed arial photos and diversion records to identify any enforcement issues within the district and contacted water users as necessary to address any apparent violations. Financial report, minutes, resolutions, and assessment records are summarized and attached in separate documents.

X   
\_\_\_\_\_  
Blake Jordan  
Watermaster

**2021  
Water District 100's Annual  
Meeting**

**January 25, 2022**

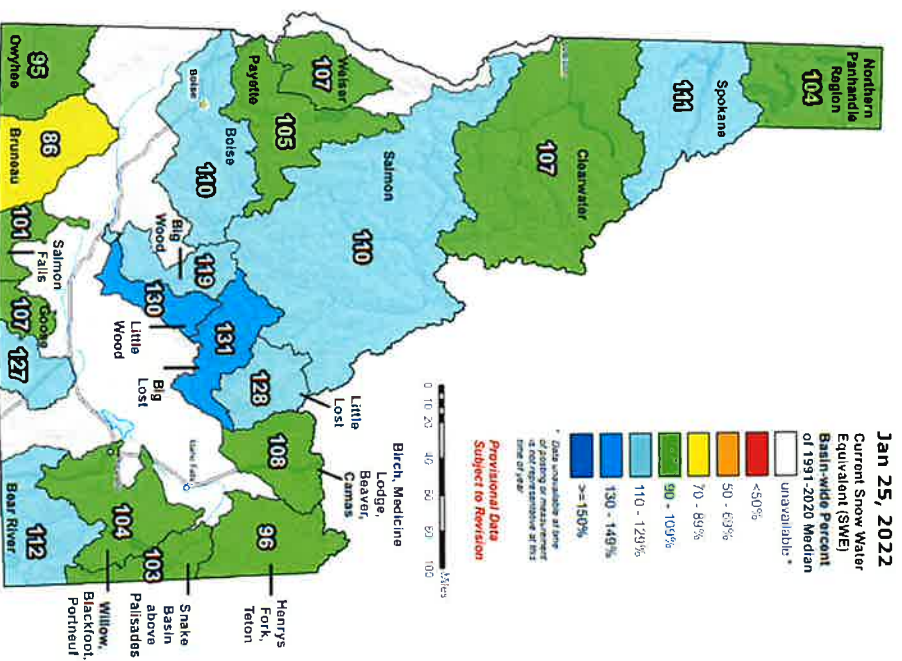
**IDAHO** Department of  
**Water Resources**

# 2022 Water Outlook

- Call for water?
- Snow Water Equivalents
- Reservoir levels



Idaho SNOTEL Current Snow Water Equivalent (SWE) % of Normal



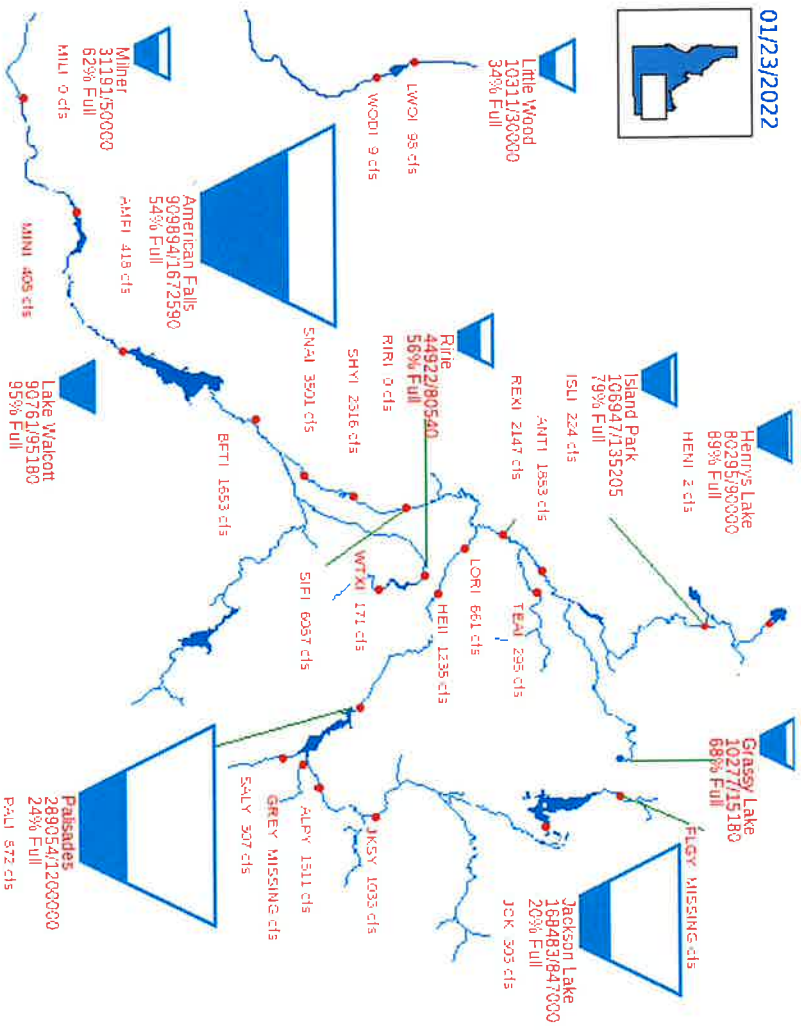
The above water equivalent content of forested lands is the current snow water equivalent found at selected SNOTEL sites in our area. The basin equipped to the average value for these sites on this day. Data based on the last reading of the day (typically 00:00).

Prepared by:  
 USGS/NRCS National Water and Climate Center  
 Pullman, Oregon  
<https://www.nrcs.usda.gov/wps/wcm/connect/nrcs>



# Bureau of Reclamation, Pacific Northwest Region Major Storage Reservoirs in the Upper Snake River Basin

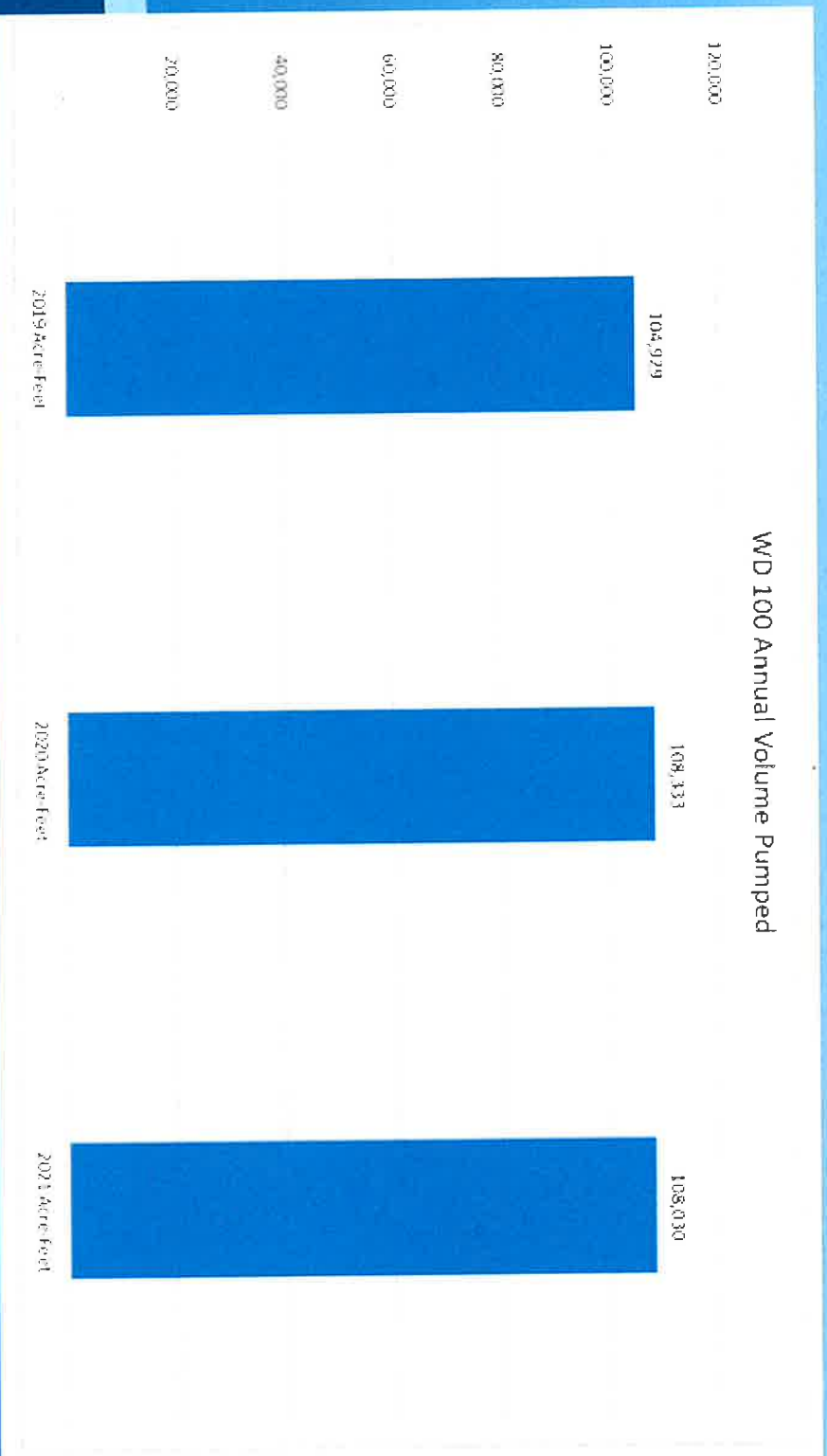
01/23/2022



PROVISIONAL DATA - Subject to change



# WD 100 Annual Volume Pumped



**Annual volumes  
Pumped in Acre Feet**

**2019: 104,929 AF**

**2020: 108,333 AF**

**2021: 108,030 AF**

# Snake River Plain Aquifer

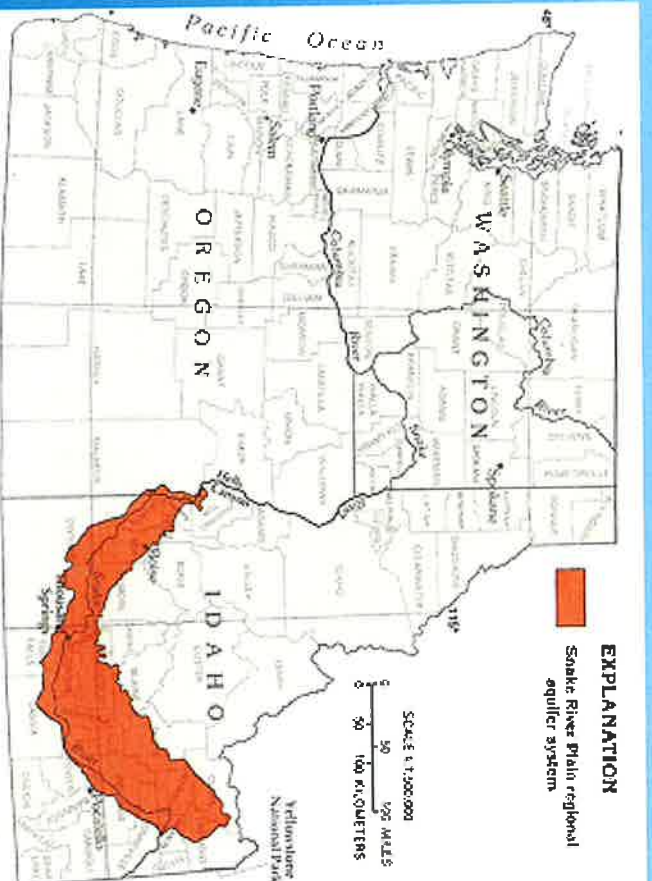


Figure 1. Map showing the location of the Snake River Plain. From [http://pubs.usgs.gov/of/ofa730/ch\\_w/H-Snake\\_River1.html](http://pubs.usgs.gov/of/ofa730/ch_w/H-Snake_River1.html)

The Snake River Plain controls the economy of much of southern Idaho, north and west of Pocatello. Three million acres of farmland on the Snake River Plain are irrigated, with approximately one third from wells and the remaining two thirds from canals.

*(Digital Geology of Idaho)*

# Eastern Snake River Plain Aquifer Recharge

The 2018 Recharge program set a record by recharging more than 525,000 acre-feet of water into the aquifer, doubling the annual goal.

The Snake River plain aquifer rose by more than 1.7 million acre-feet in one year, the largest single-year increase in 8 decades. The Recharge Board has committed to recharging an average of 250,000 acre-feet of water into the ESPA each year. 2019 was the third consecutive year to exceed the annual goal. There are more than 25 recharge basins/sites in the ESPA.



Recharge for the 20/21 is reported to have been 130,463 AF.



## Farm & food sectors have massive impact on U.S. & Idaho economy

According to the Financial Condition report, Idaho farmers and ranchers brought in \$8.88 billion in farm cash receipts during 2021, which was 9 percent higher than the 2020 total and above the previous record of \$8.79 billion set in 2014.

Idaho's top crop, potatoes, brought in a record \$1 billion in cash receipts during 2021, according to the report. That was an 8 percent increase over 2020.

Cash receipts for Idaho's wheat industry totaled \$560 million in 2021, a 3 percent increase, and cash receipts for the state's hay farmers totaled \$554 million, a 21 percent increase compared with 2020.

Idaho sugar beet farmers brought in \$396 million during 2021, 19 percent more than during 2020, and Idaho barley growers brought in \$246 million in cash receipts last year, a 3 percent increase.



*Information from Idaho Farm Bureau Federation January 7, 2021*

# Field Season Review

- **All measuring devices should be inspected by the owner/operator prior to the beginning of the irrigation season and at other interim times.** IDWR staff will be doing spot checks during the irrigation season and notifying owner/operators of any deficiencies or maintenance issues. Owner/operators will be given a limited time to fix any issue.
- **Meters with batteries: Make sure batteries are checked prior to beginning of irrigation season.** Replace them if indicator shows  $\frac{1}{2}$  or less power remaining (check with your dealer/manufacturer). Most battery life on approved meters is listed as 3 to 5 years. We are starting to see the Lindsay GrowSmart meters with blank displays which is probably a result of a dead battery.

# 2021 Field Season Review

- Flow meter calibrations

Non approved meters that received a variance will need to be calibrated every 3 years. (Primarily subdivisions and municipalities)

- End of the year readings

Power to non-battery flow meters needs to be left on through the end of November so readings can be obtained. Meters need to be wired so that when the pump is turned off during irrigation season the meter power is still on allowing meters be read.

- Flow meter inspections

Flow meter spot checks and mid and end of year meter readings found meters that were not working. Owners should be receiving letters from the Boise IDWR Office concerning the nonworking meters. These meters need to be repaired and working by the beginning of the 2022 irrigation season.

# Protecting your meters from the elements!

- Title 42-607 **Measuring devices must be kept in good working order**
- Suggestions for Protecting Meters
  - 3-5 gallon plastic bucket
  - Piece of Conveyor Belt



# Meters issues in the Field, 2021

Sparling meters registering gallons while not pumping



Sparling meters with blank screen



Valmont meter with blank screen



Seametrics meter with moisture in display



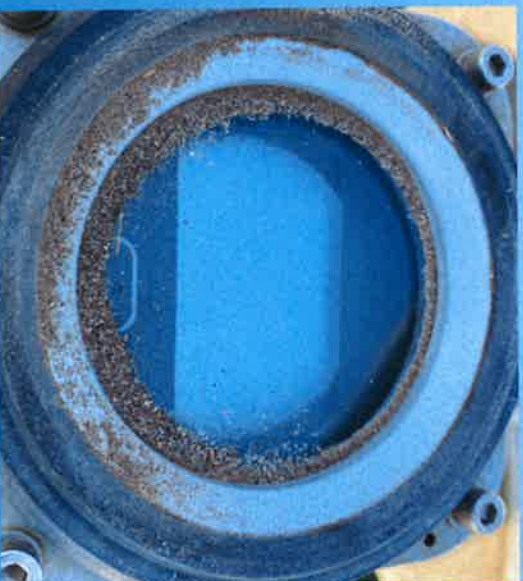
# Meters issues in the Field, 2021

This type of meter needs a protective covering for screen (plastic)



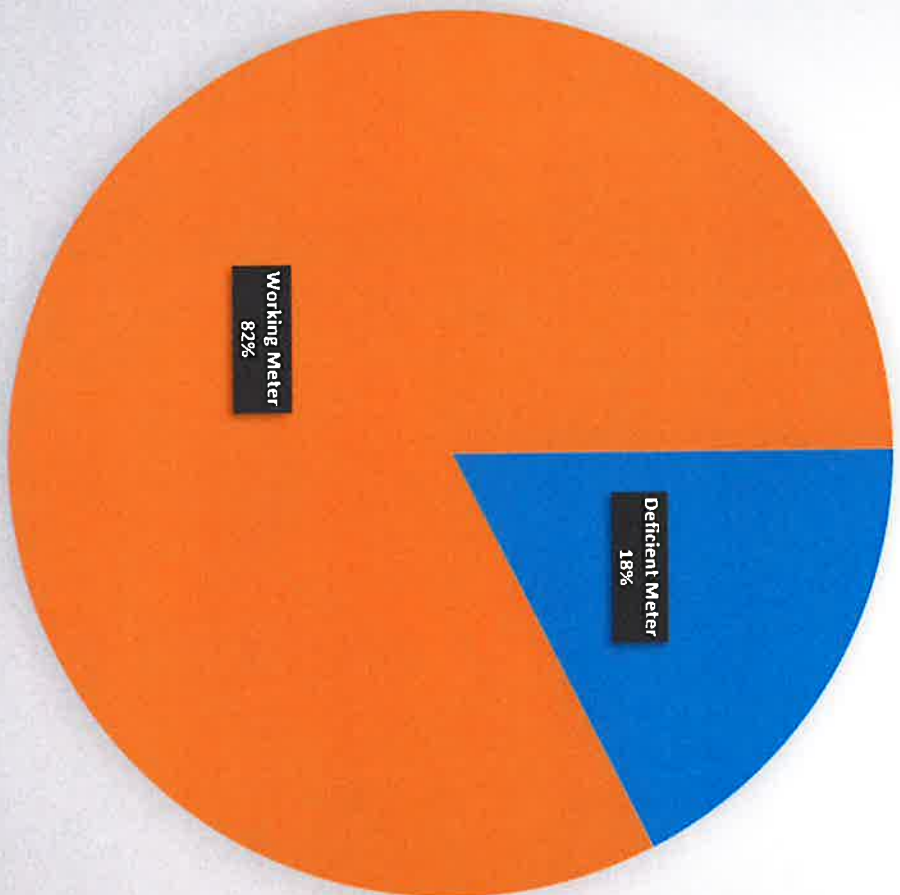
McCrometer Meters

Batteries need to be replaced in GrowSmart Meters every 2-3 years



GrowSmart Meters

## WD 100 Working Meters

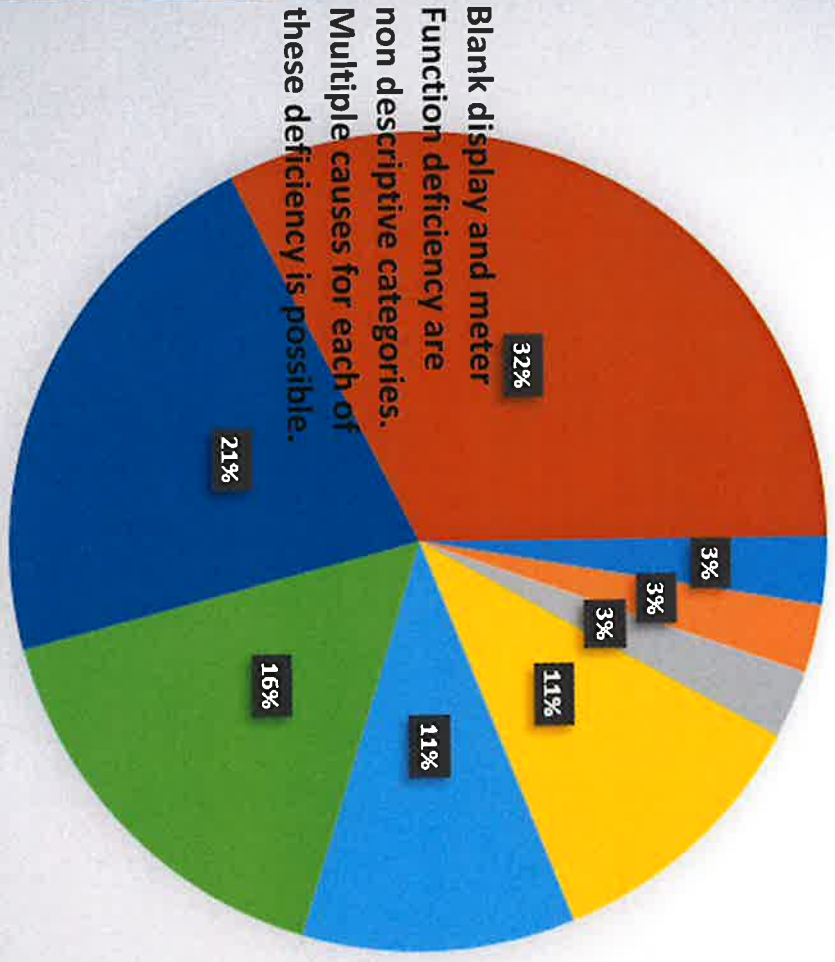


■ Deficient Meter  
■ Working Meter





## WD 100 Meter Malfunction Summary



Blank display and meter function deficiency are non descriptive categories. Multiple causes for each of these deficiency is possible.

- Power Off
- Negative Flow
- No Meter
- No Auxillary Power
- Other
- Moisture in Display
- Meter Function Deficiency
- Blank Display



If you have these meters, they **need to be protected** from the elements!

Unprotected  
McCrometer Ultra Mag



Unprotected Siemens  
Sitrans F M Mag 5100 W  
or 5000



Protected meter head,  
this is probably the best  
that we have seen in the  
field.

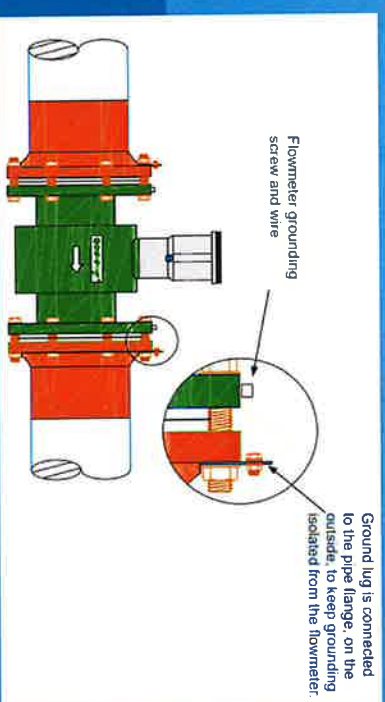
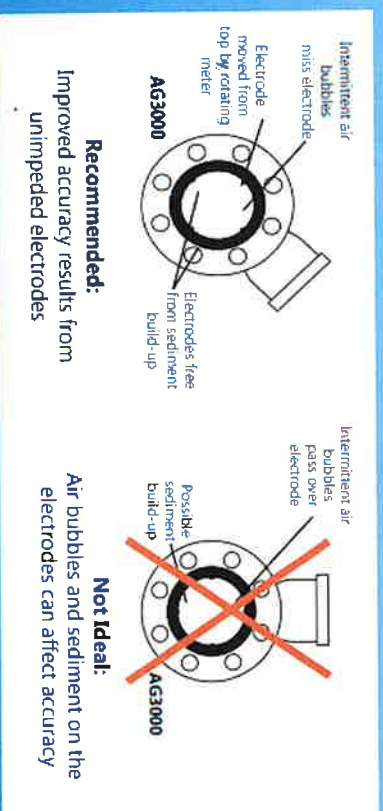


“No direct sunlight exposure”  
Unprotected Siemens 8000



# Review Installation Requirements

- Orientation of Meter
- Grounding
- External power requirements
  - Power Source
    - Solar Panel
    - AC/DC transformer
- Battery meters requiring external power
  - AG 3000
  - Valley 3000
  - McCrometer Duramag



# Approved Installations

Lindsay GrowSmart meters can be installed at an angle or in a vertical position. Grounding wires required. Battery operated.



Sparling meters need external power & grounding wires. Usually installed in vertical position, but can be at angle.

Seametrics AG 3000 and Valley 3000 meters need to be installed at an angle & have grounding wires. Require alternate power source.



# Approved Installations

Siemens Sitrans 5100W  
5000 Series. External  
power needed, internally  
grounded, install  
vertically. Protect meter  
readout from weather.



McCrometer Duramag,  
battery operated but  
requires external DC  
power supply,  
grounding wires required.



Siemens Sitrans F M Mag 8000 ,  
battery operated, external power not  
needed, internally grounded. Protect  
meter readout from weather.



McCrometer Ultra  
Mag, external  
power, grounding  
wires required.  
Protect meter  
readout from  
weather.

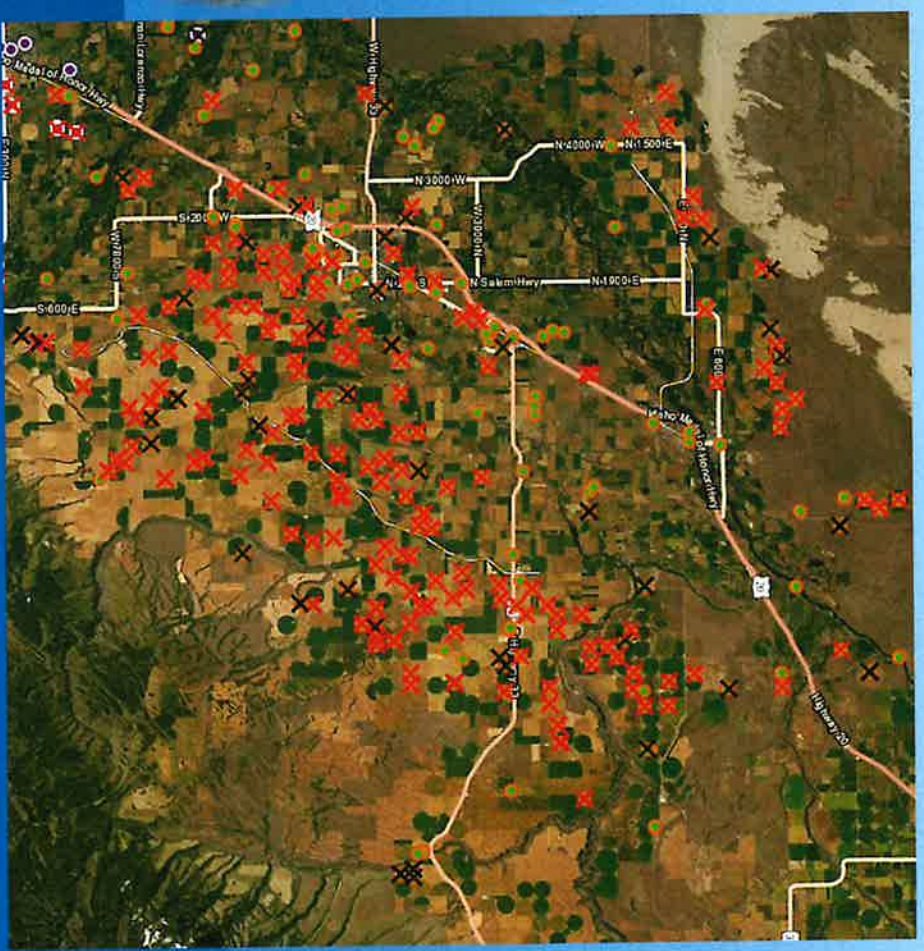
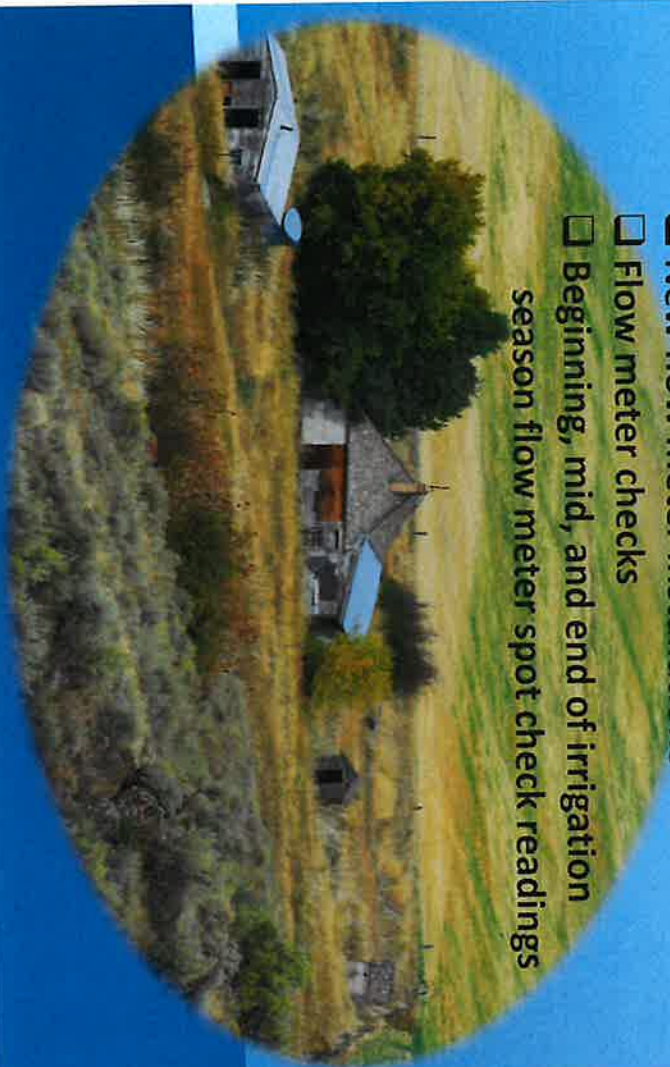


# Water District 100 Site Visits for 2021

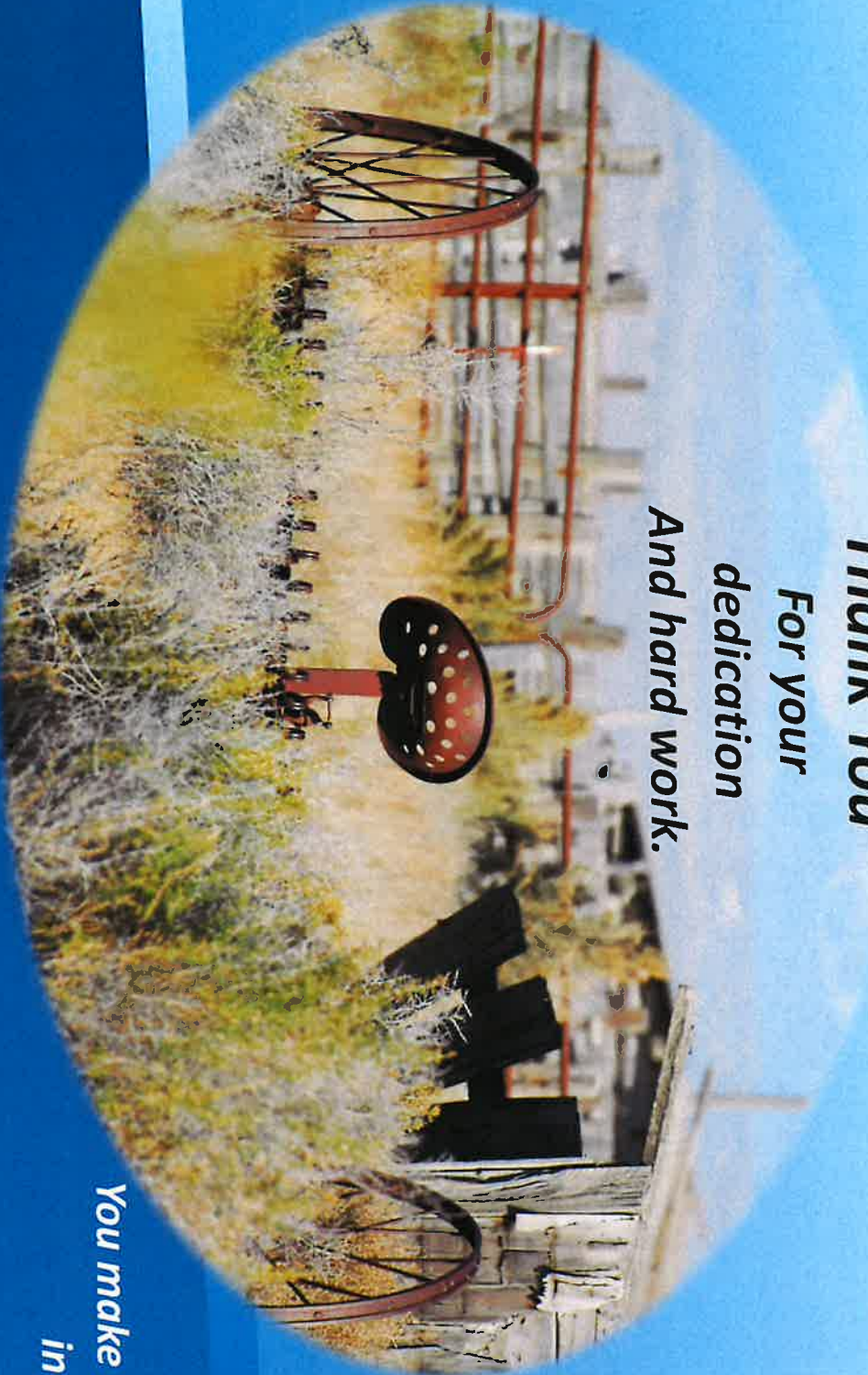
Over 300+ site visits by IDWR employees

Included

- New flow meter installations
- Flow meter checks
- Beginning, mid, and end of irrigation season flow meter spot check readings



**Thank You**  
**For your**  
**dedication**  
**And hard work.**



***You make a positive difference  
in the World!***

WATER DISTRICT 100

OwnerName	WMISNumber	Mess Option	MetalTagNumber	2017 AF	2018 AF	2019 AF	2020 AF	2021 AF
ARTCO INC	200524	Flowmeter (8)	E0007498			21.98999977	223.1100006	
BASIC AMERICAN INC	200527	Flowmeter (8)	E0006916	871.7600098	816.9699707	885.2700195	791.6699829	1019.909973
BASIC AMERICAN INC	200611	Unused (6)	A0008756					
BASIC AMERICAN INC	200680	Unused (6)	A0006987					
BASIC AMERICAN INC	200754	Flowmeter (8)	E0006988	120.3000031	17.31999969	264.6499939	240.7200012	790.0100098
CITY OF REXBURG	200511	Flowmeter (8)	E0007494		594.210022	544.7399902	480.6600037	252.5
CITY OF REXBURG	200525	Flowmeter (8)	E0007490	1086.150024	900.5499878	1287.170044	712.0100098	17.7
CITY OF REXBURG	200711	Flowmeter (8)	E0007492		1408.75	1160.099976	1170.98999	865.3
CITY OF REXBURG	200712	Flowmeter (8)	E0007491		0	0	0	0
CITY OF REXBURG	200713	Flowmeter (8)	E0007495		212.6600037	190.2599945	287.2600098	304.2
CITY OF REXBURG	200714	Flowmeter (8)	E0007493		1197.380005	1136.069946	1449.829956	1430.9
CITY OF REXBURG	100638	Flowmeter (1)	A0018277		25.30999947	20.57999992	31.69000053	0
CITY OF REXBURG	1002939	Flowmeter (8)	D0059955		423.75	223.2599945	102.5599976	142.4
CITY OF REXBURG	1003140	Flowmeter (1)					399.3699951	1512.6
CITY OF REXBURG	1003141	Flowmeter (1)					260.480011	1401.3
CITY OF REXBURG	1003174	Flowmeter (1)	A0012224		152.2100067	192.8300018	1.340000033	0
CITY OF REXBURG	1003176	Timeclock (7)	A0012225		28.36000061	77.11000061	145.3200073	0.029999999
CITY OF REXBURG	1003907	Flowmeter (8)						
CITY OF SUGAR CITY	101642	Flowmeter (8)	E0007511	8.789999962	130.6699982	223.1000061	371.9599915	308.980011
CITY OF SUGAR CITY	101643	Flowmeter (8)	E0007510	0.140000001	85.12999725	40.77000046	20.67000008	4.78000021
CITY OF SUGAR CITY	101644	Flowmeter (8)	E0007509	0.330000013	156.4100037	222.5800018	142.6999969	50.06999969
CITY OF SUGAR CITY	1003202	Flowmeter (8)						
CITY OF SUGAR CITY	1003291	Flowmeter (8)						
CITY OF SUGAR CITY	1003872	Flowmeter (1)	A0015819					
FREMONT COUNTY	200609	Unused (6)	A0006126					
GOLDEN VALLEY DEVELOPMENTS	1003349	Flowmeter (8)			49.40000153	49.40000153	55.88999939	3.9100000086
GOLDEN VALLEY DEVELOPMENTS	1003350	Flowmeter (8)			0	0	0	21.680000031
GOLDEN VALLEY DEVELOPMENTS	1002992	Flowmeter (1)	A0012450		37.79999924	37.79999924	8.569999695	26.5
HEISE HOT SPRINGS INC	1002992	Flowmeter (1)	A0012450		37.79999924	37.79999924	8.569999695	26.5
TETON PIPELINE ASSN INC	1002406	Flowmeter (1)	A0015004		0	0	0	150.14999939



**HENRY'S FORK GROUND WATER DISTRICT**

Ownername	WMISNumber	Meas Option	MetaTagNumber	2017 AF	2018 AF	2019 AF	2020 AF	2021 AF
LYLE J ROBRISON	200406	Unused (6)						
RHETT WATSON, WILLIAM NEIL TAYLOR	200453	Flowmeter (1)	A0009429	363.8	358.6	286.5	409.4	399.4
NATALIE J MOSS, CARL ETTER, ROBERT W BOYD, MATTHEW BEARD, DAVID	200454	Flowmeter (1)	A0007698	32.2	21.1	45.2	33.1	40.2
WAFFER, BARBARA E HITZ, PHYLLIS C WILLIAMS, THOMAS WILLIAMS	200461	Flowmeter (1)	A0008222	168.8	71.3	89.5	85.7	144.7
WATSON INVESTMENTS LLC	200462	Flowmeter (1)	A0008221	482.0	121.8	206.0	286.0	253.9
WATSON INVESTMENTS LLC	200470	Flowmeter (1)	A0007690	86.6	83.2	85.7	101.6	84.2
RICHARD F SMITH	200471	Flowmeter (8)	A0007689			18.4	18.4	18.4
REXBURG FACTORY LLC	200475	Alternate (3)	A0013627	27.5	27.5	27.5	27.5	42.7
HILLVIEW WATER USERS ASSN	200477	Flowmeter (1)	A0008735	33.9	36.3	2.8	4.3	1.8
BOYD E SMITH	200479	Flowmeter (1)	A0007694, A0015976	29.2	32.3	36.9	28.8	30.3
R MAX SNEDAKER	200480	PCC (2)	A0007686	366.5	435.4	320.4	381.6	188.8
WILLIAM L TANNER	200481	Flowmeter (1)	A0007685		230.0	230.0	230.0	198.3
JEFF L LERWILL, ALANA LERWILL	200503	Timeclock (7)	A0008460	2.0	0.0	15.4	11.3	7.1
WILCOX BROTHERS LLC, CITY OF REXBURG	200505	Flowmeter (1)	A0008463	129.4	163.4	229.3	203.9	176.0
DARIN STRBAL, TODD BUTKOFER, ROBERT HANSEN, CHANDLER GNETTING, ANDREW GRADY, CLAIR S HAWKINS TRUST, ERIKA C GONZALEZ	200507	Flowmeter (1)	A0008462	423.2	310.3	258.8	327.6	308.2
WILCOX BROTHERS LLC, DON MICKELSEN	200508	Flowmeter (1)	A0007696	160.8	248.2	182.4	196.3	196.8
DON MICKELSEN, WILCOX BROTHERS LLC	200509	Flowmeter (1)	A0008461		137.6	124.0	148.2	150.0
DON MICKELSEN, WILCOX BROTHERS LLC	200512	Flowmeter (1)	A0008455	232.9	80.8	124.3	142.2	174.0
JOHN ELDON LADLE, HOWARD JENSEN FARMS	200516	Flowmeter (1)	E0007515	232.9	454.1	257.3	237.7	273.1
JOSEPH J JENSEN	200521	Flowmeter (8)	E0007499	62.0	63.1	82.7	75.5	
SUN GLO INDUSTRIES	200526	Flowmeter (1)	A0008453	174.1	208.5	337.9	359.8	342.3
DOUGLAS K SAKOTA	200528	Flowmeter (8)	A0005666		89.4	89.4	89.4	95.2
WALTERS READY MIX INC	200601	Unused (6)	A0006119	240.7	189.9	192.4	262.5	236.7
CHARLOTTE PARKER	200602	Flowmeter (1)	A0006125	355.9	364.0	395.9	293.1	416.3
PATRICIA MILLER	200603	Flowmeter (1)	A0006124	45.5	32.8	33.0	25.1	49.5
DUSTY HILLS LLC	200604	Flowmeter (1)	A0006123	172.9	240.1	136.1	171.7	216.5
BOYD YANCEY, NATHAN HARAMES, BIG SANDS LLC	200605	Flowmeter (1)	A0008386	218.6	269.4	145.8	159.6	186.5
DI&J FARMS AN IDAHO GENERAL PARTNERSHIP	200607	Flowmeter (1)	E0007017		56.9	32.5	83.8	63.7
IDAHO DEPT OF JUVENILE CORRECTIONS	200610	Flowmeter (1)	A0006127	33.7	19.5	24.0	27.6	28.3
JAY RONALD PETERSON	200612	Flowmeter (1)	A0005674		411.4	411.4	411.4	0.0
W JEFFREY WALTERS	200623	Flowmeter (1)	A0005693	241.9	250.2	276.0	242.6	272.8
EGIN LAKES LLC	200624	Flowmeter (1)	A0005689	201.6	235.3	225.8	280.4	257.0
EGIN LAKES LLC	200625	Flowmeter (1)	A0008798	334.8	243.0	332.5	319.1	403.2
EGIN LAKES LLC	200626	Flowmeter (1)	A0005695	239.5	150.6	199.1	193.6	253.2
GMC FARMS INC	200627	Flowmeter (1)	A0008770	280.1	306.6	342.0	229.6	393.3
BKC FARMS INC	200628	Flowmeter (1)	A0005696	289.2	292.1	322.3	365.9	321.5
GMC FARMS INC	200629	Flowmeter (1)	A0005698	198.1	158.1	220.3	171.4	260.5
GMC FARMS INC	200630	Flowmeter (1)	A0005699	211.1	283.4	269.9	349.5	290.9
MELVIN HARRIS	200632	Flowmeter (1)	A0007727	101.2	108.6	89.1	100.0	91.1

UNIT 1 LLC,UNIT 2 LLC,JUNIPER VIEW LLC	2006331	Flowmeter (1)	A0008383	607.5	535.3	511.3	589.2	687.3	
UNIT 2 LLC,UNIT 1 LLC,JUNIPER VIEW LLC	200634	Flowmeter (1)	A0008660	372.6	1169.9	438.3	314.6	468.1	
S LYNN LOOSLI,PORTIA R LOOSLI	200635	Flowmeter (1)	A0005684	810.6	790.0	869.0	862.5	756.0	
BKC FARMS INC	200636	Flowmeter (1)	A0005691	286.6	219.9	198.6	254.2	165.9	
TRAVIS RIGBY	200638	Unused (4)	A0005692						
THOMAS GARLOCK	200641	Unused (6)	A0007722						
FALL RIVER SPRINGS LLC	200642	Flowmeter (1)	A0007723	100.3	161.1	208.4	159.6	241.4	
MELVIN HARRIS INC	200652	Flowmeter (1)	A0007726	381.5	368.3	283.3	285.5	390.6	
BYU IDAHO,JOSEPH J JENSEN	200654	Flowmeter (1)	A0008458	331.8	456.5	473.4	548.8	502.6	
DICKINSON FROZEN FOODS	200691	Flowmeter (1)	D0011099	192.5	203.3	238.6	242.5	236.3	
W JEFFREY WALTERS,DYLE B PETERSON	200696	Unused (6)	A0005686						
CITY OF ST ANTHONY	200729	Flowmeter (1)	E0007018		788.0	788.1	835.7	828.2	
CITY OF ST ANTHONY	200730	Flowmeter (1)	A0007725	685.7	608.3	547.7	637.4	602.1	
JAY RONALD PETERSON	200902	Flowmeter (1)	A0006128	18.9	14.2	16.1	17.6	20.8	
JUNIPER VIEW LLC,UNIT 1 LLC,UNIT 2 LLC	200906	Flowmeter (1)	A0008767	234.7	184.0	195.4	241.5	219.8	
JUNIPER VIEW LLC,UNIT 1 LLC,UNIT 2 LLC	200907	PCC (2)	A0008385	214.1	250.1	200.5	174.1	264.7	
FREMONT MADISON IRRIGATION DISTRICT	1001351	Flowmeter (1)	A0015975		0.0	0.0	0.0	408.4	
HARD WAY LP,JOYCE RANDKLEV	1001814	Unused (6)	A0015977						
FROM/MOVER 9 LLC,RGC FARMS LLC,JUNIPER VIEW LLC,UNIT 2 LLC,RIVERSIDE FARMS	1002940	Flowmeter (1)	A0015943	683.8	76.4	120.6	140.9	140.9	
FROM/MOVER 9 LLC,JUNIPER VIEW LLC,RGC FARMS LLC,UNIT 2 LLC,RIVERSIDE FARMS	1002941	Flowmeter (1)	A0019542	318.4	482.2	555.7	527.7	527.7	
RIVERSIDE FARMS,UNIT 2 LLC,JUNIPER VIEW LLC,RGC FARMS LLC,FROM/MOVER 9 LLC	1002943	Flowmeter (1)	A0015941	589.5	229.9	193.5	287.9	287.9	
FREMONT COUNTY DISTRICT 4 PARKER CEMETARY	1002944	Flowmeter (1)		30.8	69.3	32.0	16.3	16.3	
THE DEAN & SHIRENE SCHWENDIMAN FAMILY LTD PARTNERSHIP	1002986	Flowmeter (1)		3774.0	48.3	0.0	153.7	153.7	
JKC FARMS LLC,ROSE IRENE HANSEN,JGC FARMS LLC,JUNIPER VIEW LLC,JUDD CRAPO	1003019	Flowmeter (1)	A0015938	478.3	647.5	637.6	657.8	657.8	
RGC FARMS LLC,JKC FARMS LLC,JUDD CRAPO,JUNIPER VIEW LLC	1003021	Flowmeter (1)	A0015940	866.0	253.2	175.0	200.2	200.2	
LAVERE RICKS FARM LLC,RV RICKS FARMS LLC,MGR FARMS LLC	1003038	Flowmeter (1)	A0000255	562.8	219.3	226.7	206.8	206.8	
MELVIN SCHWENDIMAN,DONALD STAKER	1003073	Flowmeter (1)	A0015950	195.6	145.8	223.8	194.5	194.5	
DELLAH STAKER	1003074	Flowmeter (1)	A0015952	306.0	202.6	251.9	273.7	273.7	
CITY OF NEWDALE	1003076	Unused (6)	A0015973						
NEVA S LARSEN,PHILLIP BAKER	1003086	Flowmeter (1)	A0015985	680.0	296.6	154.6	112.3	112.3	
R LAYNE HARRIS	1003090	Flowmeter (1)	A0015979	254.0	158.2	104.0	95.3	95.3	
LITTLE FARMS	1003105	Flowmeter (1)	A0015987	1114.0	1114.0	134.5	165.6	165.6	
LITTLE FARMS	1003106	Flowmeter (1)	A0015988	470.0	470.0	507.0	470.2	470.2	
W JEFFREY WALTERS	1003109	Flowmeter (1)	A0015990	1416.6	667.8	734.0	681.4	681.4	
RANDALL B HILLMAN	1003113	Flowmeter (1)	A0016331	628.8	202.6	471.4	343.0	343.0	
C & O FARMS LLC	1003114	Flowmeter (1)	A0016329	572.0	322.3	373.5	369.3	369.3	
JANETTE REYNOLDS	1003115	Flowmeter (1)	A0016324	831.8	676.8	912.6	894.7	894.7	
JUNIPER VIEW LLC,JOHN R ZIRKER	1003118	Flowmeter (1)	A0016323	933.8	197.2	392.3	335.6	335.6	
RANDY HUGHES	1003120	Flowmeter (1)	A0016328	2690.0	161.8	127.1	199.8	199.8	
RANDY HUGHES	1003121	Unused (6)	A0016326		0.0				



**MADISON GROUND WATER DISTRICT**

OWNER	WMISNumber	Meas Option	NetatagNumb	2017 AF	2018 AF	2019 AF	2020 AF	2021 AF
BRANDI SUTTON,SHANE SUTTON	200407	Flowmeter (1)	A0008697	462.2000122	337.1199951	339.5	395.3299866	341.1700134
KYLE BYBEE	200408	Flowmeter (1)	A0008370	112.2300034	0.889999986	220.8999939	0	0
GWEN A SUTTON	200409	Flowmeter (1)	A0020283		629.7999878	885.2000122	485.0499878	921.7000122
NEDS MOODY CREEK PRODUCE	200520	Flowmeter (8)	E0007512	4.949999809	3.519999981	6.96999979	3.559999943	0
SUE R HUSKINSON,ROBERT D HUSKINSON	200522	Flowmeter (1)	A0008468		241.6799927	166.8999939	269.7399902	213.0399933
D S & S INC,JOHN H SMITH & SONS INC	200529	Flowmeter (1)	A0008464	258.2999878	214.3099976	234.5200043	264.8800049	206.4499969
RANDY HUSKINSON FAMILY LTD PARTNERSHIP	200531	Flowmeter (1)	A0008466	152.6900024	112	377.6099854	327.0499878	186.2400055
D S & S INC,JOHN H SMITH & SONS INC	200532	Flowmeter (1)	A0008754	797.1500244	665	712.9199829	660.5800171	660.8900146
CITY OF REXBURG,BYU IDAHO	200533	Flowmeter (8)	A0005645		1420.560059	1779.560059	1482.369995	24.8199969
TETON NEWDALE CEMETERY DISTRICT	200535	Flowmeter (1)	A0008448	19.20000076	17.36000061	16.62999916	27.45999908	122.7900009
BYU IDAHO	200694	Flowmeter (1)	A0008775		155.0200043	156.1000061	164.9400024	
GUY A ERIKSON,BRIGHAM YOUNG UNIVERSITY IDAHO	1002953	Flowmeter (1)	A0015818		230.2100067	230.2200012	96.18000031	154.9299927
LANE ARNOLD	1002955	Flowmeter (1)	A0015959		3300.100098	3709.699951	2921.399902	2963.5
CATHERINE H ROMAN,WILCOX BROTHERS LLC	1002972	Flowmeter (1)	A0016562		1035	522.3400269	697.0200195	377.980011
DAVID V SCHWENDIMAN	1002973	Flowmeter (1)	A0016580		2253.800049	644.6099854	614.789978	426.1000061
D S & S INC,DANNY SUMMERS	1002978	Flowmeter (1)	A0012235		251.0299988	405.7999878	151.8200073	407.3999939
DIANE P SCHWENDIMAN	1002983	Unused (6)		0				
DIANE P SCHWENDIMAN	1002985	Flowmeter (1)	A0012078		1137.5	597.2999878	889.6400146	719.1099854
DIANE P SCHWENDIMAN DAVID V SCHWENDIMAN, VAL E SCHWENDIMAN	1002987	Flowmeter (1)	A0002320		1158.199951	539.0800171	764.4099731	659.1400146
DAVID V SCHWENDIMAN, VAL E SCHWENDIMAN, DIANE P SCHWENDIMAN	1002988	Flowmeter (1)	A0012100		4339.200195	560.9500122	668.8599854	609.6199951
DIANE P SCHWENDIMAN	1002989	Unused (6)		0				
SALLY SMITH	1002993	Unused (6)	A0013606					
GARTH SUTTON FARMS INC,JOLENE SUTTON,GARTH SUTTON	1002994	Flowmeter (1)	A0016564		1450	1450	648.6300049	734.4400024
HARD WAY LP	1002995	Flowmeter (1)	A0015968		490	243.6399994	247.8200073	278.269989
ROSS T PARKINSON,PARKINSON FARMS INC	1002997	Flowmeter (1)	A0016577		1744	993.7800293	1133.150024	1078.670044
DIANE P SCHWENDIMAN	1002998	Unused (6)						
HARD WAY LP	1002999	Flowmeter (1)	A0016574		658	394.0499878	437.2999878	570.4500122
WILCOX BROTHERS LLC	1003000	Flowmeter (1)	A0016575		2178.300049	2210.800049	3231.5	2343.300049
JOHN H SMITH	1003001	Flowmeter (1)	A0016563		1185.400024	1042.5	503.7200012	482.3200073
RICHARD F SMITH	1003002	Flowmeter (1)	A0015901		2228	737.9099731	688.5900269	804.7800293
RICHARD F SMITH	1003003	Flowmeter (1)	A0000300			271.269989	446.9599915	414.9299927
JEWEL N HANSEN	1003004	Flowmeter (1)	A0015924		452	452	452	452
RICHARD F SMITH	1003005	Flowmeter (1)	A0002318		410	212.9199982	159.2299957	227.4400024
ASHTON FARMS LLC	1003006	Flowmeter (1)	A0016549		790.2000122	159.1900024	427.75	417.1799927
LARID DEE ROBINSON,KATHRYN ROBINSON	1003007	Flowmeter (1)	A0015922		1822	380.7399902	398.1000061	647.5599976
ASHTON FARMS LLC	1003008	Flowmeter (1)	A0016555		933	612.3099976	712.9299927	736.1300049
LAVERE RICKS FARM LLC	1003009	Flowmeter (1)	A0000254		290	240.6600037	247.2400055	202.3899994

UNIT 1 LLC,CKC FARMS LLC,NORTHWEST FARM CREDIT SERVICES PCA CRAPO AG LLC,JKC FARMS LLC,RGC FARMS LLC	1003010	Flowmeter (1)	A0015926		7571.399902	217.3099976	276.9200134	286.549878
JUNIPER VIEW LLC,UNIT 2 LLC,CKC FARMS LLC,STATE OF IDAHO,UNIT 1 LLC,UNIT 8 FARMS LLC,FROMOVER 9 LLC	1003011	Flowmeter (1)	A0016557		6474	918.2399902	938.3599854	841.9099731
UNIT 2 LLC,JUNIPER VIEW LLC,UNIT 8 FARMS LLC,UNIT 1 LLC,CKC FARMS LLC,STATE OF IDAHO,FROMOVER 9 LLC	1003012	Flowmeter (1)	A0015919		298.1000061	465.1000061	529.9500122	330.9500122
FROMOVER 9 LLC,STATE OF IDAHO,UNIT 1 LLC,CKC FARMS LLC,UNIT 2 LLC,JUNIPER VIEW LLC,UNIT 8 FARMS LLC	1003013	Flowmeter (1)	A0020703		0	41.34000015	6.03000021	0
UNIT 1 LLC,FROMOVER 9 LLC,STATE OF IDAHO,UNIT 8 FARMS LLC,JUNIPER VIEW LLC,UNIT 2 LLC,CKC FARMS LLC	1003014	Flowmeter (1)	A0015917		335.6000061	330.1700134	376.3299866	383.2999878
FROMOVER 9 LLC,UNIT 1 LLC,CKC FARMS LLC,UNIT 2 LLC,JUNIPER VIEW LLC,UNIT 8 FARMS LLC,STATE OF IDAHO	1003015	Flowmeter (1)	A0002317		438.6000061	453.3500061	510.3299866	472.2799988
WARD & SONS FAMILY LTD PARTNERSHIP	1003016	Flowmeter (1)	A0000299		538.4000244	224.1799927	233.3999939	252.6000061
ARLENCO INC	1003017	Flowmeter (1)	A0000272		368.9400024	390.2999878	461.9100037	377.1900024
R & D GOULD FARMS LLC,RTG FARMS LLC	1003018	Flowmeter (1)	A0015948		941	530.5999756	539.7399902	528.5200195
ROBERT D HUSKINSON,RANDY HUSKINSON,R & B INC	1003020	Flowmeter (1)	A0015949		1334.400024	352.8399963	281.6700134	333.9899902
GRANT H RICKS,BRBF FARM LLC,MGR FARMS LLC	1003025	Flowmeter (1)	A0000274		294	93.70999908	50.04000092	87.26999664
MGR FARMS LLC,RV RICKS FARMS LLC	1003026	Flowmeter (1)	A0000261		826	371.6700134	361.1600037	367.3500061
GALE W HARDING,BLAINE SMITH	1003027	Flowmeter (1)	A0000276		80	47.18999863	44.61999893	38.09999847
GUY A ERIKSON	1003028	Flowmeter (1)	A0016576		711.7700195	415.5799866	416.0899963	338.2999878
WILCOX BROTHERS LLC	1003029	Flowmeter (1)	A0000280		3711.399902	2594.100098	3165.300049	3665
W R HOLDINGS	1003030	Flowmeter (1)	A0000283		1429	477.480011	586.1300049	606.2299805
W R HOLDINGS	1003031	Flowmeter (1)	A0000288		153.6999969	243.5299988	216.2700043	267.8299866
SUMNERCO MANAGEMENT INC	1003032	Flowmeter (1)	A0012244		699.7999878	478.269989	438.3200073	659.2800293
RICHARD F SMITH	1003033	Flowmeter (1)	A0000300					
FRANK SUMMERS INC	1003034	Flowmeter (1)	A0000271	5.730000019	459.9299927	514.1900024	552.7299805	651.75
GUY A ERIKSON	1003035	Flowmeter (1)	A0021198	1250		585.8900146	650.8499756	654.1699829
CIRCLE P FARMS LLC	1003036	Flowmeter (1)	A0015954		894.2000122	482.4500122	479.8999939	517.8200073
BMJ FARMS LLC	1003037	Flowmeter (1)	A0016551	499.6900024	495.0599976	508.3399963	503.5299988	527.1500244
STEPHEN COOK,GRANT H RICKS,NANCY COOK	1003039	Flowmeter (1)		1412		351.6600037	643.3900146	111.9300003
MGR FARMS LLC	1003040	Flowmeter (1)	A0000279	634		314.0599976	329.7999878	336.0599976
JOSEPH JEPPESEN,DALE JEPPESEN	1003041	Flowmeter (1)	A0000262		767.5999756	752.6900024	796.2000122	811.2999878
LORI SUTTON,STANLEY SUTTON	1003042	Flowmeter (1)	A0000252		488	416.4899902	411.2000122	529.9699707
R & D GOULD FARMS LLC	1003043	Flowmeter (1)	A0000298		667	372.480011	463.0899963	350.4400024
KIRKLAND FARM LLC	1003044	Flowmeter (1)	A0000297		820	482.6499939	454.6300049	501.6000061
LORI SUTTON,STANLEY SUTTON	1003045	Flowmeter (1)	A0000251		365.5	700.9799805	765.9899902	674.0300293

B & B FARMS	1003046	Flowmeter (1)	A0012084		280.600061	159.759945	155.929927	128.839963
MGR FARMS LLC	1003047	Flowmeter (1)	A0000275		398	137.580018	148.429927	145.490055
SETH WOOD FARMS INC	1003048	Flowmeter (1)	A0015962		316	127.410037	168.279988	150.279988
ARDEN R STEWART	1003049	Flowmeter (1)	A0015961		181.429927	174.119951	169.029988	166.070073
LAVERE RICKS FARM LLC	1003050	Flowmeter (1)	A0000253		474	209.449969	242.789933	298.010098
RAY R POCOCK	1003051	Flowmeter (1)	A0015903		344.160037	150.179927	316.089963	397.480011
RAY R POCOCK	1003052	Flowmeter (1)	A0015904		928	330.649939	198.429927	227.839963
TRS FARMS	1003053	Flowmeter (1)	A0000247		2576.399902	135.630049	58.9099985	1302.849976
TRS FARMS	1003054	Flowmeter (1)	A000245		410.7999878	367.269989	192.539933	289.5499878
TRS FARMS	1003055	Flowmeter (1)	A0016570		492.2000122	548.6099854	571.1500244	514.1599731
THE RALPH R & BETH POCOCK FAMILY LTD PARTNERSHIP	1003056	Flowmeter (1)	A0016554		200.5899963	130.2700043	262.269989	416.3299866
RAY R POCOCK,THE RALPH R & BETH POCOCK FAMILY LTD PARTNERSHIP	1003057	Flowmeter (1)	A0002313		1183.400024	293.399939	528.5800171	592.289978
WEBSTERS MILE HIGH FARM INC	1003058	Flowmeter (1)	A0000248	501.1300049	501.1300049	528.4500122	579.1900024	414.1900024
SETH WOOD FARMS INC	1003059	Flowmeter (1)	A0000294		390.1000061	448.1199951	450.2900085	439.25
SETH WOOD FARMS INC	1003060	Flowmeter (1)	A0000295		769.5	642.9400024	641.2000122	859.2999878
KEVIN B WEBSTER	1003061	Flowmeter (1)	A0000289		353.8699951	125.5400009	151.4400024	288.6000061
KEVIN B WEBSTER,JANET WEBSTER,WEBSTERS INC,SHAWN WEBSTER	1003062	Flowmeter (1)	A0000249		1735.219971	959.2199707	1029.689941	900
R & B INC,RANDY HUSKINSON,ROBERT D HUSKINSON	1003063	Flowmeter (1)	A0016559		184.8899994	432.3999939	521.1099854	468.8999939
FLYING H CORP	1003064	Flowmeter (1)	A0015963		261.3999939	178.25	190.8500061	128.6000061
MYRON LEWIS FARMS	1003065	Flowmeter (1)	A0000260	467.9899902	480.6099854	457.6499939	588.9000244	437.1499939
T L R INC	1003066	Flowmeter (1)	A0000278		727.5599976	591.1300049	643.9299927	731
WILCOX BROTHERS LLC,FLOYD WILCOX & SONS INC	1003067	Flowmeter (1)	A0016566		465.1199951	455.3699951	553.5	462.8999939
WILCOX BROTHERS LLC,FLOYD WILCOX & SONS INC	1003068	Flowmeter (1)	A0016567		645.3400269	550.710022	678.710022	649.3300171
FLOYD WILCOX & SONS INC,WILCOX BROTHERS LLC	1003069	Flowmeter (1)	A0016568		414.3200073	453.75	500.4899902	511.2900085
TED ERIKSON	1003071	Flowmeter (1)	A0021200		122	206.6300049	181.4700012	159.6900024
GRANT H RICKS,MGR FARMS LLC	1003072	Flowmeter (1)	A0000273		99.19999695	81.25	106.3000031	98.5
INC	1003075	Flowmeter (1)	A0016550		966.7999878	1041	1183.01001	660.789978
FRANKO FARMS INC	1003077	Flowmeter (1)	A0016573		3786	795.4199829	569.1900024	207.8600006
FRANKO FARMS INC	1003078	Flowmeter (1)	A0021102		624.5	667.9299927	742.289978	761.9000244
FRANKO FARMS INC	1003079	Flowmeter (1)	A0000258		531.4000244	376.8599854	462.8500061	532.6900024
HOWARD JENSEN FARMS,HOWARD JENSEN FAMILY PARTNERSHIP	1003081	Flowmeter (1)	A0012239		1806	1491.219971	598.5700073	512.6900024
SETH WOOD FARMS INC	1003082	Flowmeter (1)	A0016579		266.1000061	308.3999939	305.7799988	273.9100037
RGC FARMS LLC,CKC FARMS LLC,NORTHWEST FARM CREDIT SERVICES PCA,CRAPO AG	1003083	Flowmeter (1)	A0015927		992.2000122	1051.689941	1075.160034	1055.300049
LLC,JKC FARMS LLC,UNIT 1 LLC								



DAVID V SCHWENDIMAN, DIANE P SCHWENDIMAN	1003085	Flowmeter (1)	A0015983				125.6399994	228.3099976	256.6099854
BAKER FARMS INC	1003087	Flowmeter (1)	A0015982		422.6600037	509.3299866	513.1799927	493.2600098	
BROWN INC	1003088	Flowmeter (1)	A0015907		674.6599731	568.9799805	711.1099854	766.7800293	
BAKER FARMS INC, THOMAS K BAKER	1003089	Flowmeter (1)	A0015981		432	184.5500031	171.1499939	195.1199951	
R & S WEBSTER ENTERPRISES LLC	1003091	Flowmeter (1)	A0016569		590	565.6900024	539.960022	408.8099976	
LEE H SUTTON, RANDALL D SUTTON, KENT V SUTTON	1003092	Flowmeter (1)	A0021197		1556	15	9.659999847	572.0300293	
WAHOO INC	1003093	Flowmeter (1)	A0015995		612	2.220000029	8.340000153	30.28000069	
NATHAN ASHCRAFT, BHA INC	1003094	Flowmeter (1)	A0015989		345.7000122	227.4900055	148.9400024	343.9700012	
NATHAN ASHCRAFT, BHA INC	1003095	Flowmeter (1)	A0015994		238	190.8200073	220.8000031	224.5599976	
VALLEY VIEW RANCH	1003096	Flowmeter (1)	A0018251		1267	1267	906.4000244	270.9100037	
THE WALTERS FAMILY LTD PARTNERSHIP, MONA WALTERS	1003097	Flowmeter (1)	A0015991		1908	399.8699951	363.9400024	368.9299927	
REESE J GODFREY	1003098	Flowmeter (1)	A0012088		340	218.3699951	234.6300049	253.8500061	
LAYNE HARRIS, R LAYNE HARRIS	1003099	Flowmeter (1)	A0015978		464	2.859999895	0.829999983	2.240000001	
VAL E SCHWENDIMAN	1003100	Flowmeter (1)	A0015998		604	241.6199951	208.2700043	221.7299957	
NORVUE FARMS GENERAL PARTNERSHIP	1003101	Flowmeter (1)	A0015992		496	195.3399963	231.0099945	256.0299988	
W JEFFREY WALTERS	1003102	Flowmeter (1)	A0016572		622	389.3299866	298.7600098	282.5499878	
THE WALTERS FAMILY LTD PARTNERSHIP, MONA WALTERS	1003103	Flowmeter (1)	A0015930			631.8099976	650.4099731	695.7399902	
LARID DEE ROBINSON, KATHRYN ROBINSON	1003104	Flowmeter (1)	A0016571		225.5	440.3800049	492.8399963	336.7099915	
SUMMERS FARM & RANCH INC	1003107	Flowmeter (1)	A0016320		1650	803.0300293	971.1799927	772.2000122	
SUMMERC O MANAGEMENT INC	1003108	Flowmeter (1)	A0016317		1312.109985	1448.199951	1684.839966	902.5599976	
SUMMERS FARM & RANCH INC	1003110	Flowmeter (1)	A0016316		109.1999969	966	905	1015.900024	
SUMMERS FARM & RANCH INC	1003111	Flowmeter (1)	A0016315		626.8200073	774.0100098	835.0499878	724.0700073	
WILCOX BROTHERS LLC	1003112	Flowmeter (1)	A0016322		783.5200195	508.4500122	699.6799927	580.8800049	
ROBERT SCOTT WOOD	1003116	Flowmeter (1)	A0016332		916	399.2399902	467.769989	467.769989	
3B LLC	1003117	Flowmeter (1)	A0012082		61.36999893	110.3399963	106.0400009	105.9400024	
KEVIN B WEBSTER, SHAWN WEBSTER	1003119	Flowmeter (1)	A0000250		2022.800049	2130.899902	1095.810059	1035.599976	
DAVID V SCHWENDIMAN	1003124	Flowmeter (1)	A0000292		904.1400146	423.480011	772.8699951	787.210022	
SHAWN WEBSTER	1003125	Flowmeter (1)	A0000290		699.7999878	185.4100037	844.1599731	949.6500244	
FRANK SUMMERS INC	1003130	Flowmeter (1)	A0012241		2175.199951	2175.199951	1361.459961	789.2299805	
FRANK SUMMERS INC	1003131	Flowmeter (1)	A0016552		0	0	138.9799957	611.0499878	
MERLE K JEPPESEN, BEVAN JEPPESEN	1003133	Flowmeter (1)	A0016551		1829.800049	93.01000214	833.7199707	816.0800171	
VALLEY VIEW RANCH	1003135	Flowmeter (1)	A0018207		0	0	0	13.57999992	
VALLEY VIEW RANCH	1003136	Flowmeter (1)	A0015814		0	0	0	26.20999908	
UNIT 1 LLC, FROMOVER 9 LLC, STATE OF IDAHO, UNIT 8 FARMS LLC, JUNIPER VIEW LLC, UNIT 2 LLC, CKC FARMS LLC	1003139	Unused (6)	A0016556		0	0	0	0	
DIANE P SCHWENDIMAN	1003145	Flowmeter (1)	A0016553		2738.100098	2970.219971	4156.149902	3778.399902	
DIANE P SCHWENDIMAN	1003147	Unused (6)	A0012091		0	0	0	0	



RECEIVED

FEB 11 2022

Department of Water Resources  
Eastern Region

WATER DISTRICT 100

Water Right Owner	Water Right	WMISNumber	5YR AVERAGE AF	AF \$\$	Diversion \$\$	Total \$\$
ARTCO INC	22-7473	200524	122.6	\$15.93	\$40	\$55.93
BASIC AMERICAN INC	22-2204 , 22-7391	200527	877.1	\$114.03	\$40	\$154.03
BASIC AMERICAN INC	22-13806 , 22-13807	200611	0.0	\$0.00	\$40	\$40.00
BASIC AMERICAN INC	22-11443	200647	0.0	\$0.00	\$40	\$40.00
BASIC AMERICAN INC	22-2204 , 22-7391	200680	0.0	\$0.00	\$40	\$40.00
BASIC AMERICAN INC	22-7391 , 22-2204	200754	286.6	\$37.26	\$40	\$77.26
CITY OF REXBURG	22-13790 , 22-7617 , 22-7754 , 22-7074 , 22-7175 , 22-7176 , 22-13888	200511	468.0	\$60.84	\$40	\$100.84
CITY OF REXBURG	22-7074 , 22-7175 , 22-7176 , 22-7617 , 22-7754 , 22-13790 , 22-13888	200525	800.7	\$104.09	\$40	\$144.09
CITY OF REXBURG	22-7176 , 22-7175 , 22-7074 , 22-7754 , 22-7617 , 22-13790 , 22-13888	200711	1151.3	\$149.67	\$40	\$189.67
CITY OF REXBURG	22-7074 , 22-7175 , 22-7176 , 22-7754 , 22-13790	200712	0.0	\$0.00	\$40	\$40.00
CITY OF REXBURG	22-7074 , 22-7175 , 22-7176 , 22-7754 , 22-13790 , 22-13888	200713	248.6	\$32.32	\$40	\$72.32
CITY OF REXBURG	22-7074 , 22-7175 , 22-7176 , 22-7617 , 22-7754 , 22-13790 , 22-13888	200714	1303.5	\$169.46	\$40	\$209.46
CITY OF REXBURG	22-13130 , 22-13888	1000638	19.4	\$2.52	\$40	\$42.52
CITY OF REXBURG	22-7074 , 22-13790 , 22-7754 , 22-7617 , 22-7176 , 22-7175 , 22-13888	1002939	223.0	\$28.99	\$40	\$68.99
CITY OF REXBURG	22-7074 , 22-7175 , 22-7176 , 22-7617 , 22-7754 , 22-13790	1003140	956.0	\$124.28	\$40	\$164.28
CITY OF REXBURG	22-13790 , 22-7754 , 22-7617 , 22-7176 , 22-7175 , 22-7074 , 22-13888	1003141	830.9	\$108.02	\$40	\$148.02
CITY OF REXBURG	22-13131	1003174	86.6	\$11.26	\$40	\$51.26
CITY OF REXBURG	22-7571	1003176	62.7	\$8.15	\$40	\$48.15
CITY OF REXBURG	22-13888	1003907	0.0	\$0.00	\$40	\$40.00
CITY OF SUGAR CITY	22-7662 , 22-7153 , 22-4009 , 22-14304	101642	208.7	\$27.13	\$40	\$67.13
CITY OF SUGAR CITY	22-14304 , 22-4009 , 22-7153 , 22-7662	101643	30.3	\$3.94	\$40	\$43.94
CITY OF SUGAR CITY	22-7662 , 22-7153 , 22-4009 , 22-14304	101644	114.4	\$14.87	\$40	\$54.87
CITY OF SUGAR CITY	22-7662 , 22-7153 , 22-4009 , 22-14304	1003202	0.0	\$0.00	\$40	\$40.00
CITY OF SUGAR CITY	22-14304 , 22-7153 , 22-7662 , 22-4009	1003291	0.0	\$0.00	\$40	\$40.00
CITY OF SUGAR CITY	22-7662 , 22-4009 , 22-7153 , 22-14304	1003872	0.0	\$0.00	\$40	\$40.00
EDMUND WILLMS	22-7024	1002949	0.0	\$0.00	\$120	\$120.00
FREMONT COUNTY	22-7298	200609	0.0	\$0.00	\$40	\$40.00
GALE W HARDING	22-7568	200534	0.0	\$0.00	\$40	\$40.00
GOLDEN VALLEY DEVELOPMENTS	22-7805	1003349	39.7	\$5.15	\$40	\$45.15
GOLDEN VALLEY DEVELOPMENTS	22-7805	1003350	5.4	\$0.70	\$40	\$40.70
HEISE HOT SPRINGS INC	23-7016	1002992	27.7	\$3.60	\$40	\$43.60
NELSON RICKS CREAMERY CO	22-7107	200747		\$0.00	\$40	\$40.00
ROY J MC GARRY, THERON R MC GARRY	22-10877 , 22-4150	200473		\$0.00	\$40	\$40.00
SHIRLEY SQUIRES	22-4064	1003070		\$0.00	\$40	\$40.00
TETON PIPELINE ASSN INC	22-7188	1002406	37.5	\$4.88	\$40	\$44.88
WILLIAM B KLINGLER	22-13207	1002948		\$0.00	\$40	\$40.00
			<b>AF TOTAL</b>	<b>AF \$\$</b>	<b>Diversion \$\$</b>	<b>TOTAL \$\$</b>
			7900.7	\$1,027.09	\$1,520	\$2,547.09

Water Right	NAME ON WATER RIGHT	Diversions	Minimum Charge	Total Assessment
23-11476	7N RANCH	1	\$40	\$40.00
22-7549	ARCHIBALD, GARY AND PATRICIA	1	\$40	\$40.00
22-7555	ARD, BRUCE	1	\$40	\$40.00
22-7423	ARLENCO INC	1	\$40	\$40.00
22-11451	BAH REXBURG AC PROPERTIES LLC (The Cove)	1	\$40	\$40.00
22-7761	BAKER FARMS INC	1	\$40	\$40.00
22-7464	BERRY PROPERTIES (PREVIOUSLY BOWEN PETROLEUM)	1	\$40	\$40.00
22-7594	BETTENHAUSEN IDAHO LLC (Water right owner Gladys Randall)	1	\$40	\$40.00
22-7067	BROWN INC	1	\$40	\$40.00
23-11371	COVERED BRIDGE LLC	1	\$40	\$40.00
22-7577	CRYSTAL POND ANGLERS ASSN INC	3	\$40	\$120.00
22-10395	DAVENPORT KENDALL E	1	\$40	\$40.00
22-7372	DE ANN B AND WRIGHT R NOEL (Property Owner Keith and Patricia Cutler)	1	\$40	\$40.00
22-7322, 22-13523	DP BECK (PREVIOUSLY MADISON SCHOOL DISTRICT # 321)	1	\$40	\$40.00
22-7605	DUEFY & CONNIE ENTERPRISES LLC	1	\$40	\$40.00
22-7633	FALL RIVER REAL ESTATE HOLDINGS LLC (Armstrong, Jeremy)	1	\$40	\$40.00
21-7385	FERGUSON ROGER N	1	\$40	\$40.00
22-7598	FLYING H CORP	1	\$40	\$40.00
22-7541	MGR FARMS LLC /GRANT H RICKS	1	\$40	\$40.00
22-7544	MGR FARMS LLC /GRANT H RICKS	1	\$40	\$40.00
22-7520	HELENA CHEMICAL CO.	1	\$40	\$40.00
22-13913	HENDRICKS, TERRY (SUMMIT LAND HOLDINGS LLC, NEW PROPERTY OWNER)	1	\$40	\$40.00
22-7584	HILL, BRENT, LLOYD, LINDA, PERKES, ROBERT R	3	\$40	\$120.00
22-7764	HOPE, DENNIS K	2	\$40	\$80.00
22-11197	IDAHO DEPARTMENT OF TRANSPORTATION	1	\$40	\$40.00
22-7751	JACK E KOON	1	\$40	\$40.00
22-7453	JAMES R THOMPSON	1	\$40	\$40.00
22-7656	JOYCE AND VAN W BRIGGS (Deelane Maupin Property Owner)	1	\$40	\$40.00
22-7556	KEVIN B WEBSTER	1	\$40	\$40.00
22-7580	KIRK WEBSTER	1	\$40	\$40.00
22-7296	KIT CIRCLE, LLC	1	\$40	\$40.00
22-7540	LANCE TURMAN (PREVIOUSLY STEWART, DORIS & CLYDE)	1	\$40	\$40.00
22-7558	LEISHMAN ELECTRIC	1	\$40	\$40.00
22-14031	MICKELSEN PROPERTIES LLC ( PREV. OWNER M & B ENTERPRISES LTD PARTNERSHIP )	1	\$40	\$40.00
22-10170	MEADOW LARK COURT LLC	1	\$40	\$40.00
22-11385	MERLA NELSON	1	\$40	\$40.00
21-7563	TERRY AND KATHY BEEMER (Preveously Ron Frame)	1	\$40	\$40.00
22-14350	MISTY VALLEY LLC	1	\$40	\$40.00
21-7428	WEST CEDAR HOLDINGS LLC (MOUNTAIN VIEW COURT LLC)	1	\$40	\$40.00
22-7573	MOUNTAIN WEST BARK PRODUCTS INC	1	\$40	\$40.00
22-7539	NORVUE FARMS GENERAL PARTNERSHIP	1	\$40	\$40.00
22-7599	R & D GOULD FARMS LLC	1	\$40	\$40.00
22-7557	TB & R INVESTMENTS ( PREV OWNERR RICKS BROTHERS)	1	\$40	\$40.00
21-7416	ROSEBOROUGH ZITA I	1	\$40	\$40.00
22-7293	TPC PINNACLE LLC ( PREV OWNER RUNHARD LLC)	1	\$40	\$40.00

22-10886	SAKOTA MABEL S	1	\$40	\$40.00
22-7578	SHAWN WEBSTER	1	\$40	\$40.00
22-7317	STATE OF IDAHO	1	\$40	\$40.00
22-7551	T R WEBSTER & SONS INC	1	\$40	\$40.00
21-7563	TERRILL LURKIN (Previously Ron Frame)	1	\$40	\$40.00
21-7419	TFT LLC	1	\$40	\$40.00
22-7626	THATCHER SUMMIT INC ( Me & 3C is current property owner)	1	\$40	\$40.00
22-7622	VALLEY WIDE COOPERATIVE	1	\$40	\$40.00
22-12520	WALTERS PRODUCE INC	1	\$40	\$40.00
22-7546	WALTERS, BARBARA & WARREN	1	\$40	\$40.00
22-7543	WESTOVER RANCH	1	\$40	\$40.00
22-11598	WINN, JAMES DALE	1	\$40	\$40.00
	TOTAL			\$2,480.00

**HENRY'S FORK GROUND WATER DISTRICT**

Water Right Owner	Water Rights	WMISNumber	AF	AF AVERAGE	AF \$\$	Diversion Fee	Total \$\$
BKC FARMS INC	21-7060 , 21-12957	200628		318.2	\$41.36	\$40.00	\$81.36
BKC FARMS INC	21-7007	200636		225.0	\$29.26	\$40.00	\$69.26
BLAIR R FISHER	WSB RENTAL RIGHTS 21-7089, 21-12952	200510		129.5	\$16.83	\$40.00	\$56.83
BOYD E SMITH	22-2270	200477		15.8	\$2.05	\$40.00	\$42.05
BOYD YANCEY NATHAN HARAWES BIG SANDS LLC	21-7376 , 21-13212 , 21-13255	200604		187.5	\$24.37	\$40.00	\$64.37
BYU IDAHO JOSEPH J JENSEN	22-2303B , 22-2303C , 22-10044	200654		462.6	\$60.14	\$40.00	\$100.14
C & O FARMS LLC	22-2293	1003114		409.3	\$53.21	\$40.00	\$93.21
CHARLOTTE PARKER	21-7089 , 21-12952	200601		224.5	\$29.18	\$40.00	\$69.18
CITY OF NEWDALE	22-2217 , 22-7269	1003076		0.0	\$0.00	\$40.00	\$40.00
CITY OF NEWDALE	22-2217 , 22-7269	1003137		0.4	\$0.05	\$40.00	\$40.05
CITY OF NEWDALE	22-2217 , 22-7269	1003138		152.8	\$19.86	\$40.00	\$59.86
CITY OF ST ANTHONY	21-2142 , 21-12994	200729		810.0	\$105.30	\$40.00	\$145.30
CITY OF ST ANTHONY	22-13438	200730		616.3	\$80.11	\$40.00	\$120.11
DARIN STIBAL TODD BUTIKOFER ROBERT HANSEN CHANDLER GNETTING ANDREW GRADY CLAIR S HAWKINS TRUST ERIKA C GONZALEZ	21-13140 , 21-13142 , 21-13164 , 21-13165 , 21-13101 , 21-13099 , 21-13282 , 21-13283 , 21-13284 , 21-13285 , 21-13131 , 21-13129 , 21-13136 , 21-13138	200505		180.4	\$23.45	\$40.00	\$63.45
DELLAH STAKER	22-2173B	1003074		256.6	\$33.61	\$40.00	\$73.61
DICKINSON FROZEN FOODS	22-13430	200691		222.6	\$28.94	\$40.00	\$68.94
DJ&J FARMS AN IDAHO GENERAL PARTNERSHIP	21-7173	200605		196.0	\$25.47	\$40.00	\$65.47
DON MICKELSEN WILCOX BROTHERS LLC	21-13083 , 21-13141 , 21-13216 , 21-13215 , 21-2166 , 21-13143	200508		196.9	\$25.60	\$40.00	\$65.60
DON MICKELSEN WILCOX BROTHERS LLC	21-13213 , 21-13214	200509		139.9	\$18.19	\$40.00	\$58.19
DON MICKELSEN WILCOX BROTHERS LLC	21-13143 , 21-13141 , 21-13083 , 21-2166 , 21-13215 , 21-13216 , 21-13214 , 21-13213	200526		284.5	\$36.99	\$40.00	\$76.99
DOUGLAS K SAKOTA	22-7225	200603		37.2	\$4.83	\$40.00	\$44.83
DUSTY HILLS LLC	21-7377	200623		256.7	\$33.37	\$40.00	\$73.37
EGIN LAKES LLC	21-7104 , 21-13132	200624		240.0	\$31.20	\$40.00	\$71.20
EGIN LAKES LLC	21-7194	200625		326.5	\$42.45	\$40.00	\$82.45
EGIN LAKES LLC	21-7033 , 21-10930	200626		207.2	\$26.94	\$40.00	\$66.94
EGIN LAKES LLC	21-7170	200642		174.2	\$22.64	\$40.00	\$62.64
FALL RIVER SPRINGS LLC	21-7152	1002944		37.1	\$4.82	\$40.00	\$44.82
FREMONT COUNTY DISTRICT 4 PARKER CEMETARY	21-12889	1001351		102.1	\$13.27	\$40.00	\$53.27
FREMONT MADISON IRRIGATION DISTRICT	21-13151	1003232		129.9	\$16.89	\$40.00	\$56.89
FREMONT MADISON IRRIGATION DISTRICT	21-13261	1003234		136.8	\$17.79	\$40.00	\$57.79
FREMONT MADISON IRRIGATION DISTRICT	22-13506	1003235		396.9	\$51.59	\$40.00	\$91.59
FREMONT MADISON IRRIGATION DISTRICT	21-13261	1002941		471.0	\$61.23	\$40.00	\$101.23
FROMOVER 9 LLC JUNIPER VIEW LLC UNIT 2	22-14216 , 22-14222 , 22-14223 , 22-14220 , 22-14221 , 22-2294 , 22-7057 , 22-14217 , 22-14218 , 22-14219 , 22-7648	1002940		255.4	\$33.20	\$40.00	\$73.20
FROMOVER 9 LLC RGC FARMS LLC JUNIPER VIEW LLC UNIT 2	22-14220 , 22-14219 , 22-14216 , 22-14218 , 22-14217 , 22-7057 , 22-2294 , 22-14223 , 22-14221 , 22-14222 , 22-7648	200627		310.3	\$40.34	\$40.00	\$80.34
GMC FARMS INC	21-7027	200629		201.7	\$26.22	\$40.00	\$66.22
GMC FARMS INC	21-7024 , 21-2122	200630		280.9	\$36.52	\$40.00	\$76.52
GMC FARMS INC	22-14166 , 22-7009	1001814		0.0	\$0.00	\$40.00	\$40.00
HARD WAY LP JOYCE RANDKLEV	22-7450	200475		30.5	\$3.97	\$40.00	\$43.97
HILLVIEW WATER USERS ASSN	22-7450	1003341		30.2	\$3.93	\$40.00	\$43.93
HILLVIEW WATER USERS ASSN	22-7450	200607		59.2	\$7.70	\$40.00	\$47.70
IDAHO DEPT OF JUVENILE CORRECTIONS	21-11971 , 21-11972	1003115		829.0	\$107.76	\$40.00	\$147.76
JANETTE REYNOLDS	22-7646 , 22-7031 , 22-12671	200610		26.6	\$3.46	\$40.00	\$43.46
JAY RONALD PETERSON	22-7474	200902		17.5	\$2.28	\$40.00	\$42.28
JAY RONALD PETERSON	22-7474	200481		222.1	\$28.87	\$40.00	\$68.87
JEFF L LERWILL ALANA LERWILL	22-2152 , 22-13456	1003019		605.3	\$78.69	\$40.00	\$118.69
JKC FARMS LLC ROSE IRENE HANSEN RGC FARMS LLC JUNIPER VIEW LLC JUDD CRAPO	22-7035 , 22-13602 , 22-7489 , 22-7207A , 22-7207B , 22-14198 , 22-14199 , 22-14201 , 22-14202 , 22-14203 , 22-14200 , 22-7649 , 22-14338 , 22-14339 , 22-14340	200512		150.8	\$19.61	\$40.00	\$59.61
JOHN ELDON LADLE HOWARD JENSEN FARMS	22-10543 , 22-7672						



JOSEPH J JENSEN	22-7198		200516	291.0	\$37.83		\$40.00	\$77.83
JUNIPER VIEW LLC,JOHN R ZIRKER	22-13019 , 22-7163		1003118	464.7	\$60.41		\$40.00	\$100.41
JUNIPER VIEW LLC,UNIT 1 LLC,UNIT 2 LLC	21-13206 , 21-7564 , 21-13205		200906	215.1	\$27.96		\$40.00	\$67.96
JUNIPER VIEW LLC,UNIT 1 LLC,UNIT 2 LLC	21-7046 , 21-7564 , 21-13205 , 21-13206 , 21-13201 , 21-13202		200907	220.7	\$28.69		\$40.00	\$68.69
LAVERE RICKS FARM LLC,RV RICKS FARMS LLC,MGR FARMS LLC	22-21788 , 22-13514 , 22-13515		1003038	303.9	\$39.51		\$40.00	\$79.51
LITTLE FARMS	22-12786 , 22-2150		1003105	632.0	\$82.16		\$40.00	\$122.16
LITTLE FARMS	22-7204		1003106	479.3	\$62.31		\$40.00	\$102.31
LYLE J ROBISON	22-2159		200406	0.0	\$0.00		\$40.00	\$40.00
MELVIN HARRIS	21-7452		200632	98.0	\$12.74		\$40.00	\$52.74
MELVIN HARRIS INC	21-7537 , 21-7536		200652	341.9	\$44.44		\$40.00	\$84.44
MELVIN SCHWENDIMAN,DONALD STAKER	22-2131 , 22-11070 , 22-7430		1003073	189.9	\$24.69		\$40.00	\$64.69
NATALIE J MOSS,CARL ETTER,ROBERT W BOYD,MATTHEW BEARD DAVID	21-4003D , 21-4003C , 21-12521 , 21-13085 , 21-13086 , 21-13096		200454	34.3	\$4.46		\$40.00	\$44.46
WAFER BARBARA E HITZ,PHYLLIS C WILLIAMS,THOMAS WILLIAMS	21-13097 , 21-13145 , 21-13146		1003086	310.9	\$40.41		\$40.00	\$80.41
NEVA S LARSEN,PHILLIP BAKER	22-4010 , 22-7219 , 22-7236		200602	365.0	\$47.45		\$40.00	\$87.45
PATRICIA MILLER	21-7305 , 21-7138		1003090	152.9	\$19.88		\$40.00	\$59.88
R LAYNE HARRIS	22-2226		200479	31.5	\$4.10		\$40.00	\$44.10
R MAX SNEDEAKER	22-7046		1003113	411.4	\$53.49		\$40.00	\$93.49
RANDALL B HILLMAN	22-7268 , 22-2216		1003120	794.7	\$103.31		\$40.00	\$143.31
RANDY HUGHES	22-7065 , 22-12765 , 22-7085		1003121	0.0	\$0.00		\$40.00	\$40.00
RANDY HUGHES	22-7065 , 22-7085 , 22-12765 , 22-7085		1003122	512.7	\$66.65		\$40.00	\$106.65
RANDY HUGHES	22-7085 , 22-12765 , 22-7065		1003123	1051.1	\$136.65		\$40.00	\$176.65
RANDY HUGHES	22-7085 , 22-12765 , 22-7065		200471	18.4	\$2.39		\$40.00	\$42.39
REXBURG FACTORY LLC	22-7552							
RGG FARMS LLC,JKC FARMS LLC,JUDD CRAPO,JUNIPER VIEW LLC	22-14338 , 22-7649 , 22-14200 , 22-14203 , 22-14202 , 22-14201 , 22-14199 , 22-14198 , 22-7035 , 22-7207B , 22-14340 , 22-14339		1003021	373.6	\$46.57		\$40.00	\$86.57
RHETT WATSON,WILLIAM NEIL TAYLOR	21-2110B , 21-2110A		200453	363.5	\$47.26		\$40.00	\$87.26
RICHARD F SMITH	22-7032		200470	88.3	\$11.47		\$40.00	\$51.47
RIVERSIDE FARMS,UNIT 2 LLC,JUNIPER VIEW LLC,RGC FARMS LLC,FROMOVER 9 LLC	22-2294 , 22-7057 , 22-14217 , 22-14218 , 22-14219 , 22-14216 , 22-14220 , 22-14221 , 22-14223 , 22-14222 , 22-7648		1002943	325.2	\$42.27		\$40.00	\$82.27
ROCKY GULCH FARMS	22-7721		1003161	0.0	\$0.00		\$40.00	\$40.00
ROCKY GULCH FARMS	22-7721		1003162	0.0	\$0.00		\$40.00	\$40.00
ROCKY GULCH FARMS	22-7721		1003163	1335.0	\$173.55		\$40.00	\$213.55
ROCKY GULCH FARMS	22-7721		1003164	0.0	\$0.00		\$40.00	\$40.00
ROCKY GULCH FARMS	22-7721		1003165	0.0	\$0.00		\$40.00	\$40.00
S LYNN LOOSLI,PORTIA R LOOSLI	21-13258 , 21-12358		200635	817.6	\$106.29		\$40.00	\$146.29
SUN GLO INDUSTRIES	22-13429		200521	70.8	\$9.21		\$40.00	\$49.21
THE CEDAR BUTTE OWNERS ASSN INC	22-7794		1003351	67.9	\$8.82		\$40.00	\$48.82
THE CEDAR BUTTE OWNERS ASSN INC	22-7794		1003352	0.0	\$0.00		\$40.00	\$40.00
THE CEDAR BUTTE OWNERS ASSN INC	21-7084		1002986	994.0	\$129.22		\$40.00	\$169.22
THE DEAN & SHIRLENE SCHWENDIMAN FAMILY LTD PARTNERSHIP	22-2193 , 22-7020 , 22-12543		1003128	237.9	\$30.93		\$40.00	\$70.93
THE DEAN & SHIRLENE SCHWENDIMAN FAMILY LTD PARTNERSHIP	22-2193 , 22-7020 , 22-12543		1003129	258.9	\$33.66		\$40.00	\$73.66
THE DEAN & SHIRLENE SCHWENDIMAN FAMILY LTD PARTNERSHIP	21-7084		1003146	0.0	\$0.00		\$40.00	\$40.00
THOMAS GARLOCK	21-7154		200641	0.0	\$0.00		\$40.00	\$40.00
TRAVIS RIGBY	21-7051		200638	0.0	\$0.00		\$40.00	\$40.00
UNIT 1 LLC,UNIT 2 LLC,JUNIPER VIEW LLC	21-7564 , 21-13205 , 21-13206		200633	586.1	\$76.20		\$40.00	\$116.20
UNIT 2 LLC,UNIT 1 LLC,JUNIPER VIEW LLC	21-13205 , 21-7564 , 21-13206 , 21-13201 , 21-13202 , 21-7046		200634	552.7	\$71.85		\$40.00	\$111.85
W JEFFREY WALTERS	22-14206 , 22-4046		200612	308.5	\$40.11		\$40.00	\$80.11
W JEFFREY WALTERS	22-14207 , 22-2222 , 22-2287 , 22-13475 , 22-11185		1003109	875.0	\$113.75		\$40.00	\$153.75
W JEFFREY WALTERS,DYLE B PETERSON	22-4046 , 22-4106 , 22-14206		200686	0.0	\$0.00		\$40.00	\$40.00
WALTERS READY MIX INC	22-7627 , 22-13967		200528	90.8	\$11.81		\$40.00	\$51.81
WALTERS READY MIX INC	22-14019		1003224	252.2	\$32.79		\$40.00	\$72.79



WATER RIGHT	NAME ON WATER RIGHT	Point of Diversions	Minimum Assessment	Total Assessment
22-7463	BRIGHTAM YOUNG UNIVERSITY - IDAHO	1	\$40	\$40.00
21-4114	FREMONT-MADISON JOINT SCHOOL DISTRICT # 215	1	\$40	\$40.00
22-2225	HILL, LARRY M	1	\$40	\$40.00
22-7445	LISA AND NATHAN WOOD	1	\$40	\$40.00
22-7106	MADISON SCHOOL DISTRICT # 321	1	\$40	\$40.00
22-7445	NATHAN A WOOD ETUX	1	\$40	\$40.00
21-13084	RANDY HARDMAN	1	\$40	\$40.00
22-7548	WILCOX, TRISTAN	1	\$40	\$40.00
22-7615	RILEY NORMAN N	1	\$40	\$40.00
22-7766	THOMAS K BAKER	1	\$40	\$40.00
22-12339	KENDALL LEE BALLARD	1	\$40	\$40.00
21-7106A	REXBURG, CITY OF	1	\$40	\$40.00
22-11980	RHETT ROBISON (Frank Coon was previous owner)	1	\$40	\$40.00
22-14025	WALTERS READY MIX	2	\$40	\$80.00
22-7627	WALTERS READY MIX INC	1	\$40	\$40.00
22-7534	BENCH MARK POTATO CO	1	\$40	\$40.00
22-11030	CHUCKS CUSTOM PACKS (WOODCOCK CUSTOM MEAT LLC)	1	\$40	\$40.00
22-10405	CHARLENE AND JOHN GRIFFITH	1	\$40	\$40.00
22-7722	NORTH FORK WATER WORKS	2	\$40	\$80.00

\$840.00

**MADISON GROUND WATER DISTRICT**

Water right Owners	Water Rights	WM/ISNumber	5 YR AVERAGE AF	\$AF	\$Diverion	\$Total
Water right Owners						
3B LLC	22-169	1003117	95.9	\$12.47	\$40.00	\$52.47
ARDEN R STEWART	22-2277 , 22-7303 , 22-2215 , 22-2256A	1003049	172.7	\$22.45	\$40.00	\$62.45
ARLENCO INC	22-4194 , 22-7476 , 22-2185	1003017	399.6	\$51.95	\$40.00	\$91.95
ASHTON FARMS LLC	22-2187	1003006	448.6	\$58.32	\$40.00	\$98.32
ASHTON FARMS LLC	22-10971 , 22-7021	1003008	748.6	\$97.32	\$40.00	\$137.32
B & B FARMS	22-13958 , 22-13746 , 22-13797	1003046	181.3	\$23.57	\$40.00	\$63.57
BAKER FARMS INC	22-7326 , 22-7174	1003087	484.6	\$63.00	\$40.00	\$103.00
BAKER FARMS INC, THOMAS K BAKER	22-11004 , 22-7524 , 22-2171 , 22-11003	1003089	245.7	\$31.94	\$40.00	\$71.94
BEVAN JEPPESEN	22-13670	1003314	0.0	\$0.00	\$40.00	\$40.00
BEVAN JEPPESEN, MICHELLE JEPPESEN	22-13670 , 22-14327	1003313	453.4	\$58.95	\$40.00	\$98.95
BMJ FARMS LLC	22-7364 , 22-2178 , 22-2256D	1003037	506.8	\$65.88	\$40.00	\$105.88
BRANDI SUTTON, SHANE SUTTON	22-7676 , 22-7711	200407	375.1	\$48.76	\$40.00	\$88.76
BROWN INC	22-7512 , 22-7067 , 22-7066 , 22-2254 , 22-13453	1003098	685.4	\$90.10	\$40.00	\$129.10
BROWN INC	22-7512 , 22-7066 , 22-2254 , 22-13453	1003166	1462.8	\$190.16	\$40.00	\$230.16
BYU IDAHO	22-2174	200694	149.7	\$19.46	\$40.00	\$59.46
CATHERINE H ROWAN, WILCOX BROTHERS LLC	22-7792 , 22-7280A , 22-7280B	1002972	658.1	\$85.55	\$40.00	\$125.55
CIRCLE P FARMS LLC	22-2234C , 22-2234A , 22-2234B	1003036	593.6	\$77.17	\$40.00	\$117.17
CITY OF REXBURG, BYU IDAHO	22-13790 , 22-4130 , 22-7176 , 22-7175 , 22-7074 , 22-7754 , 22-7617 , 22-13888	200533	1560.8	\$202.91	\$40.00	\$242.91
D S & S INC, DANNY SUMMERS	22-7300 , 22-7481	1002978	304.0	\$39.52	\$40.00	\$79.52
D S & S INC, JOHN H SMITH & SONS INC	22-2156 , 22-7509 , 22-7510 , 22-7538	200529	235.7	\$30.64	\$40.00	\$70.64
D S & S INC, JOHN H SMITH & SONS INC	22-7538 , 22-7054A , 22-7054B , 22-7509 , 22-7510	200532	699.3	\$90.91	\$40.00	\$130.91
DAVID V SCHWENDIMAN	22-2201A , 22-10624	1002973	984.8	\$128.03	\$40.00	\$168.03
DAVID V SCHWENDIMAN	22-2201A , 22-10624	1003124	721.9	\$93.85	\$40.00	\$133.85
DAVID V SCHWENDIMAN	22-2201A , 22-10624	1003167	0.0	\$0.00	\$40.00	\$40.00
DAVID V SCHWENDIMAN	22-10624 , 22-2201A	1003168	387.1	\$50.32	\$40.00	\$90.32
DAVID V SCHWENDIMAN	22-12656 , 22-7287 , 22-7703	1003085	203.5	\$26.46	\$40.00	\$66.46
SCHWENDIMAN	22-7703 , 22-7704 , 22-13292	1002988	1544.7	\$200.81	\$40.00	\$240.81
DIANE P SCHWENDIMAN	22-7703	1002983	0.0	\$0.00	\$40.00	\$40.00
DIANE P SCHWENDIMAN	22-7703	1002985	835.9	\$108.67	\$40.00	\$148.67
DIANE P SCHWENDIMAN	22-7703	1002989	0.0	\$0.00	\$40.00	\$40.00
DIANE P SCHWENDIMAN	22-13466 , 22-13471 , 22-13472 , 22-13467 , 22-13468 , 22-13469 , 22-13470 , 22-13470	1002998	0.0	\$0.00	\$40.00	\$40.00
DIANE P SCHWENDIMAN	22-13468 , 22-13466 , 22-13467 , 22-13472 , 22-13471 , 22-13470 , 22-13469 , 22-7703	1003145	3410.7	\$443.39	\$40.00	\$483.39
DIANE P SCHWENDIMAN	22-13471 , 22-13466 , 22-13467 , 22-13468 , 22-13469 , 22-13472 , 22-13470	1003147	0.0	\$0.00	\$40.00	\$40.00
DIANE P SCHWENDIMAN	22-13472 , 22-13466 , 22-13467 , 22-13470 , 22-13472 , 22-13469 , 22-13468 , 22-13471 , 22-7703	1003148	563.7	\$73.28	\$40.00	\$113.28
DIANE P SCHWENDIMAN	22-13466 , 22-13471 , 22-13470 , 22-13472 , 22-13469 , 22-13468 , 22-13467 , 22-7703	1003149	716.0	\$93.08	\$40.00	\$133.08
DIANE P SCHWENDIMAN	22-14319 , 22-14311 , 22-14312 , 22-14313 , 22-14314 , 22-14315 , 22-14316 , 22-14317 , 22-14318 , 29-7703 , 22-13293	1002987	780.2	\$101.43	\$40.00	\$141.43
FLOYD WILCOX & SONS INC, WILCOX BROTHERS LLC	22-13574 , 22-2273 , 22-2194B , 22-11034 , 22-13573	1003069	470.0	\$61.10	\$40.00	\$101.10
FLYING H CORP	22-7083A	1003064	189.8	\$24.67	\$40.00	\$64.67
FRANK SUMMERS INC	22-2264B , 22-7668 , 22-2263B	1003034	436.9	\$56.79	\$40.00	\$96.79
FRANK SUMMERS INC	22-10483 , 22-4091 , 22-2219 , 22-7491 , 22-2183	1003130	1625.3	\$211.29	\$40.00	\$251.29
FRANK SUMMERS INC	22-4091 , 22-10483 , 22-2183 , 22-7491 , 22-2219	1003131	187.5	\$24.38	\$40.00	\$64.38
FRANKO FARMS INC	22-13458 , 22-2247 , 22-7071 , 22-7156	1003077	1339.6	\$174.15	\$40.00	\$214.15
FRANKO FARMS INC	22-13458 , 22-2247 , 22-7071 , 22-7156	1003078	699.2	\$90.89	\$40.00	\$130.89
FRANKO FARMS INC	22-7071 , 22-2247 , 22-13458 , 22-7156	1003079	476.0	\$61.87	\$40.00	\$101.87
FREMONT MADISON IRRIGATION DISTRICT	22-13506	1003233	35.5	\$4.62	\$40.00	\$44.62

FROMOVER 9 LLC, STATE OF IDAHO, UNIT 1 LLC, CKC FARMS LLC, UNIT 2 LLC, JUNIPER VIEW LLC, UNIT 8 FARMS LLC, STATE OF IDAHO LLC, UNIT 2 LLC, JUNIPER VIEW LLC, UNIT 8 FARMS LLC	22-13953, 22-13949, 22-13947, 22-13945, 22-13954, 22-13951, 22-13946, 22-13952, 22-14251, 22-14250, 22-14249, 22-14248, 22-14247, 22-14246, 22-13950, 22-14245, 22-14244, 22-14243, 22-14242, 22-14241, 22-14239, 22-14238, 22-14237, 22-14236, 22-13948, 22-14235, 22-14234, 22-14233, 22-14232, 22-14231, 22-14230, 22-14229, 22-14228, 22-14227	1003013	11.8	\$1.54	\$40.00	\$41.54
FROMOVER 9 LLC, UNIT 1 LLC, CKC FARMS LLC, UNIT 2 LLC, JUNIPER VIEW LLC, UNIT 8 FARMS LLC, STATE OF IDAHO LLC, UNIT 2 LLC, CKC FARMS LLC, UNIT 8 FARMS LLC	22-13951, 22-14251, 22-14250, 22-14249, 22-14248, 22-14247, 22-14246, 22-13950, 22-14245, 22-14244, 22-14243, 22-14242, 22-14241, 22-14239, 22-14238, 22-14237, 22-14236, 22-13948, 22-14235, 22-14234, 22-14233, 22-14232, 22-14231, 22-14230, 22-14229, 22-14228, 22-13954, 22-13952, 22-13949	1003015	468.6	\$60.92	\$40.00	\$100.92
GALE W HARDING, BLAINE SMITH	22-7023B, 22-7023A	1003027	52.5	\$6.82	\$40.00	\$46.82
GARTH SUTTON	22-7675	1003203	1014.6	\$131.89	\$40.00	\$171.89
SUTTON	22-7472, 22-7092, 22-13289	1002994	1070.8	\$139.20	\$40.00	\$179.20
GRANT H RICKS, BRBFT FARM LLC, MGR FARMS LLC	22-13443, 22-7064B, 22-7064D, 22-7064C	1003025	131.3	\$17.06	\$40.00	\$57.06
GRANT H RICKS, MGR FARMS LLC	22-13442, 22-7132	1003072	96.3	\$12.52	\$40.00	\$52.52
GUY A ERIKSON	22-13571, 22-2197	1003028	470.4	\$61.16	\$40.00	\$101.16
GUY A ERIKSON	22-7184	1003035	785.2	\$102.08	\$40.00	\$142.08
GUY A ERIKSON BRIGHAM YOUNG UNIVERSITY IDAHO	22-2197, 22-13572	1002953	177.9	\$23.13	\$40.00	\$63.13
GWEN A SUTTON	22-7227	200409	730.4	\$94.96	\$40.00	\$134.96
HARD WAY LP	22-7563, 22-2297	1002995	314.9	\$40.94	\$40.00	\$80.94
HARD WAY LP	22-2198	1002999	514.9	\$66.94	\$40.00	\$106.94
HARD WAY LP	22-7706, 22-7654	1003154	196.4	\$25.53	\$40.00	\$65.53
PARTNERSHIP	22-13332, 22-2177, 22-2224	1003081	1102.1	\$143.28	\$40.00	\$183.28
JEPPESEN BROTHERS RANCH, MOODY GREEK RANCH LLC	22-7687, 22-7695B, 22-7621B, 22-7680A, 22-7680B	1003150	1377.3	\$179.05	\$40.00	\$219.05
JEWEL N HANSEN	22-2275	1003004	452.0	\$56.76	\$40.00	\$96.76
JOHN H SMITH	22-13457	1003001	803.5	\$104.45	\$40.00	\$144.45
JOSEPH JEPPESEN DALE JEPPESEN	22-7664, 22-7377	1003041	781.9	\$101.65	\$40.00	\$141.65
JUNIPER VIEW LLC, UNIT 2 LLC, CKC FARMS LLC, STATE OF IDAHO, UNIT 1 LLC, UNIT 8 FARMS LLC, FROMOVER 9 LLC	22-14243, 22-14244, 22-14245, 22-13950, 22-14246, 22-14247, 22-14248, 22-14249, 22-14250, 22-14251, 22-13952, 22-13953, 22-13945, 22-13947, 22-13949, 22-13951, 22-13946, 22-13954, 22-14227, 22-14228, 22-14229, 22-14230, 22-14231, 22-14232, 22-14233, 22-14234, 22-14235, 22-13948, 22-14236, 22-14237, 22-14238, 22-14239, 22-14240, 22-14241, 22-14242	1003011	2293.1	\$298.11	\$40.00	\$338.11
KEVIN B WEBSTER	22-2250	1003061	229.9	\$29.88	\$40.00	\$69.88
INC, SHAWN WEBSTER	22-14091, 22-14088, 22-7325, 22-14089, 22-14090	1003062	1156.0	\$150.28	\$40.00	\$190.28
KEVIN B WEBSTER, SHAWN WEBSTER	22-13518, 22-2190, 22-7408	1003119	1571.3	\$204.27	\$40.00	\$244.27
KIRKLAND FARM LLC	22-7004	1003044	564.7	\$73.41	\$40.00	\$113.41
KYLE BYBEE	22-7699	200408	66.8	\$8.68	\$40.00	\$48.68
LANE ARNOLD	22-2181	1002955	3223.7	\$419.08	\$40.00	\$459.08
LARD DEE ROBINSON KATHRYN ROBINSON	22-7051, 22-13517, 22-7374	1003007	812.1	\$105.57	\$40.00	\$145.57
LARD DEE ROBINSON, KATHRYN ROBINSON	22-7374, 22-7051, 22-13517	1003104	373.9	\$48.60	\$40.00	\$88.60
LAVERE RICKS FARM LLC	22-7063	1003009	245.1	\$31.86	\$40.00	\$71.86
LAVERE RICKS FARM LLC	22-2245B	1003050	306.1	\$39.79	\$40.00	\$79.79
LAYNE RICKS R LAYNE HARRIS	22-12900, 22-7397	1003099	117.5	\$15.27	\$40.00	\$35.27
LEE H SUTTON RANDALL D SUTTON, KENT V SUTTON	22-10897, 22-2242A, 22-2242B	1003092	538.2	\$69.96	\$40.00	\$109.96
LORI SUTTON, STANLEY SUTTON	22-13969, 22-7493, 22-2251, 22-7495, 22-13968, 22-14388	1003042	461.4	\$59.98	\$40.00	\$99.98
LORI SUTTON, STANLEY SUTTON	14388	1003045	626.6	\$81.46	\$40.00	\$121.46
MERLE K JEPPESEN BEVAN JEPPESEN	22-7683, 22-13671	1003133	893.2	\$116.11	\$40.00	\$156.11
MGR FARMS LLC	22-2299B, 22-2299A	1003040	403.5	\$52.45	\$40.00	\$92.45
MGR FARMS LLC	22-7089B, 22-7089A, 22-2245A	1003047	207.4	\$26.96	\$40.00	\$66.96
MGR FARMS LLC, RY RICKS FARMS LLC	22-2220B, 22-4184D, 22-4184A, 22-4184E, 22-4184F, 22-2220A	1003026	481.5	\$62.60	\$40.00	\$102.60
MYRON LEWIS FARMS	22-13440	1003065	486.5	\$63.24	\$40.00	\$103.24
NATHAN ASHCRAFT BHA INC	22-13281, 22-2168, 22-4052, 22-13279	1003094	286.5	\$34.65	\$40.00	\$74.65
NATHAN ASHCRAFT BHA INC	22-13281, 22-2168, 22-4052, 22-13279	1003095	218.5	\$28.41	\$40.00	\$68.41
NEDS MOODY GREEK PRODUCE	22-7574	200520	3.8	\$0.49	\$40.00	\$40.49
NORVUE FARMS GENERAL PARTNERSHIP	22-7259	1003101	294.6	\$38.30	\$40.00	\$78.30

R & B INC, RANDY HUSKINSON, ROBERT D HUSKINSON	22-7082 , 22-7498 , 22-11019 , 22-7047A	1003063	401.8	\$52.24	\$40.00	\$92.24
R & D GOULD FARMS LLC	22-2235	1003043	463.3	\$60.22	\$40.00	\$100.22
R & D GOULD FARMS LLC RTG FARMS LLC	22-7539B , 22-2231 , 22-7047B , 22-7083B , 22-13441 , 22-14335	1003018	635.0	\$82.55	\$40.00	\$122.55
R & S WEBSTER ENTERPRISES LLC	22-2194A , 22-2194C	1003091	526.1	\$68.39	\$40.00	\$108.39
RANDY HUSKINSON FAMILY LTD PARTNERSHIP	22-2166	200531	231.1	\$30.05	\$40.00	\$70.05
RAY R POCOCC	22-2195A , 22-19278 , 22-13280	1003051	302.0	\$39.26	\$40.00	\$79.26
RAY R POCOCC	22-2195A , 22-13278 , 22-13280	1003052	421.2	\$54.76	\$40.00	\$94.76
RAY R POCOCC, THE RALPH R & BETH POCOCC FAMILY LTD PARTNERSHIP	22-14082 , 22-7052A , 22-7439 , 22-7167A , 22-14084 , 22-14083 , 22-2211D	1003057	649.4	\$84.42	\$40.00	\$124.42
REESE J GODFREY	22-2200	1003098	261.7	\$34.02	\$40.00	\$74.02
RGC FARMS LLC, CKC FARMS LLC, NORTHWEST FARM CREDIT SERVICES PCA CRAPO AG LLC, JKC FARMS LLC, UNIT 1 LLC	22-14184 , 22-14170 , 22-14171 , 22-14172 , 22-14173 , 22-14174 , 22-14175 , 22-14176 , 22-14177 , 22-14178 , 22-14179 , 22-14180 , 22-14181 , 22-14182 , 22-14183	1003083	1043.6	\$135.67	\$40.00	\$175.67
RICHARD F SMITH	22-2184 , 22-7075 , 22-11149 , 22-2230 , 22-11147 , 22-7507	1003002	1114.8	\$144.93	\$40.00	\$184.93
RICHARD F SMITH	22-7507 , 22-2184 , 22-7075 , 22-11149 , 22-2230 , 22-11147	1003003	377.7	\$49.10	\$40.00	\$89.10
RICHARD F SMITH	22-2175B , 22-7502 , 22-2175A	1003005	252.4	\$32.81	\$40.00	\$72.81
RICHARD F SMITH	22-11149 , 22-7075 , 22-11147 , 22-2184 , 22-2230	1003033	0.0	\$0.00	\$40.00	\$40.00
ROBERT D HUSKINSON, RANDY HUSKINSON, R & B INC	22-11019 , 22-7498 , 22-7082 , 22-7047A	1003020	575.7	\$74.84	\$40.00	\$114.84
ROBERT SCOTT WOOD	22-13480 , 22-2192	1003116	562.7	\$73.15	\$40.00	\$113.15
ROSS T PARKINSON, PARKINSON FARMS INC	22-2289 , 22-7521A	1002997	1237.4	\$160.86	\$40.00	\$200.86
SALLY SMITH	22-7336	1002993	0.0	\$0.00	\$40.00	\$40.00
SETH WOOD FARMS INC	22-2176	1003048	190.5	\$24.76	\$40.00	\$64.76
SETH WOOD FARMS INC	22-7518 , 22-7060	1003059	431.9	\$56.15	\$40.00	\$96.15
SETH WOOD FARMS INC	22-7518 , 22-7060	1003060	728.2	\$94.67	\$40.00	\$134.67
SETH WOOD FARMS INC	22-7485	1003082	288.5	\$37.51	\$40.00	\$77.51
SHAWN WEBSTER	22-2252 , 22-13535	1003125	669.8	\$87.07	\$40.00	\$127.07
STAN SCHWENIDMAN	22-7564	1003160	434.3	\$56.45	\$40.00	\$96.45
STEPHEN COOK, GRANT H RICKS, NANCY COOK	22-13960 , 22-2238B , 22-13747 , 22-13959	1003039	629.7	\$81.87	\$40.00	\$121.87
SUE R HUSKINSON, ROBERT D HUSKINSON	22-11376 , 22-7553A , 22-2244	200522	222.8	\$28.97	\$40.00	\$68.97
SUMNERCO INC, SUMNERCO MANAGEMENT INC	22-14128 , 22-7136 , 22-10972 , 22-14373	1003075	962.9	\$125.18	\$40.00	\$165.18
SUMNERCO MANAGEMENT INC	22-2191 , 22-14129 , 22-14130 , 22-7515 , 22-13955 , 22-2258A , 22-2295 , 22-10777 , 22-10646	1003032	568.9	\$73.96	\$40.00	\$113.96
SUMNERCO MANAGEMENT INC	22-2191 , 22-2258A , 22-7515 , 22-14130 , 22-14129 , 22-13955 , 22-10646 , 22-10777 , 22-2295	1003108	1336.9	\$173.80	\$40.00	\$213.80
SUMNERCO MANAGEMENT INC	22-2191 , 22-14129 , 22-14130 , 22-7515 , 22-2258A , 22-2295 , 22-10777 , 22-10646 , 22-13955	1003159	282.8	\$36.76	\$40.00	\$76.76
SUMMERS FARM & RANCH INC	22-2260B , 22-7055B	1003107	1049.1	\$136.38	\$40.00	\$176.38
SUMMERS FARM & RANCH INC	22-7689 , 22-2258B , 22-11318 , 22-2238	1003110	749.0	\$97.37	\$40.00	\$137.37
SUMMERS FARM & RANCH INC	22-7689 , 22-2258B , 22-11318 , 22-2238	1003111	740.0	\$96.20	\$40.00	\$136.20
T L R INC	22-2298 , 22-2227	1003066	673.4	\$87.54	\$40.00	\$127.54
TED ERIKSON	22-7000	1003071	167.4	\$21.77	\$40.00	\$61.77
TETON NEWDALE CEMETERY DISTRICT	22-2147	200535	21.1	\$2.74	\$40.00	\$42.74
PARTNERSHIP, RAY R POCOCC	7167A	1003056	252.4	\$32.81	\$40.00	\$72.81
THE WALTERS FAMILY LTD PARTNERSHIP, MONA WALTERS	22-13516 , 22-2195B , 22-7010 , 22-7048 , 22-7050	1003097	760.2	\$98.82	\$40.00	\$138.82
THE WALTERS FAMILY LTD PARTNERSHIP, MONA WALTERS	22-13516 , 22-2195B , 22-7010 , 22-7048 , 22-7050	1003103	659.3	\$85.71	\$40.00	\$125.71
TRS FARMS	22-7040 , 22-2182	1003053	1018.4	\$132.40	\$40.00	\$172.40
TRS FARMS	22-7040 , 22-2182	1003054	315.0	\$40.96	\$40.00	\$80.96
TRS FARMS	22-7040 , 22-2182	1003055	531.5	\$69.10	\$40.00	\$109.10
UNIT 1 LLC, CKC FARMS LLC, NORTHWEST FARM CREDIT SERVICES PCA, CRAPO AG LLC, JKC FARMS LLC, RGC FARMS LLC	22-14193 , 22-14170 , 22-14171 , 22-14172 , 22-14173 , 22-14174 , 22-14175 , 22-14176 , 22-14177 , 22-14178 , 22-14179 , 22-14180 , 22-14181 , 22-14182 , 22-14183 , 22-14184 , 22-14185 , 22-14186 , 22-14187 , 22-14188 , 22-14190 , 22-14191 , 22-14192	1003010	2088.0	\$271.45	\$40.00	\$311.45

