

CANYON CREEK WATER DISTRICT 61A

140 S 3rd E, Mountain Home, ID

Terry Seegrist, Watermaster

Phone: 208-587-4867

September 17, 2013

Jeff Peppersack
Idaho Department of Water Resources
2735 Airport Way
Boise ID 8705

RECEIVED
SEP 17 2013
WATER RESOURCES
WESTERN REGION

RE: Letter of Explanation from Canyon Creek Water District 61A

Dear Mr. Peppersack:

The Canyon Creek Water District 61A has used the word "others" to describe the basin 63 water rights and has assessed for them since the beginning of Mtn. Home Irrigation District.

The Canyon Creek Water District 61A assessments for the Mtn. Home Irrigation District include Boise Basin Water right nos. 63-2188, 63-2214, 63-19893, and 63-20139. These water rights are part of the "others" in the Mtn Home Water right listing on watermaster/budget reports, see example attached.

Mountain Home Irrigation District storage and natural flows are comingled with Long Tom and Canyon Creek natural flow water rights. Water right nos. 63-2188, 63-2214, 63-19893, and 63-20139 are part of Canyon Creek Water District 61A operations and water delivery. The point of injection and re-diversion on Long Tom and Canyon Creeks are regulated by the 61A Watermaster as these rights are comingled with both creeks (61A) natural flow rights. See rights conditions of approval.

Sincerely,

Terry Seegrist, 61A Watermaster.

Terry Seegrist
Calvin Ireland, 61A Chairman

Calvin Ireland
Enclosures: Warner Memo, water right copies,

MOUNTAIN HOME IRRIGATION DISTRICT
System Description

by Linda A. Werner
Sr. Water Resources Agent

Mountain Home Irrigation District services its irrigated acreages from 3 reservoirs. These are Little Camas Reservoir whose source is Little Camas Creek, Long Tom Reservoir with source Long Tom Creek and Mountain Home Reservoir (aka Rattlesnake Reservoir) with sources of Canyon Creek and Rattlesnake Creek. All three reservoirs are under one system.

Little Camas Creek flows northerly into Little Camas Reservoir. Other sources for storage in Little Camas Reservoir are Dollar Creek, Castle Rock Creek, Chimney Creek and Buck Creek; all are tributary to Cat Creek which flows into Little Camas Reservoir. These sources have no manmade development. Water is conveyed from Little Camas Reservoir by means of an aqueduct whose beginning is located in T1S, R9E, Section 9, SW1/4 NE1/4. The point of origin of this aqueduct is located in drainage Basin 63. The overflow from Little Camas Reservoir flows to the Anderson Ranch Reservoir.

Effluent from this aqueduct flows to the East Fork of Long Tom Creek (Basin 61) in T1S, R8E, Section 22, SW1/4 SW1/4. Water then flows to Long Tom reservoir. Water is conveyed through Long Tom Creek via the spillway in Long Tom Reservoir which is located in T1S, R7E, Section 36, SW1/4 SW1/4. The confluence of Long Tom Creek and Canyon Creek is located in T1S, R7E, Section 31, NW1/4 SW1/4. The means of conveyance from this point is Canyon Creek.

Approximately 5 miles downstream is a feeder canal located in T2S, R6E, Section 36, NE1/4 NW1/4. That canal conveys water to the lands on the east side of the district; some of which were previously known as Elmore County Irrigated Farms. This canal conveys water to Mountain Home Reservoir. Also, at this point, excess water can be conveyed to the Snake River via the old Canyon Creek channel.

A second canal, located in T2S, R6E, Section 36, NE1/4 SW1/4, conveys water to the western lands of the irrigation district. This canal is known as the Lamberton West Side Canal. Any remaining water (if any, there is usually none) will go to a private reservoir located in T4S, R7E, Section 20, NE1/4 SW1/4. Mountain Home Irrigation District's responsibility for water conveyance ends just above this area.

Rattlesnake Creek is also tributary to Mountain Home Reservoir with the inflow located in T3S, R7E, Section 16, NW1/4 NW1/4. The outflow from the dam to the canal originates in T3S, R7E,

MICROFILMED

AUG 11 1992

Section 18, SW1/4 SE1/4, which used to be the Rattlesnake Creek channel. Spillway water also runs into the canal.

Effluent from the Mountain Home Reservoir is carried through the East Side Canal, located in T3S, R7E, Section 18, SW1/4 SE1/4 and conveys water to the east side of the district lands. The East Side Canal ends in the vicinity of T4S, R7E, Section 16, NW1/4 NW1/4. At this point the conveyance of the water is no longer the responsibility of the irrigation district. There are also ponds in the vicinity for any overflow, which is rare. The flow in the canal after this point is private.

Water was first put to use upon lands under Mountain Home Irrigation District in approximately 1892.

Completion dates of reservoirs, per our records:

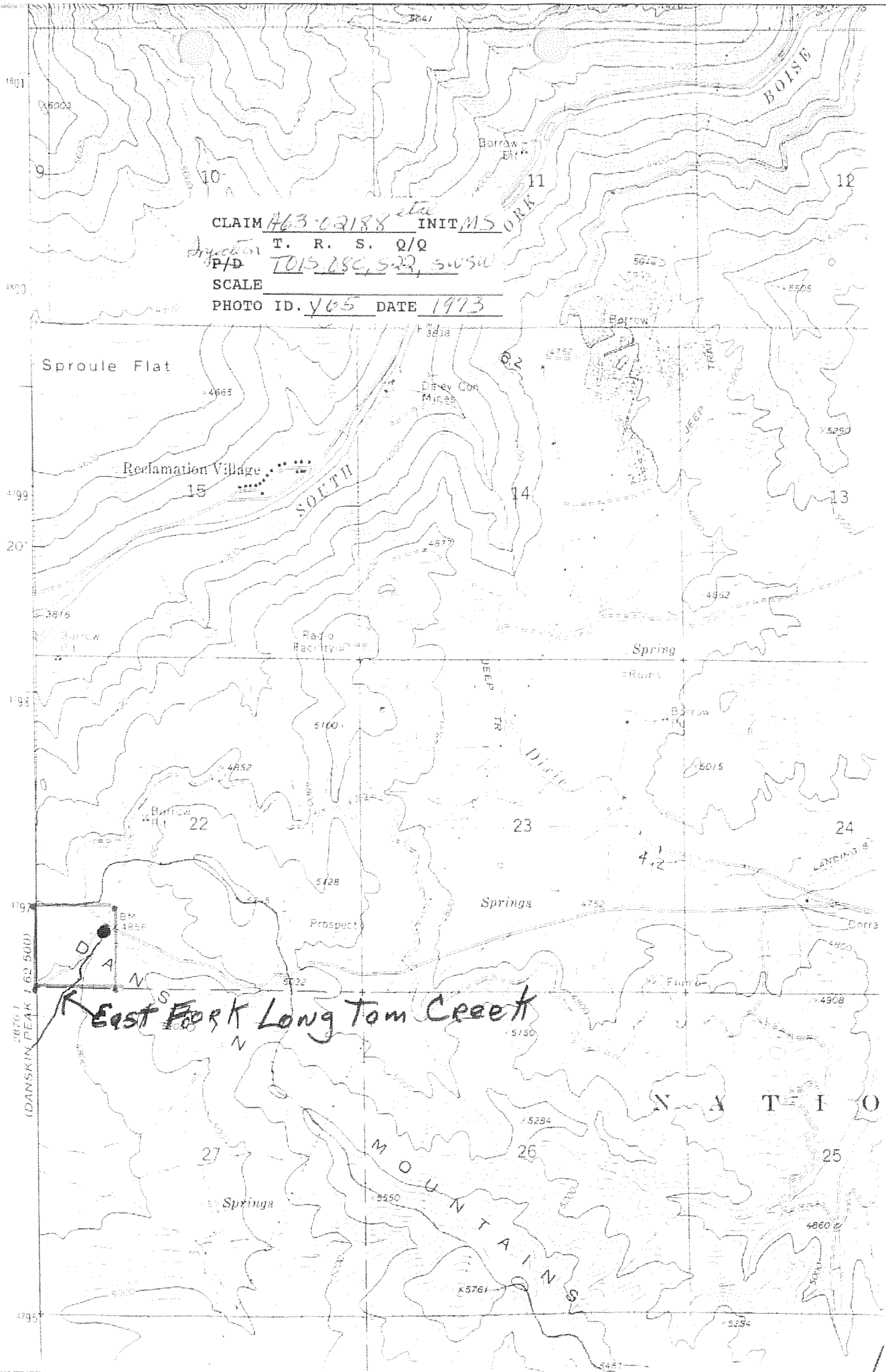
Little Camas reservoir-1912
Mountain Home reservoir-1906
Long Tom reservoir-1906

See adjudication claim A63-20139 for a map depicting the system and places of use.

See decrees 61-A, 61-A-1, 61-B and 63-A

MICROFILMED

AUG 11 1992



CLAIM 463-02188 INITIALS ORK

Section T. R. S. Q/Q
P/D TOP 28C, 522, 5050

SCALE

PHOTO ID. 465 DATE 1973

Sproule Flat

Reclamation Village

SOUTH

Disey Con
Mines

Radio
Facility

Spring

Ruins

Borrow
Pit

5015

24

Landing

Corr

Sinks

Prospect

N A T I O

MOUNTAIN

Sinks

East Fork Long Tom Creek

MAID
213

Canyon
Creek

Redirection
PCD →

Spring

Reservoir

Interstate Airway
Communications Station

6 31
 ← Canal to Mountain Home
 Reservoir

CANAL

1

6

5

12

7

3

PIPELINES

MILLER

HOME RESERVOIR

ANDERSON RANCH DAM QUADRANGLE

IDAHO-ELMORE CO.

7.5 MINUTE SERIES (TOPOGRAPHIC)

2970 IV
(PINE)

DOCKY BAR 43 MI

928 25'

590000 FEET

930

931

115°22'30"

43°22'30"



LITTLE CAMAS PRAIRIE TIS

CLAIM 703-02188 et al INIT MS

T. R. S. Q/Q

P/D 15 9E 14 S WNE

SCALE

PHOTO ID. V65 DATE 1973

620000
FEET

