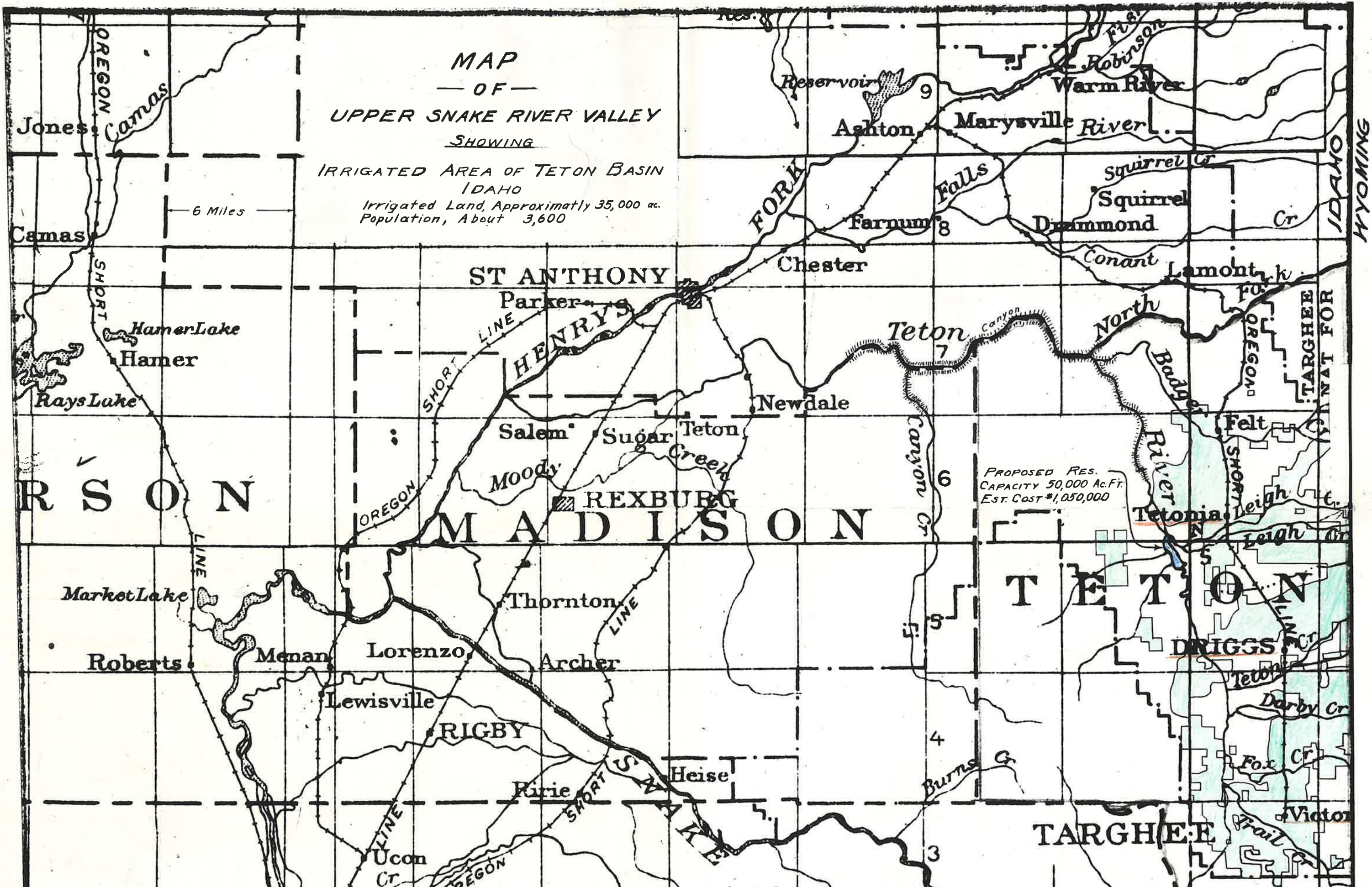


MAP  
— OF —  
UPPER SNAKE RIVER VALLEY  
SHOWING

IRRIGATED AREA OF TETON BASIN  
IDAHO  
Irrigated Land, Approximately 35,000 ac.  
Population, About 3,600

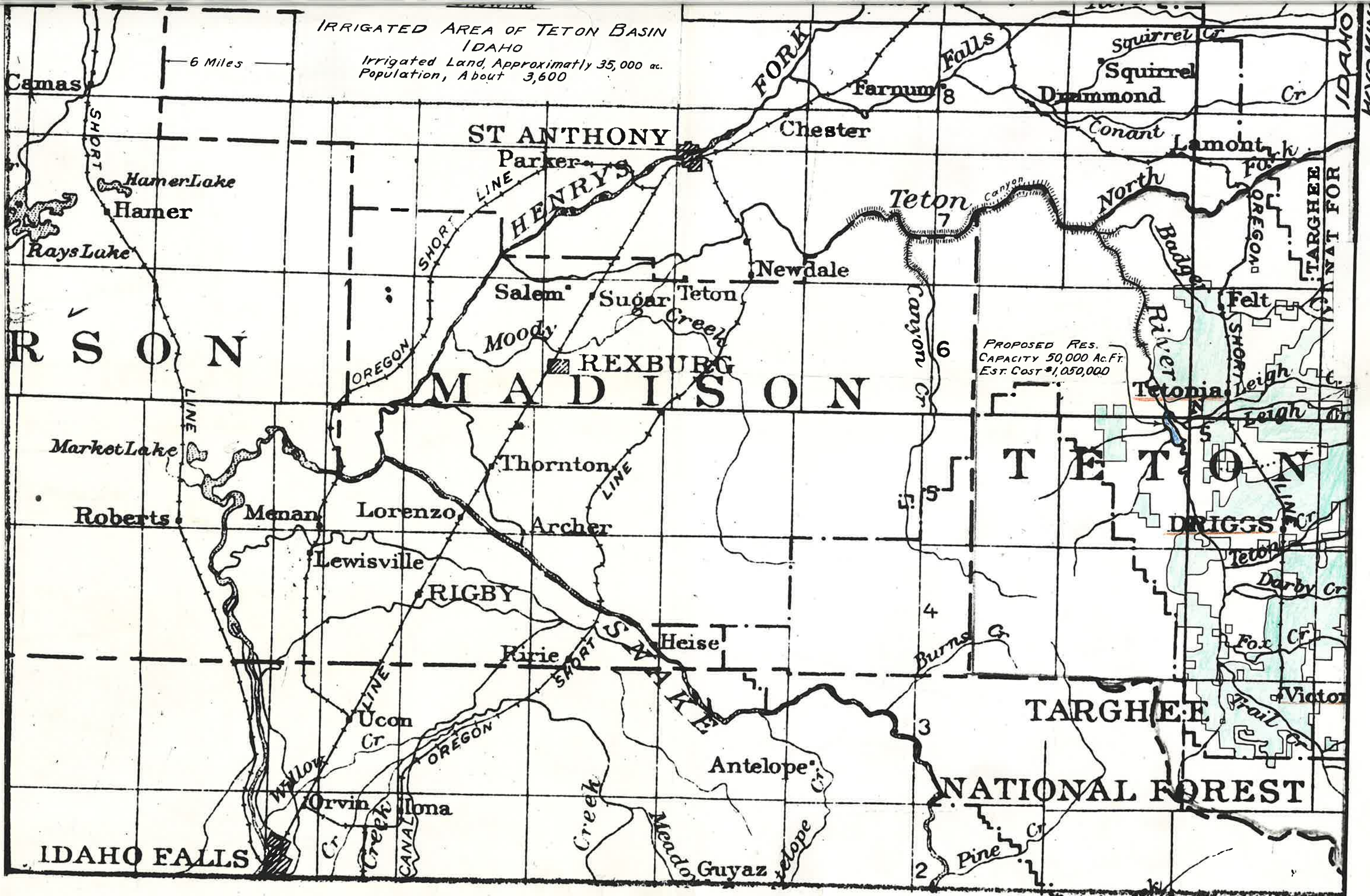
6 Miles

PROPOSED RES.  
CAPACITY 50,000 Ac.Ft.  
EST. COST \$1,050,000



IRRIGATED AREA OF TETON BASIN  
IDAHO  
Irrigated Land, Approximately 35,000 ac.  
Population, About 3,600

6 Miles



PROPOSED RES.  
CAPACITY 50,000 Ac.Ft.  
EST. COST \$1,050,000

Camas

SHORT LINE

Hamer Lake  
Hamer

Rays Lake

BLAINE

ST ANTHONY

Parker  
HENRY'S

Chester

Newdale

Salem  
Sugar  
Teton  
Moody  
Creek

REXBURG

MADISON

Teton 7

Canyon Cr 6

Canyon

North

Badger  
River

Felt

Leigh

Leigh

Leigh

Leigh

TETON

DRIGGS

Teton

Darby Cr

Fox Cr

Victor

Trail

TARGHEE

NATIONAL FOREST

IDAHO FALLS

Orvin Cr

Ucon Cr

WYLLIE

CRICK

CANAL

Creek

Meado

Guyaz

Antelope

Cr

2

Pine Cr

4

Burns Cr

5

5

6

7

8

Farnum

Falls

Squirrel Cr

Squirrel

Drummond

Conant

Lamont

Cr

IDAHO WYOMING



1918

MAP OF UPPER SNAKE  
RIVER VALLEY

Toraher Forest











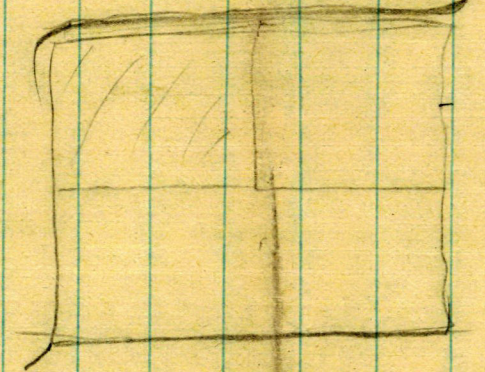




~~3000~~  
~~40~~  
120,000  
60  
180,000

16 acre ft per day

1/2 60



560



Daily gage height, in feet, and discharge, in second-feet, of

Snake River at NEELEY IDAHO, for the year ending Sept. 30, 1918. CLIFTON MORGAN H. R. WALLIS } observed

for the year ending Sept. 30, 1918.

Table of use: Half tenths. Used rating table dated 7/23/17. OCT. 1 - JUNE 21.

Drainage area square miles.

Gage read to AUTOMATIC once a day

NOTE - ESTIMATED JAN. 7 - 18, JAN. 19 - FEB. 2, FEB. 20 - 22, FEB. 20 - 22, FEB. 20 - 22, APR. 1 - 6, MAY 6 - 7 & JUN. 19. SHIFTED JUN. 22 - 23. USED RATING TABLE DATED 7/23/17 AFTER APPLYING -0.03 FT. TO RECORDED GHS. JUNE 24 - SEPT. 30 INTERPOLATED NOV. 26-27; FEB. 25 & JUN. 28-29.

Main data table with columns for months (OCT to SEPT), days, gage height, and discharge. Includes summary rows for Total, Mean, Run-off, Maximum, Minimum, and Accuracy.

Vertical text on the right side of the table, including 'Quarter' labels and 'Year' at the bottom.

Snake at Wesley

1917-18







Daily gage height, in feet, and discharge, in second-feet, of \_\_\_\_\_ River at \_\_\_\_\_ for 191

Drainage area \_\_\_\_\_ square miles. (observer)

Daily gage height, in feet, and discharge, in second-feet, of SNAKE River at MILNER, IOWA for 1918

Drainage area \_\_\_\_\_ square miles. (observer) W. N. McCONNEL

Table of gage height only. ONLY. 10/12/18  
 Mean of discharges used on numerous dates when marked changes occurred instead of discharge for the mean of the two daily gage heights which is recorded in the gage height column.

Day	OCTOBER		NOVEMBER		DECEMBER		JANUARY		FEBRUARY		MARCH		Day	APRIL		MAY		JUNE		JULY		AUGUST		SEPTEMBER		Day
	Gage height	Discharge	Gage height	Discharge	Gage height	Discharge	Gage height	Discharge	Gage height	Discharge	Gage height	Discharge		Gage height	Discharge	Gage height	Discharge	Gage height	Discharge	Gage height	Discharge	Gage height	Discharge	Gage height	Discharge	
1													1		10.3	13.75	15.75	165	30	1.8	36	1			1	
2													2		11.0	12.95	14.45	18	36	1.7	32	2			2	
3													3		11.5	13.4	13.45	20.5	46	1.7	32	3			3	
4													4		11.5	13.95	13.35	46.1	298	1.65	30	4			4	
5													5	12.1	12.15	13.6	17.5	34	1.7	32	5			5		
6													6	12.2	13.1	13.7	12.2	16.5	30	1.75	34	6			6	
7													7	11.85	14.3	13.9	13.15	17	32	1.75	34	7			7	
8													8	11.2	14.4	14.9	12.8	17	32	1.7	32	8			8	
9													9	11.0	15.2	14.6	10.8	17.5	34	3.95	292	9			9	
10													10	10.9	15.0	14.75	1.7	32	3.9	284	10			10		
11													11	11.0	14.8	15.9	11.9	3630	11.05	2660	4.7	292	11			11
12													12	10.9	14.6	16.1	11.2	2810	10.45	2320	11.2	2910	12			12
13													13	10.75	14.3	16.4	11.8	3500	11.45	3080	9.15	1520	13			13
14													14	11.1	13.5	16.65	13.4	6330	8.95	1540	7.05	772	14			14
15													15	11.3	12.6	16.9	12.5	4550	8.1	1040	9.45	1740	15			15
16													16	12.2	12.2	17.75	12.9	5290	10.65	2730	12.6	4730	16			16
17													17	12.3	12.6	18.15	13.2	5900	12.6	4730	12.8	5700	17			17
18													18	12.5	12.55	18.65	13.35	7370	12.3	4220	10.1	2600	18			18
19													19	12.3	12.7	19.35	13.15	5800	12.0	3880	7.2	2210	19			19
20													20	12.3	12.35	19.55	11.85	3560	13.7	7010	6.5	1170	20			20
21													21	11.55	12.7	19.85	11.15	2760	10.9	2520	2.2	54	21			21
22													22	10.5	12.0	19.5	11.10	2710	11.65	4500	4.0	286	22			22
23													23	10.65	11.55	19.2	5.7	805	9.8	2080	5.5	738	23			23
24													24	10.7	7.5	18.8	1.8	36	8.1	2200	1.8	36	24			24
25													25	10.4	9.25	18.65	1.85	38	5.2	549	6.15	1080	25			25
26													26	10.85	10.15	18.6	1.75	34	7.6	1950	4.9	509	26			26
27													27	11.15	11.15	18.85	1.55	26	6.45	6.06	4.95	512	27			27
28													28	10.1	9.8	18.5	1.55	26	5.6	769	10.5	3420	28			28
29													29	10.0	9.2	18.65	1.55	26	4.05	300			29			29
30													30	9.6	13.9	17.65	1.6	28	1.8	36			30			30
31													31		12.6		1.6	28	1.8	36			31			31

TOTAL																											
Mean																											
Sec.-ft. per square mile																											
Run-off, depth in inches																											
Run-off in acre-feet																											
Maximum																											
Minimum																											
Accuracy																											

Gage hts. checked from obs. book. Discharge applied by Feb. Gage hts. checked by Feb. Discharge checked by Feb.

Daily gage height, in feet, and discharge, in second-feet, of SOUTH SIDE CANAL, River at MILNER, IDAHO, for 1918

Daily gage height, in feet, and discharge, in second-feet, of SOUTH SIDE CANAL, River at MILNER, IDAHO, for 1918

Drainage area, square miles.

F. W. DEMING, observer.

Drainage area, square miles.

W. N. McCONNEL, observer.

RECORDS FROM START GAGE OCT. 1 APR. 4  
WASTE GATES PROBABLY OPEN ON SOME DATES NOT  
MENTIONED BELOW FOR LACK OF DEFINITE  
INFORMATION, HOWEVER, COMPUTATIONS AT SUCH TIMES  
ARE UPON BASIS OF NORMAL CONDITIONS

Table with columns for months (OCTOBER to MARCH) and rows for gage height and discharge. Includes handwritten data for each day.

Summary table with rows for TOTAL, Mean, Sec.-ft. per square mile, Run-off in acre-feet, Maximum, Minimum, and Accuracy.

Table with columns for months (APRIL to SEPTEMBER) and rows for gage height and discharge. Includes handwritten data for each day.

Summary table with rows for TOTAL, Mean, Sec.-ft. per square mile, Run-off in acre-feet, Maximum, Minimum, and Accuracy.

TO HALF TENTHS UP  
Light of eye (Half in the 20 11.6 3.0 11.5) 10-6  
Mean hourly discharge used Jul 7-8  
WASTE GATES BELOW GAGE OPEN DURING ALL OF PART OF AUG. 11-14, AUG. 24-30 & SEPT. 13-14  
DISCHARGE ESTIMATED FROM AVAILABLE DATA. WASTE GATES ALSO OPEN JUNE 20-22 BUT DATA  
TOO MEAGER TO WARRANT ESTIMATES OF TOTAL FLOW. FLOW GAGE QUANTITIES GIVEN FOR THIS  
PERIOD ARE ESTIMATES OF FLOW ALLOWED TO PASS DOWN CANAL FOR IRRIGATION USE

Gage Hts. checked from obs. book 10-6  
Computed by W.N. McConnel  
Checked by W.N. McConnel  
Gage Hts. checked by W.N. McConnel