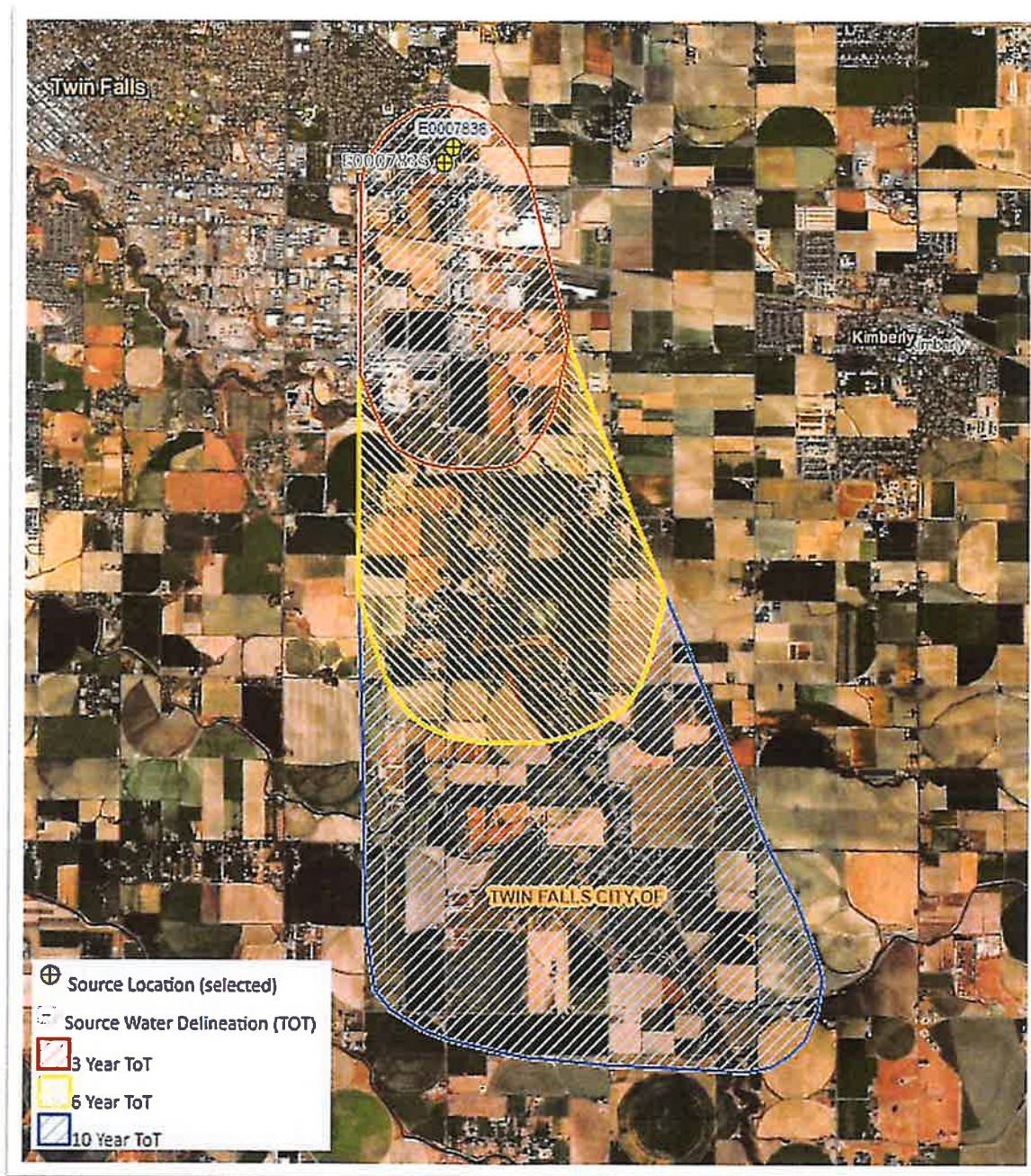


Idaho Department of Environmental Quality

Source Water Assessment (SWA) and Protection Area

Maps/delineations related to SWA are taken from IDEQ website at:

<https://mapcase.deq.idaho.gov/swa/default.html>



Well information and locations are based on well driller reports from IDWR.

CHOBANI NAME	TAG NUMBER	PERMITTED USE	Casing Diameter	Total Depth
TW-2	D0086369	Monitoring	10	151
TW-1	D0086368	Monitoring	10	605
OW-2	D0092538	Monitoring/Test	6	142
OW-1	D0092537	Test	6	102
TW-3	D0092515	Monitoring/Test	8	204
MW-2	D0092906	Monitoring	6	203
MW-4	D0092908	Monitoring	6	203
MW-1	D0092905	Monitoring	6	162
MW-3	D0092907	Monitoring	8	203
MW-5	D0092909	Monitoring	Not drilled	
MW-6	D0092910	Monitoring	Not drilled	

