

Name of Present  
Owner

WATER RIGHT  
IDENTIFICATION NO.

Amount  
Second  
Feet (CFS)

1

2

3

4

5

6 is out

Sep

7 66	7 24	7 02	6 68	6 42
18 6	18	17	17	16
2 76	2 74	2 72	2 72	2 72
2 79	2 79	2 70	2 70	2 70
25 66	25 66	16 26	16 26	16 26
13 10	13 10	13 10	13 10	13 10
6 72	6 72	6 72	6 72	6 72
45 48	45 48	36 08	36 08	36 08
105 00	103 00	102 00	102 00	102 00
105 48	148 48	138 08	138 08	138 08
18 00	18 00	17 00	17 00	16 00
1 80	1 80	1 70	1 70	1 60
19 80	19 80	18 70	18 70	17 60
00 5				
2 08	2 08	1 48	1 48	1 48
21 88	21 88	20 18	20 18	19 08
18 44	18 44	10 74	10 74	11 84
14 26	14 26	14 26	14 26	14 26
90 22	88 22	87 22	87 22	87 22
45 48	45 48	36 08	36 08	36 08
43 40	43 40	34 60	34 60	34 60

6		7		8		9		10		31		Total in 24-hour Sec. Feet	REMARKS
6	10	5	82	5	50	5	28	4	90	7	88		
16		16		15		15		15		18			
2	72	2	70	2	70	2	70	2	62	2	76		
2	70	2	68	2	67	2	67	2	67	2	79		
16	26	16	26	15	19	15	19	15	19	25	66		
13	10	11	90	11	90	11	90	11	90	13	10		
6	72	6	72	6	72	6	72	6	72	6	72		
36	08	34	88	33	81	33	81	33	81	45	48		
102	00	100	00	100	00	100	00	94	00	105	00		
138	08	134	88	133	81	133	81	127	81	150	48		
16	00	16	00	15	00	15	00	15	00	18	00		
1	60	1	60	1	50	1	50	1	50	1	80		
17	60	17	60	16	50	16	50	16	50	19	00		
00	+	-	-	-	-	-	-	-	-	-	-		
1	48	1	88	1	61	1	61	1	61	2	08		
19	08	19	48	18	11	18	11	18	11	21	88		
11	84	11	44	11	74	11	74	11	74	18	44		
14	26	13	06	13	06	13	06	13	06	14	26		
87	22	85	22	85	22	85	22	79	22	90	22		
36	08	34	88	33	81	33	81	33	81	45	48		
34	60	33	00	32	20	32	20	32	20	43	40		



26 9 is out	27 8 is out	28 7 is out	29	30	11	12	13	14	15
9 22	8 90	8 66	8 40	8 12	4 72	4 45	4 18	3 80	3 58
22	21	20	19	19	14	14	13	13	13
2 90	2 90	2 78	2 78	2 76	2 56	2 56	2 56	2 56	2 56
2 81	2 81	2 79	2 79	2 79	2 67	2 67	2 67	2 67	2 67
27 58	26 94	25 66	25 66	25 66	15 19	15 19	15 19	15 19	15 19
13 10	13 10	13 10	13 10	13 10	11 90	11 90	11 90	11 90	11 90
6 72	6 72	6 72	6 72	6 72	6 72	6 72	6 72	6 72	6 72
47 40	46 76	45 48	45 48	45 48	33 81	33 81	33 81	33 81	33 81
116 00	116 00	106 00	106 00	105 00	89 70	89 70	89 70	89 70	89 70
163 40	162 76	151 48	151 48	150 48	123 51	123 51	123 51	123 51	123 51
22 00	21 00	20 00	19 00	19 00	14 00	14 00	13 00	13 00	13 00
2 26	2 10	2 00	1 90	1 90	1 40	1 40	1 30	1 30	1 30
24 20	23 10	22 00	20 90	20 90	15 40	15 40	14 30	14 30	14 30
60 4	-	-	-	-	-	-	-	-	-
1 80	1 16	2 08	2 08	2 08	1 61	1 61	1 61	1 61	1 61
26 00	24 26	24 08	22 98	22 98	17 01	17 01	15 91	15 91	15 91
16 24	17 36	16 24	17 34	17 34	12 84	12 84	13 94	13 94	13 94
14 26	14 26	14 26	14 26	14 26	13 06	13 06	13 06	13 06	13 06
101 22	101 22	91 22	91 22	90 22	74 92	74 92	74 91	74 91	74 91
47 40	46 76	45 48	45 48	45 48	33 81	33 81	33 81	33 81	33 81
45 60	45 60	43 40	43 40	43 40	32 20	32 20	32 20	32 20	32 20

out

[illegible]



16		17		18		19		20		21	22	23	24	25
11	52	11	39	11	04	10	80	10	60					
28		28		28		27		27						
3	10	3	06	3	06	3	06	3	06					
3	10	3	10	3	10	3	10	3	10					
33	60	33	60	33	60	33	60	33	60					
18	20	18	20	18	20	18	20	18	20					
10	60	10	60	10	60	10	60	10	60					
62	40	62	40	62	40	62	40	62	40					
133	00	130	00	130	00	130	00	130	00					
195	46	192	46	192	46	192	46	192	46					
28	00	28	00	28	00	27	00	27	00					
2	80	2	80	2	80	2	70	2	70					
30	80	30	80	30	80	29	70	29	70					
15	40	15	40	15	40	14	85	14	85					
1	40	1	00	1	00	1	40	1	70					
47	60	47	20	47	20	45	95	46	25					
8	95	8	95	8	95	8	95	8	95					
14	95	15	35	15	25	16	60	16	30					
118	22	115	22	115	22	115	22	115	22					
62	40	62	40	62	40	62	40	62	40					
85	00	85	00	85	00	85	00	85	00					
24 <sub>6</sub> <sup>00</sup>		23 <sup>60</sup>		23 <sup>60</sup>		24 <sup>00</sup>		24 <sup>30</sup>						

26	27	28	29	30	11	12	13	14	15
					12 48	12 20	12 08	11 94	11 74
					2 8	2 8	2 8	2 8	2 8
					3 10	3 10	3 10	3 10	3 10
					3 08	3 09	3 09	3 09	3 10
					33 60	33 60	33 60	33 60	33 60
					18 20	18 20	18 20	18 20	18 20
					10 60	10 60	10 60	10 60	10 60
					62 40	62 40	62 40	62 40	62 40
					133 00	133 00	133 00	133 00	133 00
					195 40	195 40	195 40	195 40	195 40
					28 00	28 00	28 00	28 00	28 00
					2 80	2 80	2 80	2 80	2 80
					30 80	30 80	30 80	30 80	30 80
					15 40	15 40	15 40	15 40	15 40
					1 40	1 50	1 20	1 20	1 40
					47 60	47 70	47 40	47 40	47 60
					8 95	8 95	8 95	8 95	8 95
					14 95	14 85	15 15	15 15	14 95
					118 22	118 22	118 22	118 22	118 22
					62 40	62 40	62 40	62 40	62 40
					82 00	83 50	83 50	83 50	85 00
					21 00	22 60	22 30	22 30	24 00 <sub>5</sub>



6		7		8		9		10 <i>start 50%</i>		31	Total in 24-hour Sec. Feet		REMARKS
13	60	13	32	13	08	12	94	12	76				
3	2	3	2	3	1	3	0	2	9				
3	10	3	10	3	12	3	12	3	10				
3	08	3	09	3	08	3	09	3	08				
34	29	34	29	34	29	34	29	34	29				
18	20	18	20	18	20	18	20	18	20				
10	60	10	60	10	60	10	60	10	60				
63	09	63	09	63	09	63	09	63	09				
133	00	133	00	135	00	135	00	133	00				
196	09	196	09	198	09	198	09	196	09				
32	00	32	00	31	00	30	00	29	00				
3	20	3	20	3	10	3	00	2	90				
35	20	35	20	34	10	33	00	31	90				
14	08	14	08	13	64	13	20	18	95				
179		89		79		29		1	49				
51	07	50	17	48	53	47	49	40	34				
9	64	9	64	9	64	9	64	9	64				
11	48	12	38	14	02	15	06	13	21				
118	22	118	22	120	22	120	22	118	22				
63	09	63	09	63	09	63	09	63	09				
82	00	83	50	82	00	83	50	82	00				

20 70 21 30 19 70 21 76 20 40

	1	2	3	4	5
	13 1500+				
	14 72	14 46	14 24	14 04	13 82
	38	37	36	35	38
	3 10	3 10	3 10	3 08	3 08
	3 10	3 12	3 10	3 10	3 10
	37 11	37 11	34 29	34 29	34 29
	19 30	19 30	19 30	19 30	19 30
	10 60	10 60	10 60	10 60	10 60
	62 01	62 01	64 19	64 19	64 19
	133 00	133 00	135 00	131 00	131 00
	200 01	200 01	197 19	195 19	195 19
	38 00	37 00	36 00	35 00	33 00
	3 80	3 70	3 60	3 50	3 30
	41 80	40 70	39 60	38 50	36 30
	16 72	16 28	15 84	15 40	14 52
	1 71	1 41	1 19	1 89	1 89
	60 23	58 39	56 63	54 79	51 71
	11 14	12 46	9 64	9 64	9 64
	10 12	10 12	10 12	10 12	11 94
	112 84	113 36	115 12	114 96	116 22
	67 01	67 01	64 19	64 19	64 19
	85 00	88 20	85 00	85 00	85 00

19 70 22 60 22 00 21 70 21 70



Month of Aug 20 14

NOTE — Figures to be given in cubic feet per second for 24-hour periods, or 24-hour second feet. Give name of owner of water rights, not tenant.

Name of Present Water Right Owner	IDWR WATER RIGHT IDENTIFICATION NO.	Amount Second Feet (CFS)	REMARKS
Reservoir Staff			
Jumbo CFS			
Lake Irrig Conal			
Below Conal			
Total Used			
West Side			
Spink & Barker			
Mahala			
Sub total			
add lake Conal			
Total Used			
Total Available			
Jumbo			
10% added			
Total Inlet Flow			
add Old Rts Storage			
River Pickup			
Sub total			
Cruzen			
Cruickshank			
Lake Irrigation			
Flow 3 ditches			
Less Guggle			

2 Rentall Poll

### Time of Water Master and Assistants

Month of \_\_\_\_\_

[illegible]

## REMARKS

## GUIDELINES FOR RECORDKEEPING

1. Use the official daily record book. Do not use substitutes. If you prefer to record notes in another text, transcribe to the daily record book immediately.
2. Use a separate daily record book for each stream you administer. Do not mix the users of several streams into one daily record.
3. If the water being delivered is measured and the headgate set on a particular day, record the flow in cubic feet per second in the proper grid space. If water diverted at a particular diversion is not measured on a given day, but you believe that water continues to be delivered without a change in the flow or headgate setting, place an "A" in the grid space for that day. The "A" represents that the previous flow and headgate setting is "assumed." An "A" must always be preceded by an actual numerical flow rate.
4. If the water being delivered is not actually measured, enter an "E" in the fraction portion of the grid space for the particular day that the flow rate is estimated. An "E" should always follow an estimated numerical flow that is observed and set in the field.
5. If water is not being delivered, enter a "0" (zero) in the proper grid space. If the water right is cut off because of unavailability of water, a zero may be entered in the grid space corresponding to the day the right could no longer be satisfied, and all subsequent days when water is not deliverable may be designated with a horizontal line through the grids that represent the days of nondelivery.
6. A blank grid space means that the watermaster has no knowledge of the amount of water being delivered on that day. A grid should never be blank while the watermaster is delivering water.
7. If possible, please list the water right no. in the daily record rather than a number assigned by the district or by the decree. Future users of the records will likely look for a water right reference.
8. Record unusual or noteworthy happenings. For instance, if a senior downstream right holder's water right is no longer available because the creek dries up upstream, and junior upstream rightholders are allowed to divert remaining water upstream, this event should be recorded on the day it happens.



### IDWR OFFICES

#### State – 327-7900

1301 North Orchard Street  
Boise, ID 83706  
Fax 327-7866

### REGIONAL OFFICES

#### Eastern – 525-7161

900 N. Skyline Drive, Suite A  
Idaho Falls, ID 83402-1718  
Fax 525-7177

#### Northern – 769-1450

1910 Northwest Blvd., Suite 210  
Coeur d'Alene, ID 83814-2615  
Fax 769-1454

#### Southern – 736-3033

1341 Fillmore Street, Suite 200  
Twin Falls, ID 83301-3380  
Fax 736-3037

#### Western – 334-2190

2735 Airport Way  
Boise, ID 83705-5082  
Fax 334-2348

Costs associated with this publication are available  
from the Idaho Department of Water Resources  
in accordance with Section 60-202, Idaho Code  
IDWR, 1,500 11/03, 58009

### PROPERTY OF THE STATE OF IDAHO

Form No. 300-W

### WATERMASTER'S

# DAILY RECORD

Stream Lake Fork Creek  
Water District 65-K  
Month of Aug & Sep, 20 14  
Watermaster John Leedom  
P.O. Address 370 Knights Rd  
McCall ID 83638

After the irrigation season the Watermaster  
must forward this book or a suitable report of  
the records in this book, and the annual  
Watermaster report to the appropriate IDWR  
Regional Office.

SCANNED

MAY 08 2015

OCT 03 2014

WATER RESOURCES  
WESTERN REGION

If this book is lost, the finder will please  
return it to the Watermaster of the district,  
as it contains valuable records.



Name of Present  
OwnerWATER RIGHT  
IDENTIFICATION NO.Amount  
Second  
Feet (CFS)

1

2

3

4

5

18 44	18 52	18 58	18 68	18 72
269	264	260	255	235
* 2 88	2 96	3 06	3 06	3 02

40 00	34 99	34 99	34 99	34 99
18 60	18 60	18 60	19 30	19 30
15 60	15 60	13 40	13 40	13 40
24 20	69 19	66 90	62 69	62 69

114 00	121 00	130 00	130 00	122 00
188 20	190 19	196 99	197 64	194 69

269 00	264 00	260 00	255 00	235 00
--------	--------	--------	--------	--------

26 90	26 40	26 00	25 50	23 50
-------	-------	-------	-------	-------

285 90	290 40	286 00	280 50	258 50
--------	--------	--------	--------	--------



6	7	8	9	10	31	Total in 24-hour Sec. Feet	REMARKS
18 72	18 74	18 70	18 52	18 56			
212	196	187	167	148			
3 00	3 00	3 02	3 04	3 10			
3 02	3 07	3 13	3 13	3 11			
37 83	37 83	40 74	40 74	40 74			
19 30	19 30	21 10	21 10	21 10			
13 40	13 40	16 10	16 10	16 10			
70 53	70 53	77 94	77 94	77 94			
125 00	125 00	127 00	128 00	133 00			
195 53	195 53	204 94	205 94	210 94			
212 00	196 00	187 00	167 00	148 00			
21 20	19 60	18 70	16 70	14 80			
233 20	215 60	205 70	183 70	162 80			
1 73	2 34	2 34	1 44				
217 33	208 04	186 04	164 24				
10 12	11 92	11 92	11 92				
		2 30	29 10				
70 53	77 94	77 94	77 94				
80 50	89 80	89 80	86 60				
11 20	14 20	14 20	10 10				

26	27	28	29	30	11	12	13	14	15
18 08	18 18	18 22	18 32	18 28	18 42	18 24	18 05	17 94	17 82
365	371	300	298	283	137	125	112	103	98
3 00	3 04	3 04	2 96	2 96	3 12	3 12	3 12	3 12	3 12
					3 14	3 15	3 15	3 15	3 12
42 22	42 22	40 00	40 00	40 00	40 24	40 24	40 24	40 24	40 24
20 00	20 00	18 60	18 60	18 60	19 30	19 30	19 30	19 30	19 30
15 60	15 60	15 60	15 60	15 60	16 10	16 10	16 10	16 10	12 60
					76 14	76 14	76 14	76 14	72 64
125 00	128 00	128 00	121 00	121 00	135 00	135 00	135 00	135 00	135 00
					211 14	211 14	211 14	211 14	207 64
					137 00	125 00	112 00	103 00	98 00
					13 20	12 50	11 20	10 30	9 80
					150 70	137 50	123 20	113 30	107 80
					1 64	2 84	1 54	1 54	3 24
					152 34	140 34	124 24	114 84	111 04
					10 12	10 12	10 12	10 12	10 12
					43 00	55 00	70 60	80 50	80 80
					76 14	76 14	76 14	76 14	72 64
					91 40	93 00	94 60	94 60	88 20
					16 90	19 20	20 00	20 00	18 80



17	18	19	20	21	22	23	24	25	
			full storage						
17 64	17 52	17 34	17 18	16 90	17 28	17 40	17 58	17 72	17 88
89	83	75	70	64	347	359	362	377	383
3 12	3 14	3 14	3 14	3 14	3 04	3 02	3 02	3 02	3 02
3 16	3 15	3 15	3 16	3 15					
40 24	40 24	40 24	40 24	38 54	46 26	46 26	46 26	46 26	46 26
19 30	19 30	19 30	19 30	19 30	19 30	19 30	20 00	20 00	20 00
12 60	12 60	12 60	12 60	12 60	15 60	15 60	15 60	15 60	15 60
72 64	72 64	72 64	72 64	70 44					
135 00	137 00	137 00	137 00	137 00	128 00	127 00	127 00	127 00	127 00
207 64	209 64	209 64	209 64	207 44					
89 00	83 00	75 00	70 00	64 00					
8 30	8 30	7 50	7 00	6 40					
97 90	91 30	82 50	72 00	70 40					
29 37	27 34	24 75	23 10	21 12					
2 34	1 64	1 34	2 34	1 24					
129 61	120 33	108 59	102 44	93 26					
10 12	10 12	10 12	10 12	10 12					
62 23	73 57	85 25	91 40	98 38					
72 64	72 64	72 64	72 64	70 44					
94 60	93 00	93 00	94 60	93 00					

24 30 22 00 21 70 24 30 24 30



16	17	18	19	20	21	22	23	24	25
16 95	17 00	17 02	17 06	17 10	16 76	16 60	16 42	16 28	16 06
356	322	286	266	328	62	59	59	57	52
3 10	3 06	3 06	3 00	3 04	3 12	3 12	3 12	3 12	3 12
					3 15	3 15	3 15	3 14	3 12
45 22	45 22	45 22	45 22	45 22	38 54	38 54	38 54	38 54	38 54
18 90	18 90	18 90	19 30	19 30	19 30	19 30	19 30	19 30	19 30
15 60	15 60	15 60	15 60	15 60	12 60	12 60	10 80	10 80	11 80
					70 44	70 44	68 64	68 64	69 64
130 00	130 00	130 00	125 00	128 00	135 00	135 00	135 00	135 00	135 00
					205 44	205 44	203 64	203 64	204 64
					62 00	59 00	59 00	57 00	52 00
					6 20	5 90	5 90	5 70	5 20
					68 20	64 90	64 90	62 70	57 20
					20 46	19 47	19 47	18 81	17 16
					1 74	2 14	1 64	1 84	1 14
					90 40	86 51	86 01	82 00	75 50
					10 12	10 12	10 12	10 12	10 12
					99 24	103 13	101 83	105 49	113 34
					70 44	70 44	68 64	68 64	69 64
					93 00	93 00	93 00	91 40	88 20
					24 30	24 70	26 00	23 60	19 70
					568 AF				15

15	14	13	12	11	30	29	28	27	26	25	24	23	22	21	20	19	18	17	16	15	14	13	12	11	10	9	8	7	6	5	4	3	2	1
15	14	13	12	11	30	29	28	27	26	25	24	23	22	21	20	19	18	17	16	15	14	13	12	11	10	9	8	7	6	5	4	3	2	1

6	7	8	9	10	31	Total in 24-hour Sec. Feet	REMARKS
15 <sup>00</sup>	15 <sup>20</sup>	15 <sup>32</sup>	15 <sup>46</sup>	15 <sup>82</sup>	14 <sup>88</sup>		
650	589	556	5 <sup>65</sup>	611	40		
316	312	316	310	318	310		
					312		
43 <sup>72</sup>	43 <sup>72</sup>	43 <sup>72</sup>	43 <sup>72</sup>	43 <sup>72</sup>	57 <sup>11</sup>		
19 <sup>30</sup>	19 <sup>30</sup>	19 <sup>30</sup>	19 <sup>30</sup>	20 <sup>48</sup>	19 <sup>30</sup>		
15 <sup>80</sup>	15 <sup>80</sup>	16 <sup>70</sup>	16 <sup>70</sup>	16 <sup>70</sup>	12 <sup>66</sup>		
					69 <sup>01</sup>		
<del>138<sup>00</sup></del>	<del>135<sup>00</sup></del>	<del>133<sup>00</sup></del>	<del>133<sup>00</sup></del>	<del>140<sup>00</sup></del>	<del>133<sup>00</sup></del>		
					202 <sup>01</sup>		
					40 <sup>00</sup>		
					4 <sup>00</sup>		
					44 <sup>00</sup>		
					17 <sup>60</sup>		
					2 <sup>51</sup>		
					64 <sup>11</sup>		
					7 <sup>26</sup>		
					10 <sup>12</sup>		
					114 <sup>84</sup>		
					69 <sup>01</sup>		
					88 <sup>20</sup>		

21<sup>70</sup>





Month of

June

20

14

NOTE — Figures to be given in cubic feet per second for 24-hour periods, or 24-hour second feet. Give name of owner of water rights, not tenant.

Name of Present Water Right Owner	IDWR WATER RIGHT IDENTIFICATION NO.	Amount Second Feet (CFS)	REMARKS
Reservoir Staff			
Jumbo CFS			
Lake Irrig Conal			
Below Conal			
Total Used			
West Side			
Spink & Barker			
Mahala			
Sub total			
add lake Conal			
Total Used			
Total Available			
Jumbo			
10% added			
Total Inlet Flow			
add Old Rts Storage			
River Pickup			
Sub total			
Cruzen			
Cruickshank			
Lake Irrigation			
Flow 3 ditches			
Less Gauge			

2 Rental Poll

Month of \_\_\_\_\_

REMARKS

1. Use the official daily record book. Do not use substitutes. If you prefer to record notes in another text, transcribe to the daily record book immediately.
2. Use a separate daily record book for each stream you administer. Do not mix the users of several streams into one daily record.
3. If the water being delivered is measured and the headgate set on a particular day, record the flow in cubic feet per second in the proper grid space. If water diverted at a particular diversion is not measured on a given day, but you believe that water continues to be delivered without a change in the flow or headgate setting, place an "A" in the grid space for that day. The "A" represents that the previous flow and headgate setting is "assumed." An "A" must always be preceded by an actual numerical flow rate.
4. If the water being delivered is not actually measured, enter an "E" in the fraction portion of the grid space for the particular day that the flow rate is estimated. An "E" should always follow an estimated numerical flow that is observed and set in the field.
5. If water is not being delivered, enter a "0" (zero) in the proper grid space. If the water right is cut off because of unavailability of water, a zero may be entered in the grid space corresponding to the day the right could no longer be satisfied, and all subsequent days when water is not deliverable may be designated with a horizontal line through the grids that represent the days of nondelivery.
6. A blank grid space means that the watermaster has no knowledge of the amount of water being delivered on that day. A grid should never be blank while the watermaster is delivering water.
7. If possible, please list the water right no. in the daily record rather than a number assigned by the district or by the decree. Future users of the records will likely look for a water right reference.
8. Record unusual or noteworthy happenings. For instance, if a senior downstream right holder's water right is no longer available because the creek dries up upstream, and junior upstream rightholders are allowed to divert remaining water upstream, this event should be recorded on the day it happens.



## IDWR OFFICES

### State – 327-7900

1301 North Orchard Street  
Boise, ID 83706  
Fax 327-7866

## REGIONAL OFFICES

### Eastern – 525-7161

900 N. Skyline Drive, Suite A  
Idaho Falls, ID 83402-1718  
Fax 525-7177

### Northern – 769-1450

1910 Northwest Blvd., Suite 210  
Coeur d'Alene, ID 83814-2615  
Fax 769-1454

### Southern – 736-3033

1341 Fillmore Street, Suite 200  
Twin Falls, ID 83301-3380  
Fax 736-3037

### Western – 334-2190

2735 Airport Way  
Boise, ID 83705-5082  
Fax 334-2348

Costs associated with this publication are available  
from the Idaho Department of Water Resources  
in accordance with Section 60-202, Idaho Code  
IDWR, 1,500 11/03, 58009

## PROPERTY OF THE STATE OF IDAHO

Form No. 300-W

## WATERMASTER'S

# DAILY RECORD

Stream Lake Fork Creek  
Water District 65-K  
Month of June, July, 20 14  
Watermaster John Leedom  
P.O. Address 370 Knights Rd  
McCall ID 83638

After the irrigation season the Watermaster  
must forward this book or a suitable report of  
the records in this book, and the annual  
Watermaster report to the appropriate IDWR  
Regional Office.

SCANNED

MAY 08 2015

RECEIVED

OCT 03 2014

WATER RESOURCES  
WESTERN REGION

If this book is lost, the finder will please  
return it to the Watermaster of the district,  
as it contains valuable records.



RECEIVED

OCT 03 2014

WATER RESOURCES  
WESTERN REGION

## Lake Fork Water District #65-K 2014 Watermaster Report

No.	Water Right Owner	Water Right No.	2014 Delivery 24 Hr. Sec. Feet	2014 Delivery Charge (\$10 min)	2014 Adopted Budget	2014 Balance Credit or (Debit)
1	Miller, Lucile	65-3178, 3220	286.76	\$ 66.39	\$ 67.00	
2	Bettis, Harry/Cruickshank	65-2955, 3154 Thru 3163,3168, Thru 3171,3179,3182, 9045a	2947.56	\$ 682.48	\$ 643.00	\$ (39.00)
3	Simplot Highland Farms	65-3127	308.16	\$ 71.35	\$ 72.00	
4	Armstrong, Pat	65-3172	171.20	\$ 39.64	\$ 40.00	
5	Conley, Steve	65-3173	64.20	\$ 14.86	\$ 15.00	
6	Colpo, Clint	65-3174	64.20	\$ 14.93	\$ 15.00	
7	Schumaker, Rick	65-3195-3196	222.38	\$ 51.49	\$ 51.00	\$ (1.00)
8	Frazier, Jack	65-3120,3179, 3198	453.50	\$ 105.00	\$ 105.00	
9	Maki, Will	65-3199,3200, 3184,3206,3202 3202, 3207	312.98	\$ 72.46	\$ 69.00	\$ (4.00)
11	Trabert Land & Livestock	65-3205,3207	248.24	\$ 57.47	\$ 58.00	
12	Titcze, George	65-3184A	66.50	\$ 15.39	\$ 15.00	
13	Lindsay, Kasey	65-10538A	60.80	\$ 14.07	\$ 15.00	
14	Teufel Properties LLC.	65-10538B	76.00	\$ 17.59	\$ 16.00	
15	Berheim, Arvin	65-3184B	14.25	\$ 3.29	\$ 10.00	
16	Stewart Louise	65-3184C	11.40	\$ 2.63	\$ 10.00	
17	Truxel, Mike	65-3184D	6.65	\$ 1.53	\$ 10.00	
18	Hatrup, Ed	65-3184D	6.65	\$ 1.53	\$ 10.00	
19	Steve Callan	65-3184E	4.75	\$ 1.09	\$ 10.00	
20	Valdez, Gordon	65-3184F	4.75	\$ 1.09	\$ 10.00	
21	Balsco, James	65-3184G	17.10	\$ 3.95	\$ 10.00	
22	Jenson, Lee	65-3184H	5.70	\$ 1.31	\$ 10.00	
23	Elk Haven Sub	65-3194	219.45	\$ 50.81	\$ 50.00	\$ (1.00)
24	Leedom Mike	65-3194	182.40	\$ 42.23	\$ 42.00	
25	White, Steven	65-3194	94.05	\$ 21.77	\$ 22.00	
26	Traxel, Tyan	65-3211	42.75	\$ 9.89	\$ 10.00	
27	Kessler, Rod	65-3211	51.30	\$ 11.87	\$ 10.00	\$ (2.00)
28	Burgess, Wayne	65-3211	34.20	\$ 7.91	\$ 10.00	
29	Houlihan, Janet	65-3211	8.55	\$ 1.97	\$ 10.00	
30	White Luther	65-3176	144.18	\$ 33.38	\$ 30.00	\$ (3.00)
31	Bettis, Harry/Cruzen	65-2708,2932, 2952,3186,3187	2277.87	\$ 527.42	\$ 515.00	\$ (12.00)
32	Uhrig, Albert	65-3210	140.94	\$ 32.63	\$ 30.00	\$ (2.00)

SCANNED

MAY 08 2015



33	Nissula, James	65-3176	170.00	\$ 39.36	\$ 31.00	\$ (8.00)
34	Right, Steven	65-3166	137.62	\$ 31.86	\$ 27.00	\$ (5.00)
35	Goode, Vernon	65-3164	117.62	\$ 27.23	\$ 24.00	\$ (3.00)
36	Kirk, David	65-3213	46.40	\$ 10.74	\$ 10.00	
37	Kirk, David	65-3213			\$ 10.00	
38	Purdom, Kenneth	65-2700	113.90	\$ 26.37	\$ 26.00	
39	Bettis, Harry	65-3209	288.32	\$ 66.75	\$ 62.00	\$ (4.00)
40	Wendell, Mary	65-3183	106.00	\$ 24.54	\$ 22.00	\$ (3.00)
	Tine Development	65-3185	81.09	\$ 18.77	\$ 20.00	
41	KDB LLC.	65-3185	24.91	\$ 5.76	\$ 10.00	
42	Nahas, Ron	65-3210	212.00	\$ 49.38	\$ 43.00	\$ (6.00)
43	Lake Irrigation	65-3218	14534.64	\$ 3,365.39	\$ 3,176.00	\$ (189.00)
44	Wolfe Ranches	65-3180	160.00	\$ 37.04	\$ 35.00	\$ (2.00)
45	Miller, Thomas	65-11282	18.00	\$ 4.16	\$ 10.00	
46	West Roseberry 150	65-2707	100.00	\$ 23.15	\$ 24.00	
47	Doboer, Judd	65-2729	225.00	\$ 52.09	\$ 50.00	\$ (2.00)
48	Mcmanus, John	65-2768	11.00	\$ 2.54	\$ 10.00	
49	Royal Fork	65-7002	80.00	\$ 18.52	\$ 20.00	
			24975.92	\$ 5,783.00	\$ 5,598.00	\$ 288.00

107 Days at \$45.00 per day	\$ 4,815.00
Other Expenses	\$ 968.00
Total Cost	\$ 5,783.00
Total 24 Hr. Sec. Feet Delivered	24,975.92
Cost per 24 Hr. Sec. Feet Delivered	0.0231543



State of Idaho

## DEPARTMENT OF WATER RESOURCES

Western Region • 2735 Airport Way • Boise, Idaho 83705-5082

Phone: (208) 334-2190 • Fax: (208) 334-2348 • Website: [www.idwr.idaho.gov](http://www.idwr.idaho.gov)

C.L. "BUTCH" OTTER  
Governor

GARY SPACKMAN  
Director

October 10, 2014

SHIRLEY M FLORENCE  
PO BOX 3126  
MCCALL ID 83638-6126

**RE: 2014 Watermaster Report- 65-K Lake Fork Water District**

Dear Secretary & Watermaster:

Enclosed are copies of the Watermaster's Annual Report for the 2014 irrigation season. The report has been approved by this Department in conformity with Idaho Code Sections 42-610 thru 42-615. **The Watermaster should be compensated for services conforming to the report.**

Feel free to contact me if you have any questions, phone 208-334-2190.

Sincerely,

A handwritten signature in black ink, appearing to read 'Jennifer Strange', followed by a long, horizontal, slightly wavy line that extends to the right.

Jennifer Strange  
Office Specialist II

Enclosure

CC: Letter to John Leedom

SCANNED

MAY 08 2015





State of Idaho

## DEPARTMENT OF WATER RESOURCES

Western Region • 2735 Airport Way • Boise, Idaho 83705-5082

Phone: (208) 334-2190 • Fax: (208) 334-2348 • Website: [www.idwr.idaho.gov](http://www.idwr.idaho.gov)

C.L. "BUTCH" OTTER  
Governor

GARY SPACKMAN  
Director

May 19, 2014

Sam Larrondo, EIT  
Crestline Engineers  
323 Dienhard LN Suite C  
PO Box 2330  
McCall ID 83638

### **RE: Proposed Moss Irrigation Pond**

Dear Mr. Larrondo:

Thank you for your letter of May 8<sup>th</sup> regarding the proposed pond on the Moss property. Our office has reviewed your proposal and forward the following comments and matters that need to be addressed:

The Lake Fork Creek and tributaries are over appropriated; that is water right allocations far exceed the water available in the creek, see right summary. Because of the shortage, junior priority date natural flow water rights are curtailed annually to prevent injury to senior right holders. The water delivered by the Lake Irrigation District (Little Payette Lake) and the Water district Rental Pool provides supplemental water to shareholders to compensate for the shortage.

The shallow groundwater in the proposed pond location is a direct tributary and considered Lake Fork Creek water. A pond excavation exposing shallow groundwater would be viewed as a creek diversion and new beneficial use of water. The water rights held by your client do not authorize the storage of water; therefore, a new storage water right is required.. A new storage appropriation would require the applicant submit convincing evidence and data to show that injury would not be caused to right holders. This is not likely as junior priority creek right holders already face annual curtailed due to lack of creek natural flow.

If the irrigation pumping capacity exceeds the ability of the conveyance ditch to deliver the quantity of water required, a small regulation/pumping pond can be part of the irrigation system. Yes, it is acceptable to irrigate portions of the parcel by gravity/flood irrigation. However due to the proposed location, the following must addressed:


- The pond excavation cannot expose/encounter shallow groundwater. The map enclosed indicates there may already be standing water near the proposed pond location. This would be prohibitive.
- Water stored in the pond would have to come from diversions under your water rights and district shares.
- The pond would have to be actively used for regulation/pumping only during the irrigation season. It could not be refilled from 09/01 to 04/01.

Page 2.  
Crestline

- Water would have to be diverted out of the West Side Ditch into the pond. The ditch cannot flow through the pond.
- Determined the pond site location is not classified as a wetland-Corps of Engineers.
- Present the pond need and specifications to the Lake Fork Water District Watermaster and West Fork Ditch waterusers for comments and approval.

Should you have questions, please contact me at the Western Regional Office, phone 334-2190.

Sincerely,



John Westra, Manager

Cc: J. Leedom, Watermaster

Enclosure: Lake Fork Creek water right summary.





May 8, 2014

Idaho Department of Water Resources  
Attn: John Westra  
2735 Airport Way  
Boise, ID 83705

**Subject: Confirmation regarding Proposed Regulation Pond for Irrigation in Lake Fork, Idaho**

Dear John,

This letter is a written request for confirmation regarding a phone conversation that we had in April, 2014 about a proposed regulation pond for irrigation in Lake Fork, Idaho that is scheduled to proceed in the upcoming weeks. Below I have outlined the proposed project and our understanding of the project. If you would respond to this letter with a small confirmation response of our understanding of the permitting requirements of the project either in e-mail or on paper, we and our client would be grateful.

The proposed regulation pond for irrigation is located at 65 Elk Haven Lane, Lake Fork, Idaho on parcel no. RP17N03E145855 and is owned by Shawn and Trina Moss. This parcel is approximately 39 acres and has a water right (no. 65-22967) of 0.79 cfs to be used for irrigation. The Mosses also own the adjacent parcel (RP17N03E157655) of approximately 74.5 acres that has a water right (no. 65-22969) of 1.12 cfs to be used for irrigation. The legal description for the project is the SW 1/4 of Section 14 and the SE 1/4 of Section 15, T.17N, R.3E., BM, Valley County, Idaho.

Attached with this letter is a print-out from the Idaho Department of Water Resources website showing the referenced water rights. The print out does not reflect the current ownership but it has been communicated to Crestline Engineers, Inc. that the Mosses have filed paperwork for the change in ownership of the water rights.

Historically, the properties have been flood irrigated from the West Side Lake Fork Ditch. The proposed project is to dig a regulation pond on the edge of an existing area of high ground water and irrigate the properties by a pumped system necessary but also have the option to irrigate using the current flood irrigation system. Drawings attached with this letter show the intent of the project and are provided for your records.

Based on conversations Crestline Engineers has had with you regarding this project, the proposed pond cannot have a footprint larger than 10,000 S.F. (equivalent to 100'x100'). It is our understanding that a pond larger than 10,000 S.F. would require a new water right, that would likely be denied, to account for evaporation lost by the pond.

As we understand it, approval/notification is not required to build the 10,000 S.F. regulation pond but we are hoping to receive confirmation from you about our understanding of the project.

May 8, 2014

Please reply to this letter with a short letter or e-mail acknowledging the project and that our understanding of the project is correct and that it is allowed and/or what additional steps must be taken to proceed.

If you have any questions regarding this project or would like additional information please contact Sam Larrondo of Crestline Engineers, Inc. by phone ((208) 634-4140) or e-mail (slarrondo@crestline-eng.com).

Respectfully submitted by,

**Crestline Engineers, Inc.**

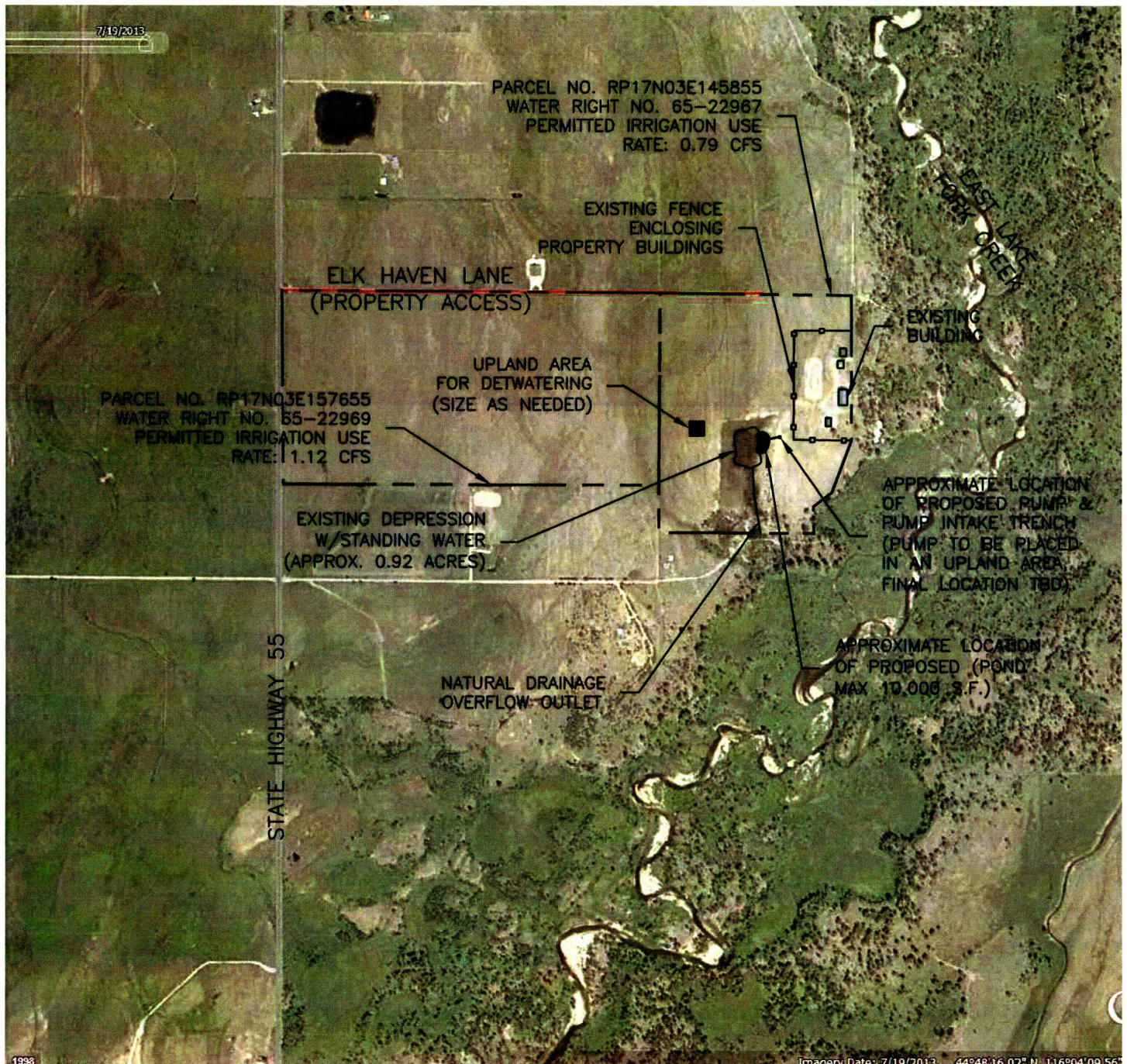


Sam Larrondo, E.I.T.  
Associate Engineer

Enclosures:

1. Moss Irrigation Pond (4 total)
2. Moss Irrigation Pond, Current IDWR Water Rights Print Out (6 Pages)





NORTH  
SCALE: 1" = 1000'

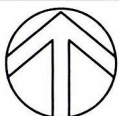
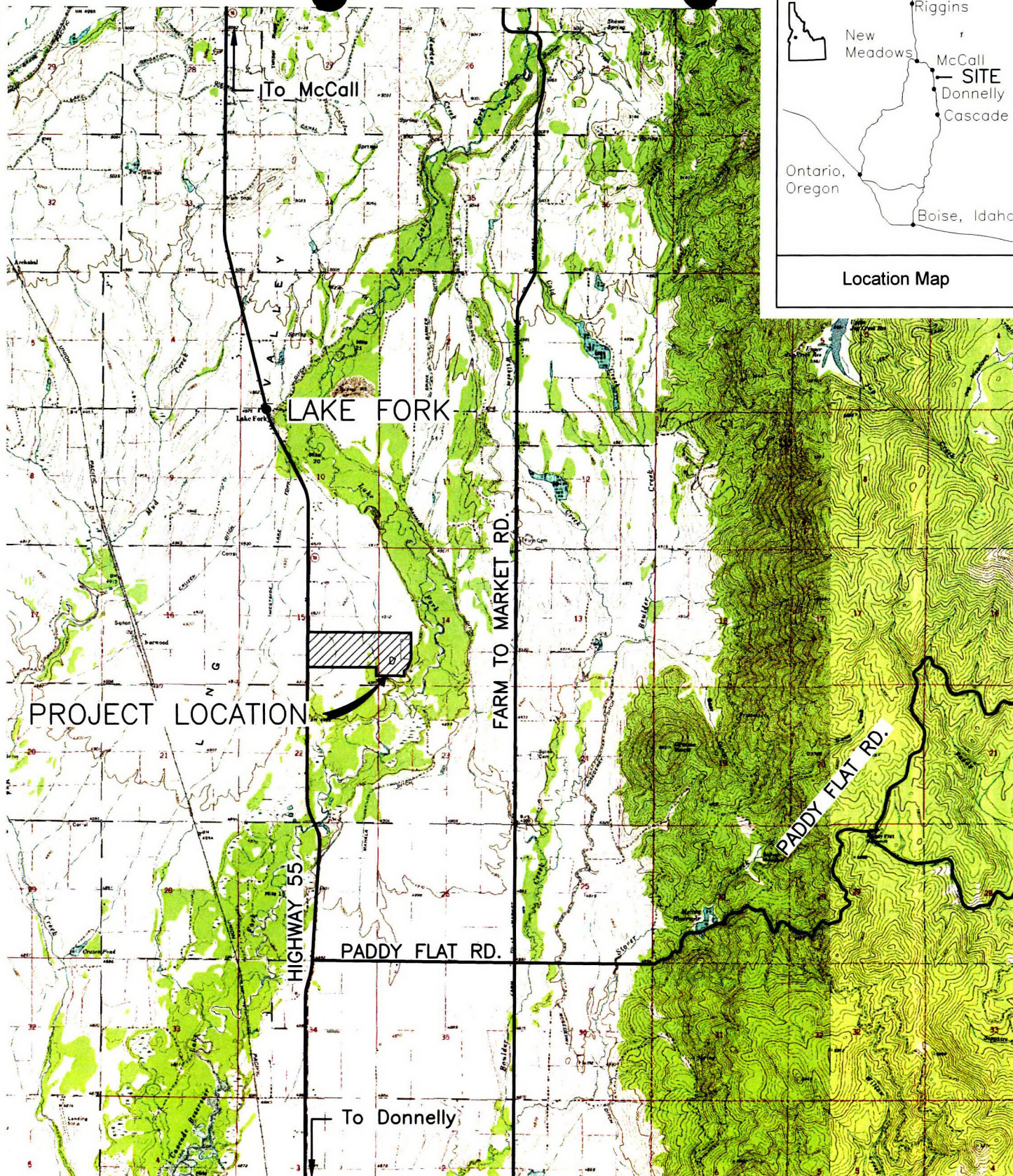


323 DEINHARD LANE, SUITE C · PO BOX 2330  
McCALL, IDAHO 83638  
208.634.4140 · 208.634.4146 FAX

## MOSS IRRIGATION POND FIGURE 2, C-1

PROJECT	14009	DRAWN	FIGURE NO.
DATE	5/8/2014	SSL	2 OF 4





NORTH  
SCALE: 1" = 5000'



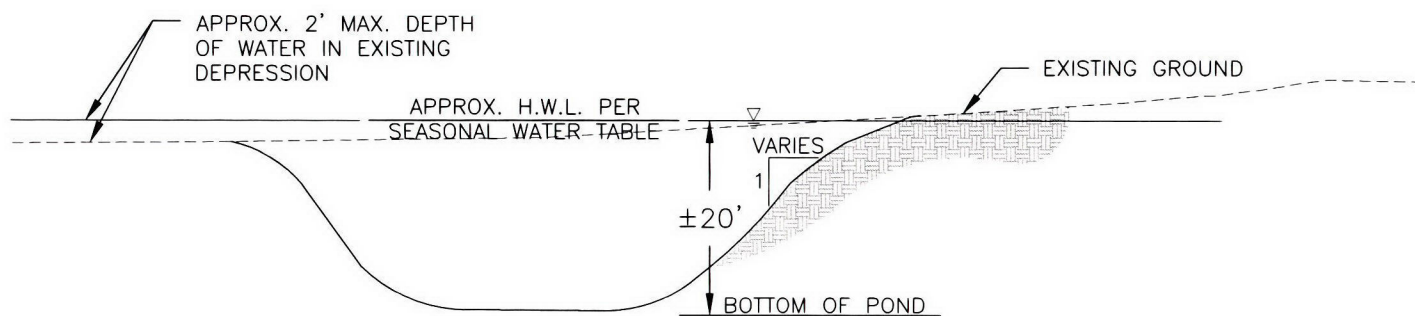
**CRESTLINE**  
ENGINEERS

323 DEINHARD LANE, SUITE C · PO BOX 2330  
McCALL, IDAHO 83638  
208.634.4140 · 208.634.4146 FAX

**MOSS IRRIGATION POND  
FIGURE 1, VICINITY MAP**

PROJECT	14009	DRAWN	FIGURE NO.
DATE	5/8/2014	SSL	1 OF 4

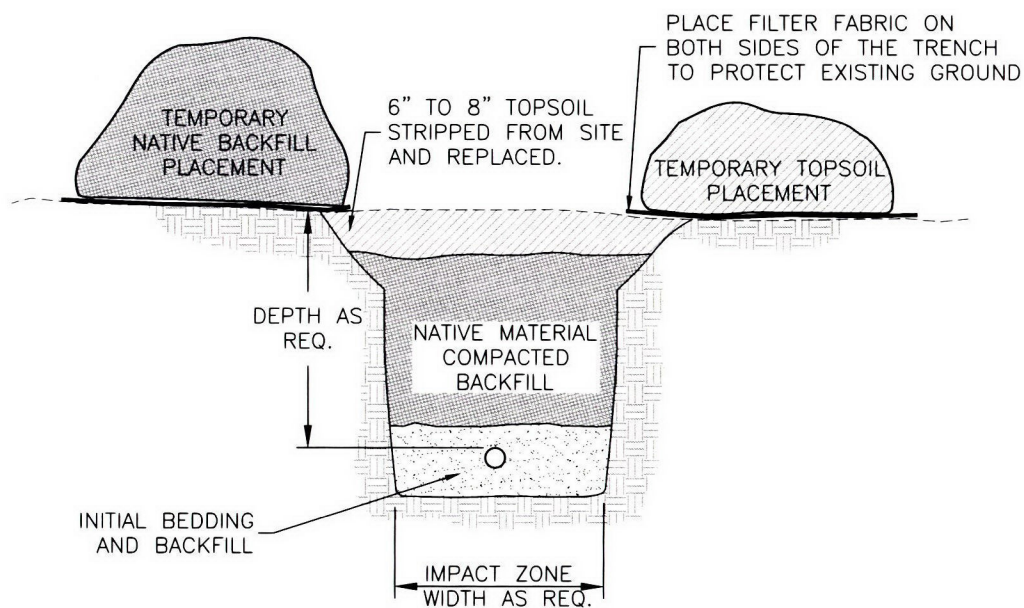




**A** POND EXCAVATION DETAIL  
TYP SCALE 1" = 20'

**NOTES:**

1. POND SLOPES TO BE CREATED USING MACHINE TO EXCAVATE MATERIAL ONLY. GRADING, PUSHING AND FINE GRADING OF MATERIAL IS NOT ALLOWED.
2. EXCAVATED MATERIAL TO BE HAULED TO AN ON SITE UPLAND LOCATION. RESEEDING OF ALL STOCKPILED MATERIAL SHOULD BE COMPLETED IMMEDIATELY AFTER PROJECT CONSTRUCTION.
3. TEMPORARY DEWATERING WILL BE COMPLETED BY THE CONTRACTOR AS NECESSARY DURING EXCAVATION. WATER WILL BE PUMPED TO A NON-WETLAND AREA AND INTO A STRAW BALE SEDIMENT TRAP W/SILT FENCE PERIMETER OR A FILTER/DEWATERING BAG AS DETERMINED BY THE CONTRACTOR.
4. ALL CONSTRUCTION METHODS WILL MINIMIZE IMPACTS TO THE GREATEST EXTENT POSSIBLE.

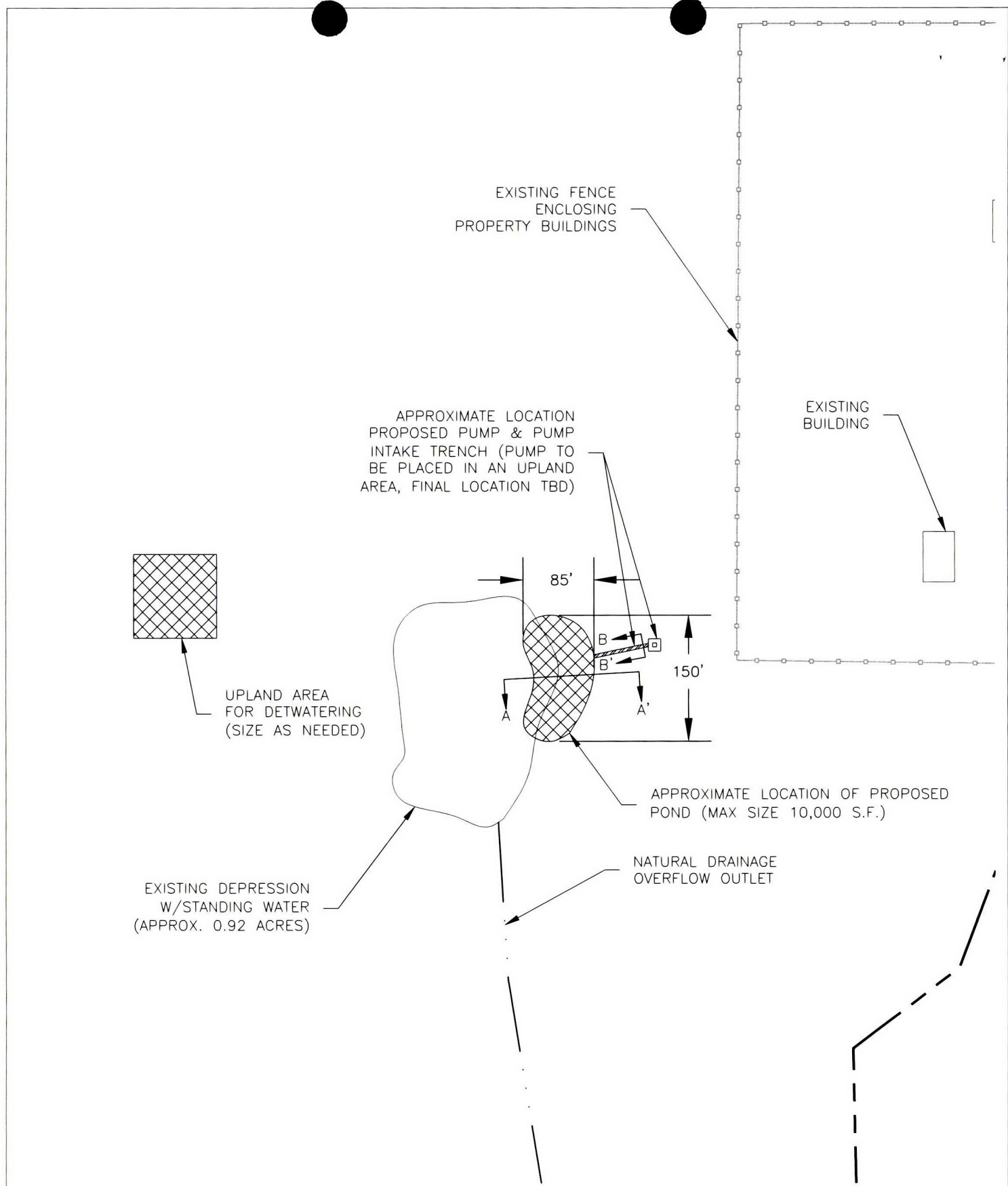


**B** TEMPORARY TRENCH DETAIL FOR PUMP INTAKE PIPE  
TYP NOT TO SCALE

**CRESTLINE**  
ENGINEERS  
323 DEINHARD LANE, SUITE C · PO BOX 2330  
McCALL, IDAHO 83638  
208.634.4140 · 208.634.4146 FAX

**MOSS IRRIGATION POND  
TYPICAL SECTION DETAILS**

PROJECT	14009	DRAWN	FIGURE NO.
DATE	5/8/2014	SSL	4 OF 4



NORTH  
SCALE: 1" = 150'

**CRESTLINE**  
ENGINEERS

323 DEINHARD LANE, SUITE C · PO BOX 2330  
McCALL, IDAHO 83638  
208.634.4140 · 208.634.4146 FAX

MOSS IRRIGATION POND  
FIGURE 3, C-2

PROJECT	14009	DRAWN	FIGURE NO.
DATE	5/8/2014	SSL	3 OF 4



## 5/15/2014

**IDAHO DEPARTMENT OF WATER RESOURCES**  
**Proof Report**

5/15/2014

**Dates and Other Information**

Decreed Date: 10/26/2007  
Civil Case Number: 39576  
Judicial District: FIFTH  
Water District Number: 65K  
Mitigation Plan: False

**Combined Use Limits**

N/A

**Element Reviewed/Verified Dates:**

<u>Element</u>	<u>Last Reviewed Date</u>	<u>Reviewer</u>	<u>Last Verified Date</u>	<u>Verifier</u>	<u>Status</u>
Priority Date	4/13/2006	dshaff			Closed
POD	4/13/2006	dshaff			Closed
Source	4/13/2006	dshaff			Closed
POU	4/13/2006	dshaff			Closed
Use	4/13/2006	dshaff			Closed
Season	4/13/2006	dshaff			Closed
Quantity	4/13/2006	dshaff			Closed
Summary	4/13/2006	dshaff	4/13/2006	dshaff	Closed

**Verification Log**

<u>Element</u>	<u>Date</u>	<u>User</u>	<u>Log Text</u>
General	4/13/2006	dshaff	(No) 1. Should this water use have been included in a later court decree of the water rights from this source? (Yes) 4. Is the basis of claim decree or license? (Yes) 5. Does the decree or license have a Priority Date? (Yes) 6. Did the Claimant claim the decreed or licensed Priority Date ? (Yes) 15. Is the basis of claim coded correctly? (No) 16. Is a Priority Date remark and/or condition required?
POD	4/13/2006	dshaff	Updated shape
POD	4/13/2006	dshaff	(Yes) 1. Is the basis of this claim a Decree or License? (Yes) 4. Does the Decree or License have a POD? (Yes) 5. Can the claimed POD be verified using the water right file? (No) 10. Is a POD remark and/or condition required?
Source	4/13/2006	dshaff	(Yes) 1. Is the basis of claim Decree or License? (Yes) 4. Does the Decree or License have a source? (Yes) 5. Can the claimed source be verified using the water right file? (No) 11. Is a Source remark and/or condition required?
POU	4/13/2006	dshaff	(Yes) 1. Is the basis of this claim a Decree or License? (Yes) 2a. Is the POU required? (Yes) 5. Does the Decree or License have a POU? (Yes) 6. Can the claimed POU be verified using the water right file? (No) 14. Is a POU remark and/or condition required?
POU	4/13/2006	dshaff	Updated shape for Active POU
Use	4/13/2006	dshaff	(Yes) 1. Is the basis of this claim a Decree or License? (Yes) 4. Does the Decree or License have a Purpose of Use? (Yes) 5. Can the claimed Purpose of Use be verified using the water right file? (No) 13. Is a Purpose of Use remark and/or condition required?



IDAHO DEPARTMENT OF WATER RESOURCES  
Proof Report

5/15/2014

Season	4/13/2006	dshaff	(Yes) 1. Is the basis of claim Decree or License? (Yes) 4. Does the Decree or License have a Period of Use? (Yes) 5. Can the claimed Period of Use be verified using the water right file? (Yes) 14. Is irrigation claimed as a Purpose of Use? (No) 16. Is the Period of Use on the decree, license or transfer shorter on either the start date or end date than allowable under current IDWR standards? (No) 18. Is a Period of Use remark and/or condition required?
Quantity	4/13/2006	dshaff	(Yes) 1. Is the basis of this claim a Decree or License? (Yes) 4. Does the Decree or License have a diversion rate and/or volume? (Yes) 5. Can the claimed diversion rate and/or volume be verified using the water right file? (No) 8. Does the parent right have an annual diversion volume limit? (No) 9. Is the source Groundwater and does the purpose of use require a diversion volume limit? (No) 11. Has a diversion volume limit been established by a decree, license or transfer for this water use? (No) 12. Is a Quantity remark or condition required?
Summary	4/13/2006	dshaff	(Yes) 1. Is the basis of this claim a Decree, License, Permit, Application or Posted Notice? (No) 2. Does any evidence indicate a five year period of continuous nonuse occurred that could result in recommending forfeiture or partial forfeiture? (No) 5. Does this right have any combined use limits with other rights? (Yes) 6. Is an additional remark and/or condition required? (Yes) 7. Would you like to view the recommended right? (Yes) 8. Is this a split or combined right? (No) 9. Do you have documents you would like to attach or link to the file? (Yes) 10. Would you like to set the verification date?

**SubCase:**

N/A

**Water Supply Bank:**

N/A

## 5/15/2014

<u>Owner Type</u>	<u>Name and Address</u>
Current Owner	STEPHAN A WHITE PO BOX 1150 BEND, OR 97709 (541)389-9385

**Status:** Active

**Tributary**  
NORTH FORK PAYETTE RIVER

<u>From</u>	<u>To</u>	<u>Diversion Rate</u>
05/01	09/15	1.120 CFS
<b>Total Diversion</b>		1.120 CFS

LAKE FORK                      SENE                      Sec. 3, Twp 17N, Rge 03E, VALLEY County

## IRRIGATION within VALLEY County

			NE				NW				SW				SE				
Twp	Rng	Sec	NE	NW	SW	SE	NE	NW	SW	SE	NE	NW	SW	SE	NE	NW	SW	SE	Totals
17N	03E	15													20.0	19.0	19.5	16.0	74.5

**Conditions of Approval:**

1. C18 This partial decree is subject to such general provisions necessary for the definition of the rights or for the efficient administration of the water rights as may be ultimately determined by the Court at a point in time no later than the entry of a final unified decree. Section 42-1412(6), Idaho Code.
2. W13 Use of this right is combined with water from Lake Irrigation District.
3. C20 Basin 65 General Provisions No. 3, the Separate Streams General Provision, does not apply to appropriations of water after October 18, 1977.  
This water right shall be administered as being from a separate source pursuant to Basin 65 General Provision No. 3. If the holder of this right seeks to change the right pursuant to Idaho Code § 42-222 or successor statute, nothing in this general provision shall preclude any other person or entity from demonstrating that such change in use would cause injury to its water right or from receiving any relief provided by law in the event of injury.
4. This right is a split of former right no. 65-3201.
5. Water is diverted through Westside Lake Fork Ditch.

## Page 4 of 6



**IDAHO DEPARTMENT OF WATER RESOURCES**  
**Proof Report**

5/15/2014

**Dates and Other Information**

Decreed Date: 10/26/2007  
Civil Case Number: 39576  
Judicial District: FIFTH  
Water District Number: 65K  
Mitigation Plan: False

**Combined Use Limits**

N/A

**Element Reviewed/Verified Dates:**

<u>Element</u>	<u>Last Reviewed Date</u>	<u>Reviewer</u>	<u>Last Verified Date</u>	<u>Verifier</u>	<u>Status</u>
Priority Date	4/13/2006	dshaff			Closed
POD	4/13/2006	dshaff			Closed
Source	4/13/2006	dshaff			Closed
POU	4/13/2006	dshaff			Closed
Use	4/13/2006	dshaff			Closed
Season	4/13/2006	dshaff			Closed
Quantity	4/13/2006	dshaff			Closed
Summary	4/13/2006	dshaff	4/13/2006	dshaff	Closed

**Verification Log**

<u>Element</u>	<u>Date</u>	<u>User</u>	<u>Log Text</u>
POD	4/13/2006	dshaff	Updated shape
POU	4/13/2006	dshaff	Updated shape for Active POU
General	4/13/2006	dshaff	(No) 1. Should this water use have been included in a later court decree of the water rights from this source? (Yes) 4. Is the basis of claim decree or license? (Yes) 5. Does the decree or license have a Priority Date? (Yes) 6. Did the Claimant claim the decreed or licensed Priority Date ? (Yes) 15. Is the basis of claim coded correctly? (No) 16. Is a Priority Date remark and/or condition required?
POD	4/13/2006	dshaff	(Yes) 1. Is the basis of this claim a Decree or License? (Yes) 4. Does the Decree or License have a POD? (Yes) 5. Can the claimed POD be verified using the water right file? (No) 10. Is a POD remark and/or condition required?
Source	4/13/2006	dshaff	(Yes) 1. Is the basis of claim Decree or License? (Yes) 4. Does the Decree or License have a source? (Yes) 5. Can the claimed source be verified using the water right file? (No) 11. Is a Source remark and/or condition required?
POU	4/13/2006	dshaff	(Yes) 1. Is the basis of this claim a Decree or License? (Yes) 2a. Is the POU required? (Yes) 5. Does the Decree or License have a POU? (Yes) 6. Can the claimed POU be verified using the water right file? (No) 14. Is a POU remark and/or condition required?
Use	4/13/2006	dshaff	(Yes) 1. Is the basis of this claim a Decree or License? (Yes) 4. Does the Decree or License have a Purpose of Use? (Yes) 5. Can the claimed Purpose of Use be verified using the water right file? (No) 13. Is a Purpose of Use remark and/or condition required?

IDAHO DEPARTMENT OF WATER RESOURCES  
Proof Report

5/15/2014

Season	4/13/2006	dshaff	(Yes) 1. Is the basis of claim Decree or License? (Yes) 4. Does the Decree or License have a Period of Use? (Yes) 5. Can the claimed Period of Use be verified using the water right file? (Yes) 14. Is irrigation claimed as a Purpose of Use? (No) 16. Is the Period of Use on the decree, license or transfer shorter on either the start date or end date than allowable under current IDWR standards? (No) 18. Is a Period of Use remark and/or condition required?
Quantity	4/13/2006	dshaff	(Yes) 1. Is the basis of this claim a Decree or License? (Yes) 4. Does the Decree or License have a diversion rate and/or volume? (Yes) 5. Can the claimed diversion rate and/or volume be verified using the water right file? (No) 8. Does the parent right have an annual diversion volume limit? (No) 9. Is the source Groundwater and does the purpose of use require a diversion volume limit? (No) 11. Has a diversion volume limit been established by a decree, license or transfer for this water use? (No) 12. Is a Quantity remark or condition required?
Summary	4/13/2006	dshaff	(Yes) 1. Is the basis of this claim a Decree, License, Permit, Application or Posted Notice? (No) 2. Does any evidence indicate a five year period of continuous nonuse occurred that could result in recommending forfeiture or partial forfeiture? (No) 5. Does this right have any combined use limits with other rights? (Yes) 6. Is an additional remark and/or condition required? (Yes) 7. Would you like to view the recommended right? (Yes) 8. Is this a split or combined right? (No) 9. Do you have documents you would like to attach or link to the file? (Yes) 10. Would you like to set the verification date?

**SubCase:**

N/A

**Water Supply Bank:**

N/A



WATER DISTRICT NO. 65-K  
Minutes, Annual Meeting  
March 3, 2014

RECEIVED

APR 25 2014

WATER RESOURCES  
WESTERN REGION

The annual meeting of Water District No. 65-K was held on March 3, 2014 at 1:00p.m.at the Donnelly Bible Church in Donnelly, Idaho.

The following were present: Harry Bettis, Laura Bettis, John Leedom, Justin Florence, Wendell Platt, Will Maki, John Hickcock, Donna Steiber, and Shirley Florence.

The meeting was called to order by Harry Bettis. Justin Florence made a motion to appoint Harry Bettis as chairman for the meeting. Will 2<sup>nd</sup> the motion. Motion carried. Shirley Florence was reappointed as secretary-treasurer for the year.

The following business was transacted:

1. The minutes of the March 4, 2013 meeting were read. Laura made a motion to approve the minutes. Justin 2<sup>nd</sup> it and the motion passed.
2. The financial report was presented. The balance on hand is \$7774.29 (report attached).
3. The water master's proposed budget for the year 2014 was presented. The amount proposed is \$5598.00. Will made a motion to approve the budget as presented. Justin 2<sup>nd</sup> it and the motion carried.
4. Art made a motion to increase the water master's wage at \$47.50 a day. Harry 2<sup>nd</sup> it and the motion carried.
5. Laura read the following resolution pertaining to the collection of water user fees as set by the budget:
  - "The water users of Water District No. 65-K do hereby resolve: that no ditch or canal company, or other water user shall have the right to demand and receive water, and the water master shall not deliver to such water user, until the amount due and payable from such user, as set forth by the budget, has been paid."John motioned to accept the resolution. It was seconded and the motion passed.
6. Harry nominated John Leedom as watermaster for the coming year. The motion was 2<sup>nd</sup> by Justin. John was elected by unanimous vote.
7. Chairman Bettis appointed the following to the advisory committee:  
Justin Florence, Will Maki, and Harry Bettis.

SCANNED  
MAY 08 2015

SCANNED

MAY 08 2015

8. Report for the 65-K Rental Pool: 315.87 acre feet of water was rented out. (report attached) There is an accumulated balance of \$2916.00 in the rental pool account.

9. With no further business, Justin motioned to adjourn the meeting. It was seconded and the motion carried. The meeting adjourned at 1:35p.m.

Respectfully Submitted

A handwritten signature in blue ink that reads "Shirley Florence". The signature is written in a cursive, flowing style.

Shirley Florence  
Secretary





State of Idaho

**DEPARTMENT OF WATER RESOURCES**

Western Region, 2735 Airport Way • Boise, Idaho 83705-5082

Phone: (208) 334-2190 • Fax: (208) 334-2348 • Web Site: [www.idwr.idaho.gov](http://www.idwr.idaho.gov)

C. L. "BUTCH" OTTER  
Governor

GARY SPACKMAN  
Director

March 1, 2014

John Leedom  
370 Knights RD  
McCall, ID 83638

RE: Water District #65K Lake Fork Creek

Dear Mr. Leedom:

Enclosed is your Watermaster Certificate of Appointment.

You will take charge of the water of the district and distribute the same in accordance with the laws of Idaho and decrees of the courts. Distribution shall be in accordance with the terms and conditions of the user's respective rights, and as may be required by the Department of Water Resources. You should note that the enclosed Certificate of Appointment authorizes delivery of natural flow and also stored water pursuant to Section 42-801, Idaho Code.

Feel free to contact me at our Western Regional Office if you need assistance during the irrigation season, phone 334-2190.

Sincerely,

A handwritten signature in black ink that reads "John Westra". The signature is written in a cursive, flowing style.

John Westra  
Western Region

Enclosure

SCANNED

MAY 08 2015

State of Idaho  
Department of Water Resources  
***Certificate of Appointment***

SCANNED  
MAY 08 2015

*This is to certify that I have on this day appointed John Leedom as WATERMASTER of  
Water District 65K Lake Fork Creek for the 2014 IRRIGATION SEASON or until his/her successor\* is  
appointed and qualified under the provisions of Sections 42-605 Idaho Code, at  
such rate of compensation as established by applicable law.*



*This certificate has been issued and the seal of the Director  
fixed at Boise, Idaho, this 1st day of March, 2014.*

*Gary Spackman*

Director



RECEIVED

OCT 23 2013

WATER RESOURCES  
WESTERN REGION

## Lake Fork Water District 65-K 2014 Adopted Budget

No	Water Right Owner	Water Right No.	2013 Delivery 24 Hr Sec. Feet	2013 Delivery Charge (\$10 min)	2013 Adopted Budget	2013 Balance Credit or (Debit)	2014 Adopted Budget	2014 Balance Due
1	Miller, Lucile	65-3178, 3220			\$ 63.00	\$ (4.00)	\$ 67.00	\$ 71.00
2	Bettis, Harry/Cruikshank	65-2955, 3154 Thru 3163,3168, Thru 3171,3179,318 2,9045a			\$ 595.00	\$ (48.00)	\$ 643.00	\$ 691.00
3	Simplot Highland Farms	65-3127			\$ 68.00	\$ (4.00)	\$ 72.00	\$ 76.00
4	Armstrong, Pat	65-3172			\$ 38.00	\$ (2.00)	\$ 40.00	\$ 42.00
5	Conley, Steve	65-3173			\$ 14.00	\$ (1.00)	\$ 15.00	\$ 16.00
6	Colpo, Clint	65-3174			\$ 14.00	\$ (1.00)	\$ 15.00	\$ 16.00
7	Schumaker, Rick	65-3195-3196			\$ 48.00	\$ (3.00)	\$ 51.00	\$ 54.00
8	Frazier, Jack	65-3120,3179, 3198			\$ 98.00	\$ (7.00)	\$ 105.00	\$ 112.00
9	Maki, Will	65-3199,3200, 3184,3206,320			\$ 67.00	\$ (2.00)	\$ 69.00	\$ 71.00
10	Maki, Will	65-3202,7523						
11	Trabert Land & Livestock	65-3205,3207			\$ 55.00	\$ (3.00)	\$ 58.00	\$ 61.00
12	Titcze, George	65-3184A			\$ 15.00	\$ 1.00	\$ 15.00	\$ 14.00
13	Lindsay, Kasey	65-10538A			\$ 14.00	\$ (1.00)	\$ 15.00	\$ 14.00
14	Teufel Properties LLC.	65-10538B			\$ 16.00		\$ 16.00	\$ 16.00
15	Berheim, Arvin	65-3184B			\$ 10.00		\$ 10.00	\$ 10.00
16	Stewart Louise	65-3184C			\$ 10.00		\$ 10.00	\$ 10.00
17	Truxel, Mike	65-3184D			\$ 10.00		\$ 10.00	\$ 10.00
18	Hattrup, Ed	65-3184D			\$ 10.00		\$ 10.00	\$ 10.00
19	Steve Callan	65-3184E			\$ 10.00		\$ 10.00	\$ 10.00
20	Valdez, Gordon	65-3184F			\$ 10.00		\$ 10.00	\$ 10.00
21	Balsco, James	65-3184G			\$ 10.00		\$ 10.00	\$ 10.00
22	Jenson, Lee	65-3184H			\$ 10.00		\$ 10.00	\$ 10.00
23	Elk Haven Sub	65-3194			\$ 50.00	\$ 4.00	\$ 50.00	\$ 46.00
24	Leedom Mike	65-3194			\$ 42.00	\$ 4.00	\$ 42.00	\$ 38.00
25	White, Steven	65-3194			\$ 22.00	\$ 2.00	\$ 22.00	\$ 20.00
26	Traxel, Tyan	65-3211			\$ 10.00		\$ 10.00	\$ 11.00
27	Kessler, Rod	65-3211			\$ 10.00		\$ 10.00	\$ 13.00
28	Burgess, Wayne	65-3211			\$ 10.00		\$ 10.00	\$ 10.00
29	Houlihan, Janet	65-3211			\$ 10.00		\$ 10.00	\$ 10.00

SCANNED

APR 23 2015

30	White Luther	65-3176			\$ 29.00	\$ (2.00)	\$ 30.00	\$ 32.00
31	Bettis, Harry/Cruzen	65-2708,2932, 2952,3186, 3187			\$ 515.00	\$ 37.00	\$ 515.00	\$ 478.00
32	Uhrig, Albert	65-3210			\$ 29.00	\$ (1.00)	\$ 30.00	\$ 31.00
33	Nissula, James	65-3176			\$ 31.00	\$ (1.00)	\$ 31.00	\$ 32.00
34	Right, Steven	65-3166			\$ 27.00		\$ 27.00	\$ 27.00
35	Goode, Vernon	65-3164			\$ 24.00	\$ 1.00	\$ 24.00	\$ 23.00
36	Kirk, David	65-3213			\$ 10.00		\$ 10.00	\$ 10.00
37	Kirk, David	65-3213			\$ 10.00		\$ 10.00	\$ 10.00
38	Purdom, Kenneth	65-2700			\$ 26.00	\$ 2.00	\$ 26.00	\$ 24.00
39	Bettis, Harry	65-3209			\$ 65.00	\$ 5.00	\$ 62.00	\$ 57.00
40	Wendell, Mary	65-3183			\$ 22.00	\$ 1.00	\$ 22.00	\$ 21.00
41	Tine Development	65-3185			\$ 23.00	\$ 7.00	\$ 20.00	\$ 13.00
42	KDB LLC.	65-3185			\$ 10.00		\$ 10.00	\$ 10.00
43	Nahas, Ron	65-3210			\$ 47.00	\$ 5.00	\$ 43.00	\$ 38.00
44	Lake Irrigation	65-3218			\$ 3,163.00	\$ (13.00)	\$ 3,176.00	\$ 3,189.00
45	Wolfe Ranches	65-3180			\$ 38.00	\$ 4.00	\$ 35.00	\$ 31.00
46	Miller, Thomas	65-11282			\$ 10.00		\$ 10.00	\$ 10.00
47	West Roseberry 150	65-2707			\$ 24.00	\$ 3.00	\$ 24.00	\$ 26.00
48	Doboer, Judd	65-2729			\$ 53.00	\$ 5.00	\$ 50.00	\$ 45.00
49	Mcmanus, John	65-2768			\$ 10.00		\$ 10.00	\$ 10.00
50	Royal Fork	65-7002			\$ 21.00	\$ 4.00	\$ 20.00	\$ 16.00
					\$ 5,526.00	86.00(92.00)	\$ 5,598.00	\$ 5,615.00

SCANNED

APR 23 2015