

## MEMORANDUM

To: Gray's Creek File  
From: Jeff Peppersack  
Date: June 7, 2012

**Re: Site Visit to Gray's Creek Ditch**

I met with Joe Stippich in the morning to visit the Gray's Creek Ditch and some of the diversions and splits off the ditch. The Gray's Creek Ditch diversion from the Little Weiser River is located in T14N, R1W, Sec. 23, SWNW.

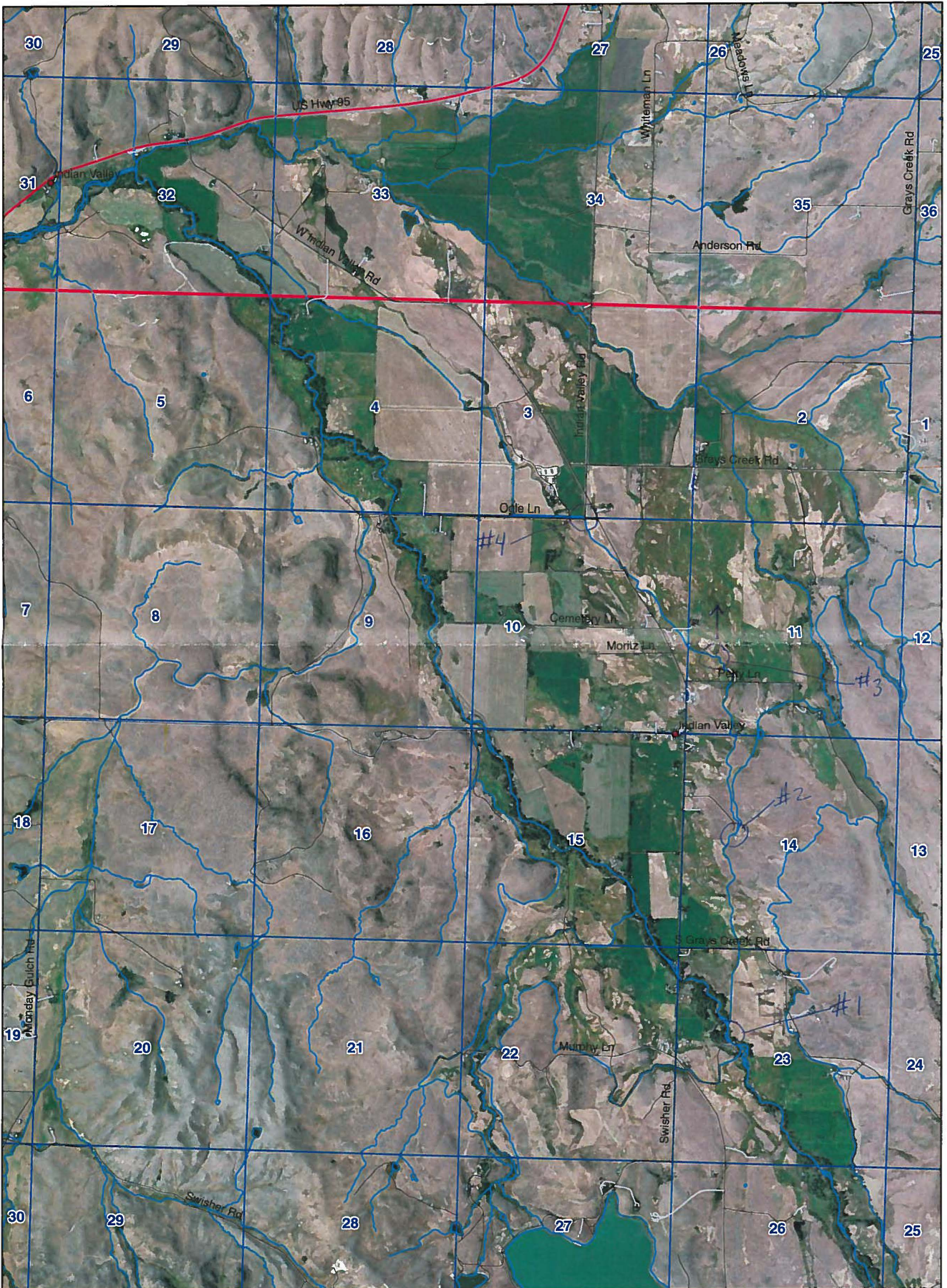
The ditch flows north, serving a few users, and splits into two parts about a mile from the POD (see #2 on attached images). One split flows generally northeast and serves users on the east side of the service area. The other split continues north serving several users along the way and splits again about 2 miles from the POD (see #3 on attached images). One split flows generally north. We did not follow this split to the places of use, but it is generally understood that this split flows generally north, serving some users (Allred, Wallach and Grossen?) and then northwest, ultimately reaching the Legg POU. It may cross or inject into and from Gray's Creek along the way. The other split flows generally northwest serving a couple of users (Shaw and Grossen?) before reaching a 3-way splitter located about 3 miles from the POD (see #4 on attached images). The split on the left serves some of Grossen's POU. The split in the middle serves Kretten's POU. The split on the right serves Legg's POU.

We did not observe any measuring devices or control works at the locations, but it did look like there was some way to adjust flows into the various splits of the ditch.

Joe explained that the lower portions of Gray's Creek ditch likely pick up return flows and recharge as the season progresses, complicating any measuring effort that might occur.

6/7/12

# Grays Ch Ditch Area



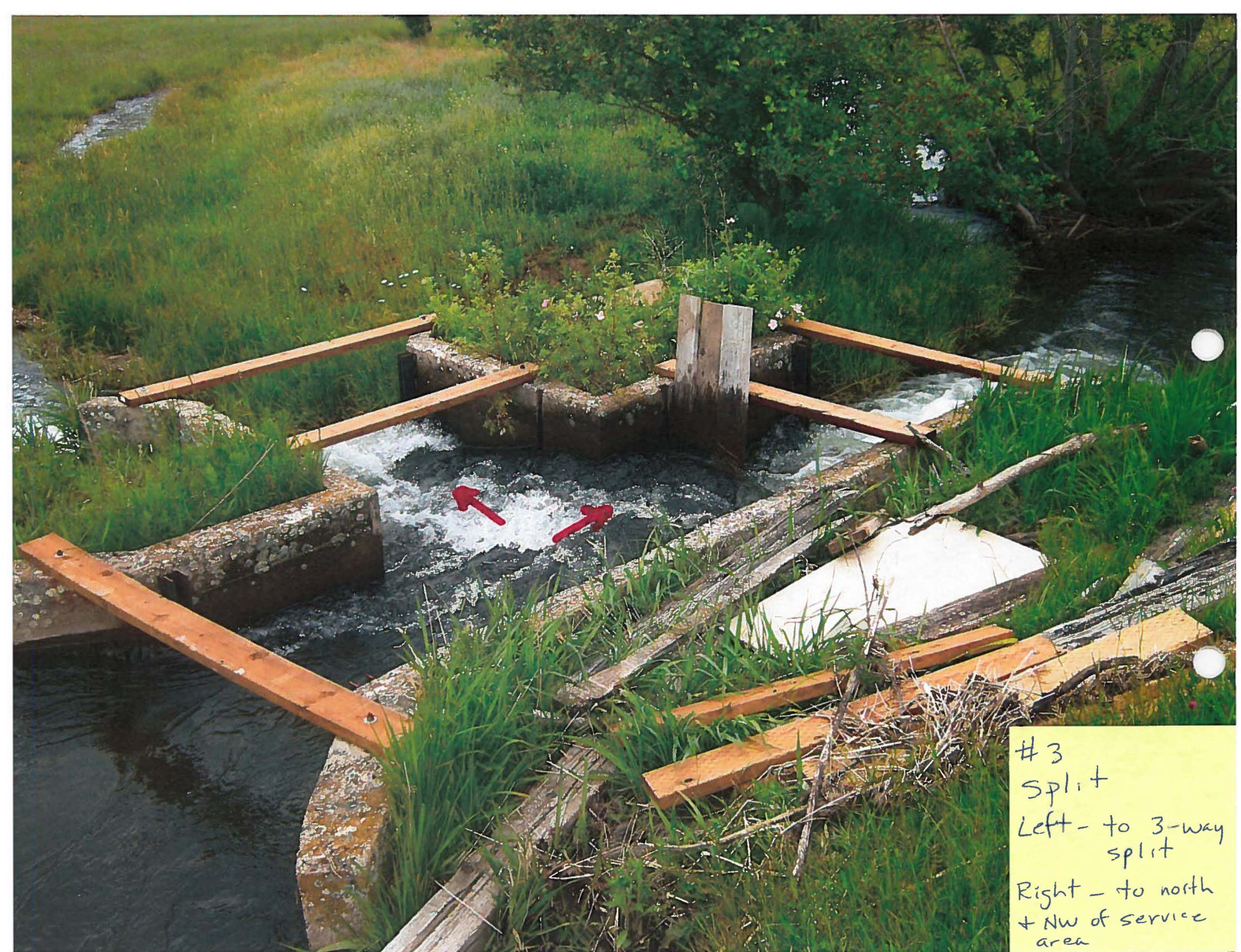
- #1 Diversion @ Little Weiser River 14N 1W 23 SWNW
- #2 Split to East side
- #3 Split to North + NW
- #4 Three-way split  
Left - Grossen  
Mid - Kretten  
Right - Leaa



# 4  
3-way split  
Left - Grossen  
Mid - Kretten  
Right - Legg



# 2  
Split  
upper lateral to  
east side



#3  
Split  
Left - to 3-way  
split  
Right - to north  
+ NW of service  
area