



# United States Department of the Interior

## BUREAU OF LAND MANAGEMENT

Idaho State Office  
1387 South Vinnell Way  
Boise, Idaho 83709-1657

In Reply Refer To:  
7250 (SRWR) (933b)

July 16, 2001

Candice McHugh  
Deputy Attorney General  
State of Idaho  
Idaho Department of Water Resources  
State Office  
1301 N. Orchard Street  
Boise, Idaho 83709

**RE: 35-08039, Request for License Amendment Based on GPS Data**

Dear Ms. McHugh:

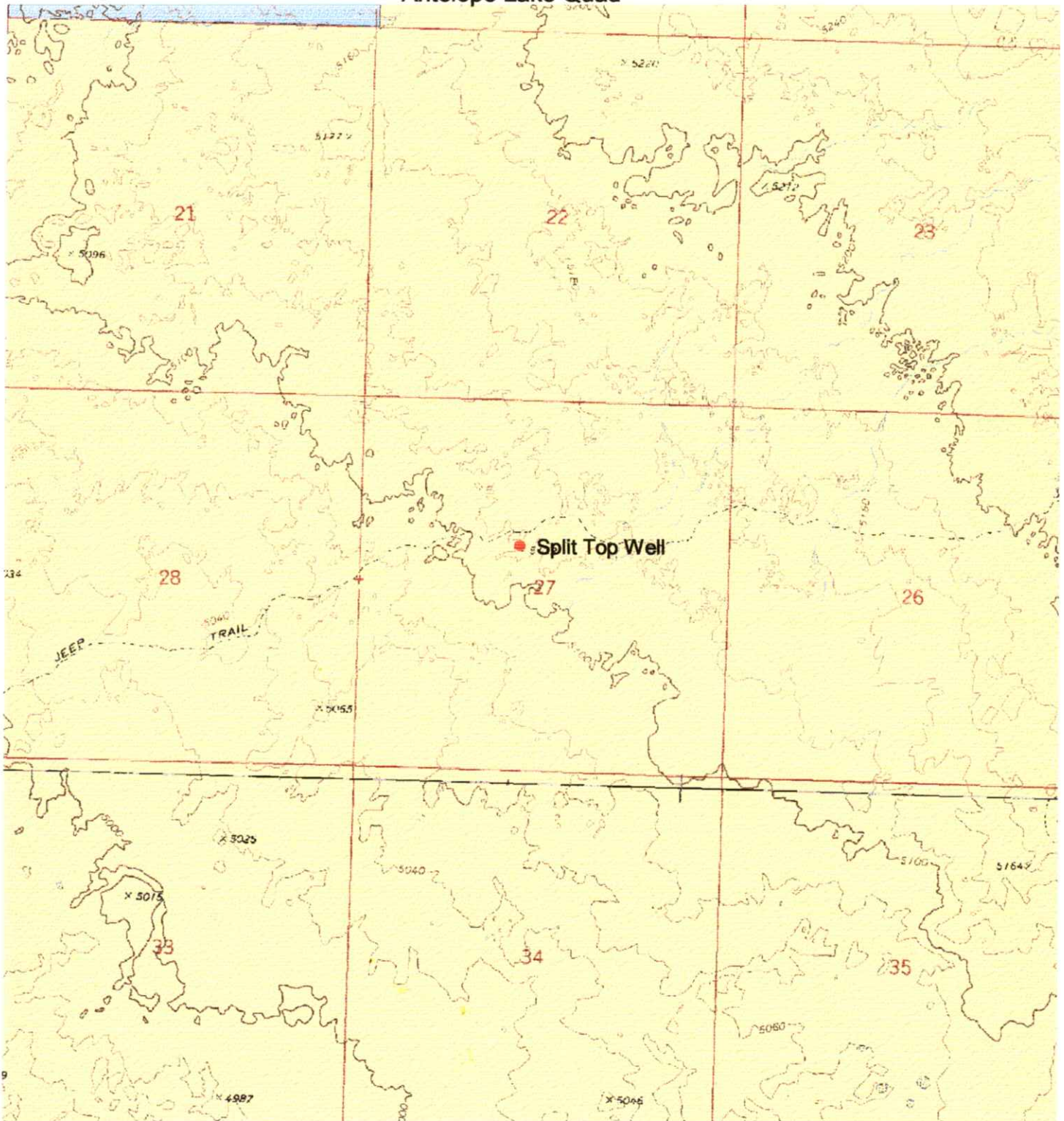
We have had several meetings with your office to determine how best to pursue license amendments without overburdening the Idaho Department of Water Resources (IDWR) with transfers to just more accurately describe locations of water developments. Based upon IDWR's recommendation, I am requesting that IDWR amend BLM's license to correct land descriptions based upon better technological methods used to locate this water right than the acceptable, standard methods used to establish the right. Global Positioning System (GPS) is a more accurate and reliable method of determining location than previous methods relying on navigation by use of topographic maps and compasses. BLM is not seeking to transfer (or move) the location of the development, but is simply seeking to more accurately describe the original constructed location.

If there are questions regarding any statements above, please do not hesitate to contact me at 373-3831 or at the address provided above.

Sincerely,

Fredric W. Price  
Water Rights Specialist

Split Top Well  
3503488106 35-08039  
T.3S, R.28E, S.27 SESENW  
Antelope Lake Quad



0.5 0 0.5 Miles

1:24,000 Scale



- Wtr-001.pl
- B35line.shp
- B35point.shp
- Idown.shp
- B.L.M.
- Bureau of Indian Affairs
- Department of Energy
- Forest Service
- Military Reservations
- National Parks & Monuments
- Open water
- Private
- State of Idaho
- U.S. Fish & Wildlife Service

PRODUCED BY THE BLM, IDAHO FALLS FIELD OFFICE.  
Projection Universal Transverse Mercator  
Zone 12, 1927 North American Datum  
No warranty is made by the Bureau of Land Management  
as to the accuracy, reliability or completeness of this data  
for individual or aggregate use with other data.  
Prepared by Deena Teel on 5/30/2000 from GPS data  
collected on 5/3/1995.