

[illegible]



# AFFIDAVIT OF PUBLICATION

State of Idaho, County of Custer, ss:

I, MARGARET PARKS

Publisher of the Challis Messenger, a weekly newspaper, published at Challis, Idaho, do solemnly swear that the notice hereto attached and made a part hereof, was published in the regular and entire issue of the Challis Messenger for 2 consecutive weeks, commencing with the issue dated Nov. 10

1983 and ending with the issue dated Nov 17 1983

Margaret Parks

Subscribed and sworn to before this 18 day of November 1983

Ethel M. Beck

Notary Public, residing at Challis, Idaho. My commission expires on Life

RECEIVED

NOV 21 1983

Department of Water Resources  
Southern District Office

## NOTICE OF APPLICATION FOR WATER RIGHT

Notice is hereby given that the following application(s) have been submitted for permit to appropriate the public waters of the State of Idaho:

72-7349  
U.S. DEPT. OF INTERIOR  
BUREAU OF LAND MG-MT., IDAHO STATE OFFICE,  
3380 AMERICANA TERRACE, BOISE, ID 83706

Source: SPRING trib. to CORRAL BASIN CREEK  
Date Filed: 07/21/1983  
Diversion Pt: NENE Sec 03 T 10N R 20E

Use: STOCKWATER FROM STORAGE (0.5 AF) WILDLIFE FROM STORAGE (0.5 AF) DIVERSION TO STORAGE (0.02 CFS)  
In: NENE Sec 03 T 10N R 20E

72-7343  
U.S. DEPT. OF INTERIOR  
BUREAU OF LAND MG-MT., IDAHO STATE OFFICE,  
3380 AMERICANA TERRACE, BOISE, ID 83706

Source: SPRING trib. to BROKEN WAGON CREEK  
Date Filed: 07/21/1983  
Diversion Pt: SWSE Sec 02 T 10N R 20E

Use: STOCKWATER FROM STORAGE (0.5 AF) WILDLIFE FROM STORAGE (0.5 AF) DIVERSION TO STORAGE (0.02 CFS)  
In: SWSE Sec 02 T 10N R 20E

72-7347  
U.S. DEPT. OF INTERIOR  
BUREAU OF LAND MG-MT., IDAHO STATE OFFICE,  
3380 AMERICANA TERRACE, BOISE, ID 83706

Source: SPRING trib. to HORSE BASIN CREEK  
Date Filed: 07/21/1983  
Diversion Pt: SWSE Sec 15 T 10N R 20E

Use: STOCKWATER FROM STORAGE (0.5 AF) WILDLIFE FROM STORAGE (0.5 AF) DIVERSION TO STORAGE (0.02 CFS)  
In: SWSE Sec 15 T 10N R 20E

72-7346  
U.S. DEPT. OF INTERIOR  
BUREAU OF LAND MG-MT., IDAHO STATE OFFICE,  
3380 AMERICANA TERRACE, BOISE, ID 83706

Source: SPRING trib. to CORRAL BASIN CREEK  
Date Filed: 07/21/1983  
Diversion Pt: SWNE Sec 03 T 10N R 20E

Use: STOCKWATER FROM STORAGE (0.5 AF) WILDLIFE FROM STORAGE (0.5 AF) DIVERSION TO STORAGE (0.02 CFS)  
In: SWNE Sec 03 T 10N R 20E

72-7345  
U.S. DEPT. OF INTERIOR  
BUREAU OF LAND MG-MT., IDAHO STATE OFFICE,  
3380 AMERICANA TERRACE, BOISE, ID 83706

Source: SPRING trib. to CORRAL BASIN CREEK  
Date Filed: 07/21/1983  
Diversion Pt: LOT 04 (NWNW) Sec 03 T 10N R 20E

Use: STOCKWATER FROM STORAGE (0.5 AF) WILDLIFE FROM STORAGE (0.5 AF) DIVERSION TO STORAGE (0.02 CFS)  
In: LOT 04 (NWNW) Sec 03 T 10N R 20E

74-7344  
U.S. DEPT. OF INTERIOR  
BUREAU OF LAND MG-MT., IDAHO STATE OFFICE,  
3380 AMERICANA TERRACE, BOISE, ID 83706

Source: SPRING trib. to MOSQUITO CREEK  
Date Filed: 07/25/1983  
Diversion Pt: SWSW Sec 03 T 09N R 19E

Use: STOCKWATER FROM STORAGE (0.5 AF) WILDLIFE FROM STORAGE (0.5 AF) DIVERSION TO STORAGE (0.02 CFS)  
In: SWSW Sec 03 T 09N R 19E

72-7342  
U.S. DEPT. OF INTERIOR  
BUREAU OF LAND MG-MT., IDAHO STATE OFFICE,  
3380 AMERICANA TERRACE, BOISE, ID 83706

Source: SPRING trib. to HORSE BASIN CREEK  
Date Filed: 07/21/1983  
Diversion Pt: NESE Sec 10 T 10N R 20E

Use: STOCKWATER FROM STORAGE (0.5 AF) WILDLIFE FROM STORAGE (0.5 AF) DIVERSION TO STORAGE (0.02 CFS)  
In: NESE Sec 10 T 10N R 20E

72-7341  
U.S. DEPT. OF INTERIOR  
BUREAU OF LAND MG-MT., IDAHO STATE OFFICE,  
3380 AMERICANA TERRACE, BOISE, ID 83706

Source: GROUNDWATER  
Date Filed: 07/25/1983  
Diversion Pt: NESW Sec 22 T 11N R 18E

Use: DOMESTIC (0.02 CFS)  
In: NESW Sec 22 T 11N R 18E

72-7340  
U.S. DEPT. OF INTERIOR  
BUREAU OF LAND MG-MT., IDAHO STATE OFFICE,  
3380 AMERICANA TERRACE, BOISE, ID 83706

Source: GROUNDWATER  
Date Filed: 07/25/1983  
Diversion Pt: NWNW Sec 30 T 12N R 19E

Use: DOMESTIC (0.01 CFS)  
In: NWNW Sec 30 T 12N R 19E

72-7339  
U.S. DEPT. OF INTERIOR  
BUREAU OF LAND MG-MT., IDAHO STATE OFFICE,  
3380 AMERICANA TERRACE, BOISE, ID 83706

Source: SPRING trib. to CORRAL BASIN CREEK  
Date Filed: 08/15/1983  
Diversion Pt: SENE Sec 09 T 10N R 20E

Use: STOCKWATER FROM STORAGE (0.5 AF) WILDLIFE FROM STORAGE (0.5 AF) DIVERSION TO STORAGE (0.02 CFS)  
In: SENE Sec 09 T 10N R 20E

72-7338  
U.S. DEPT. OF INTERIOR  
BUREAU OF LAND MG-MT., IDAHO STATE OFFICE,  
3380 AMERICANA TERRACE, BOISE, ID 83706

Source: SPRING trib. to CORRAL BASIN CREEK  
Date Filed: 08/15/1983  
Diversion Pt: SWNW Sec 10 T 10N R 20E

Use: STOCKWATER FROM STORAGE (0.5 AF) WILDLIFE FROM STORAGE (0.5 AF) DIVERSION TO STORAGE (0.02 CFS)  
In: SWNW Sec 10 T 10N R 20E

72-7337  
U.S. DEPT. OF INTERIOR  
BUREAU OF LAND MG-MT., IDAHO STATE OFFICE,  
3380 AMERICANA TERRACE, BOISE, ID 83706

Source: SPRING trib. to CORRAL BASIN CREEK  
Date Filed: 08/15/1983  
Diversion Pt: SESE Sec 33 T 11N R 20E

Use: STOCKWATER FROM STORAGE (0.5 AF) WILDLIFE FROM STORAGE (0.5 AF) DIVERSION TO STORAGE (0.02 CFS)  
In: SESE Sec 33 T 11N R 20E

72-7336  
U.S. DEPT. OF INTERIOR  
BUREAU OF LAND MG-MT., IDAHO STATE OFFICE,  
3380 AMERICANA TERRACE, BOISE, ID 83706

Source: SPRING trib. to CORRAL BASIN CREEK  
Date Filed: 08/15/1983  
Diversion Pt: SENW Sec 04 T 10N R 20E

Use: STOCKWATER FROM STORAGE (0.5 AF) WILDLIFE FROM STORAGE (0.5 AF) DIVERSION TO STORAGE (0.02 CFS)  
In: SENW Sec 04 T 10N R 20E

U.S. DEPT. OF INTERIOR  
BUREAU OF LAND MG-MT., IDAHO STATE OFFICE,  
3380 AMERICANA TERRACE, BOISE, ID 83706

Source: SPRING trib. to WARM SPRINGS CREEK  
Date Filed: 08/08/1983  
Diversion Pt: SWSE Sec 07 T 13N R 20E

Use: STOCKWATER (0.01 CFS) WILDLIFE (0.01 CFS)  
In: SWSE Sec 07 T 13N R 20E

72-7333  
U.S. DEPT. OF INTERIOR  
BUREAU OF LAND MG-MT., IDAHO STATE OFFICE,  
3380 AMERICANA TERRACE, BOISE, ID 83706

Source: SPRING trib. to ELLIS CREEK  
Date Filed: 08/10/1983  
Diversion Pt: SESE Sec 17 T 16N R 20E

Use: STOCKWATER FROM STORAGE (0.5 AF) STOCKWATER FROM STORAGE (0.5 AF) WILDLIFE FROM STORAGE (0.5 AF) DIVERSION TO STORAGE (0.02 CFS)  
In: SESE Sec 17 T 16N R 20E

72-7332  
U.S. DEPT. OF INTERIOR  
BUREAU OF LAND MG-MT., IDAHO STATE OFFICE,  
3380 AMERICANA TERRACE, BOISE, ID 83706

Source: UNNAMED STREAM trib. to SALMON RIVER  
Date Filed: 08/10/1983  
Diversion Pt: NWNW Sec 20 T 15N R 19E

Use: STOCKWATER FROM STORAGE (0.2 AF) STOCKWATER FROM STORAGE (0.2 AF) WILDLIFE FROM STORAGE (0.2 AF) DIVERSION TO STORAGE (0.01 CFS)  
In: NWNW Sec 20 T 15N R 19E

72-7331  
U.S. DEPT. OF INTERIOR  
BUREAU OF LAND MG-MT., IDAHO STATE OFFICE,  
3380 AMERICANA TERRACE, BOISE, ID 83706

Source: SPRING trib. to ELLIS CREEK  
Date Filed: 08/10/1983  
Diversion Pt: SWNW Sec 32 T 16N R 20E

Use: STOCKWATER FROM STORAGE (0.5 AF) STOCKWATER FROM STORAGE (0.5 AF) WILDLIFE FROM STORAGE (0.5 AF) DIVERSION TO STORAGE (0.02 CFS)  
In: SWNW Sec 32 T 16N R 20E

72-7330  
U.S. DEPT. OF INTERIOR  
BUREAU OF LAND MG-MT., IDAHO STATE OFFICE,  
3380 AMERICANA TERRACE, BOISE, ID 83706

Source: SPRING trib. to ELLIS CREEK  
Date Filed: 08/10/1983  
Diversion Pt: NWSW Sec 12 T 16N R 19E

Use: STOCKWATER FROM STORAGE (0.5 AF) STOCKWATER FROM STORAGE (0.5 AF) WILDLIFE FROM STORAGE (0.5 AF) DIVERSION TO STORAGE (0.02 CFS)  
In: NWSW Sec 12 T 16N R 19E

72-7329  
U.S. DEPT. OF INTERIOR  
BUREAU OF LAND MG-MT., IDAHO STATE OFFICE,  
3380 AMERICANA TERRACE, BOISE, ID 83706

Source: SPRING trib. to CORRAL BASIN CREEK  
Date Filed: 07/25/1983  
Diversion Pt: NWNW Sec 08 T 10N R 20E

Use: STOCKWATER FROM STORAGE (0.5 AF) WILDLIFE FROM STORAGE (0.5 AF) DIVERSION TO STORAGE (0.02 CFS)  
In: NWNW Sec 08 T 10N R 20E

72-7328  
U.S. DEPT. OF INTERIOR  
BUREAU OF LAND MG-MT., IDAHO STATE OFFICE,  
3380 AMERICANA TERRACE, BOISE, ID 83706

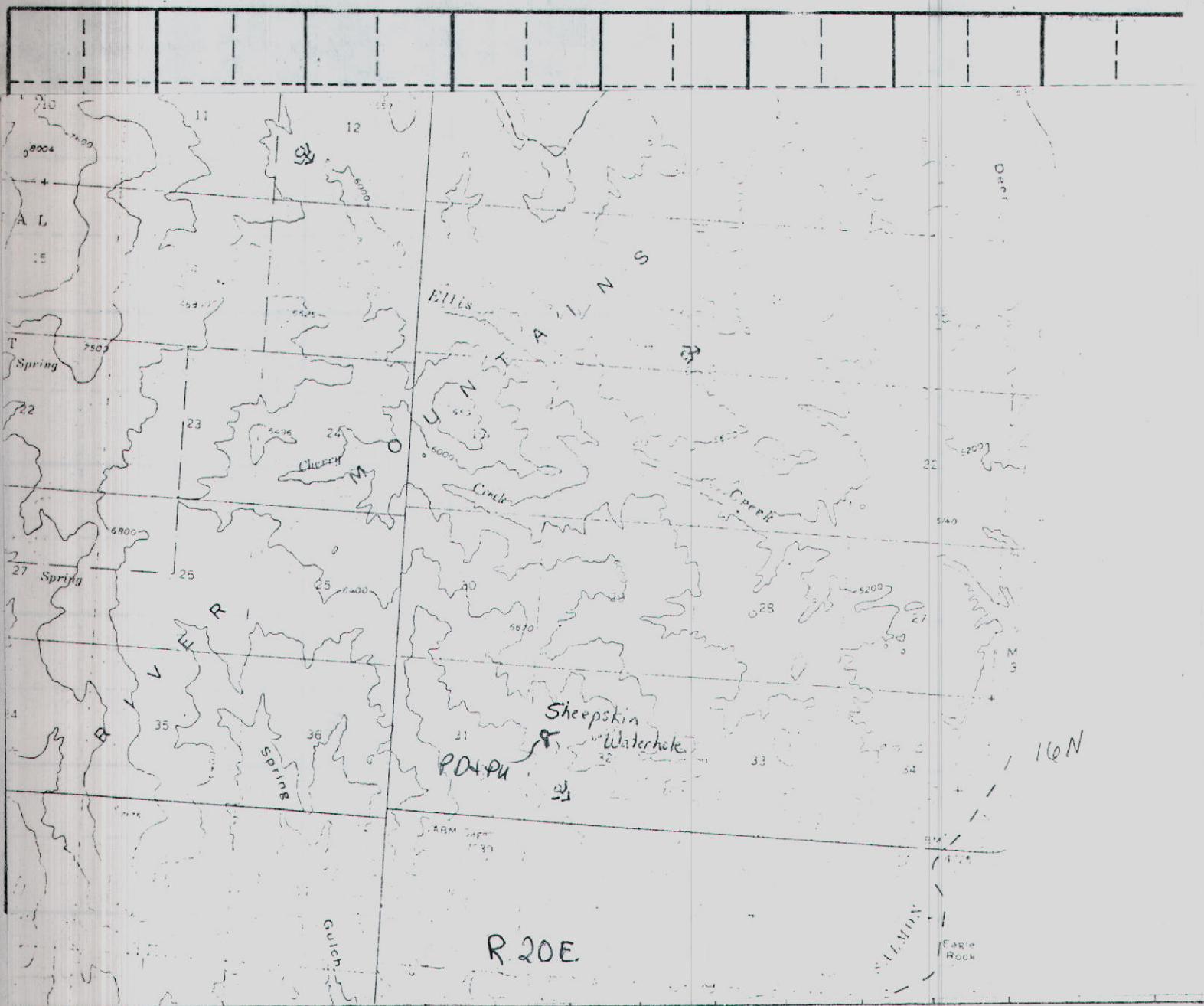
Source: SPRING trib. to CORRAL BASIN CREEK  
Date Filed: 07/25/1983  
Diversion Pt: NWNW Sec 08 T 10N R 20E

Use: STOCKWATER FROM STORAGE (0.5 AF) WILDLIFE FROM STORAGE (0.5 AF) DIVERSION TO STORAGE (0.02 CFS)  
In: NWNW Sec 08 T 10N R 20E

MICROFILMED



# MAP (Attach Aerial Photo)



Point(s) of diversion: SW 1/4 NW 1/4 Sec 32, T. 16N. R. 20E.

Place(s) of Use

TWP.	RGE.	SEC.	NE 1/4				NW 1/4				SW 1/4				SE 1/4				TOTALS
			NE 1/4	NW 1/4	SW 1/4	SE 1/4	NE 1/4	NW 1/4	SW 1/4	SE 1/4	NE 1/4	NW 1/4	SW 1/4	SE 1/4	NE 1/4	NW 1/4	SW 1/4	SE 1/4	
16N	20E	32							WS										

Recommended Amendments:

- ☐ Change P.D. as reflected above
 ☐ Add P.D. as reflected above
 ☒ None
- ☐ Change P.U. as reflected above
 ☐ Add P.U. as reflected above
 ☐ Other

**MICROFILMED**

Examiner's Signature James S. Blair  
 Checked by J. S. Blair ADM  
 Approved by Jim

Date 4-10-86  
 Date 4-21-86  
 Date 11-20-86

State of Idaho  
Department of Water Resources

# WATER RIGHT LICENSE

WATER RIGHT NO. 72-7331

Priority: August 10, 1983 Amount: .02 CFS 3.0 AF

This is to certify, that U.S. DEPT. OF INTERIOR  
BUREAU OF LAND MGMT.  
IDAHO STATE OFFICE  
3380 AMERICANA TERRACE  
BOISE, ID 83706

has complied with the terms and conditions  
of the permit issued pursuant to Application for Permit dated August 10, 1983, and  
has submitted proof to the Department of Water Resources on May 16, 1984, that  
water has been applied to a beneficial use; an examination by the Department indicates  
that the works have a diversion capacity of .02 cfs of water from;

SPRING tributary to ELLIS CREEK

and that a water right has been established as follows:

<u>BENEFICIAL USE</u>	<u>PERIOD OF USE</u>	<u>RATE OF DIVERSION</u>	<u>VOLUME</u>
Stockwater	01/01 to 12/31	.02 cfs	2.5 af
Stockwater storage	01/01 to 12/31		.5 af
Wildlife storage	01/01 to 12/31		.5 af
	Totals	.02 CFS	3.0 AF

LOCATION OF POINT OF DIVERSION(S): SWNW , Sec. 32, Township 16N, Range 20E  
Custer County

PLACE OF USE: Stockwater

TWN RGE SEC

16N 20E 32 SWNW

PLACE OF USE: Stockwater storage, same as Stockwater use

PLACE OF USE: Wildlife storage, same as Stockwater use

CONDITIONS/REMARKS:

1. The right to the use of the water hereby confirmed is limited to the amount which can actually be beneficially used and is restricted and appurtenant to the lands or place of use and to the purpose herein described, as provided by the laws of Idaho.
2. This right is subject to all prior water rights and may be forfeited by five years of non-use.
3. Modifications to or variance from this license must be made within the limits of Section 42-222, Idaho Code, or the applicable Idaho law.
4. This right, when considered with all other rights common to the same grazing allotment, shall be limited to the quantity of water beneficially used by the number of stock within the allotment.
5. Project also known as Sheepskin Waterhole.

MICROFILMED  
MAR 09 1987

State of Idaho  
Department of Water Resources

PAGE 2

# WATER RIGHT LICENSE

WATER RIGHT NO. 72-7331

This license is issued pursuant to the provisions of Section 42-219, Idaho Code. Witness the seal and signature of the Director, affixed at Boise, this 23<sup>RD</sup> day of FEBRUARY, 1987.

Acting for the Director



RECEIVED

MAR 11 1987

STATE OF IDAHO  
DEPARTMENT OF WATER RESOURCES  
APPLICATION FOR PERMIT

RECEIVED  
1087

AUG 10 1983

Department of Water Resources

APPROVED

To appropriate the public waters of the State of Idaho

1. Name of applicant USDI, Bureau of Land Management Phone (208) 756-2201

Post office address Box 430; Salmon, Idaho 83467

2. Source of water supply Spring which is a tributary of Ellis Creek

3. Location of point of diversion is SW  $\frac{1}{4}$  of NW  $\frac{1}{4}$  of Section 32 Township 16N.

Range 20E. B.M. Custer County, additional points of diversion if any: \_\_\_\_\_

4. Water will be used for the following purposes:

Amount .5 a/f for livestock purposes from 05/01 to 05/31 (both dates inclusive)  
(~~cfs or~~ acre-feet per annum) from storage

Amount .5 a/f for wildlife purposes from 01/01 to 12/31 (both dates inclusive)  
(~~cfs or~~ acre-feet per annum) from storage

Amount .02 cfs for diversion to storage purposes from 01/01 to 12/31 (both dates inclusive)  
(~~cfs or~~ acre-feet per annum)

Amount \_\_\_\_\_ for \_\_\_\_\_ purposes from \_\_\_\_\_ to \_\_\_\_\_ (both dates inclusive)  
(~~cfs or~~ acre-feet per annum)

5. Total quantity to be appropriated:

a. .02 cubic feet per second and/or b. 1 acre-feet per annum.

6. Proposed diverting works:

a. Description of ditches, flumes, pumps, headgates, etc. Spring dug out to make a waterhole.

b. Height of storage dam \_\_\_\_\_ feet, active reservoir capacity \_\_\_\_\_ acre-feet; total reservoir capacity \_\_\_\_\_ acre-feet, materials used in storage dam: \_\_\_\_\_

Period of year when water will be diverted to storage \_\_\_\_\_ to \_\_\_\_\_ inclusive.  
(Month/Day) (Month/Day)

c. Proposed well diameter is \_\_\_\_\_ inches; proposed depth of well is \_\_\_\_\_ feet.

7. Time required for the completion of the works and application of the water to the proposed beneficial

use is 5 years (minimum 1 year - maximum 5 years).

8. Description of proposed uses:

a. If water is **not** for irrigation:

(1) Give the place of use of water: SW  $\frac{1}{4}$  of NW  $\frac{1}{4}$  of Section 32 Township 16N.

Range 20E. B.M.

(2) Amount of power to be generated: \_\_\_\_\_ horsepower under \_\_\_\_\_ feet of head.

(3) List number of each kind of livestock to be watered 1400 cattle, 51 horses

(4) Name of municipality to be served \_\_\_\_\_, or number of families to be supplied with domestic water \_\_\_\_\_.

(5) If water is to be used for other purposes describe: Wildlife - bighorn sheep, deer, elk, antelope, bear, mountain lion

MICROFILMED

# REPROFILLED

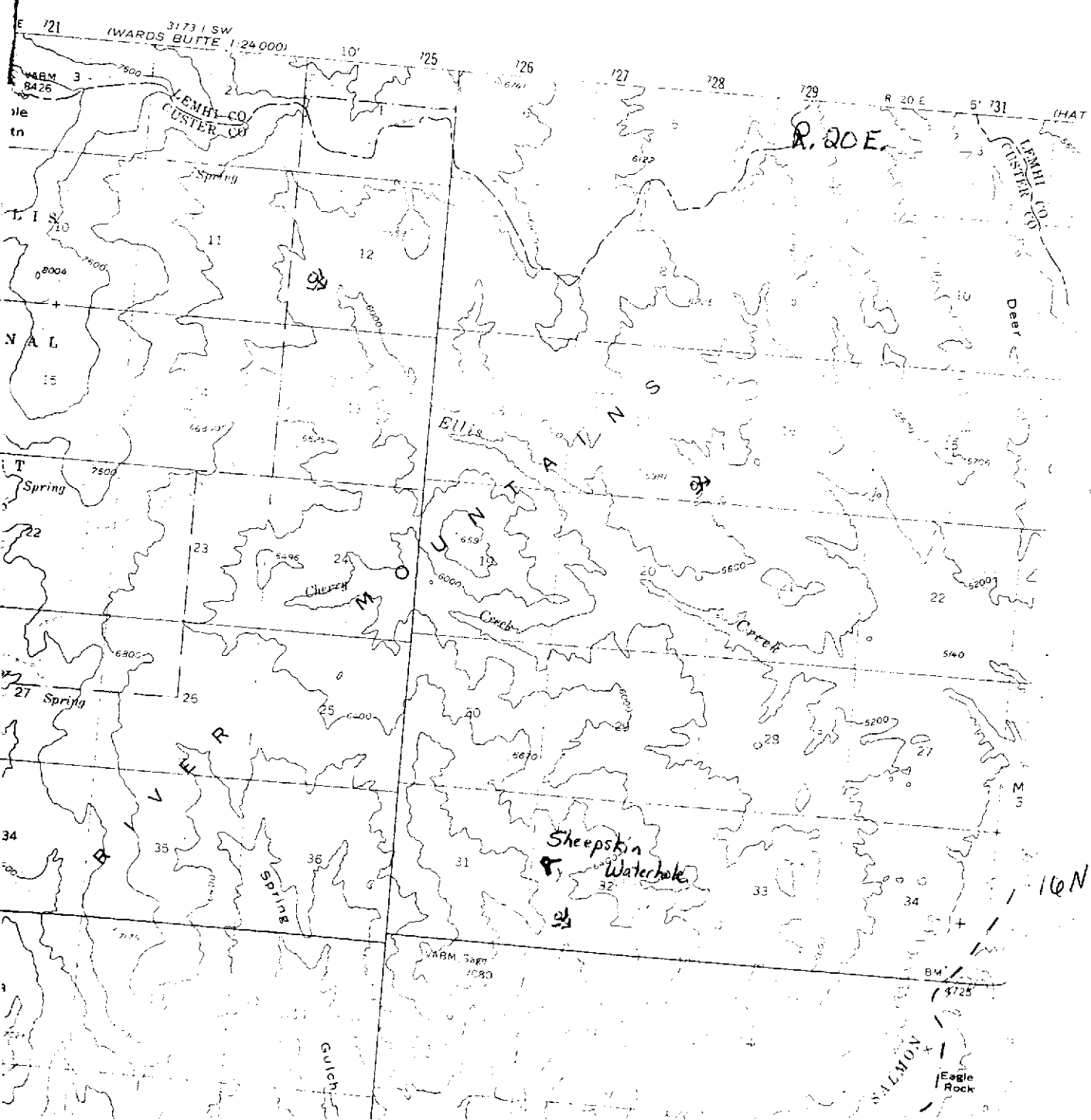
Total number of acres to be irrigated \_\_\_\_\_

---

---

[illegible]

ERIOR







11. Map of proposed project: show clearly the proposed point of diversion, place of use, section number, township and range number.

See attached map.

[illegible]

Scale: 2 inches equal 1 mile.

BE IT KNOWN that the undersigned hereby makes application for permit to appropriate the public waters of the State of Idaho as herein set forth.

Kenneth S. Wall  
(Applicant) DISTRICT MANAGER



Proposed Permit 8/10/83

Received by CW Date 8-10-83 Time 11:05  
Preliminary check by JP Fee \$30.00 ID-910-BP3-0003  
Receipted by JP Date 12-27-83 # 33664  
Publication prepared by maeppa Date 10/31/83  
Published in Custer Publishing Co  
Publication dates 11/10 & 11/17/83  
Publication approved maeppa Date 11/21/83  
Protests filed by: None

Copies of protests forwarded by \_\_\_\_\_  
Hearing held by \_\_\_\_\_ Date \_\_\_\_\_  
Recommended for approval denial by ADM CW

**ACTION OF THE DIRECTOR, DEPARTMENT OF WATER RESOURCES**

This is to certify that I have examined Application for Permit to appropriate the public waters of the State of Idaho No. 72-7331, and said application is hereby APPROVED.

1. Approval of said application is subject to the following limitations and conditions:

- a. SUBJECT TO ALL PRIOR WATER RIGHTS.
- b. Proof of construction of works and application of water to beneficial use shall be submitted on or before January 1, 19 89.
- c. The rate of diversion, if water is to be used for irrigation under this permit, when combined with all other water rights for the same land shall not exceed 0.02 cubic feet per second for each acre of land.
- d. Other: Permit holder shall commence the excavation or construction of diverting works within one year of the date this permit is issued and shall proceed diligently until the project is complete.

Witness my hand this 4<sup>th</sup> day of January, 1984.

A. Glen Saxton  
Chief, Operations Bureau

MICROFILMED

# AFFIDAVIT OF PUBLICATION

State of Idaho, County of Custer, ss:

I, MARGARET PARKS

Publisher of the Challis Messenger, a weekly newspaper, published at Challis, Idaho, do solemnly swear that the notice hereto attached and made a part hereof, was published in the regular and entire issue of the Challis Messenger for 2 consecutive weeks, commencing with the issue dated Nov. 10

1983 and ending with the issue dated Nov. 17, 1983

Margaret Parks  
Subscribed and sworn to before this 18 day of November, 1983

Edel M. Peck  
Notary Public, residing at Challis, Idaho. My commission expires on Life

RECEIVED

NOV 21 1983

Department of Water Resources  
Southern District Office

MICROFILMED

## NOTICE OF APPLICATION FOR WATER RIGHT

Notice is hereby given that the following application(s) have been submitted for permit to appropriate the public waters of the State of Idaho:

72-7349  
U.S. DEPT. OF INTERIOR  
BUREAU OF LAND MG-MT., IDAHO STATE OFFICE,  
3380 AMERICANA TERRACE, BOISE, ID 83706

Source: SPRING trib. to CORRAL BASIN CREEK  
Date Filed: 07/21/1983  
Diversion Pt: NENE Sec 03 T 10N R 20E

Use: STOCKWATER FROM STORAGE (0.5 AF) WILDLIFE FROM STORAGE (0.5 AF) DIVERSION TO STORAGE (0.02 CFS)  
In: NENE Sec 03 T 10N R 20E

72-7348  
U.S. DEPT. OF INTERIOR  
BUREAU OF LAND MG-MT., IDAHO STATE OFFICE,  
3380 AMERICANA TERRACE, BOISE, ID 83706

Source: SPRING trib. to BROKEN WAGON CREEK  
Date Filed: 07/21/1983  
Diversion Pt: SWSE Sec 02 T 10N R 20E

Use: STOCKWATER FROM STORAGE (0.5 AF) WILDLIFE FROM STORAGE (0.5 AF) DIVERSION TO STORAGE (0.02 CFS)  
In: SWSE Sec 02 T 10N R 20E

72-7347  
U.S. DEPT. OF INTERIOR  
BUREAU OF LAND MG-MT., IDAHO STATE OFFICE,  
3380 AMERICANA TERRACE, BOISE, ID 83706

Source: SPRING trib. to HORSE BASIN CREEK  
Date Filed: 07/21/1983  
Diversion Pt: SWSE Sec 15 T 10N R 20E

Use: STOCKWATER FROM STORAGE (0.5 AF) WILDLIFE FROM STORAGE (0.5 AF) DIVERSION TO STORAGE (0.02 CFS)  
In: SWSE Sec 15 T 10N R 20E

72-7346  
U.S. DEPT. OF INTERIOR  
BUREAU OF LAND MG-MT., IDAHO STATE OFFICE,  
3380 AMERICANA TERRACE, BOISE, ID 83706

Source: SPRING trib. to CORRAL BASIN CREEK  
Date Filed: 07/21/1983  
Diversion Pt: SWNE Sec 03 T 10N R 20E

Use: STOCKWATER FROM STORAGE (0.5 AF) WILDLIFE FROM STORAGE (0.5 AF) DIVERSION TO STORAGE (0.02 CFS)  
In: SWNE Sec 03 T 10N R 20E

72-7345  
U.S. DEPT. OF INTERIOR  
BUREAU OF LAND MG-MT., IDAHO STATE OFFICE,  
3380 AMERICANA TERRACE, BOISE, ID 83706

Source: SPRING trib. to CORRAL BASIN CREEK  
Date Filed: 07/21/1983  
Diversion Pt: LOT 64 (NWNW) Sec 03 T 10N R 20E

Use: STOCKWATER FROM STORAGE (0.5 AF) WILDLIFE FROM STORAGE (0.5 AF) DIVERSION TO STORAGE (0.02 CFS)  
In: LOT 64 (NWNW) Sec 03 T 10N R 20E

72-7344  
U.S. DEPT. OF INTERIOR  
BUREAU OF LAND MG-MT., IDAHO STATE OFFICE,  
3380 AMERICANA TERRACE, BOISE, ID 83706

Source: SPRING trib. to MOSQUITO CREEK  
Date Filed: 07/23/1983  
Diversion Pt: SWSW Sec 03 T 09N R 19E

Use: STOCKWATER FROM STORAGE (0.5 AF) WILDLIFE FROM STORAGE (0.5 AF) DIVERSION TO STORAGE (0.02 CFS)  
In: SWSW Sec 03 T 09N R 19E

In: SWSW Sec 03 T 09N R 19E

72-7342  
U.S. DEPT. OF INTERIOR  
BUREAU OF LAND MG-MT., IDAHO STATE OFFICE,  
3380 AMERICANA TERRACE, BOISE, ID 83706

Source: SPRING trib. to HORSE BASIN CREEK  
Date Filed: 07/21/1983  
Diversion Pt: NESE Sec 10 T 10N R 20E

Use: STOCKWATER FROM STORAGE (0.5 AF) WILDLIFE FROM STORAGE (0.5 AF) DIVERSION TO STORAGE (0.02 CFS)  
In: NESE Sec 10 T 10N R 20E

72-7341  
U.S. DEPT. OF INTERIOR  
BUREAU OF LAND MG-MT., IDAHO STATE OFFICE,  
3380 AMERICANA TERRACE, BOISE, ID 83706

Source: GROUNDWATER  
Date Filed: 07/25/1983  
Diversion Pt: NESW Sec 22 T 11N R 18E

Use: DOMESTIC (0.02 CFS)  
In: NESW Sec 22 T 11N R 18E

72-7340  
U.S. DEPT. OF INTERIOR  
BUREAU OF LAND MG-MT., IDAHO STATE OFFICE,  
3380 AMERICANA TERRACE, BOISE, ID 83706

Source: GROUNDWATER  
Date Filed: 07/25/1983  
Diversion Pt: NWNW Sec 30 T 12N R 19E

Use: DOMESTIC (0.01 CFS)  
In: NWNW Sec 30 T 12N R 19E

72-7339  
U.S. DEPT. OF INTERIOR  
BUREAU OF LAND MG-MT., IDAHO STATE OFFICE,  
3380 AMERICANA TERRACE, BOISE, ID 83706

Source: SPRING trib. to CORRAL BASIN CREEK  
Date Filed: 08/15/1983  
Diversion Pt: SENE Sec 09 T 10N R 20E

Use: STOCKWATER FROM STORAGE (0.5 AF) WILDLIFE FROM STORAGE (0.5 AF) DIVERSION TO STORAGE (0.02 CFS)  
In: SENE Sec 09 T 10N R 20E

72-7338  
U.S. DEPT. OF INTERIOR  
BUREAU OF LAND MG-MT., IDAHO STATE OFFICE,  
3380 AMERICANA TERRACE, BOISE, ID 83706

Source: SPRING trib. to CORRAL BASIN CREEK  
Date Filed: 08/15/1983  
Diversion Pt: SWNW Sec 10 T 10N R 20E

Use: STOCKWATER FROM STORAGE (0.5 AF) WILDLIFE FROM STORAGE (0.5 AF) DIVERSION TO STORAGE (0.02 CFS)  
In: SWNW Sec 10 T 10N R 20E

72-7337  
U.S. DEPT. OF INTERIOR  
BUREAU OF LAND MG-MT., IDAHO STATE OFFICE,  
3380 AMERICANA TERRACE, BOISE, ID 83706

Source: SPRING trib. to CORRAL BASIN CREEK  
Date Filed: 08/15/1983  
Diversion Pt: SESE Sec 33 T 11N R 20E

Use: STOCKWATER FROM STORAGE (0.5 AF) WILDLIFE FROM STORAGE (0.5 AF) DIVERSION TO STORAGE (0.02 CFS)  
In: SESE Sec 33 T 11N R 20E

72-7336  
U.S. DEPT. OF INTERIOR  
BUREAU OF LAND MG-MT., IDAHO STATE OFFICE,  
3380 AMERICANA TERRACE, BOISE, ID 83706

Source: SPRING trib. to CORRAL BASIN CREEK  
Date Filed: 08/15/1983  
Diversion Pt: SENW Sec 04 T 10N R 20E

Use: STOCKWATER FROM STORAGE (0.5 AF) WILDLIFE FROM STORAGE (0.5 AF) DIVERSION TO STORAGE (0.02 CFS)

U.S. DEPT. OF INTERIOR  
BUREAU OF LAND MG-MT., IDAHO STATE OFFICE,  
3380 AMERICANA TERRACE, BOISE, ID 83706

Source: SPRING trib. to WARM SPRINGS CREEK  
Date Filed: 08/08/1983  
Diversion Pt: SWSE Sec 07 T 13N R 20E

Use: STOCKWATER (0.01 CFS) WILDLIFE (0.01 CFS)  
In: SWSE Sec 07 T 13N R 20E

72-7333  
U.S. DEPT. OF INTERIOR  
BUREAU OF LAND MG-MT., IDAHO STATE OFFICE,  
3380 AMERICANA TERRACE, BOISE, ID 83706

Source: SPRING trib. to ELLIS CREEK  
Date Filed: 08/10/1983  
Diversion Pt: SESE Sec 17 T 16N R 20E

Use: STOCKWATER FROM STORAGE (0.5 AF) STOCKWATER FROM STORAGE (0.5 AF) WILDLIFE FROM STORAGE (0.5 AF) DIVERSION TO STORAGE (0.02 CFS)  
In: SESE Sec 17 T 16N R 20E

72-7332  
U.S. DEPT. OF INTERIOR  
BUREAU OF LAND MG-MT., IDAHO STATE OFFICE,  
3380 AMERICANA TERRACE, BOISE, ID 83706

Source: UNNAMED STREAM trib. to SALMON RIVER  
Date Filed: 08/10/1983  
Diversion Pt: NWNW Sec 20 T 15N R 19E

Use: STOCKWATER FROM STORAGE (0.2 AF) STOCKWATER FROM STORAGE (0.2 AF) WILDLIFE FROM STORAGE (0.2 AF) DIVERSION TO STORAGE (0.01 CFS)  
In: NWNW Sec 20 T 15N R 19E

72-7331  
U.S. DEPT. OF INTERIOR  
BUREAU OF LAND MG-MT., IDAHO STATE OFFICE,  
3380 AMERICANA TERRACE, BOISE, ID 83706

Source: SPRING trib. to ELLIS CREEK  
Date Filed: 08/10/1983  
Diversion Pt: SWNW Sec 32 T 16N R 20E

Use: STOCKWATER FROM STORAGE (0.5 AF) STOCKWATER FROM STORAGE (0.5 AF) WILDLIFE FROM STORAGE (0.5 AF) DIVERSION TO STORAGE (0.02 CFS)  
In: SWNW Sec 32 T 16N R 20E

72-7330  
U.S. DEPT. OF INTERIOR  
BUREAU OF LAND MG-MT., IDAHO STATE OFFICE,  
3380 AMERICANA TERRACE, BOISE, ID 83706

Source: SPRING trib. to ELLIS CREEK  
Date Filed: 08/10/1983  
Diversion Pt: NWSW Sec 12 T 16N R 19E

Use: STOCKWATER FROM STORAGE (0.5 AF) STOCKWATER FROM STORAGE (0.5 AF) WILDLIFE FROM STORAGE (0.5 AF) DIVERSION TO STORAGE (0.02 CFS)  
In: NWSW Sec 12 T 16N R 19E

72-7329  
U.S. DEPT. OF INTERIOR  
BUREAU OF LAND MG-MT., IDAHO STATE OFFICE,  
3380 AMERICANA TERRACE, BOISE, ID 83706

Source: SPRING trib. to CORRAL BASIN CREEK  
Date Filed: 07/25/1983  
Diversion Pt: NWNW Sec 08 T 10N R 20E

Use: STOCKWATER FROM STORAGE (0.5 AF) WILDLIFE FROM STORAGE (0.5 AF) DIVERSION TO STORAGE (0.02 CFS)  
In: NWNW Sec 08 T 10N R 20E

72-7328  
U.S. DEPT. OF INTERIOR  
BUREAU OF LAND MG-MT., IDAHO STATE OFFICE,  
3380 AMERICANA TERRACE, BOISE, ID 83706

Source: SPRING trib. to CORRAL BASIN CREEK  
Date Filed: 07/25/1983  
Diversion Pt: NWNW Sec 08 T 10N R 20E

Use: STOCKWATER FROM STORAGE (0.5 AF) WILDLIFE FROM STORAGE (0.5 AF) DIVERSION TO STORAGE (0.02 CFS)  
In: NWNW Sec 08 T 10N R 20E



72-7328

U.S. DEPT. OF INTERIOR  
BUREAU OF LAND MG-  
MT., IDAHO STATE OFFICE,  
3380 AMERICANA TER-  
RACE, BOISE, ID 83706  
Source: SPRING trib. to  
BROKEN WAGON CREEK  
Date Filed: 07/21/1983  
Diversion Pt: SESE Sec 34 T  
11N R 20E  
Use: STOCKWATER FROM  
STORAGE (0.5 AF) WILD-  
LIFE FROM STORAGE (0.5  
AF) DIVERSION TO STOR-  
AGE (0.02 CFS)  
In: NESE Sec 34 T 11N R 20E

72-7343

U.S. DEPT. OF INTERIOR  
BUREAU OF LAND MG-  
MT., IDAHO STATE OFFICE,  
3380 AMERICANA TER-  
RACE, BOISE, ID 83706  
Source: SPRING trib. to  
CORRAL BASIN CREEK  
Date Filed: 07/25/1983  
Diversion Pt: SENW Sec 09  
T 10N R 20E  
Use: STOCKWATER FROM  
STORAGE (0.5 AF) WILD-  
LIFE FROM STORAGE (0.5  
AF) DIVERSION TO STOR-  
AGE (0.02 CFS)  
In: SENW Sec 09 T 10N R 20E

72-7320

U.S. DEPT. OF INTERIOR  
BUREAU OF LAND MG-  
MT., IDAHO STATE OFFICE,  
3380 AMERICANA TER-  
RACE, BOISE, ID 83706  
Source: SPRING trib. to  
LAKE CREEK  
Date Filed: 07/21/1983  
Diversion Pt: SESE Sec 09 T  
09N R 19E  
Use: STOCKWATER (0.01  
CFS) WILDLIFE (0.01 CFS)  
In: SESE Sec 09 T 09N R 19E

72-7319

U.S. DEPT. OF INTERIOR  
BUREAU OF LAND MG-  
MT., IDAHO STATE OFFICE,  
3380 AMERICANA TER-  
RACE, BOISE, ID 83706  
Source: SPRING trib. to  
DRY HOLLOW  
Date Filed: 07/21/1983  
Diversion Pt: NWNW Sec 32  
T 10N R 19E  
Use: STOCKWATER (0.01  
CFS) WILDLIFE (0.01 CFS)  
In: NWNW Sec 32 T 10N R  
19E

72-7312

U.S. DEPT. OF INTERIOR  
BUREAU OF LAND MG-  
MT., IDAHO STATE OFFICE,  
3380 AMERICANA TER-  
RACE, BOISE, ID 83706  
Source: SPRING trib. to  
BROKEN WAGON CREEK  
Date Filed: 08/15/1983  
Diversion Pt: NENE Sec 03  
T 10N R 20E  
Use: STOCKWATER FROM  
STORAGE (0.5 AF) WILD-  
LIFE FROM STORAGE (0.5  
AF) DIVERSION TO STOR-  
AGE (0.02 CFS)  
In: NENE Sec 03 T 10N R 20E

72-7311

U.S. DEPT. OF INTERIOR  
BUREAU OF LAND MG-  
MT., IDAHO STATE OFFICE,  
3380 AMERICANA TER-  
RACE, BOISE, ID 83706  
Source: SPRING trib. to  
SINKS  
Date Filed: 07/25/1983  
Diversion Pt: NWSE Sec 27  
T 11N R 20E  
Use: STOCKWATER (0.01  
CFS) WILDLIFE (0.01 CFS)  
In: NESE Sec 27 T 11N R 20E

72-7327

U.S. DEPT. OF INTERIOR  
BUREAU OF LAND MG-  
MT., IDAHO STATE OFFICE,  
3380 AMERICANA TER-  
RACE, BOISE, ID 83706  
Source: GROUNDWATER  
Date Filed: 07/25/1983  
Diversion Pt: NENE Sec 19  
T 12N R 19E  
Use: DOMESTIC (0.01 CFS)  
In: NWNE Sec 19 T 12N R 19E

72-7326

U.S. DEPT. OF INTERIOR  
BUREAU OF LAND MG-  
MT., IDAHO STATE OFFICE,  
3380 AMERICANA TER-  
RACE, BOISE, ID 83706  
Source: SPRING trib. to  
SPAR CANYON CREEK  
Date Filed: 07/25/1983  
Diversion Pt: NESW Sec 20  
T 11N R 19E  
Use: STOCKWATER (0.01  
CFS) WILDLIFE (0.01 CFS)  
In: NESW Sec 20 T 11N R 19E

72-7325

U.S. DEPT. OF INTERIOR  
BUREAU OF LAND MG-  
MT., IDAHO STATE OFFICE,  
3380 AMERICANA TER-  
RACE, BOISE, ID 83706  
Source: SPRING trib. to  
DRY HOLLOW  
Date Filed: 07/25/1983  
Diversion Pt: NWNW Sec 31  
T 10N R 19E  
Use: STOCKWATER (0.01  
CFS) WILDLIFE (0.01 CFS)  
In: NWNW Sec 31 T 10N R  
19E

72-7324

U.S. DEPT. OF INTERIOR  
BUREAU OF LAND MG-  
MT., IDAHO STATE OFFICE,  
3380 AMERICANA TER-  
RACE, BOISE, ID 83706  
Source: SPRING trib. to  
MALM GULCH  
Date Filed: 07/25/1983  
Diversion Pt: SESW Sec 25 T  
12N R 19E  
Use: STOCKWATER (0.01  
CFS) WILDLIFE (0.01 CFS)  
In: SESE Sec 25 T 12N R  
19E

72-7323

U.S. DEPT. OF INTERIOR  
BUREAU OF LAND MG-  
MT., IDAHO STATE OFFICE,  
3380 AMERICANA TER-  
RACE, BOISE, ID 83706  
Source: SPRING trib. to  
SALMON RIVER, EAST  
FORK  
Date Filed: 07/25/1983  
Diversion Pt: NWNW Sec 30  
T 11N R 19E  
Use: STOCKWATER (0.01  
CFS) WILDLIFE (0.01 CFS)  
In: NWNE Sec 25 T 11N R  
18E NWNW Sec 30 T 11N R 19E

72-7322

U.S. DEPT. OF INTERIOR  
BUREAU OF LAND MG-  
MT., IDAHO STATE OFFICE,  
3380 AMERICANA TER-  
RACE, BOISE, ID 83706  
Source: SPRING trib. to MC  
GOWAN CREEK  
Date Filed: 07/25/1983  
Diversion Pt: SWNW Sec 29  
T 12N R 21E  
Use: STOCKWATER (0.01  
CFS) WILDLIFE (0.01 CFS)  
In: SWNE Sec 24 T 12N R 20E  
LOT 01 Sec 30 T 12N R 21E  
SWNW Sec 29 T 12N R 21E

72-7321

U.S. DEPT. OF INTERIOR  
BUREAU OF LAND MG-  
MT., IDAHO STATE OFFICE,  
3380 AMERICANA TER-  
RACE, BOISE, ID 83706  
Source: SPRING trib. to  
LONE PINE CREEK  
Date Filed: 07/25/1983  
Diversion Pt: SENE Sec 13 T  
12N R 19E  
Use: STOCKWATER (0.02  
CFS) WILDLIFE (0.01 CFS)  
In: NESW Sec 01 T 12N R 19E  
NWSE Sec 02 T 12N R 19E

11\*

U.S. DEPT. OF INTERIOR  
BUREAU OF LAND MG-  
MT., IDAHO STATE OFFICE,  
3380 AMERICANA TER-  
RACE, BOISE, ID 83706  
Source: SPRING trib. to  
BROKEN WAGON CREEK  
Date Filed: 07/21/1983  
Diversion Pt: NWNE Sec 35  
T 11N R 20E  
Use: STOCKWATER (0.04  
CFS) WILDLIFE (0.01 CFS)  
In: SENE Sec 06 T 10N R 21E  
NWSE Sec 08 T 10N R 21E  
NWNE Sec 35 T 11N R 20E  
SWNE Sec 36 T 11N R 20E  
SENE Sec 31 T 11N R 21E

72-7317

U.S. DEPT. OF INTERIOR  
BUREAU OF LAND MG-  
MT., IDAHO STATE OFFICE,  
3380 AMERICANA TER-  
RACE, BOISE, ID 83706  
Source: SPRING trib. to  
CORRAL BASIN CREEK  
Date Filed: 08/15/1983  
Diversion Pt: NESW Sec 04  
T 10N R 20E  
Use: STOCKWATER FROM  
STORAGE (0.5 AF) WILD-  
LIFE FROM STORAGE (0.5  
AF) DIVERSION TO STOR-  
AGE (0.02 CFS)  
In: NWSW Sec 04 T 10N R  
20E

72-7316

U.S. DEPT. OF INTERIOR  
BUREAU OF LAND MG-  
MT., IDAHO STATE OFFICE,  
3380 AMERICANA TER-  
RACE, BOISE, ID 83706  
Source: SPRING trib. to  
CORRAL BASIN CREEK  
Date Filed: 08/15/1983  
Diversion Pt: SWNW Sec 33  
T 11N R 20E  
Use: STOCKWATER FROM  
STORAGE (0.5 AF) WILD-  
LIFE FROM STORAGE (0.5  
AF) DIVERSION TO STOR-  
AGE (0.02 CFS)  
In: SWNW Sec 33 T 11N R  
20E

72-7315

U.S. DEPT. OF INTERIOR  
BUREAU OF LAND MG-  
MT., IDAHO STATE OFFICE,  
3380 AMERICANA TER-  
RACE, BOISE, ID 83706  
Source: SPRING trib. to  
HORSE BASIN CREEK  
Date Filed: 08/15/1983  
Diversion Pt: NENE Sec 27  
T 10N R 20E  
Use: STOCKWATER FROM  
STORAGE (0.5 AF) WILD-  
LIFE FROM STORAGE (0.5  
AF) DIVERSION TO STOR-  
AGE (0.02 CFS)  
In: NWNE Sec 27 T 10N R  
20E

72-7314

U.S. DEPT. OF INTERIOR  
BUREAU OF LAND MG-  
MT., IDAHO STATE OFFICE,  
3380 AMERICANA TER-  
RACE, BOISE, ID 83706  
Source: SPRING trib. to  
BROKEN WAGON CREEK  
Date Filed: 08/15/1983  
Diversion Pt: SENW Sec 02  
T 10N R 20E  
Use: STOCKWATER FROM  
STORAGE (0.5 AF) WILD-  
LIFE FROM STORAGE (0.5  
AF) DIVERSION TO STOR-  
AGE (0.02 CFS)  
In: SWNE Sec 02 T 10N R 20E

72-7313

U.S. DEPT. OF INTERIOR  
BUREAU OF LAND MG-  
MT., IDAHO STATE OFFICE,  
3380 AMERICANA TER-  
RACE, BOISE, ID 83706  
Source: SPRING trib. to  
BROKEN WAGON CREEK  
Date Filed: 08/15/1983  
Diversion Pt: SWNW Sec 02  
T 10N R 20E  
Use: STOCKWATER FROM  
STORAGE (0.5 AF) WILD-  
LIFE FROM STORAGE (0.5  
AF) DIVERSION TO STOR-  
AGE (0.02 CFS)  
In: SWNW Sec 02 T 10N R  
20E

72-7310

U.S. DEPT. OF INTERIOR  
BUREAU OF LAND MG-  
MT., IDAHO STATE OFFICE,  
3380 AMERICANA TER-  
RACE, BOISE, ID 83706  
Source: SPRING trib. to  
SALMON RIVER, EAST  
FORK  
Date Filed: 07/21/1983  
Diversion Pt: NENE Sec 15  
T 10N R 18E

Use: STOCKWATER (0.01  
CFS) WILDLIFE (0.01 CFS)  
In: SENE Sec 15 T 10N R 18E

72-7309

U.S. DEPT. OF INTERIOR  
BUREAU OF LAND MG-  
MT., IDAHO STATE OFFICE,  
3380 AMERICANA TER-  
RACE, BOISE, ID 83706  
Source: SPRING trib. to  
SALMON RIVER, EAST  
FORK  
Date Filed: 07/21/1983  
Diversion Pt: NENE Sec 08  
T 09N R 18E

Use: STOCKWATER (0.01  
CFS) WILDLIFE (0.01 CFS)  
In: SESE Sec 08 T 09N R 18E

72-7308

U.S. DEPT. OF INTERIOR  
BUREAU OF LAND MG-  
MT., IDAHO STATE OFFICE,  
3380 AMERICANA TER-  
RACE, BOISE, ID 83706  
Source: STEVENS GULCH  
trib. to SALMON RIVER  
Date Filed: 08/10/1983  
Diversion Pt: SESE Sec 20 T  
15N R 19E

Use: STOCKWATER FROM  
STORAGE (0.2 AF) STOCK-  
WATER FROM STORAGE  
(0.2 AF) WILDLIFE FROM  
STORAGE (0.2 AF) DIVER-  
SION TO STORAGE (0.01  
CFS)  
In: SESE Sec 20 T 15N R 19E

71-7084

MC COMB, ALAN D.  
MC COMBS, JEANNE M.  
BOX 298, GOODING, ID  
83330  
Source: HELL ROARING  
CREEK trib. to SALMON  
RIVER

Diversion Pt: SENW Sec 17  
T 08N R 14E  
Use: IRRIGATION (0.06  
CFS) DOMESTIC (0.02 CFS)  
In: NESW Sec 17 T 08N R 14E  
FOR 2 ACRES

If issued, the permit(s) will  
be subject to all prior water  
rights. Protests against the  
granting of any permit must be  
filed with the Director of the  
Idaho Department of Water  
Resources, 1041 Blue Lakes  
Blvd. North, Twin Falls, Idaho  
83301 and received on or before  
NOVEMBER 27, 1983.

A. KENNETH DUNN

Director

Published 11/10 &amp; 11/17/1983

72-7335

U.S. DEPT. OF INTERIOR  
BUREAU OF LAND MG-  
MT., IDAHO STATE OFFICE,  
3380 AMERICANA TER-  
RACE, BOISE, ID 83706  
Source: SPRING trib. to  
HORSE BASIN CREEK  
Date Filed: 08/15/1983  
Diversion Pt: SWSW Sec 21  
T 10N R 20E

Use: STOCKWATER FROM  
STORAGE (0.5 AF) WILD-  
LIFE FROM STORAGE (0.5  
AF) DIVERSION TO STOR-  
AGE (0.02 CFS)  
In: SWSW Sec 23 T 10N R 20E



State of Idaho

# DEPARTMENT OF WATER RESOURCES

STATE OFFICE, 450 W. State Street, Boise, Idaho

CECIL D. ANDRUS

Governor

A. KENNETH DUNN

Director

Mailing address:

Statehouse

Boise, Idaho 83720

(208) 334-4440

February 23, 1987

RE: Permit Nos. 72-7308/7316/7329/7330/7331/7332/7333/7335/7336/  
7337/7338/7339/7342/7343/7344/7345/7346/7348/7349/7357

Bureau of Land Mgmt.  
Idaho State Office  
3380 Americana Terrace  
Boise, ID 83706

Gentlemen:

Enclosed herewith are copies of the Water Right Licenses issued on the  
above referenced permits.

Sincerely,

JIM JOHNSON  
Water Rights Supervisor

JJ:sc

Enclosures

MICROFILMED  
MAR 09 1987





State of Idaho

## DEPARTMENT OF WATER RESOURCES

STATE OFFICE, 450 W. State Street, Boise, Idaho

CECIL D. ANDRUS  
Governor

A. KENNETH DUNN  
Director

Mailing address:  
Statehouse  
Boise, Idaho 83720  
(208) 334-4440

February 2, 1987

RE: Permit Nos. 72-7308/7316/7329/7330/7331/7332/7333/7335/7336/7337/  
7338/7339/7342/7343/7344/7345/7346/7348/7349/7357

Bureau of Land Mgmt.  
3380 Americana Terrace  
Boise, ID 83706

Gentlemen:

Enclosed are draft copies of the licenses proposed to be issued on the above referenced water rights.

If you do not concur with the information shown on the draft licenses, please advise the Department within ten (10) days. If you have any questions, please let us know; otherwise, the licenses will be issued as identified on the draft copies.

Sincerely,

JIM JOHNSON  
Water Rights Supervisor

JJ:sc

Enclosures

RECEIVED

MAR 09 1987

MEMORANDUM

TO: Files

FROM: Loren Holmes

RE: BLM Permits

During the field examination conference with BLM staff, it was discovered that the permits did not accurately describe the stockwater and livestock developments.

The storage ponds constructed were actually on-stream, not off-stream as the permits indicate and the animals do use the natural channels as a water supply. Therefore, the diversion to storage component is used as natural flow diversion on the field exams.

No amendment of the permits are recommended.

RECORDED  
MAR 09 1987



RECEIVED  
JUN 30 1986

State of Idaho  
DEPARTMENT OF WATER RESOURCES  
FIELD REPORT

Department of Water Resources

72-7331

Permit No.

CONTACT WITH PERMIT HOLDER

	DATE	INITIALS	REMARKS
<input type="checkbox"/> Appointment letter mailed:			
<input checked="" type="checkbox"/> Telephone call made: (List Telephone No. used)			756-2201
<input checked="" type="checkbox"/> Appointment scheduled for: (Date, time, location)	11-13-85	YB	Salmon BLM office

EXAMINATION

Bill Osborne - Range Con.  
Lyle Lewis - Hydrologist  
Loren Anderson - Wildlife  
Date 11-13-85 Accompanied by Gerry Gregson - Wildlife Total Q measured  
If source is surface water, estimate total flow of source  
Methods of measurement Meets Permit requirements?

Measurement calculations:

$.02 \text{ cfs} \times 1.98 \times 92 \text{ days/ann} = 3.6 \text{ AF/ann}$

WELL/DIVERSION* NO.	HP	MOTOR MAKE	MOTOR SERIAL NO.	PUMP MAKE	PUMP SERIAL NO.	MEASURING DEVICE TYPE	CONDITION OF MEAS. DEV.	REMARKS

System Description Excavated earth catchment basin

Project Name Sheepskin Waterhole JDR # 4185

\*Code with map on reverse side. Disregard code if only one.

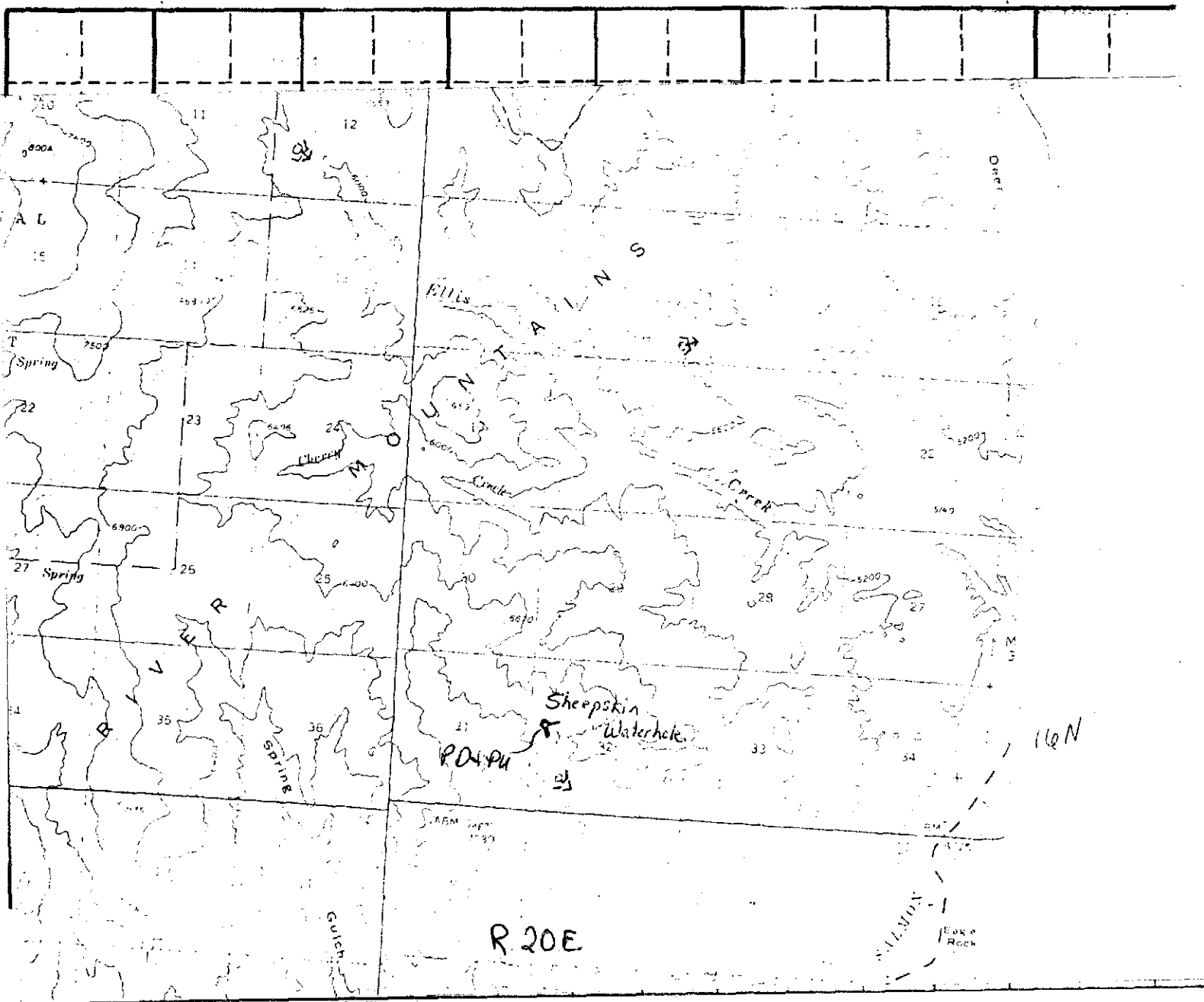
RECOMMENDED AMOUNTS

USE	Irrigation requirement =		AFA/Acre	
	Q (cfs)	V (afa)	FROM	TO
Wildlife Storage		1.0 AF	1/1	12/31
Stockwater Storage		1.0 AF	1/1	12/31
Wildlife	.01 cfs	2 AFA	1/1	12/31
Stockwater	.02 cfs	2.5 AFA	5/1	12/31
Total	.02 cfs	2.7 AFA		

Remarks Misc. Wildlife use 30 gpd x 365 days/ann = 10,950 gal/ann  
40 deer @ 2 gpd/hd x 166 days/ann (11/15 - 5/1) = 13,280 gal/ann  
30 Antelope " x 214 days/ann (4/15 - 1/15) = 12,840 " "  
37,070 " " ÷ 325,851<sup>90%</sup> AF = 0.1138 AF/ann

1400 cattle @ 12 gpd/hd x 46 days/ann (5/1 - 5/31 + 1/1 - 1/15) = 772,800 gal/ann  
51 horses @ 12 gpd/hd x 92 days/ann (5/1 - 5/31 + 1/1 - 12/31) = 561,304 " "  
Total Stock wdr required 829,104 " " ÷ 325,851<sup>90%</sup> AF = 2.544 AF/ann  
No Dimensions Known Allow Antelope as per LH

# MAP (Attach Aerial Photo)



Point(s) of diversion: SW 1/4 NW 1/4 sec 32, T. 16N. R. 20E.

## Place(s) of Use

TWP.	RGE.	SEC.	NE 1/4				NW 1/4				SW 1/4				SE 1/4				TOTALS
			NEX	NWX	SWX	SEX	NEX	NWX	SWX	SEX	NEX	NWX	SWX	SEX	NEX	NWX	SWX	SEX	
16N	20E	32							W.S										

## Recommended Amendments:

- ☐ Change P.D. as reflected above
 ☐ Add P.D. as reflected above
 ☒ None
- ☐ Change P.U. as reflected above
 ☐ Add P.U. as reflected above
 ☐ Other

**MICROFILMED**

Examiner's Signature James O. Blair  
 Checked by J. F. Stanton ADM  
 Approved by Jim

Date 4-10-86  
 Date 4-21-86  
 Date 11-20-86

DEPARTMENT OF WATER RESOURCES  
Southern Region1041 Blue Lakes Blvd. N.  
Twin Falls, Idaho 83301  
(208) 734-3578

JUNE 13, 1984

BLM - SALMON DISTRICT  
BOX 430  
SALMON

ID 83467

RE: Permit No. 72-7231

Dear Permit Holder:

We acknowledge receipt of your statement submitted as proof of beneficial use for the above referenced permit.

Before a license can be issued, a field examination must be made by a representative of this department.

A field examiner will contact you to arrange to examine your system.

If you have any questions regarding the field examination, please contact this office by phone at 734-3578 or in person at our office at 1041 Blue Lakes Blvd. N. Twin Falls, Idaho.

Sincerely,  
s/Mary A. Newby  
Secretary

MICROFILMED

MAR 09 1987





State of Idaho

## DEPARTMENT OF WATER RESOURCES

STATE OFFICE, 450 W. State Street, Boise, Idaho

JOHN V. EVANS

Governor

A. KENNETH DUNN

Director

Mailing address:  
Statehouse  
Boise, Idaho 83720  
(208) 334-4440

June 4, 1984

Kenneth S. Walker, District Manager  
Bureau of Land Management  
Box 430  
Salmon, ID 83467

Dear Mr. Walker:

Re: Water Rights - See attached sheet

This office acknowledges receipt of the statement of beneficial use postcards submitted for the attached list of water rights.

Before licenses can be issued, a field examination must be made by a representative of this department. We cannot tell just when these examinations will be made, but our examiner will contact you to schedule the exams at a convenient time.

If you have any questions regarding the field examinations, please contact our Southern Regional office at 734-3578.

Sincerely,

RITA I. FLECK  
Secretary/Records Manager

Attachment

cc: Southern Region



STATEMENTS OF BENEFICIAL USE POSTCARDS RECEIVED FROM THE

BUREAU OF LAND MANAGEMENT

5-16-84

Southern Region-IDWR

72-7297  
72-7298  
72-7299

72-7308  
to  
72-7339

72-7341  
72-7342  
72-7343

72-7345  
72-7346  
72-7347  
72-7348  
72-7349

73-7078  
73-7079  
73-7080  
73-7081  
73-7082  
73-7083

74-7212  
74-7213  
74-7214  
74-7215  
74-7216  
74-7217

74-7221  
74-7225  
74-7226

75-7393  
75-7396  
75-7397  
75-7399

CONFIDENTIAL

# DEPARTMENT OF WATER RESOURCES

The Idaho Department of Water Resources will consider this card as a statement that the permit holder(s) has completed development to the extent shown below of Permit No. 72-7331.

Name(s) of Permit Holder: USDI Bureau of Land Management

Post Office Address: P.O. Box 430  
Salmon, ID 83467

Tel. No. (208) 750-2201

Source of Water: Spring

Extent of Use: ☐ Domestic (number of households)  
☒ Stockwater 1400 cattle, 51 horses (number and type of stock)  
☐ Irrigation (acres)  
☒ Other wildlife- bighorn sheep, deer, elk, antelope bear, mountain lion

Measurement Device: Required? ☐ Yes ☒ No Installed? ☐ Yes ☒ No

Access Port: Required? ☐ Yes ☒ No Installed? ☐ Yes ☒ No

The above information is a true statement of the extent to which the above numbered permit has been developed.

DISTRICT MANAGER

5-14-84

te

Samuel B. Walker  
Signature of Permit Holder

MICROFILMED



Bureau of Land Management

P.O. Box 430

Salmon, Idaho 83467

PLACE  
POSTAGE AND FEES PAID  
U.S. DEPARTMENT OF THE INTERIOR  
HERE  
INT 415

RECEIVED

MAY 16 1984



IDAHO DEPARTMENT OF WATER RESOURCES

STATEHOUSE

BOISE, IDAHO 83720

RECEIVED

Department of Water Resources



State of Idaho

## DEPARTMENT OF WATER RESOURCES

STATE OFFICE, 450 W. State Street, Boise, Idaho

JOHN V. EVANS  
Governor

A. KENNETH DUNN  
Director

Mailing address:  
Statehouse  
Boise, Idaho 83720  
(208) 334-4440

January 11, 1984

RE: Application for Permit No's. 72-7308/7312/7313/7314/7315/  
7316/7317/7330/7331/7332/7333/7334/7335/7336/7337/7338/  
7339, 73-7078/7079/7080/7081/7082/7083, 74-7212/7213/  
7214/7215/7216/7217/7221/7224/7226, 75-7393/7396/7397/  
7399/7402, 79-7143

U.S. Dept. of Interior  
Bureau of Land Management  
Idaho State Office  
3380 Americana Terrace  
Boise, ID 83706

Gentlemen:

Enclosed are copies of your approved Applications for Permit. We direct your attention to the conditions of approval on the fourth pages.

The 1982 Idaho Legislature added a requirement that as a permit holder you must commence the excavation or construction of diverting works within one year of the date the permits were issued, and you must proceed diligently until the projects are completed. The enclosed blue cards must be completed and returned to this office as soon as you commence construction, no later than one year from the date the permits were approved.

We have enclosed instructions entitled "Making Proof of Beneficial Use". Please read the instructions carefully since you must take further action to develop these permits into licenses.

Sincerely,

DAVID R. TUTHILL, JR., P.E.  
Supervisor, Water Allocation Section

DRT:sc

Enclosures

RECEIVED

NOTICE OF APPLICATION FOR WATER RIGHT

Notice is hereby given that the following application(s) have been submitted for permit to appropriate the public waters of the State of Idaho:

22-2331..

U.S. DEPT. OF INTERIOR

BUREAU OF LAND MGMT., IDAHO STATE OFFICE, 3388 AMERICANA TERRACE,  
BOISE, ID 83706

Source: SPRING trib. to ELLIS CREEK

Date Filed: 08/10/1983

Diversion Pt: SWNW Sec 32 T 16N R 20E

Use: STOCKWATER FROM STORAGE	(0.5 AF)
STOCKWATER FROM STORAGE	(0.5 AF)
WILDLIFE FROM STORAGE	(0.5 AF)
DIVERSION TO STORAGE	(0.02 CFS)

In: SWNW Sec 32 T 16N R 20E

If issued, the permit(s) will be subject to all prior water rights. Protests against the granting of any permit must be filed with the Director of the Idaho Department of Water Resources, 1041 Blue Lakes Blvd. North, Twin Falls, Idaho 83301 and received on or before NOVEMBER 23, 1983.

A. KENNETH DUNN

Director

Published 11/10 & 11/17/83.

MICROFILMED



STATE OF IDAHO  
DEPARTMENT OF WATER RESOURCES  
Southern Region

---

1041 Blue Lakes Blvd N.  
Twin Falls, Idaho 83301  
(208) 734-3578

OCTOBER 31, 1983

Custer Publishing Company  
P. O. Box 405  
Challis, Idaho 83226

Gentlemen:

Enclosed you will find a legal notice which we wish to have published on the dates indicated (once a week for two consecutive weekly issues) in your newspaper. We have allowed ample time for you to submit a galley proof to this office for review before the first publication date. If you cannot publish the notice on the proposed dates, please contact us immediately.

An affidavit of publication must be submitted to the Department along with the publication bill. Your cooperation is appreciated.

Please send the affidavit of publication and publication billing to this office before NOVEMBER 28, 1983.

Yours truly,

Mary A. Newby  
Secretary

Encl.

RECEIVED

State of Idaho  
Department of Water Resources

APPLICATION FOR PERMIT ANALYSIS SHEET BLM

INITIAL REVIEW BY: JF Stanton

APPLICATION NUMBER: 72-7331

CHECK:

- ☐ Source.
- ☐ Point of diversion.
- ☐ County.
- ☐ Quantity of water and period of use.
- ☐ Description of diverting works.
- ☐ Time required for beneficial use of water.
- ☐ Place of use or acres irrigated.
- ☐ Map.
- ☐ Signature.
- ☐ Fee.

Field check by: \_\_\_\_\_

Date: \_\_\_\_\_

Comments: \_\_\_\_\_

- ☐ Yes ☐ No Field check required.
- ☐ Yes ☐ No Critical groundwater area.
- ☐ Yes ☐ No Request dam safety information. Sent by: \_\_\_\_\_ Date: \_\_\_\_\_
- ☒ Yes ☐ No\* In form to receipt.

\*REQUEST THE FOLLOWING ADDITIONAL INFORMATION FROM THE APPLICANT: \_\_\_\_\_

SEND COPIES TO:

- ☐ Idaho State Health Department. Copies sent by: \_\_\_\_\_ Date: \_\_\_\_\_
- ☐ Idaho Fish and Game Department.
- ☐ Idaho Department of Lands.
- ☐ U.S. Bureau of Land Management.
- ☐ U.S. Forest Service.
- ☐ Other \_\_\_\_\_

PROCESSING:

- ☐ Yes ☒ No Platted by: JF Map No. T-25
- ☐ Yes ☐ No Other rights on same place of use. N/A
- ☒ Yes ☐ No\* In form for advertising. Final date for protests: 11/28/83
- ☐ Yes ☒ No Protests received. If yes, record information on 4th page of application.

FINAL REGIONAL PROCESSING REVIEW:

- ☒ Affidavit of publication received. Date: 11/21/83
- ☒ Application published correctly. If not, record action taken: \_\_\_\_\_
- ☒ Fee amount, receipt date & number, recorded on application.
- ☒ Publication dates and paper, recorded on application.
- ☒ Protests, dates, withdrawal, etc., recorded on application.
- ☒ Recommendation & initial, recorded on application.
- ☐ Yes ☒ No Measuring device required.
- ☐ Yes ☒ No Access port required.
- ☐ Yes ☒ No Will water be delivered by watermaster? If yes, what district? \_\_\_\_\_
- ☒ 8/10/83 Date of priority recommended.
- Special conditions of approval or cover letter. 26

By: ADM

Date: 11/30/83

STATE OFFICE REVIEW:

L17

26

- ☐ See attached sheet for more information.

By: EW

Date: 12/30/83

MICROFILMED