

15' 719 440 000 FEET

1.6 MI. TO U.S. 93 ALT. CLAYTON 24 MI

R. 19 E

723

724

10'

726

727

(LONE PINE PEAK)

3172

SCALE 1:62500

Mapped, edited, and published by the Geological Survey

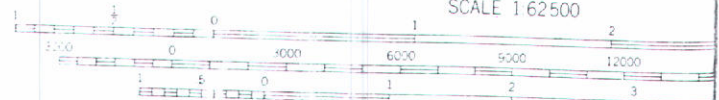
Control by USGS and USC&GS

Topography from aerial photographs by photogrammetric methods

Aerial photographs taken 1954. Advance field check 1956

Polyconic projection. 1927 North American datum

10,000



AMCR

AFFIDAVIT OF PUBLICATION

State of Idaho, County of Custer, ss:

I, MARGARET PARKS

Publisher of the Challis Messenger, a weekly newspaper, published at Challis, Idaho, do solemnly swear that the notice hereto attached and made a part hereof, was published in the regular and entire issue of the Challis Messenger for 2 consecutive weeks, commencing with the issue dated Nov. 10

1983 and ending with the issue dated Nov. 17, 1983

Subscribed and sworn to before this 18 day of November, 1983

Ethel M. Peck
Notary Public, residing at Challis, Idaho. My commission expires on Life

RECEIVED

NOV 21 1983

Department of Water Resources
Southern District Office

NOTICE OF APPLICATION FOR WATER RIGHT

Notice is hereby given that the following application(s) have been submitted for permit to appropriate the public waters of the State of Idaho:

72-7349

U.S. DEPT. OF INTERIOR
BUREAU OF LAND MG-MT., IDAHO STATE OFFICE,
3380 AMERICANA TERRACE, BOISE, ID 83706

Source: SPRING trib. to CORRAL BASIN CREEK
Date Filed: 07/21/1983
Diversion Pt: NENE Sec 03 T 10N R 20E

Use: STOCKWATER FROM STORAGE (0.5 AF) WILDLIFE FROM STORAGE (0.5 AF) DIVERSION TO STORAGE (0.02 CFS)

In: NENE Sec 03 T 10N R 20E

72-7348

U.S. DEPT. OF INTERIOR
BUREAU OF LAND MG-MT., IDAHO STATE OFFICE,
3380 AMERICANA TERRACE, BOISE, ID 83706

Source: SPRING trib. to BROKEN WAGON CREEK
Date Filed: 07/21/1983
Diversion Pt: SWSE Sec 02 T 10N R 20E

Use: STOCKWATER FROM STORAGE (0.5 AF) WILDLIFE FROM STORAGE (0.5 AF) DIVERSION TO STORAGE (0.02 CFS)

In: SWSE Sec 02 T 10N R 20E

72-7347

U.S. DEPT. OF INTERIOR
BUREAU OF LAND MG-MT., IDAHO STATE OFFICE,
3380 AMERICANA TERRACE, BOISE, ID 83706

Source: SPRING trib. to HORSE BASIN CREEK
Date Filed: 07/21/1983
Diversion Pt: SWSE Sec 15 T 10N R 20E

Use: STOCKWATER FROM STORAGE (0.5 AF) WILDLIFE FROM STORAGE (0.5 AF) DIVERSION TO STORAGE (0.02 CFS)

In: SWSE Sec 15 T 10N R 20E

72-7346

U.S. DEPT. OF INTERIOR
BUREAU OF LAND MG-MT., IDAHO STATE OFFICE,
3380 AMERICANA TERRACE, BOISE, ID 83706

Source: SPRING trib. to CORRAL BASIN CREEK
Date Filed: 07/21/1983
Diversion Pt: SWNE Sec 03 T 10N R 20E

Use: STOCKWATER FROM STORAGE (0.5 AF) WILDLIFE FROM STORAGE (0.5 AF) DIVERSION TO STORAGE (0.02 CFS)

In: SWNE Sec 03 T 10N R 20E

72-7345

U.S. DEPT. OF INTERIOR
BUREAU OF LAND MG-MT., IDAHO STATE OFFICE,
3380 AMERICANA TERRACE, BOISE, ID 83706

Source: SPRING trib. to CORRAL BASIN CREEK
Date Filed: 07/21/1983
Diversion Pt: LOT 04 (NWNW) Sec 03 T 10N R 20E

Use: STOCKWATER FROM STORAGE (0.5 AF) WILDLIFE FROM STORAGE (0.5 AF) DIVERSION TO STORAGE (0.02 CFS)

In: LOT 04 (NWNW) Sec 03 T 10N R 20E

74-7344

U.S. DEPT. OF INTERIOR
BUREAU OF LAND MG-MT., IDAHO STATE OFFICE,
3380 AMERICANA TERRACE, BOISE, ID 83706

Source: SPRING trib. to MOSQUITO CREEK
Date Filed: 07/25/1983
Diversion Pt: SWSW Sec 03 T 09N R 19E

Use: STOCKWATER FROM STORAGE (0.5 AF) WILDLIFE FROM STORAGE (0.5 AF) DIVERSION TO STORAGE (0.02 CFS)

In: SWSW Sec 03 T 09N R 19E

72-7342

U.S. DEPT. OF INTERIOR
BUREAU OF LAND MG-MT., IDAHO STATE OFFICE,
3380 AMERICANA TERRACE, BOISE, ID 83706

Source: SPRING trib. to HORSE BASIN CREEK
Date Filed: 07/21/1983
Diversion Pt: NESE Sec 10 T 10N R 20E

Use: STOCKWATER FROM STORAGE (0.5 AF) WILDLIFE FROM STORAGE (0.5 AF) DIVERSION TO STORAGE (0.02 CFS)

In: NESE Sec 10 T 10N R 20E

72-7341

U.S. DEPT. OF INTERIOR
BUREAU OF LAND MG-MT., IDAHO STATE OFFICE,
3380 AMERICANA TERRACE, BOISE, ID 83706

Source: GROUNDWATER
Date Filed: 07/25/1983
Diversion Pt: NESW Sec 22 T 11N R 18E

Use: DOMESTIC (0.02 CFS)

In: NESW Sec 22 T 11N R 18E

72-7340

U.S. DEPT. OF INTERIOR
BUREAU OF LAND MG-MT., IDAHO STATE OFFICE,
3380 AMERICANA TERRACE, BOISE, ID 83706

Source: GROUNDWATER
Date Filed: 07/25/1983
Diversion Pt: NWNW Sec 30 T 12N R 19E

Use: DOMESTIC (0.01 CFS)

In: NWNW Sec 30 T 12N R 19E

72-7339

U.S. DEPT. OF INTERIOR
BUREAU OF LAND MG-MT., IDAHO STATE OFFICE,
3380 AMERICANA TERRACE, BOISE, ID 83706

Source: SPRING trib. to CORRAL BASIN CREEK
Date Filed: 08/15/1983
Diversion Pt: SENE Sec 09 T 10N R 20E

Use: STOCKWATER FROM STORAGE (0.5 AF) WILDLIFE FROM STORAGE (0.5 AF) DIVERSION TO STORAGE (0.02 CFS)

In: SENE Sec 09 T 10N R 20E

72-7338

U.S. DEPT. OF INTERIOR
BUREAU OF LAND MG-MT., IDAHO STATE OFFICE,
3380 AMERICANA TERRACE, BOISE, ID 83706

Source: SPRING trib. to CORRAL BASIN CREEK
Date Filed: 08/15/1983
Diversion Pt: SWNW Sec 10 T 10N R 20E

Use: STOCKWATER FROM STORAGE (0.5 AF) WILDLIFE FROM STORAGE (0.5 AF) DIVERSION TO STORAGE (0.02 CFS)

In: SWNW Sec 10 T 10N R 20E

72-7337

U.S. DEPT. OF INTERIOR
BUREAU OF LAND MG-MT., IDAHO STATE OFFICE,
3380 AMERICANA TERRACE, BOISE, ID 83706

Source: SPRING trib. to CORRAL BASIN CREEK
Date Filed: 08/15/1983
Diversion Pt: SESE Sec 33 T 11N R 20E

Use: STOCKWATER FROM STORAGE (0.5 AF) WILDLIFE FROM STORAGE (0.5 AF) DIVERSION TO STORAGE (0.02 CFS)

In: SESE Sec 33 T 11N R 20E

72-7336

U.S. DEPT. OF INTERIOR
BUREAU OF LAND MG-MT., IDAHO STATE OFFICE,
3380 AMERICANA TERRACE, BOISE, ID 83706

Source: SPRING trib. to CORRAL BASIN CREEK
Date Filed: 08/15/1983
Diversion Pt: SENW Sec 04 T 10N R 20E

Use: STOCKWATER FROM STORAGE (0.5 AF) WILDLIFE FROM STORAGE (0.5 AF) DIVERSION TO STORAGE (0.02 CFS)

In: SENW Sec 04 T 10N R 20E

U.S. DEPT. OF INTERIOR
BUREAU OF LAND MG-MT., IDAHO STATE OFFICE,
3380 AMERICANA TERRACE, BOISE, ID 83706

Source: SPRING trib. to WARM SPRINGS CREEK
Date Filed: 08/08/1983
Diversion Pt: SWSE Sec 07 T 13N R 20E

Use: STOCKWATER (0.01 CFS) WILDLIFE (0.01 CFS)

In: SWSE Sec 07 T 13N R 20E

72-7333

U.S. DEPT. OF INTERIOR
BUREAU OF LAND MG-MT., IDAHO STATE OFFICE,
3380 AMERICANA TERRACE, BOISE, ID 83706

Source: SPRING trib. to ELLIS CREEK
Date Filed: 08/10/1983
Diversion Pt: SESE Sec 17 T 16N R 20E

Use: STOCKWATER FROM STORAGE (0.5 AF) STOCKWATER FROM STORAGE (0.5 AF) WILDLIFE FROM STORAGE (0.5 AF) DIVERSION TO STORAGE (0.02 CFS)

In: SESE Sec 17 T 16N R 20E

72-7332

U.S. DEPT. OF INTERIOR
BUREAU OF LAND MG-MT., IDAHO STATE OFFICE,
3380 AMERICANA TERRACE, BOISE, ID 83706

Source: UNNAMED STREAM trib. to SALMON RIVER
Date Filed: 08/10/1983
Diversion Pt: NWNW Sec 20 T 15N R 19E

Use: STOCKWATER FROM STORAGE (0.2 AF) STOCKWATER FROM STORAGE (0.2 AF) WILDLIFE FROM STORAGE (0.2 AF) DIVERSION TO STORAGE (0.01 CFS)

In: NWNW Sec 20 T 15N R 19E

72-7331

U.S. DEPT. OF INTERIOR
BUREAU OF LAND MG-MT., IDAHO STATE OFFICE,
3380 AMERICANA TERRACE, BOISE, ID 83706

Source: SPRING trib. to ELLIS CREEK
Date Filed: 08/10/1983
Diversion Pt: SWNW Sec 32 T 16N R 20E

Use: STOCKWATER FROM STORAGE (0.5 AF) STOCKWATER FROM STORAGE (0.5 AF) WILDLIFE FROM STORAGE (0.5 AF) DIVERSION TO STORAGE (0.02 CFS)

In: SWNW Sec 32 T 16N R 20E

72-7330

U.S. DEPT. OF INTERIOR
BUREAU OF LAND MG-MT., IDAHO STATE OFFICE,
3380 AMERICANA TERRACE, BOISE, ID 83706

Source: SPRING trib. to ELLIS CREEK
Date Filed: 08/10/1983
Diversion Pt: NWSW Sec 12 T 16N R 19E

Use: STOCKWATER FROM STORAGE (0.5 AF) STOCKWATER FROM STORAGE (0.5 AF) WILDLIFE FROM STORAGE (0.5 AF) DIVERSION TO STORAGE (0.02 CFS)

In: NWSW Sec 12 T 16N R 19E

72-7329

U.S. DEPT. OF INTERIOR
BUREAU OF LAND MG-MT., IDAHO STATE OFFICE,
3380 AMERICANA TERRACE, BOISE, ID 83706

Source: SPRING trib. to CORRAL BASIN CREEK
Date Filed: 07/25/1983
Diversion Pt: NWNW Sec 08 T 10N R 20E

Use: STOCKWATER FROM STORAGE (0.5 AF) WILDLIFE FROM STORAGE (0.5 AF) DIVERSION TO STORAGE (0.02 CFS)

In: NWNW Sec 08 T 10N R 20E

72-7328

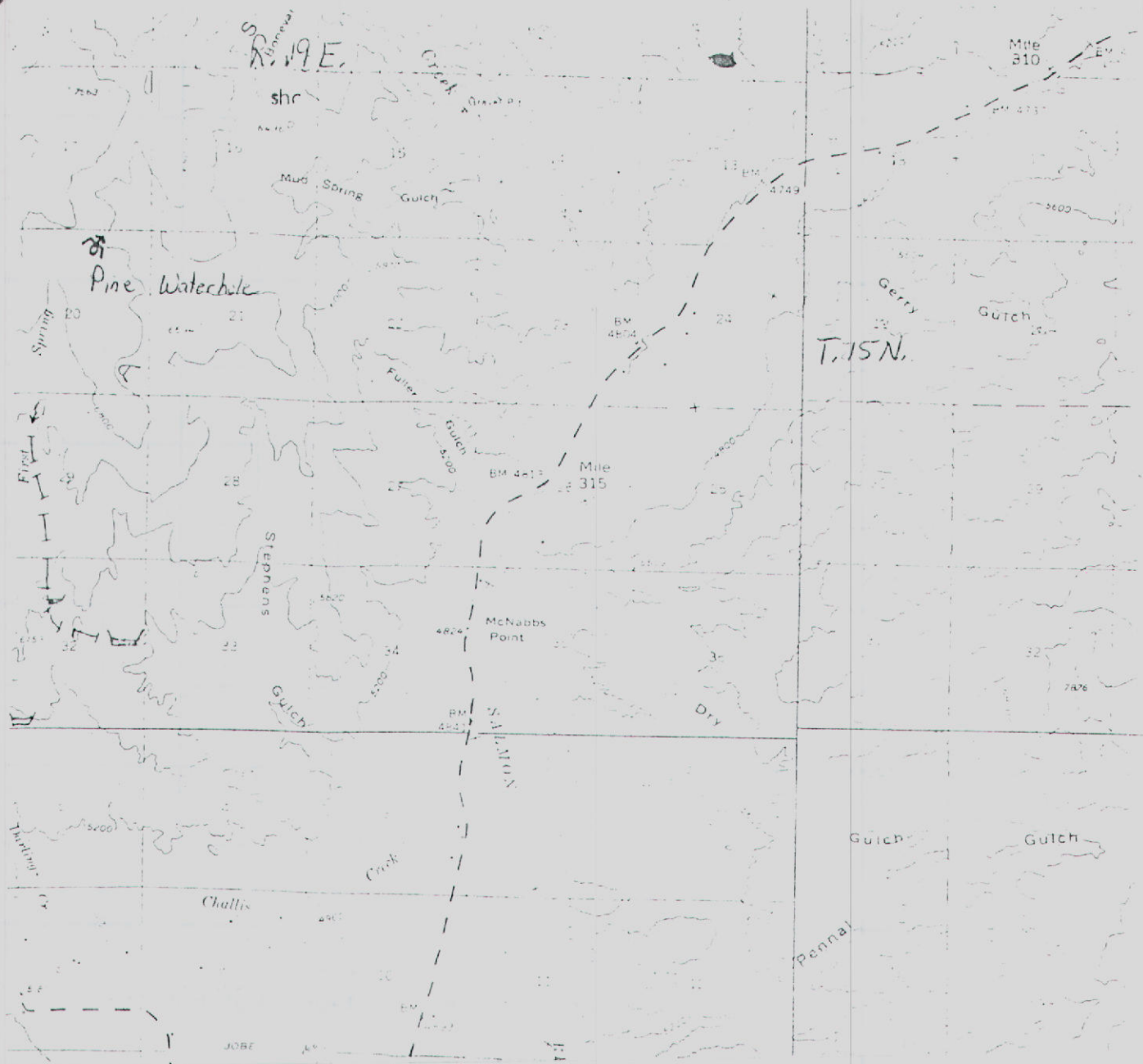
U.S. DEPT. OF INTERIOR
BUREAU OF LAND MG-MT., IDAHO STATE OFFICE,
3380 AMERICANA TERRACE, BOISE, ID 83706

Source: SPRING trib. to CORRAL BASIN CREEK
Date Filed: 07/25/1983
Diversion Pt: NWNW Sec 08 T 10N R 20E

Use: STOCKWATER FROM STORAGE (0.5 AF) WILDLIFE FROM STORAGE (0.5 AF) DIVERSION TO STORAGE (0.02 CFS)

In: NWNW Sec 08 T 10N R 20E

RECEIVED



Point(s) of diversion: NW 1/4 NE 1/4 Sec. 20 T. 15N. R. 19E.

Place(s) of Use

TWP.	RGE.	SEC.	NE 1/4				NW 1/4				SW 1/4				SE 1/4				TOTALS
			NE 1/4	NW 1/4	SW 1/4	SE 1/4	NE 1/4	NW 1/4	SW 1/4	SE 1/4	NE 1/4	NW 1/4	SW 1/4	SE 1/4	NE 1/4	NW 1/4	SW 1/4	SE 1/4	
15N.	19E.	20		W.S.															

Recommended Amendments:

- ☐ Change P.D. as reflected above
☐ Change P.U. as reflected above

- ☐ Add P.D. as reflected above
☐ Add P.U. as reflected above

- ☒ None
☐ Other

MICROFILMED

MAR 09 1987

Examiner's Signature

Checked by

Approved by

Termy A. Blau
J.P. Stanton

ADN

Jim

Date 4-8-86

Date 4-21-86

Date 11-20-86

State of Idaho
Department of Water Resources

WATER RIGHT LICENSE

WATER RIGHT NO. 72-7332

Priority: August 10, 1983 Amount: .01 CFS 2.7 AF

This is to certify, that U.S. DEPT. OF INTERIOR
BUREAU OF LAND MGMT.
IDAHO STATE OFFICE
3380 AMERICANA TERRACE
BOISE, ID 83706

has complied with the terms and conditions
of the permit issued pursuant to Application for Permit dated August 10, 1983, and
has submitted proof to the Department of Water Resources on May 16, 1984, that
water has been applied to a beneficial use; an examination by the Department indicates
that the works have a diversion capacity of .01 cfs of water from;

UNNAMED STREAM tributary to SALMON RIVER

and that a water right has been established as follows:

<u>BENEFICIAL USE</u>	<u>PERIOD OF USE</u>	<u>RATE OF DIVERSION</u>	<u>VOLUME</u>
Stockwater	01/01 to 12/31	.01 cfs	2.5 af
Stockwater storage	01/01 to 12/31		.2 af
Wildlife storage	01/01 to 12/31		.2 af
	Totals	.01 CFS	2.7 AF

LOCATION OF POINT OF DIVERSION(S): NWNW , Sec. 20, Township 15N, Range 19E
Custer County

PLACE OF USE: Stockwater

TWN RGE SEC

15N 19E 20 NWNW

PLACE OF USE: Stockwater storage, same as Stockwater use

PLACE OF USE: Wildlife storage, same as Stockwater use

CONDITIONS/REMARKS:

1. The right to the use of the water hereby confirmed is limited to the amount which can actually be beneficially used and is restricted and appurtenant to the lands or place of use and to the purpose herein described, as provided by the laws of Idaho.
2. This right is subject to all prior water rights and may be forfeited by five years of non-use.
3. Modifications to or variance from this license must be made within the limits of Section 42-222, Idaho Code, or the applicable Idaho law.
4. This right, when considered with all other rights common to the same grazing allotment, shall be limited to the quantity of water beneficially used by the number of stock within the allotment.
5. Project also known as Pine Waterhole.

MICROFILMED

MAR 09 1987

State of Idaho
Department of Water Resources

PAGE 2


WATER RIGHT LICENSE

WATER RIGHT NO. 72-7332

This license is issued pursuant to the provisions of Section 42-219, Idaho Code.
Witness the seal and signature of the Director, affixed at Boise, this 23rd day
of FEBRUARY, 1987.

Acting for the

Director



STATE OF IDAHO
DEPARTMENT OF WATER RESOURCES
APPLICATION FOR PERMIT

RECEIVED
10-85

AUG 10 1983

APPROVED

To appropriate the public waters of the State of Idaho Department of Water Resources

1. Name of applicant USDI, Bureau of Land Management Phone (208) 756-2201

Post office address Box 430; Salmon, Idaho 83467

2. Source of water supply (Snowmelt) Unnamed Stream which is a tributary of Salmon River

3. Location of point of diversion is NW $\frac{1}{4}$ of NE $\frac{1}{4}$ of Section 20 Township 15N.

Range 19E. B.M. Custer County, additional points of diversion if any: _____

4. Water will be used for the following purposes:

Amount <u>.2</u> a/f for <u>livestock</u> purposes from <u>storage</u> <u>05/01</u> to <u>05/31</u> (both dates inclusive)
(acre or acre-feet per annum)
Amount <u>.2</u> a/f for <u>wildlife</u> purposes from <u>storage</u> <u>01/01</u> to <u>12/31</u> (both dates inclusive)
(acre or acre-feet per annum)
Amount <u>.01</u> cfs for <u>diversion to storage</u> purposes from <u>01/01</u> to <u>12/31</u> (both dates inclusive)
(cfs or acre-feet per annum)
Amount _____ for _____ purposes from _____ to _____ (both dates inclusive)
(cfs or acre-feet per annum)

5. Total quantity to be appropriated:

a. .01 cubic feet per second and/or b. .4 acre-feet per annum.

6. Proposed diverting works:

a. Description of ditches, flumes, pumps, headgates, etc. Catchment basin dug out to catch snowmelt.

b. Height of storage dam _____ feet, active reservoir capacity _____ acre-feet; total reservoir capacity _____ acre-feet, materials used in storage dam: _____

Period of year when water will be diverted to storage _____ to _____ inclusive.
(Month/Day) (Month/Day)

c. Proposed well diameter is _____ inches; proposed depth of well is _____ feet.

7. Time required for the completion of the works and application of the water to the proposed beneficial use is 5 years (minimum 1 year - maximum 5 years).

8. Description of proposed uses:

a. If water is not for irrigation:

(1) Give the place of use of water: NW $\frac{1}{4}$ of NE $\frac{1}{4}$ of Section 20 Township 15N.

Range 19E. B.M.

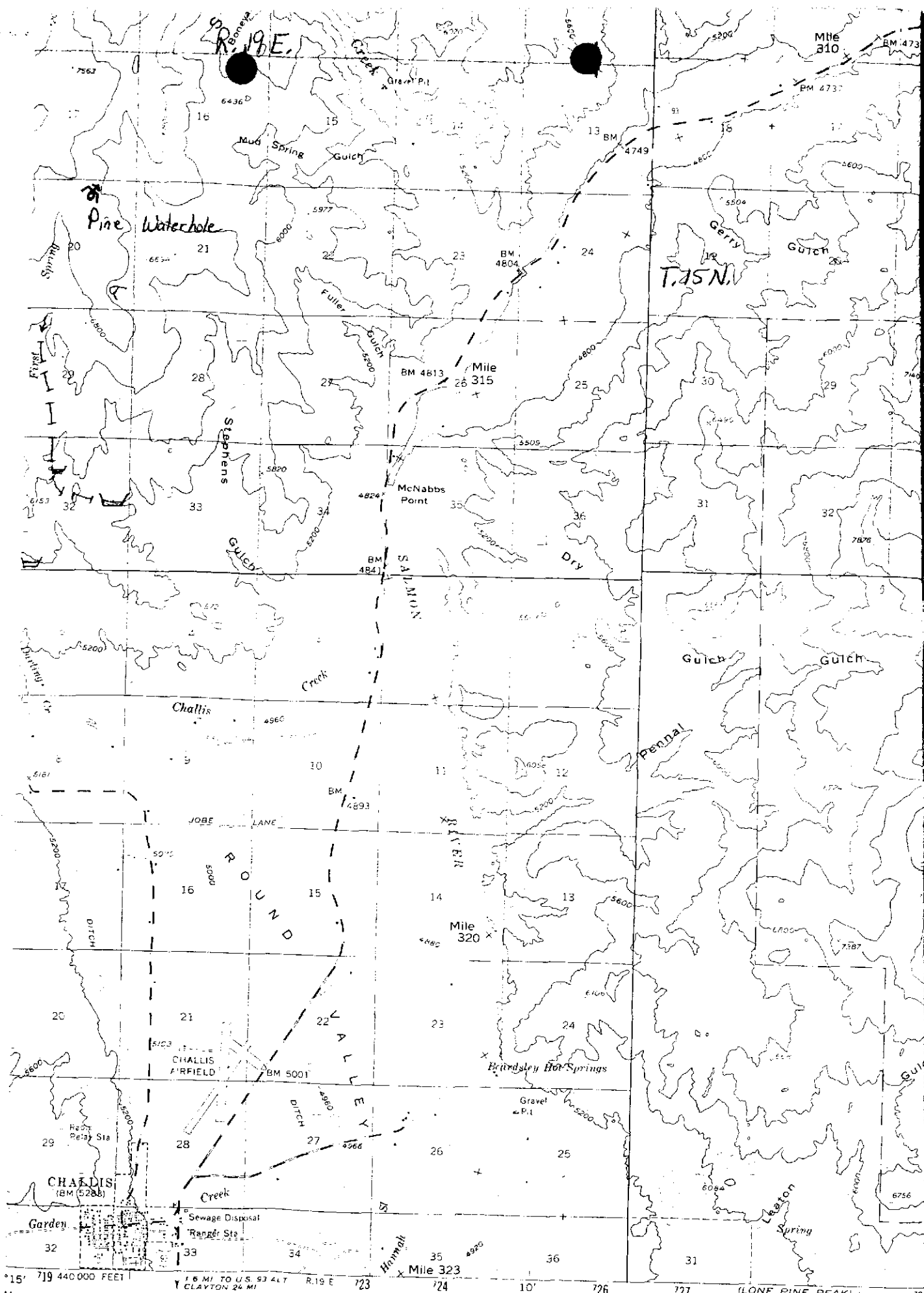
(2) Amount of power to be generated: _____ horsepower under _____ feet of head.

(3) List number of each kind of livestock to be watered 1400 cattle, 51 horses

(4) Name of municipality to be served _____, or number of families to be supplied with domestic water _____.

(5) If water is to be used for other purposes describe: Wildlife - elk, deer, bear, antelope

MICROFILMED



15' 719 440 000 FEET

1.6 MI TO U.S. 93 ALT. R. 19 E. 723

CLAYTON 24 MI

Mapped, edited, and published by the Geological Survey

Control by USGS and USC&GS

Topography from aerial photographs by photogrammetric methods

Aerial photographs taken 1954 Advance field check 1956

Polyconic projection. 1927 North American datum

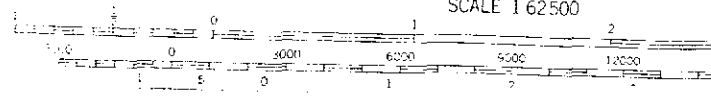
(LONE PINE PEAK) 3172'

SCALE 1:62500

★

IGN

MM



WAC



11. Map of proposed project: show clearly the proposed point of diversion, place of use, section number, township and range number. See attached map.

See attached map.

[illegible]

WILMED

Scale: 2 inches equal 1 mile.

BE IT KNOWN that the undersigned hereby makes application for permit to appropriate the public waters of the State of Idaho as herein set forth.

Kenneth G. Walker

(Applicant) DISTRICT MANAGER

Proposed Priority 8/10/83

Received by CW Date 8-10-83 Time 11:05
Preliminary check by Q Fee \$ 30⁰⁰ ID-910-BP3-0003
Receipted by tg Date 12-27-83 # 33664
Publication prepared by maga Date 10/31/83
Published in Custer Publishing Co.
Publication dates 11/10 + 11/17/83
Publication approved maga Date 11/21/83
Protests filed by: None

Copies of protests forwarded by _____
Hearing held by _____ Date _____
Recommended for approval denial by Adm kw

ACTION OF THE DIRECTOR, DEPARTMENT OF WATER RESOURCES

This is to certify that I have examined Application for Permit to appropriate the public waters of the State of Idaho No. 72-7332, and said application is hereby APPROVED.

1. Approval of said application is subject to the following limitations and conditions:

- a. SUBJECT TO ALL PRIOR WATER RIGHTS.
- b. Proof of construction of works and application of water to beneficial use shall be submitted on or before January 1, 19 89.
- c. The rate of diversion, if water is to be used for irrigation under this permit, when combined with all other water rights for the same land shall not exceed 0.02 cubic feet per second for each acre of land.
- d. Other: Permit holder shall commence the excavation or construction of diverting works within one year of the date this permit is issued and shall proceed diligently until the project is complete.

Witness my hand this 4th day of January, 1984.

J. Glen Saxton
Chief, Operations Bureau

AFFIDAVIT OF PUBLICATION

State of Idaho, County of Custer, ss:

I, MARGARET PARKS,
 Publisher of the Challis Messenger, a
 weekly newspaper, published at Challis,
 Idaho, do solemnly swear that the notice
 hereto attached and made a part hereof,
 was published in the regular and entire
 issue of the Challis Messenger for 2
 consecutive weeks, commencing with
 the issue dated Nov. 10

1983 and ending with the issue
 dated Nov. 17, 1983

Margaret Parks
 Subscribed and sworn to before
 this 18 day of November,
 1983

Evel M. Parks
 Notary Public, residing at Challis,
 Idaho. My commission expires on
Life

RECEIVED

NOV 21 1983

Department of Water Resources
 Southern District Office

RECEIVED

NOTICE OF APPLICATION FOR WATER RIGHT

Notice is hereby given that
 the following application(s)
 have been submitted for
 permit to appropriate the
 public waters of the State of
 Idaho:

72-7349

U.S. DEPT. OF INTERIOR
 BUREAU OF LAND MG-
 MT., IDAHO STATE OFFICE,
 3380 AMERICANA TER-
 RACE, BOISE, ID 83706

Source: SPRING trib. to
 CORRAL BASIN CREEK
 Date Filed: 07/21/1983
 Diversion Pt: NENE Sec 03
 T 10N R 20E

Use: STOCKWATER FROM
 STORAGE (0.5 AF) WILD-
 LIFE FROM STORAGE (0.5
 AF) DIVERSION TO STOR-
 AGE (0.02 CFS)

In: NENE Sec 03 T 10N R 20E

72-7348

U.S. DEPT. OF INTERIOR
 BUREAU OF LAND MG-
 MT., IDAHO STATE OFFICE,
 3380 AMERICANA TER-
 RACE, BOISE, ID 83706

Source: SPRING trib. to
 BROKEN WAGON CREEK
 Date Filed: 07/21/1983
 Diversion Pt: SWSE Sec 02 T
 10N R 20E

Use: STOCKWATER FROM
 STORAGE (0.5 AF) WILD-
 LIFE FROM STORAGE (0.5
 AF) DIVERSION TO STOR-
 AGE (0.02 CFS)

In: SWSE Sec 02 T 10N R 20E

72-7347

U.S. DEPT. OF INTERIOR
 BUREAU OF LAND MG-
 MT., IDAHO STATE OFFICE,
 3380 AMERICANA TER-
 RACE, BOISE, ID 83706

Source: SPRING trib. to
 HORSE BASIN CREEK
 Date Filed: 07/21/1983
 Diversion Pt: SWSE Sec 15 T
 10N R 20E

Use: STOCKWATER FROM
 STORAGE (0.5 AF) WILD-
 LIFE FROM STORAGE (0.5
 AF) DIVERSION TO STOR-
 AGE (0.02 CFS)

In: SWSE Sec 15 T 10N R 20E

72-7346

U.S. DEPT. OF INTERIOR
 BUREAU OF LAND MG-
 MT., IDAHO STATE OFFICE,
 3380 AMERICANA TER-
 RACE, BOISE, ID 83706

Source: SPRING trib. to
 CORRAL BASIN CREEK
 Date Filed: 07/21/1983
 Diversion Pt: SWNE Sec 03
 T 10N R 20E

Use: STOCKWATER FROM
 STORAGE (0.5 AF) WILD-
 LIFE FROM STORAGE (0.5
 AF) DIVERSION TO STOR-
 AGE (0.02 CFS)

In: SWNE Sec 03 T 10N R 20E

72-7345

U.S. DEPT. OF INTERIOR
 BUREAU OF LAND MG-
 MT., IDAHO STATE OFFICE,
 3380 AMERICANA TER-
 RACE, BOISE, ID 83706

Source: SPRING trib. to
 CORRAL BASIN CREEK
 Date Filed: 07/21/1983
 Diversion Pt: LOT 04
 (NWNW) Sec 03 T 10N R 20E

Use: STOCKWATER FROM
 STORAGE (0.5 AF) WILD-
 LIFE FROM STORAGE (0.5
 AF) DIVERSION TO STOR-
 AGE (0.02 CFS)

In: LOT 04 (NWNW) Sec 03 T
 10N R 20E

74-7344

U.S. DEPT. OF INTERIOR
 BUREAU OF LAND MG-
 MT., IDAHO STATE OFFICE,
 3380 AMERICANA TER-
 RACE, BOISE, ID 83706

Source: SPRING trib. to
 MOSQUITO CREEK
 Date Filed: 07/25/1983
 Diversion Pt: SWSW Sec 03 T
 09N R 18E

Use: STOCKWATER FROM
 STORAGE (0.5 AF) WILD-
 LIFE FROM STORAGE (0.5
 AF) DIVERSION TO STOR-
 AGE (0.02 CFS)

In: SWSW Sec 03 T 09N R 18E

72-7342

U.S. DEPT. OF INTERIOR
 BUREAU OF LAND MG-
 MT., IDAHO STATE OFFICE,
 3380 AMERICANA TER-
 RACE, BOISE, ID 83706

Source: SPRING trib. to
 HORSE BASIN CREEK
 Date Filed: 07/21/1983
 Diversion Pt: NESE Sec 10 T
 10N R 20E

Use: STOCKWATER FROM
 STORAGE (0.5 AF) WILD-
 LIFE FROM STORAGE (0.5
 AF) DIVERSION TO STOR-
 AGE (0.02 CFS)

In: NESE Sec 10 T 10N R 20E

72-7341

U.S. DEPT. OF INTERIOR
 BUREAU OF LAND MG-
 MT., IDAHO STATE OFFICE,
 3380 AMERICANA TER-
 RACE, BOISE, ID 83706

Source: GROUNDWATER
 Date Filed: 07/25/1983
 Diversion Pt: NESW Sec 22
 T 11N R 18E

Use: DOMESTIC (0.02 CFS)
 In: NESW Sec 22 T 11N R 18E

72-7340

U.S. DEPT. OF INTERIOR
 BUREAU OF LAND MG-
 MT., IDAHO STATE OFFICE,
 3380 AMERICANA TER-
 RACE, BOISE, ID 83706

Source: GROUNDWATER
 Date Filed: 07/25/1983
 Diversion Pt: NWNW Sec 30
 T 12N R 19E

Use: DOMESTIC (0.01 CFS)
 In: NWNW Sec 30 T 12N R
 19E

72-7339

U.S. DEPT. OF INTERIOR
 BUREAU OF LAND MG-
 MT., IDAHO STATE OFFICE,
 3380 AMERICANA TER-
 RACE, BOISE, ID 83706

Source: SPRING trib. to
 CORRAL BASIN CREEK
 Date Filed: 08/15/1983
 Diversion Pt: SENE Sec 09 T
 10N R 20E

Use: STOCKWATER FROM
 STORAGE (0.5 AF) WILD-
 LIFE FROM STORAGE (0.5
 AF) DIVERSION TO STOR-
 AGE (0.02 CFS)

In: SENE Sec 09 T 10N R 20E

72-7338

U.S. DEPT. OF INTERIOR
 BUREAU OF LAND MG-
 MT., IDAHO STATE OFFICE,
 3380 AMERICANA TER-
 RACE, BOISE, ID 83706

Source: SPRING trib. to
 CORRAL BASIN CREEK
 Date Filed: 08/15/1983
 Diversion Pt: SWNW Sec 10
 T 10N R 20E

Use: STOCKWATER FROM
 STORAGE (0.5 AF) WILD-
 LIFE FROM STORAGE (0.5
 AF) DIVERSION TO STOR-
 AGE (0.02 CFS)

In: SWNW Sec 10 T 10N R
 20E

72-7337

U.S. DEPT. OF INTERIOR
 BUREAU OF LAND MG-
 MT., IDAHO STATE OFFICE,
 3380 AMERICANA TER-
 RACE, BOISE, ID 83706

Source: SPRING trib. to
 CORRAL BASIN CREEK
 Date Filed: 08/15/1983
 Diversion Pt: SESE Sec 33 T
 11N R 20E

Use: STOCKWATER FROM
 STORAGE (0.5 AF) WILD-
 LIFE FROM STORAGE (0.5
 AF) DIVERSION TO STOR-
 AGE (0.02 CFS)

In: SESE Sec 33 T 11N R 20E

72-7336

U.S. DEPT. OF INTERIOR
 BUREAU OF LAND MG-
 MT., IDAHO STATE OFFICE,
 3380 AMERICANA TER-
 RACE, BOISE, ID 83706

Source: SPRING trib. to
 CORRAL BASIN CREEK
 Date Filed: 08/15/1983
 Diversion Pt: SENW Sec 04
 T 10N R 20E

Use: STOCKWATER FROM
 STORAGE (0.5 AF) WILD-
 LIFE FROM STORAGE (0.5
 AF) DIVERSION TO STOR-
 AGE (0.02 CFS)

U.S. DEPT. OF INTERIOR
 BUREAU OF LAND MG-
 MT., IDAHO STATE OFFICE,
 3380 AMERICANA TER-
 RACE, BOISE, ID 83706

Source: SPRING trib. to
 WARM SPRINGS CREEK
 Date Filed: 08/08/1983
 Diversion Pt: SWSE Sec 07 T
 13N R 20E

Use: STOCKWATER (0.01
 CFS) WILDLIFE (0.01 CFS)
 In: SWSE Sec 07 T 13N R 20E

72-7333

U.S. DEPT. OF INTERIOR
 BUREAU OF LAND MG-
 MT., IDAHO STATE OFFICE,
 3380 AMERICANA TER-
 RACE, BOISE, ID 83706

Source: SPRING trib. to
 ELLIS CREEK
 Date Filed: 08/10/1983
 Diversion Pt: SESE Sec 17 T
 16N R 20E

Use: STOCKWATER FROM
 STORAGE (0.5 AF) STOCK-
 WATER FROM STORAGE
 (0.5 AF) WILDLIFE FROM
 STORAGE (0.5 AF) DIVER-
 SION TO STORAGE (0.02
 CFS)

In: SESE Sec 17 T 16N R 20E

72-7332

U.S. DEPT. OF INTERIOR
 BUREAU OF LAND MG-
 MT., IDAHO STATE OFFICE,
 3380 AMERICANA TER-
 RACE, BOISE, ID 83706

Source: UNNAMED STRE-
 AM trib. to SALMON RIVER
 Date Filed: 08/10/1983
 Diversion Pt: NWNW Sec 20
 T 15N R 19E

Use: STOCKWATER FROM
 STORAGE (0.2 AF) STOCK-
 WATER FROM STORAGE
 (0.2 AF) WILDLIFE FROM
 STORAGE (0.2 AF) DIVER-
 SION TO STORAGE (0.01
 CFS)

In: NWNW Sec 20 T 15N R
 19E

72-7331

U.S. DEPT. OF INTERIOR
 BUREAU OF LAND MG-
 MT., IDAHO STATE OFFICE,
 3380 AMERICANA TER-
 RACE, BOISE, ID 83706

Source: SPRING trib. to
 ELLIS CREEK
 Date Filed: 08/10/1983
 Diversion Pt: SWNW Sec 32
 T 16N R 20E

Use: STOCKWATER FROM
 STORAGE (0.5 AF) STOCK-
 WATER FROM STORAGE
 (0.5 AF) WILDLIFE FROM
 STORAGE (0.5 AF) DIVER-
 SION TO STORAGE (0.02
 CFS)

In: SWNW Sec 32 T 16N R
 20E

72-7330

U.S. DEPT. OF INTERIOR
 BUREAU OF LAND MG-
 MT., IDAHO STATE OFFICE,
 3380 AMERICANA TER-
 RACE, BOISE, ID 83706

Source: SPRING trib. to
 ELLIS CREEK
 Date Filed: 08/10/1983
 Diversion Pt: NWSW Sec 12
 T 16N R 19E

Use: STOCKWATER FROM
 STORAGE (0.5 AF) STOCK-
 WATER FROM STORAGE
 (0.5 AF) WILDLIFE FROM
 STORAGE (0.5 AF) DIVER-
 SION TO STORAGE (0.02
 CFS)

In: NWSW Sec 12 T 16N R
 19E

72-7329

U.S. DEPT. OF INTERIOR
 BUREAU OF LAND MG-
 MT., IDAHO STATE OFFICE,
 3380 AMERICANA TER-
 RACE, BOISE, ID 83706

Source: SPRING trib. to
 CORRAL BASIN CREEK
 Date Filed: 07/25/1983
 Diversion Pt: NWNW Sec 08
 T 10N R 20E

Use: STOCKWATER FROM
 STORAGE (0.5 AF) WILD-
 LIFE FROM STORAGE (0.5
 AF) DIVERSION TO STOR-
 AGE (0.02 CFS)

In: NWNW Sec 08 T 10N R
 20E

72-7328

U.S. DEPT. OF INTERIOR
 BUREAU OF LAND MG-
 MT., IDAHO STATE OFFICE,
 3380 AMERICANA TER-
 RACE, BOISE, ID 83706

Source: SPRING trib. to
 CORRAL BASIN CREEK
 Date Filed: 07/25/1983
 Diversion Pt: NWNW Sec 08
 T 10N R 20E

Use: STOCKWATER FROM
 STORAGE (0.5 AF) WILD-
 LIFE FROM STORAGE (0.5
 AF) DIVERSION TO STOR-
 AGE (0.02 CFS)

In: NWNW Sec 08 T 10N R
 20E

72-7323

U.S. DEPT. OF INTERIOR
BUREAU OF LAND MG-
MT., IDAHO STATE OFFICE,
3380 AMERICANA TER-
RACE, BOISE, ID 83706
Source: SPRING trib. to
BROKEN WAGON CREEK
Date Filed: 07/21/1983
Diversion Pt: SESE Sec 34 T
11N R 20E

Use: STOCKWATER FROM
STORAGE (0.5 AF) WILD-
LIFE FROM STORAGE (0.5
AF) DIVERSION TO STOR-
AGE (0.02 CFS)
In: NESE Sec 34 T 11N R 20E

72-7343

U.S. DEPT. OF INTERIOR
BUREAU OF LAND MG-
MT., IDAHO STATE OFFICE,
3380 AMERICANA TER-
RACE, BOISE, ID 83706
Source: SPRING trib. to
CORRAL BASIN CREEK
Date Filed: 07/25/1983
Diversion Pt: SENW Sec 08
T 10N R 20E

Use: STOCKWATER FROM
STORAGE (0.5 AF) WILD-
LIFE FROM STORAGE (0.5
AF) DIVERSION TO STOR-

AGE (0.02 CFS)
In: SENW Sec 08 T 10N R 20E

72-7320

U.S. DEPT. OF INTERIOR
BUREAU OF LAND MG-
MT., IDAHO STATE OFFICE,
3380 AMERICANA TER-
RACE, BOISE, ID 83706
Source: SPRING trib. to
LAKE CREEK
Date Filed: 07/21/1983
Diversion Pt: SESE Sec 08 T
09N R 19E

Use: STOCKWATER (0.01
CFS) WILDLIFE (0.01 CFS)
In: SESE Sec 08 T 09N R 19E

72-7319

U.S. DEPT. OF INTERIOR
BUREAU OF LAND MG-
MT., IDAHO STATE OFFICE,
3380 AMERICANA TER-
RACE, BOISE, ID 83706
Source: SPRING trib. to
DRY HOLLOW
Date Filed: 07/21/1983
Diversion Pt: NWNW Sec 32
T 10N R 19E

Use: STOCKWATER (0.01
CFS) WILDLIFE (0.01 CFS)
In: NWNW Sec 32 T 10N R
19E

72-7312

U.S. DEPT. OF INTERIOR
BUREAU OF LAND MG-
MT., IDAHO STATE OFFICE,
3380 AMERICANA TER-
RACE, BOISE, ID 83706
Source: SPRING trib. to
BROKEN WAGON CREEK
Date Filed: 08/15/1983
Diversion Pt: NENE Sec 03
T 10N R 20E

Use: STOCKWATER FROM
STORAGE (0.5 AF) WILD-
LIFE FROM STORAGE (0.5
AF) DIVERSION TO STOR-
AGE (0.02 CFS)
In: NENE Sec 03 T 10N R 20E

72-7311

U.S. DEPT. OF INTERIOR
BUREAU OF LAND MG-
MT., IDAHO STATE OFFICE,
3380 AMERICANA TER-
RACE, BOISE, ID 83706
Source: SPRING trib. to
SINKS

Date Filed: 07/25/1983
Diversion Pt: NWSE Sec 27
T 11N R 20E

Use: STOCKWATER (0.01
CFS) WILDLIFE (0.01 CFS)
In: NESE Sec 27 T 11N R 20E

72-7327

U.S. DEPT. OF INTERIOR
BUREAU OF LAND MG-
MT., IDAHO STATE OFFICE,
3380 AMERICANA TER-
RACE, BOISE, ID 83706

Source: GROUNDWATER
Date Filed: 07/25/1983
Diversion Pt: NENE Sec 19
T 12N R 19E
Use: DOMESTIC (0.01 CFS)
In: NWNE Sec 19 T 12N R 19E

72-7326

U.S. DEPT. OF INTERIOR
BUREAU OF LAND MG-
MT., IDAHO STATE OFFICE,
3380 AMERICANA TER-
RACE, BOISE, ID 83706

Source: SPRING trib. to
SPAR CANYON CREEK
Date Filed: 07/25/1983
Diversion Pt: NESW Sec 20
T 11N R 19E

Use: STOCKWATER (0.01
CFS) WILDLIFE (0.01 CFS)
In: NESW Sec 20 T 11N R 19E

72-7325

U.S. DEPT. OF INTERIOR
BUREAU OF LAND MG-
MT., IDAHO STATE OFFICE,
3380 AMERICANA TER-
RACE, BOISE, ID 83706

Source: SPRING trib. to
DRY HOLLOW
Date Filed: 07/25/1983
Diversion Pt: NWNW Sec 31
T 10N R 19E

Use: STOCKWATER (0.01
CFS) WILDLIFE (0.01 CFS)
In: NWNW Sec 31 T 10N R
19E

72-7324

U.S. DEPT. OF INTERIOR
BUREAU OF LAND MG-
MT., IDAHO STATE OFFICE,
3380 AMERICANA TER-
RACE, BOISE, ID 83706

Source: SPRING trib. to
MALM GULCH
Date Filed: 07/25/1983
Diversion Pt: SESW Sec 25 T
12N R 19E

Use: STOCKWATER (0.01
CFS) WILDLIFE (0.01 CFS)
In: SESE Sec 25 T 12N R
19E

72-7323

U.S. DEPT. OF INTERIOR
BUREAU OF LAND MG-
MT., IDAHO STATE OFFICE,
3380 AMERICANA TER-
RACE, BOISE, ID 83706

Source: SPRING trib. to
SALMON RIVER, EAST
FORK
Date Filed: 07/25/1983
Diversion Pt: NWNW Sec 30
T 11N R 19E

Use: STOCKWATER (0.01
CFS) WILDLIFE (0.01 CFS)
In: NWNE Sec 25 T 11N R
18E NWNW Sec 30 T 11N R 19E

72-7322

U.S. DEPT. OF INTERIOR
BUREAU OF LAND MG-
MT., IDAHO STATE OFFICE,
3380 AMERICANA TER-
RACE, BOISE, ID 83706

Source: SPRING trib. to MC
GOWAN CREEK
Date Filed: 07/25/1983
Diversion Pt: SWNW Sec 29
T 12N R 21E

Use: STOCKWATER (0.01
CFS) WILDLIFE (0.01 CFS)
In: SWNE Sec 24 T 12N R 20E
LOT 01 Sec 30 T 12N R 21E
SWNW Sec 29 T 12N R 21E

72-7321

U.S. DEPT. OF INTERIOR
BUREAU OF LAND MG-
MT., IDAHO STATE OFFICE,
3380 AMERICANA TER-
RACE, BOISE, ID 83706

Source: SPRING trib. to
LONE PINE CREEK
Date Filed: 07/25/1983
Diversion Pt: SENE Sec 15 T
12N R 19E

Use: STOCKWATER (0.02
CFS) WILDLIFE (0.01 CFS)
In: NESW Sec 01 T 12N R 19E
NWSE Sec 02 T 12N R 19E

72-7318

U.S. DEPT. OF INTERIOR
BUREAU OF LAND MG-
MT., IDAHO STATE OFFICE,
3380 AMERICANA TER-
RACE, BOISE, ID 83706

Source: SPRING trib. to
BROKEN WAGON CREEK
Date Filed: 07/21/1983
Diversion Pt: NWNE Sec 35
T 11N R 20E

Use: STOCKWATER (0.04
CFS) WILDLIFE (0.01 CFS)
In: SENE Sec 06 T 10N R 21E
NWSE Sec 08 T 10N R 21E
NWNE Sec 35 T 11N R 20E
SWNE Sec 36 T 11N R 20E
SENE Sec 31 T 11N R 21E

72-7317

U.S. DEPT. OF INTERIOR
BUREAU OF LAND MG-
MT., IDAHO STATE OFFICE,
3380 AMERICANA TER-
RACE, BOISE, ID 83706

Source: SPRING trib. to
CORRAL BASIN CREEK
Date Filed: 08/15/1983
Diversion Pt: NESW Sec 04
T 10N R 20E

Use: STOCKWATER FROM
STORAGE (0.5 AF) WILD-
LIFE FROM STORAGE (0.5
AF) DIVERSION TO STOR-
AGE (0.02 CFS)
In: NWSW Sec 04 T 10N R
20E

72-7316

U.S. DEPT. OF INTERIOR
BUREAU OF LAND MG-
MT., IDAHO STATE OFFICE,
3380 AMERICANA TER-
RACE, BOISE, ID 83706

Source: SPRING trib. to
CORRAL BASIN CREEK
Date Filed: 08/15/1983
Diversion Pt: SWNW Sec 33
T 11N R 20E

Use: STOCKWATER FROM
STORAGE (0.5 AF) WILD-
LIFE FROM STORAGE (0.5
AF) DIVERSION TO STOR-
AGE (0.02 CFS)
In: SWNW Sec 33 T 11N R
20E

72-7315

U.S. DEPT. OF INTERIOR
BUREAU OF LAND MG-
MT., IDAHO STATE OFFICE,
3380 AMERICANA TER-
RACE, BOISE, ID 83706

Source: SPRING trib. to
HORSE BASIN CREEK
Date Filed: 08/15/1983
Diversion Pt: NENE Sec 27
T 10N R 20E

Use: STOCKWATER FROM
STORAGE (0.5 AF) WILD-
LIFE FROM STORAGE (0.5
AF) DIVERSION TO STOR-
AGE (0.02 CFS)
In: NWNE Sec 27 T 10N R
20E

72-7314

U.S. DEPT. OF INTERIOR
BUREAU OF LAND MG-
MT., IDAHO STATE OFFICE,
3380 AMERICANA TER-
RACE, BOISE, ID 83706

Source: SPRING trib. to
BROKEN WAGON CREEK
Date Filed: 08/15/1983
Diversion Pt: SENW Sec 02
T 10N R 20E

Use: STOCKWATER FROM
STORAGE (0.5 AF) WILD-
LIFE FROM STORAGE (0.5
AF) DIVERSION TO STOR-
AGE (0.02 CFS)
In: SWNE Sec 02 T 10N R 20E

72-7313

U.S. DEPT. OF INTERIOR
BUREAU OF LAND MG-
MT., IDAHO STATE OFFICE,
3380 AMERICANA TER-
RACE, BOISE, ID 83706

Source: SPRING trib. to
BROKEN WAGON CREEK
Date Filed: 08/15/1983
Diversion Pt: SWNW Sec 02
T 10N R 20E

Use: STOCKWATER FROM
STORAGE (0.5 AF) WILD-
LIFE FROM STORAGE (0.5
AF) DIVERSION TO STOR-
AGE (0.02 CFS)
In: SWNW Sec 02 T 10N R
20E

72-7310

U.S. DEPT. OF INTERIOR
BUREAU OF LAND MG-
MT., IDAHO STATE OFFICE,
3380 AMERICANA TER-
RACE, BOISE, ID 83706

Source: SPRING trib. to
SALMON RIVER, EAST
FORK
Date Filed: 07/21/1983
Diversion Pt: NENE Sec 15
T 10N R 18E

Use: STOCKWATER (0.01
CFS) WILDLIFE (0.01 CFS)
In: SENE Sec 15 T 10N R 18E

72-7309

U.S. DEPT. OF INTERIOR
BUREAU OF LAND MG-
MT., IDAHO STATE OFFICE,
3380 AMERICANA TER-
RACE, BOISE, ID 83706

Source: SPRING trib. to
SALMON RIVER, EAST
FORK
Date Filed: 07/21/1983
Diversion Pt: NENE Sec 08
T 09N R 18E

Use: STOCKWATER (0.01
CFS) WILDLIFE (0.01 CFS)
In: SESE Sec 05 T 09N R 18E

72-7308

U.S. DEPT. OF INTERIOR
BUREAU OF LAND MG-
MT., IDAHO STATE OFFICE,
3380 AMERICANA TER-
RACE, BOISE, ID 83706

Source: STEVENS GULCH
trib. to SALMON RIVER
Date Filed: 08/10/1983
Diversion Pt: SESE Sec 20 T
15N R 19E

Use: STOCKWATER FROM
STORAGE (0.2 AF) STOCK-
WATER FROM STORAGE
(0.2 AF) WILDLIFE FROM
STORAGE (0.2 AF) DIVER-
SION TO STORAGE (0.01
CFS)

In: SESE Sec 20 T 15N R 19E

71-7094

MC COMB, ALAN D.
MC COMBS, JEANNE M.
BOX 298, GOODING, ID
83330
Source: HELL ROARING
CREEK trib. to SALMON
RIVER

Diversion Pt: SENW Sec 17
T 08N R 14E
Use: IRRIGATION (0.06
CFS) DOMESTIC (0.02 CFS)
In: NESW Sec 17 T 08N R 14E
FOR 2 ACRES

If issued, the permit(s) will
be subject to all prior water
rights. Protests against the
granting of any permit must be
filed with the Director of the
Idaho Department of Water
Resources, 1041 Blue Lakes
Blvd. North, Twin Falls, Idaho
83301 and received on or before
NOVEMBER 27, 1983.

A. KENNETH DUNN
Director
Published 11/10 & 11/17/1983

72-7335

U.S. DEPT. OF INTERIOR
BUREAU OF LAND MG-
MT., IDAHO STATE OFFICE,
3380 AMERICANA TER-
RACE, BOISE, ID 83706

Source: SPRING trib. to
HORSE BASIN CREEK
Date Filed: 08/15/1983
Diversion Pt: SWSW Sec 23 T
10N R 20E

Use: STOCKWATER FROM
STORAGE (0.5 AF) WILD-
LIFE FROM STORAGE (0.5
AF) DIVERSION TO STOR-
AGE (0.02 CFS)
In: SWSW Sec 23 T 10N R 20E



State of Idaho

DEPARTMENT OF WATER RESOURCES

STATE OFFICE, 450 W. State Street, Boise, Idaho

CECIL D. ANDRUS
Governor

A. KENNETH DUNN
Director

Mailing address:
Statehouse
Boise, Idaho 83720
(208) 334-4440

February 23, 1987

RE: Permit Nos. 72-7308/7316/7329/7330/7331/7332/7333/7335/7336/
7337/7338/7339/7342/7343/7344/7345/7346/7348/7349/7357

Bureau of Land Mgmt.
Idaho State Office
3380 Americana Terrace
Boise, ID 83706

Gentlemen:

Enclosed herewith are copies of the Water Right Licenses issued on the
above referenced permits.

Sincerely,

JIM JOHNSON
Water Rights Supervisor

JJ:sc

Enclosures

MAIL ROOM
MAR 09 1987



State of Idaho

DEPARTMENT OF WATER RESOURCES

STATE OFFICE, 450 W. State Street, Boise, Idaho

CECIL D. ANDRUS
Governor

A. KENNETH DUNN
Director

Mailing address:
Statehouse
Boise, Idaho 83720
(208) 334-4440

February 2, 1987

RE: Permit Nos. 72-7308/7316/7329/7330/7331/7332/7333/7335/7336/7337/
7338/7339/7342/7343/7344/7345/7346/7348/7349/7357

Bureau of Land Mgmt.
3380 Americana Terrace
Boise, ID 83706

Gentlemen:

Enclosed are draft copies of the licenses proposed to be issued on the above referenced water rights.

If you do not concur with the information shown on the draft licenses, please advise the Department within ten (10) days. If you have any questions, please let us know; otherwise, the licenses will be issued as identified on the draft copies.

Sincerely,

JIM JOHNSON
Water Rights Supervisor

JJ:sc

Enclosures

MICROFILMED

MAR 09 1987

MEMORANDUM

TO: Files
FROM: Loren Holmes
RE: BLM Permits

During the field examination conference with BLM staff, it was discovered that the permits did not accurately describe the stockwater and livestock developments.

The storage ponds constructed were actually on-stream, not off-stream as the permits indicate and the animals do use the natural channels as a water supply. Therefore, the diversion to storage component is used as natural flow diversion on the field exams.

No amendment of the permits are recommended.

MICROFILMED
MAR 10 1981

State of Idaho
DEPARTMENT OF WATER RESOURCES
FIELD REPORT

RECEIVED

JUN 30 1986

Department of Water Resources

72-7332

Permit No.

CONTACT WITH PERMIT HOLDER

	DATE	INITIALS	REMARKS
<input type="checkbox"/> Appointment letter mailed:			
<input checked="" type="checkbox"/> Telephone call made: (List Telephone No. used)			756-2201
<input checked="" type="checkbox"/> Appointment scheduled for: (Date, time, location)	11-13-85	VB	Salmon BLM office

EXAMINATION

Bill Osborne - Range Con.
Lyle Lewis - Hydrologist
Loren Anderson - Wildlife
Date 11-13-85 Accompanied by Gerry Gregson - Wildlife Total Q measured
If source is surface water, estimate total flow of source
Methods of measurement Meets Permit requirements?

Measurement calculations:

$.01 \text{ cfs} \times 1.48 \times 92 \text{ days/ANN} = 1.82 \text{ AF/ANN}$ Available from direct flow + 4 AF/ANN from storage = 2.2

WELL/DIVERSION* NO.	HP	MOTOR MAKE	MOTOR SERIAL NO.	PUMP MAKE	PUMP SERIAL NO.	MEASURING DEVICE TYPE	CONDITION OF MEAS. DEV.	REMARKS

System Description Excavated earth catchment basin

Project Name Pine Waterhole JDR # 4184

*Code with map on reverse side. Disregard code if only one.

RECOMMENDED AMOUNTS

USE	Irrigation requirement =		AFA/Acre	
	Q (cfs)	V (afa)	FROM	TO
Wildlife	.01 cfs	0.1 AFA	4/1	12/31
Stock Water	.01 cfs	1.8 AFA 2.5	5/1	12/31
Wildlife Storage		.2 AFA	1/1	12/31
Stockwater Storage		.4 AFA	1/1	12/31
		2.7		
Total	.01 cfs	2.3 AFA		

Remarks Misc. Wildlife use 30 gpd x 365 days/ANN = 10,950 gal/ANN

25 deer @ 2 gpd/hd x 166 days (5/1 - 5/1) = 8300 gal/ANN

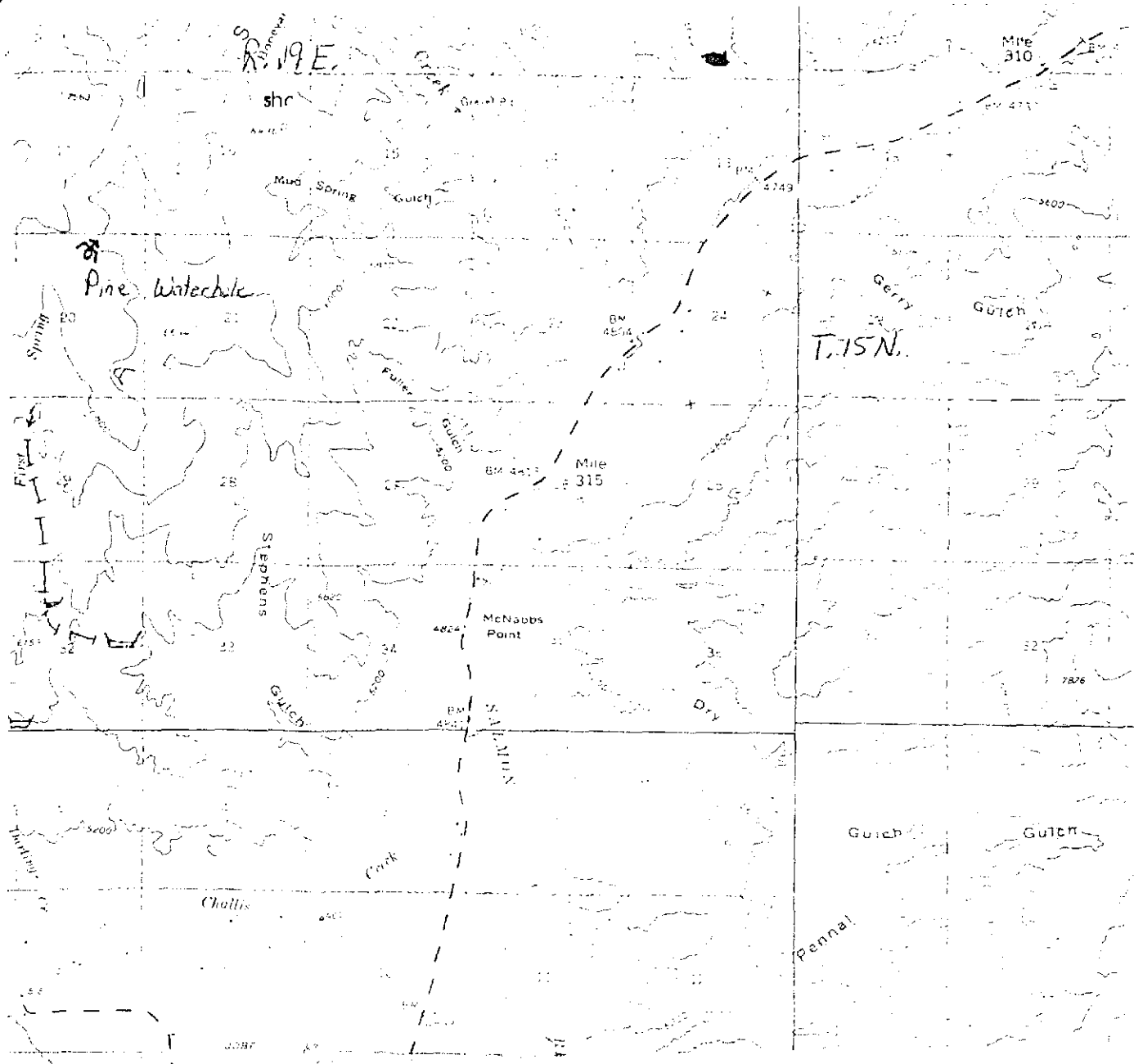
19,250 gal/ANN $\div 325,851 \text{ gal/AF} = 0.06$

1400 Cattle @ 12 gpd/hd x 46 days/ANN (5/1 - 5/31 + 1/1 - 1/5) = 772,800 gal/ANN

51 horses @ 12 gpd/hd x 92 " " (5/1 - 5/31 + 1/1 - 12/31) = 56,304 " "

829,104 " " $\div 325,851 \text{ gal/AF} = 2.5 \text{ AF/ANN}$

Dimensions unknown allow storage applied for as per plan



Point(s) of diversion: NW 1/4 NE 1/4 Sec. 20 T. 15N. R. 19E.

Place(s) of Use

TWP.	RGE.	SEC.	NE 1/4				NW 1/4				SW 1/4				SE 1/4				TOTALS
			NE 1/4	NW 1/4	SW 1/4	SE 1/4	NE 1/4	NW 1/4	SW 1/4	SE 1/4	NE 1/4	NW 1/4	SW 1/4	SE 1/4	NE 1/4	NW 1/4	SW 1/4	SE 1/4	
15N.	19E.	20		W.S.															

Recommended Amendments:

- ☐ Change P.D. as reflected above
☐ Change P.U. as reflected above

- ☐ Add P.D. as reflected above
☐ Add P.U. as reflected above

☒ None

☐ Other

MICROFILMED

MAR 09 1987

Examiner's Signature

Checked by

Approved by

Termy A. Blau
JF Denton

ADN

Jim

Date 4-8-86

Date 4-21-86

Date 11-20-86

STATE OF IDAHO
DEPARTMENT OF WATER RESOURCES
Southern Region

1041 Blue Lakes Blvd. N.
Twin Falls, Idaho 83301
(208) 734-3573

JUNE 13, 1984

BLM - SALMON DISTRICT
BOX 438
SALMON ID 83457

RE: Permit No. 72-7332

Dear Permit Holder:

We acknowledge receipt of your statement submitted as proof of beneficial use for the above referenced permit.

Before a license can be issued, a field examination must be made by a representative of this department.

A field examiner will contact you to arrange to examine your system.

If you have any questions regarding the field examination, please contact this office by phone at 734-3573 or in person at our office at 1041 Blue Lakes Blvd. N. Twin Falls, Idaho.

Sincerely,
s/Mary A. Newby
Secretary

RECEIVED
FILMED

MAR 09 1987



State of Idaho

DEPARTMENT OF WATER RESOURCES

STATE OFFICE, 450 W. State Street, Boise, Idaho

JOHN V. EVANS

Governor

A. KENNETH DUNN

Director

Mailing address:
Statehouse
Boise, Idaho 83720
(208) 334-4440

June 4, 1984

Kenneth S. Walker, District Manager
Bureau of Land Management
Box 430
Salmon, ID 83467

Dear Mr. Walker:

Re: Water Rights - See attached sheet

This office acknowledges receipt of the statement of beneficial use postcards submitted for the attached list of water rights.

Before licenses can be issued, a field examination must be made by a representative of this department. We cannot tell just when these examinations will be made, but our examiner will contact you to schedule the exams at a convenient time.

If you have any questions regarding the field examinations, please contact our Southern Regional office at 734-3578.

Sincerely,

RITA I. FLECK
Secretary/Records Manager

Attachment

cc: Southern Region



STATEMENTS OF BENEFICIAL USE POSTCARDS RECEIVED FROM THE

BUREAU OF LAND MANAGEMENT

5-16-84

Southern Region-IDWR

72-7297
72-7298
72-7299

72-7308
to
72-7339

72-7341
72-7342
72-7343

72-7345
72-7346
72-7347
72-7348
72-7349

73-7078
73-7079
73-7080
73-7081
73-7082
73-7083

74-7212
74-7213
74-7214
74-7215
74-7216
74-7217

74-7221
74-7225
74-7226

75-7393
75-7396
75-7397
75-7399

RECEIVED
APR 11 1984

DEPARTMENT OF WATER RESOURCES

The Idaho Department of Water Resources will consider this card as a statement that the permit holder(s) has completed development to the extent shown below of Permit No. 72-7332.

Name(s) of Permit Holder: USDI Bureau of Land Management

Post Office Address: P.O. Box 430

Salmon, ID 83467 Tel. No. (209) 750-2201

Source of Water: (snowmelt) unnamed stream

Extent of Use: ☐ Domestic (number of households)
☒ Stockwater 400 cattle, 51 horses (number and type of stock)
☐ Irrigation (acres)
☒ Other wildlife - elk, deer, bear, antelope

Measuring Device: Required? ☐ Yes ☒ No Installed? ☐ Yes ☒ No

Access Port: Required? ☐ Yes ☒ No Installed? ☐ Yes ☒ No

The above information is a true statement of the extent to which the above numbered permit has been developed.

DISTRICT MANAGER

5-14-84

Kenneth B. Webb
Signature of Permit Holder

PLACE
13 CENT

POSTAGE AND FEES PAID
U.S. DEPARTMENT OF THE INTERIOR
INT 415

RECEIVED

MAY 16 1984



IDAHO DEPARTMENT OF WATER RESOURCES
STATEHOUSE
BOISE, IDAHO 83720

Department of Water Resources



State of Idaho

DEPARTMENT OF WATER RESOURCES

STATE OFFICE, 450 W. State Street, Boise, Idaho

JOHN V. EVANS
Governor

A. KENNETH DUNN
Director

Mailing address:
Statehouse
Boise, Idaho 83720
(208) 334-4440

January 11, 1984

RE: Application for Permit No's. 72-7308/7312/7313/7314/7315/
7316/7317/7330/7331/7332/7333/7334/7335/7336/7337/7338/
7339, 73-7078/7079/7080/7081/7082/7083, 74-7212/7213/
7214/7215/7216/7217/7221/7224/7226, 75-7393/7396/7397/
7399/7402, 79-7143

U.S. Dept. of Interior
Bureau of Land Management
Idaho State Office
3380 Americana Terrace
Boise, ID 83706

Gentlemen:

Enclosed are copies of your approved Applications for Permit. We direct your attention to the conditions of approval on the fourth pages.

The 1982 Idaho Legislature added a requirement that as a permit holder you must commence the excavation or construction of diverting works within one year of the date the permits were issued, and you must proceed diligently until the projects are completed. The enclosed blue cards must be completed and returned to this office as soon as you commence construction, no later than one year from the date the permits were approved.

We have enclosed instructions entitled "Making Proof of Beneficial Use". Please read the instructions carefully since you must take further action to develop these permits into licenses.

Sincerely,

DAVID R. TUTHILL, JR., P.E.
Supervisor, Water Allocation Section

DRT:sc

Enclosures

RECORDED

NOTICE OF APPLICATION FOR WATER RIGHT

Notice is hereby given that the following application(s) have been submitted for permit to appropriate the public waters of the State of Idaho:

22-2332.

U.S. DEPT. OF INTERIOR

BUREAU OF LAND MGMT., IDAHO STATE OFFICE, 3380 AMERICANA TERRACE,
BOISE, ID 83706

Source: UNNAMED STREAM trib. to SALMON RIVER

Date Filed: 08/10/1983

Diversion Pt: NWNE Sec 20 T 15N R 19E

Use: STOCKWATER FROM STORAGE	(0.2 AF)
STOCKWATER FROM STORAGE	(0.2 AF)
WILDLIFE FROM STORAGE	(0.2 AF)
DIVERSION TO STORAGE	(0.01 CFS)

In: NWNE Sec 20 T 15N R 19E

If issued, the permit(s) will be subject to all prior water rights. Protests against the granting of any permit must be filed with the Director of the Idaho Department of Water Resources, 1041 Blue Lakes Blvd. North, Twin Falls, Idaho 83301 and received on or before NOVEMBER 23, 1983.

R. KENNETH DUNN

Director

Published 11/10 & 11/17/83.

MICROFILMED

STATE OF IDAHO
DEPARTMENT OF WATER RESOURCES
Southern Region

1041 Blue Lakes Blvd N.
Twin Falls, Idaho 83301
(208) 734-3578

OCTOBER 31, 1983

Custer Publishing Company
P. O. Box 405
Challis, Idaho 83226

Gentlemen:

Enclosed you will find a legal notice which we wish to have published on the dates indicated (once a week for two consecutive weekly issues) in your newspaper. We have allowed ample time for you to submit a galley proof to this office for review before the first publication date. If you cannot publish the notice on the proposed dates, please contact us immediately.

An affidavit of publication must be submitted to the Department along with the publication bill. Your cooperation is appreciated.

Please send the affidavit of publication and publication billing to this office before NOVEMBER 28, 1983.

Yours truly,

Mary A. Newby
Secretary

Encl.

RECEIVED

State of Idaho
Department of Water Resources

APPLICATION FOR PERMIT ANALYSIS SHEET BLM

INITIAL REVIEW BY: J.F. Stanton

APPLICATION NUMBER: 72-7332

CHECK:

- ☐ Source.
- ☐ Point of diversion.
- ☐ County.
- ☐ Quantity of water and period of use.
- ☐ Description of diverting works.
- ☐ Time required for beneficial use of water.
- ☐ Place of use or acres irrigated.
- ☐ Map.
- ☐ Signature.
- ☐ Fee.

Field check by: _____

Date: _____

Comments: _____

☐ Yes ☐ No Field check required.

☐ Yes ☐ No Critical groundwater area.

☐ Yes ☐ No Request dam safety information. Sent by: _____ Date: _____

☒ Yes ☐ No* In form to receipt.

*REQUEST THE FOLLOWING ADDITIONAL INFORMATION FROM THE APPLICANT:

SEND COPIES TO:

- ☐ Idaho State Health Department.
- ☐ Idaho Fish and Game Department.
- ☐ Idaho Department of Lands.
- ☐ U.S. Bureau of Land Management.
- ☐ U.S. Forest Service.
- ☐ Other _____

Copies sent by: _____

Date: _____

PROCESSING:

☐ Yes ☒ No

Platted by: JS

Map No. T-25

☐ Yes ☐ No

Other rights on same place of use. N/A

☒ Yes ☐ No*

In form for advertising.

Final date for protests: 11/28/83

☐ Yes ☒ No

Protests received. If yes, record information on 4th page of application.

FINAL REGIONAL PROCESSING REVIEW:

☒ Affidavit of publication received. Date: 11/21/83

☒ Application published correctly. If not, record action taken: _____

☒ Fee amount, receipt date & number, recorded on application.

☒ Publication dates and paper, recorded on application.

☒ Protests, dates, withdrawal, etc., recorded on application.

☒ Recommendation & initial, recorded on application.

☐ Yes ☒ No Measuring device required.

☐ Yes ☒ No Access port required.

☐ Yes ☒ No Will water be delivered by watermaster? If yes, what district? _____

☒ 8/10/83 Date of priority recommended.

Special conditions of approval or cover letter. 26

By: ADA

Date: 11/30/83

STATE OFFICE REVIEW:

LIT

26

☐ See attached sheet for more information.

By: AW

Date: 12/30/83

RECORDED