

Corral Basin Waterhole #2

AFFIDAVIT OF PUBLICATION

State of Idaho, County of Custer, ss:

I, MARGARET PARKS

Publisher of the Challis Messenger, a weekly newspaper, published at Challis,

Idaho, do solemnly swear that the notice hereto attached and made a part hereof, was published in the regular and entire issue of the Challis Messenger for 2

consecutive weeks, commencing with the issue dated NOV. 10

1983 and ending with the issue dated NOV 17 1983

Margaret Parks

Subscribed and sworn to before this 18 day of November

1983 Ethel M. Beck

Notary Public, residing at Challis, Idaho. My commission expires on

Life

RECEIVED

NOV 21 1983

Department of Water Resources
Southern District Office

MICROFILMED

NOTICE OF APPLICATION FOR WATER RIGHT

Notice is hereby given that the following application(s) have been submitted for permit to appropriate the public waters of the State of Idaho:

72-7349

U.S. DEPT. OF INTERIOR
BUREAU OF LAND MG-MT., IDAHO STATE OFFICE,
3380 AMERICANA TERRACE, BOISE, ID 83706

Source: SPRING trib. to CORRAL BASIN CREEK
Date Filed: 07/21/1983
Diversion Pt: NENE Sec 03 T 10N R 20E

Use: STOCKWATER FROM STORAGE (0.5 AF) WILDLIFE FROM STORAGE (0.5 AF) DIVERSION TO STORAGE (0.02 CFS)
In: NENE Sec 03 T 10N R 20E

72-7348

U.S. DEPT. OF INTERIOR
BUREAU OF LAND MG-MT., IDAHO STATE OFFICE,
3380 AMERICANA TERRACE, BOISE, ID 83706

Source: SPRING trib. to BROKEN WAGON CREEK
Date Filed: 07/21/1983
Diversion Pt: SWSE Sec 02 T 10N R 20E

Use: STOCKWATER FROM STORAGE (0.5 AF) WILDLIFE FROM STORAGE (0.5 AF) DIVERSION TO STORAGE (0.02 CFS)
In: SWSE Sec 02 T 10N R 20E

72-7347

U.S. DEPT. OF INTERIOR
BUREAU OF LAND MG-MT., IDAHO STATE OFFICE,
3380 AMERICANA TERRACE, BOISE, ID 83706

Source: SPRING trib. to HORSE BASIN CREEK
Date Filed: 07/21/1983
Diversion Pt: SWSE Sec 15 T 10N R 20E

Use: STOCKWATER FROM STORAGE (0.5 AF) WILDLIFE FROM STORAGE (0.5 AF) DIVERSION TO STORAGE (0.02 CFS)
In: SWSE Sec 15 T 10N R 20E

72-7346

U.S. DEPT. OF INTERIOR
BUREAU OF LAND MG-MT., IDAHO STATE OFFICE,
3380 AMERICANA TERRACE, BOISE, ID 83706

Source: SPRING trib. to CORRAL BASIN CREEK
Date Filed: 07/21/1983
Diversion Pt: SWNE Sec 03 T 10N R 20E

Use: STOCKWATER FROM STORAGE (0.5 AF) WILDLIFE FROM STORAGE (0.5 AF) DIVERSION TO STORAGE (0.02 CFS)
In: SWNE Sec 03 T 10N R 20E

72-7345

U.S. DEPT. OF INTERIOR
BUREAU OF LAND MG-MT., IDAHO STATE OFFICE,
3380 AMERICANA TERRACE, BOISE, ID 83706

Source: SPRING trib. to CORRAL BASIN CREEK
Date Filed: 07/21/1983
Diversion Pt: LOT 04 (NWNW) Sec 03 T 10N R 20E

Use: STOCKWATER FROM STORAGE (0.5 AF) WILDLIFE FROM STORAGE (0.5 AF) DIVERSION TO STORAGE (0.02 CFS)
In: LOT 04 (NWNW) Sec 03 T 10N R 20E

74-7344

U.S. DEPT. OF INTERIOR
BUREAU OF LAND MG-MT., IDAHO STATE OFFICE,
3380 AMERICANA TERRACE, BOISE, ID 83706

Source: SPRING trib. to MOSQUITO CREEK
Date Filed: 07/25/1983
Diversion Pt: SWSW Sec 03 T 09N R 19E

Use: STOCKWATER FROM STORAGE (0.5 AF) WILDLIFE FROM STORAGE (0.5 AF) DIVERSION TO STORAGE (0.02 CFS)
In: SWSW Sec 03 T 09N R 19E

72-7342

U.S. DEPT. OF INTERIOR
BUREAU OF LAND MG-MT., IDAHO STATE OFFICE,
3380 AMERICANA TERRACE, BOISE, ID 83706

Source: SPRING trib. to HORSE BASIN CREEK
Date Filed: 07/21/1983
Diversion Pt: NESE Sec 10 T 10N R 20E

Use: STOCKWATER FROM STORAGE (0.5 AF) WILDLIFE FROM STORAGE (0.5 AF) DIVERSION TO STORAGE (0.02 CFS)
In: NESE Sec 10 T 10N R 20E

72-7341

U.S. DEPT. OF INTERIOR
BUREAU OF LAND MG-MT., IDAHO STATE OFFICE,
3380 AMERICANA TERRACE, BOISE, ID 83706

Source: GROUNDWATER
Date Filed: 07/25/1983
Diversion Pt: NESW Sec 22 T 11N R 18E

Use: DOMESTIC (0.02 CFS)
In: NESW Sec 22 T 11N R 18E

72-7340

U.S. DEPT. OF INTERIOR
BUREAU OF LAND MG-MT., IDAHO STATE OFFICE,
3380 AMERICANA TERRACE, BOISE, ID 83706

Source: GROUNDWATER
Date Filed: 07/25/1983
Diversion Pt: NWNW Sec 30 T 12N R 19E

Use: DOMESTIC (0.01 CFS)
In: NWNW Sec 30 T 12N R 19E

72-7339

U.S. DEPT. OF INTERIOR
BUREAU OF LAND MG-MT., IDAHO STATE OFFICE,
3380 AMERICANA TERRACE, BOISE, ID 83706

Source: SPRING trib. to CORRAL BASIN CREEK
Date Filed: 08/15/1983
Diversion Pt: SENE Sec 09 T 10N R 20E

Use: STOCKWATER FROM STORAGE (0.5 AF) WILDLIFE FROM STORAGE (0.5 AF) DIVERSION TO STORAGE (0.02 CFS)
In: SENE Sec 09 T 10N R 20E

72-7338

U.S. DEPT. OF INTERIOR
BUREAU OF LAND MG-MT., IDAHO STATE OFFICE,
3380 AMERICANA TERRACE, BOISE, ID 83706

Source: SPRING trib. to CORRAL BASIN CREEK
Date Filed: 08/15/1983
Diversion Pt: SWNW Sec 10 T 10N R 20E

Use: STOCKWATER FROM STORAGE (0.5 AF) WILDLIFE FROM STORAGE (0.5 AF) DIVERSION TO STORAGE (0.02 CFS)
In: SWNW Sec 10 T 10N R 20E

72-7337

U.S. DEPT. OF INTERIOR
BUREAU OF LAND MG-MT., IDAHO STATE OFFICE,
3380 AMERICANA TERRACE, BOISE, ID 83706

Source: SPRING trib. to CORRAL BASIN CREEK
Date Filed: 08/15/1983
Diversion Pt: SESE Sec 33 T 11N R 20E

Use: STOCKWATER FROM STORAGE (0.5 AF) WILDLIFE FROM STORAGE (0.5 AF) DIVERSION TO STORAGE (0.02 CFS)
In: SESE Sec 33 T 11N R 20E

72-7336

U.S. DEPT. OF INTERIOR
BUREAU OF LAND MG-MT., IDAHO STATE OFFICE,
3380 AMERICANA TERRACE, BOISE, ID 83706

Source: SPRING trib. to CORRAL BASIN CREEK
Date Filed: 08/15/1983
Diversion Pt: SENW Sec 04 T 10N R 20E

U.S. DEPT. OF INTERIOR
BUREAU OF LAND MG-MT., IDAHO STATE OFFICE,
3380 AMERICANA TERRACE, BOISE, ID 83706

Source: SPRING trib. to WARM SPRINGS CREEK
Date Filed: 08/08/1983
Diversion Pt: SWSE Sec 07 T 13N R 20E

Use: STOCKWATER (0.01 CFS) WILDLIFE (0.01 CFS)
In: SWSE Sec 07 T 13N R 20E

72-7333

U.S. DEPT. OF INTERIOR
BUREAU OF LAND MG-MT., IDAHO STATE OFFICE,
3380 AMERICANA TERRACE, BOISE, ID 83706

Source: SPRING trib. to ELLIS CREEK
Date Filed: 08/10/1983
Diversion Pt: SESE Sec 17 T 16N R 20E

Use: STOCKWATER FROM STORAGE (0.5 AF) STOCKWATER FROM STORAGE (0.5 AF) WILDLIFE FROM STORAGE (0.5 AF) DIVERSION TO STORAGE (0.02 CFS)
In: SESE Sec 17 T 16N R 20E

72-7332

U.S. DEPT. OF INTERIOR
BUREAU OF LAND MG-MT., IDAHO STATE OFFICE,
3380 AMERICANA TERRACE, BOISE, ID 83706

Source: UNNAMED STREAM trib. to SALMON RIVER
Date Filed: 08/10/1983
Diversion Pt: NWNW Sec 20 T 15N R 19E

Use: STOCKWATER FROM STORAGE (0.2 AF) STOCKWATER FROM STORAGE (0.2 AF) WILDLIFE FROM STORAGE (0.2 AF) DIVERSION TO STORAGE (0.01 CFS)
In: NWNW Sec 20 T 15N R 19E

72-7331

U.S. DEPT. OF INTERIOR
BUREAU OF LAND MG-MT., IDAHO STATE OFFICE,
3380 AMERICANA TERRACE, BOISE, ID 83706

Source: SPRING trib. to ELLIS CREEK
Date Filed: 08/10/1983
Diversion Pt: SWNW Sec 32 T 16N R 20E

Use: STOCKWATER FROM STORAGE (0.5 AF) STOCKWATER FROM STORAGE (0.5 AF) WILDLIFE FROM STORAGE (0.5 AF) DIVERSION TO STORAGE (0.02 CFS)
In: SWNW Sec 32 T 16N R 20E

72-7330

U.S. DEPT. OF INTERIOR
BUREAU OF LAND MG-MT., IDAHO STATE OFFICE,
3380 AMERICANA TERRACE, BOISE, ID 83706

Source: SPRING trib. to ELLIS CREEK
Date Filed: 08/10/1983
Diversion Pt: NWSW Sec 12 T 16N R 19E

Use: STOCKWATER FROM STORAGE (0.5 AF) STOCKWATER FROM STORAGE (0.5 AF) WILDLIFE FROM STORAGE (0.5 AF) DIVERSION TO STORAGE (0.02 CFS)
In: NWSW Sec 12 T 16N R 19E

72-7329

U.S. DEPT. OF INTERIOR
BUREAU OF LAND MG-MT., IDAHO STATE OFFICE,
3380 AMERICANA TERRACE, BOISE, ID 83706

Source: SPRING trib. to CORRAL BASIN CREEK
Date Filed: 07/25/1983
Diversion Pt: NWNW Sec 08 T 10N R 20E

Use: STOCKWATER FROM STORAGE (0.5 AF) WILDLIFE FROM STORAGE (0.5 AF) DIVERSION TO STORAGE (0.02 CFS)
In: NWNW Sec 08 T 10N R 20E

72-7328

U.S. DEPT. OF INTERIOR
BUREAU OF LAND MG-
MT., IDAHO STATE OFFICE,
3380 AMERICANA TER-
RACE, BOISE, ID 83706

Source: SPRING trib. to
BROKEN WAGON CREEK
Date Filed: 07/21/1983
Diversion Pt: SESE Sec 34 T
11N R 20E

Use: STOCKWATER FROM
STORAGE (0.5 AF) WILD-
LIFE FROM STORAGE (0.5
AF) DIVERSION TO STOR-
AGE (0.02 CFS)

In: NESE Sec 34 T 11N R 20E

72-7343

U.S. DEPT. OF INTERIOR
BUREAU OF LAND MG-
MT., IDAHO STATE OFFICE,
3380 AMERICANA TER-
RACE, BOISE, ID 83706

Source: SPRING trib. to
CORRAL BASIN CREEK
Date Filed: 07/25/1983
Diversion Pt: SENW Sec 09
T 10N R 20E

Use: STOCKWATER FROM
STORAGE (0.5 AF) WILD-
LIFE FROM STORAGE (0.5
AF) DIVERSION TO STOR-

AGE (0.02 CFS)

In: SENW Sec 09 T 10N R 20E

72-7323

U.S. DEPT. OF INTERIOR
BUREAU OF LAND MG-
MT., IDAHO STATE OFFICE,
3380 AMERICANA TER-
RACE, BOISE, ID 83706

Source: SPRING trib. to
LAKE CREEK
Date Filed: 07/21/1983
Diversion Pt: SESE Sec 09 T
09N R 19E

Use: STOCKWATER (0.01
CFS) WILDLIFE (0.01 CFS)

In: SESE Sec 09 T 09N R 19E

72-7319

U.S. DEPT. OF INTERIOR
BUREAU OF LAND MG-
MT., IDAHO STATE OFFICE,
3380 AMERICANA TER-
RACE, BOISE, ID 83706

Source: SPRING trib. to
DRY HOLLOW
Date Filed: 07/21/1983
Diversion Pt: NWNW Sec 32
T 10N R 19E

Use: STOCKWATER (0.01
CFS) WILDLIFE (0.01 CFS)

In: NWNW Sec 32 T 10N R
19E

72-7312

U.S. DEPT. OF INTERIOR
BUREAU OF LAND MG-
MT., IDAHO STATE OFFICE,
3380 AMERICANA TER-
RACE, BOISE, ID 83706

Source: SPRING trib. to
BROKEN WAGON CREEK
Date Filed: 08/15/1983
Diversion Pt: NENE Sec 03
T 10N R 20E

Use: STOCKWATER FROM
STORAGE (0.5 AF) WILD-
LIFE FROM STORAGE (0.5
AF) DIVERSION TO STOR-
AGE (0.02 CFS)

In: NENE Sec 03 T 10N R 20E

72-7311

U.S. DEPT. OF INTERIOR
BUREAU OF LAND MG-
MT., IDAHO STATE OFFICE,
3380 AMERICANA TER-
RACE, BOISE, ID 83706

Source: SPRING trib. to
SINKS
Date Filed: 07/25/1983
Diversion Pt: NWSE Sec 27
T 11N R 20E

Use: STOCKWATER (0.01
CFS) WILDLIFE (0.01 CFS)

In: NESE Sec 27 T 11N R 20E

72-7327

U.S. DEPT. OF INTERIOR
BUREAU OF LAND MG-
MT., IDAHO STATE OFFICE,
3380 AMERICANA TER-
RACE, BOISE, ID 83706

Source: GROUNDWATER
Date Filed: 07/25/1983
Diversion Pt: NENE Sec 19
T 12N R 19E

Use: DOMESTIC (0.01 CFS)

In: NWNE Sec 19 T 12N R 19E

72-7326

U.S. DEPT. OF INTERIOR
BUREAU OF LAND MG-
MT., IDAHO STATE OFFICE,
3380 AMERICANA TER-
RACE, BOISE, ID 83706

Source: SPRING trib. to
SPAR CANYON CREEK
Date Filed: 07/25/1983
Diversion Pt: NESW Sec 20
T 11N R 19E

Use: STOCKWATER (0.01
CFS) WILDLIFE (0.01 CFS)

In: NESW Sec 20 T 11N R 19E

72-7325

U.S. DEPT. OF INTERIOR
BUREAU OF LAND MG-
MT., IDAHO STATE OFFICE,
3380 AMERICANA TER-
RACE, BOISE, ID 83706

Source: SPRING trib. to
DRY HOLLOW

Date Filed: 07/25/1983

Diversion Pt: NWNW Sec 31
T 10N R 19E

Use: STOCKWATER (0.01
CFS) WILDLIFE (0.01 CFS)

In: NWNW Sec 31 T 10N R
19E

72-7324

U.S. DEPT. OF INTERIOR
BUREAU OF LAND MG-
MT., IDAHO STATE OFFICE,
3380 AMERICANA TER-
RACE, BOISE, ID 83706

Source: SPRING trib. to
MALM GULCH

Date Filed: 07/25/1983

Diversion Pt: SESW Sec 25 T
12N R 19E

Use: STOCKWATER (0.01
CFS) WILDLIFE (0.01 CFS)

In: SESE Sec 25 T 12N R
19E

72-7323

U.S. DEPT. OF INTERIOR
BUREAU OF LAND MG-
MT., IDAHO STATE OFFICE,
3380 AMERICANA TER-
RACE, BOISE, ID 83706

Source: SPRING trib. to
SALMON RIVER, EAST
FORK

Date Filed: 07/25/1983

Diversion Pt: NWNW Sec 30
T 11N R 19E

Use: STOCKWATER (0.01
CFS) WILDLIFE (0.01 CFS)

In: NWNE Sec 25 T 11N R
18E NWNW Sec 30 T 11N R 19E

72-7322

U.S. DEPT. OF INTERIOR
BUREAU OF LAND MG-
MT., IDAHO STATE OFFICE,
3380 AMERICANA TER-
RACE, BOISE, ID 83706

Source: SPRING trib. to MC
GOWAN CREEK

Date Filed: 07/25/1983

Diversion Pt: SWNW Sec 29
T 12N R 21E

Use: STOCKWATER (0.01
CFS) WILDLIFE (0.01 CFS)

In: SWNE Sec 24 T 12N R 20E
LOT 01 Sec 30 T 12N R 21E
SWNW Sec 29 T 12N R 21E

72-7321

U.S. DEPT. OF INTERIOR
BUREAU OF LAND MG-
MT., IDAHO STATE OFFICE,
3380 AMERICANA TER-
RACE, BOISE, ID 83706

Source: SPRING trib. to
LONE PINE CREEK

Date Filed: 07/25/1983

Diversion Pt: SENE Sec 15 T
12N R 19E

Use: STOCKWATER (0.02
CFS) WILDLIFE (0.01 CFS)

In: NESW Sec 01 T 12N R 19E
NWSE Sec 02 T 12N R 19E

72-7318

U.S. DEPT. OF INTERIOR
BUREAU OF LAND MG-
MT., IDAHO STATE OFFICE,
3380 AMERICANA TER-
RACE, BOISE, ID 83706

Source: SPRING trib. to
BROKEN WAGON CREEK

Date Filed: 07/21/1983

Diversion Pt: NWNE Sec 35
T 11N R 20E

Use: STOCKWATER (0.04
CFS) WILDLIFE (0.01 CFS)

In: SENE Sec 06 T 10N R 21E
NWSE Sec 08 T 10N R 21E
NWNE Sec 35 T 11N R 20E

SWNE Sec 36 T 11N R 20E
SENE Sec 31 T 11N R 21E

72-7317

U.S. DEPT. OF INTERIOR
BUREAU OF LAND MG-
MT., IDAHO STATE OFFICE,
3380 AMERICANA TER-
RACE, BOISE, ID 83706

Source: SPRING trib. to
CORRAL BASIN CREEK

Date Filed: 08/15/1983

Diversion Pt: NESW Sec 04
T 10N R 20E

Use: STOCKWATER FROM
STORAGE (0.5 AF) WILD-
LIFE FROM STORAGE (0.5
AF) DIVERSION TO STOR-
AGE (0.02 CFS)

In: NWSW Sec 04 T 10N R
20E

72-7316

U.S. DEPT. OF INTERIOR
BUREAU OF LAND MG-
MT., IDAHO STATE OFFICE,
3380 AMERICANA TER-
RACE, BOISE, ID 83706

Source: SPRING trib. to
CORRAL BASIN CREEK

Date Filed: 08/15/1983

Diversion Pt: SWNW Sec 33
T 11N R 20E

Use: STOCKWATER FROM
STORAGE (0.5 AF) WILD-
LIFE FROM STORAGE (0.5
AF) DIVERSION TO STOR-
AGE (0.02 CFS)

In: SWNW Sec 33 T 11N R
20E

72-7315

U.S. DEPT. OF INTERIOR
BUREAU OF LAND MG-
MT., IDAHO STATE OFFICE,
3380 AMERICANA TER-
RACE, BOISE, ID 83706

Source: SPRING trib. to
HORSE BASIN CREEK

Date Filed: 08/15/1983

Diversion Pt: NENE Sec 27
T 10N R 20E

Use: STOCKWATER FROM
STORAGE (0.5 AF) WILD-
LIFE FROM STORAGE (0.5
AF) DIVERSION TO STOR-
AGE (0.02 CFS)

In: NWNE Sec 27 T 10N R
20E

72-7314

U.S. DEPT. OF INTERIOR
BUREAU OF LAND MG-
MT., IDAHO STATE OFFICE,
3380 AMERICANA TER-
RACE, BOISE, ID 83706

Source: SPRING trib. to
BROKEN WAGON CREEK

Date Filed: 08/15/1983

Diversion Pt: SENW Sec 02
T 10N R 20E

Use: STOCKWATER FROM
STORAGE (0.5 AF) WILD-
LIFE FROM STORAGE (0.5
AF) DIVERSION TO STOR-
AGE (0.02 CFS)

In: SWNE Sec 02 T 10N R 20E

72-7313

U.S. DEPT. OF INTERIOR
BUREAU OF LAND MG-
MT., IDAHO STATE OFFICE,
3380 AMERICANA TER-
RACE, BOISE, ID 83706

Source: SPRING trib. to
BROKEN WAGON CREEK

Date Filed: 08/15/1983

Diversion Pt: SWNW Sec 02
T 10N R 20E

Use: STOCKWATER FROM
STORAGE (0.5 AF) WILD-
LIFE FROM STORAGE (0.5
AF) DIVERSION TO STOR-
AGE (0.02 CFS)

In: SWNW Sec 02 T 10N R
20E

72-7310

U.S. DEPT. OF INTERIOR
BUREAU OF LAND MG-
MT., IDAHO STATE OFFICE,
3380 AMERICANA TER-
RACE, BOISE, ID 83706

Source: SPRING trib. to
SALMON RIVER, EAST
FORK

Date Filed: 07/21/1983

Diversion Pt: NENE Sec 15
T 10N R 18E

Use: STOCKWATER (0.01
CFS) WILDLIFE (0.01 CFS)

In: SENE Sec 15 T 10N R 18E

72-7309

U.S. DEPT. OF INTERIOR
BUREAU OF LAND MG-
MT., IDAHO STATE OFFICE,
3380 AMERICANA TER-
RACE, BOISE, ID 83706

Source: SPRING trib. to
SALMON RIVER, EAST
FORK

Date Filed: 07/21/1983

Diversion Pt: NENE Sec 03
T 09N R 18E

Use: STOCKWATER (0.01
CFS) WILDLIFE (0.01 CFS)

In: SESE Sec 05 T 09N R 18E

72-7308

U.S. DEPT. OF INTERIOR
BUREAU OF LAND MG-
MT., IDAHO STATE OFFICE,
3380 AMERICANA TER-
RACE, BOISE, ID 83706

Source: STEVENS GULCH
trib. to SALMON RIVER

Date Filed: 08/10/1983

Diversion Pt: SESE Sec 20 T
15N R 19E

Use: STOCKWATER FROM
STORAGE (0.2 AF) STOCK-
WATER FROM STORAGE
(0.2 AF) WILDLIFE FROM
STORAGE (0.2 AF) DIVER-
SION TO STORAGE (0.01
CFS)

In: SESE Sec 20 T 15N R 19E

71-7094

MC COMB, ALAN D.
MC COMBS, JEANNE M.
BOX 298, GOODING, ID
83330

Source: HELL ROARING
CREEK trib. to SALMON
RIVER

Diversion Pt: SENW Sec 17
T 08N R 14E

Use: IRRIGATION (0.06
CFS) DOMESTIC (0.02 CFS)

In: NESW Sec 17 T 08N R 14E
FOR 2 ACRES

If issued, the permit(s) will
be subject to all prior water
rights. Protests against the
granting of any permit must be
filed with the Director of the
Idaho Department of Water
Resources, 1041 Blue Lakes
Blvd. North, Twin Falls, Idaho
83301 and received on or before
NOVEMBER 27, 1983.

A. KENNETH DUNN
Director

Published 11/10 & 11/17/1983

72-7335

U.S. DEPT. OF INTERIOR
BUREAU OF LAND MG-
MT., IDAHO STATE OFFICE,
3380 AMERICANA TER-
RACE, BOISE, ID 83706

Source: SPRING trib. to
HORSE BASIN CREEK

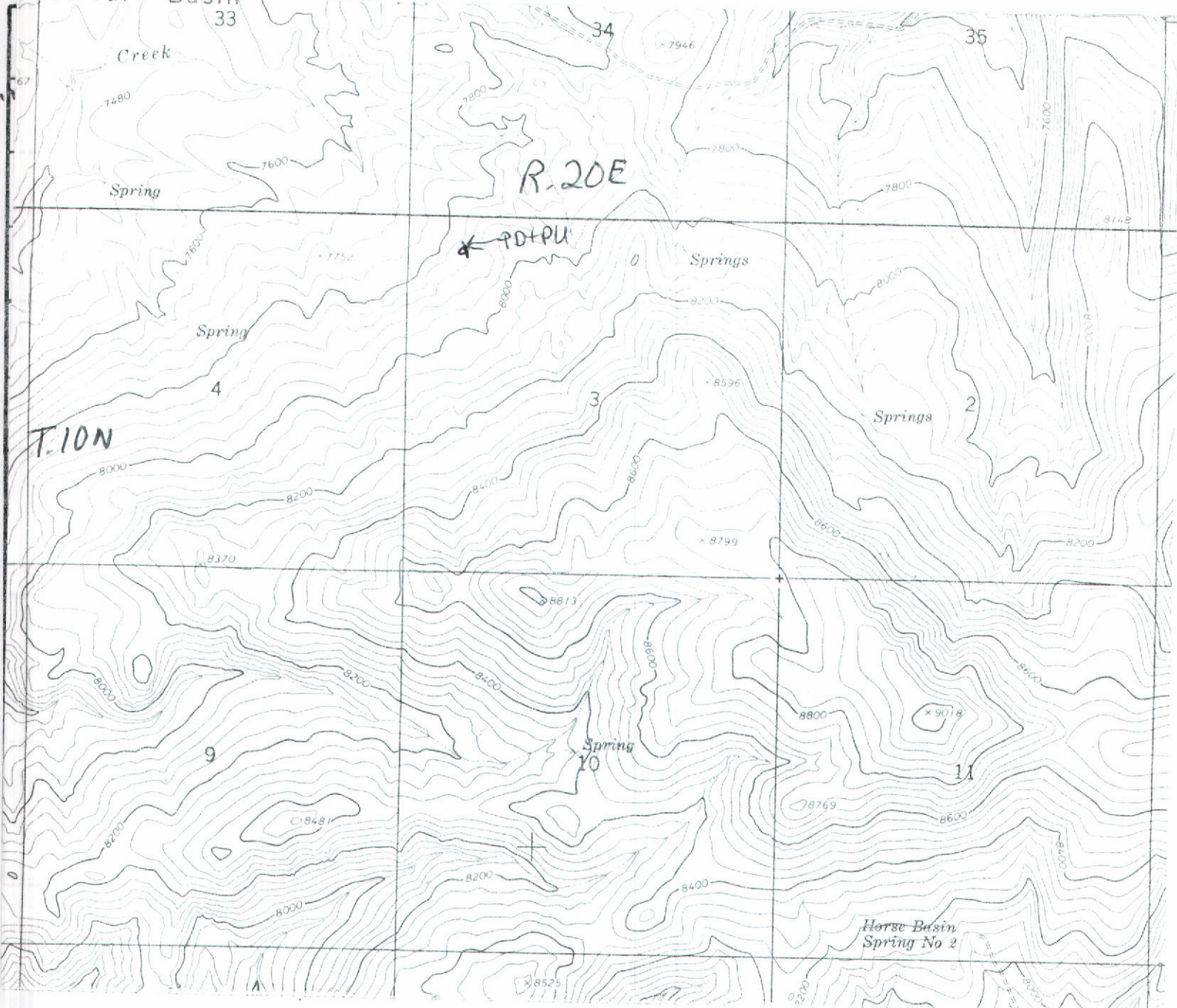
Date Filed: 08/15/1983

Diversion Pt: SWSW Sec 23 T
10N R 20E

Use: STOCKWATER FROM
STORAGE (0.5 AF) WILD-
LIFE FROM STORAGE (0.5
AF) DIVERSION TO STOR-
AGE (0.02 CFS)

In: SWSW Sec 23 T 10N R 20E

MICROFILMED



Lot 4

Point(s) of diversion: SE 1/4 NW 1/4 NW 1/4 Sec. 3 T. 10N R. 20E.

Place(s) of Use

TWP.	RGE.	SEC.	NE 1/4				NW 1/4				SW 1/4				SE 1/4				TOTALS
			NE 1/4	NW 1/4	SW 1/4	SE 1/4	NE 1/4	NW 1/4	SW 1/4	SE 1/4	NE 1/4	NW 1/4	SW 1/4	SE 1/4	NE 1/4	NW 1/4	SW 1/4	SE 1/4	
10N	20E	3						W.S											
								Lot 4											

Recommended Amendments:

- ☐ Change P.D. as reflected above
 ☐ Add P.D. as reflected above
 ☒ None
- ☐ Change P.U. as reflected above
 ☐ Add P.U. as reflected above
 ☐ Other

MICROFILMED
MAR 09 1987

Examiner's Signature Larry S Blau Date 4-16-86
 Checked by J. B. Stanton Date 4-21-86
 Approved by Jim Date 11-20-86

State of Idaho
Department of Water Resources

WATER RIGHT LICENSE

WATER RIGHT NO. 72-7345

Priority: July 21, 1983 Amount: .02 CFS 1.6 AF

This is to certify, that U.S. DEPT. OF INTERIOR
BUREAU OF LAND MGMT.
IDAHO STATE OFFICE
3380 AMERICANA TERRACE
BOISE, ID 83706

has complied with the terms and conditions
of the permit issued pursuant to Application for Permit dated July 21, 1983, and
has submitted proof to the Department of Water Resources on May 16, 1984, that
water has been applied to a beneficial use; an examination by the Department indicates
that the works have a diversion capacity of .02 cfs of water from;

SPRING tributary to CORRAL BASIN CREEK

and that a water right has been established as follows:

<u>BENEFICIAL USE</u>	<u>PERIOD OF USE</u>	<u>RATE OF DIVERSION</u>	<u>VOLUME</u>
Stockwater	01/01 to 12/31	.02 cfs	1.1 af
Stockwater storage	01/01 to 12/31		.5 af
Wildlife storage	01/01 to 12/31		.5 af
Totals		.02 CFS	1.6 AF

LOCATION OF POINT OF DIVERSION(S): LOT 4(NWNW), Sec. 3, Township 10N, Range 20E
Custer County

PLACE OF USE: Stockwater

TWN RGE SEC

10N 20E 3 NWNW

PLACE OF USE: Stockwater storage, same as Stockwater use

PLACE OF USE: Wildlife storage, same as Stockwater use

CONDITIONS/REMARKS:

1. The right to the use of the water hereby confirmed is limited to the amount which can actually be beneficially used and is restricted and appurtenant to the lands or place of use and to the purpose herein described, as provided by the laws of Idaho.
2. This right is subject to all prior water rights and may be forfeited by five years of non-use.
3. Modifications to or variance from this license must be made within the limits of Section 42-222, Idaho Code, or the applicable Idaho law.
4. This right, when considered with all other rights common to the same grazing allotment, shall be limited to the quantity of water beneficially used by the number of stock within the allotment.
5. Project also known as Corral Basin Waterhole #2.

RECORDED

MAR 09 1987

State of Idaho
Department of Water Resources

PAGE 2

WATER RIGHT LICENSE

WATER RIGHT NO. 72-7345

This license is issued pursuant to the provisions of Section 42-219, Idaho Code.
Witness the seal and signature of the Director, affixed at Boise, this 23RD day
of FEBRUARY, 1987.

Acting for the

Director



MICROFILMED

MAR 09 1987

STATE OF IDAHO
DEPARTMENT OF WATER RESOURCES
APPLICATION FOR PERMIT

923
APPROVED
JUL 28 1983

JUL 28 1983
Department of Water Resources
District Office

appropriate the public waters of the State of Idaho

1. Name of applicant USDI, Bureau of Land Management Phone (208) 756-2201

Post office address Box 430; Salmon, Idaho 83467

2. Source of water supply Spring which is a tributary of Corral Basin Creek

3. Location of point of diversion is ^{Lt 4} (NW) 1/4 of (NW) 1/4 of Section 3 Township 10N.

Range 20E. B.M. Custer County, additional points of diversion if any: _____

4. Water will be used for the following purposes:

Amount .02 cfs for diversion to storage purposes from 01/01 to 12/31 (both dates inclusive)
(cfs or acre-feet per annum)

Amount .5 a/f for Livestock from storage purposes from 05/16 to 10/15 (both dates inclusive)
(cfs or acre-feet per annum)

Amount .5 a/f for Wildlife from storage purposes from 01/01 to 12/31 (both dates inclusive)
(cfs or acre-feet per annum)

Amount _____ for _____ purposes from _____ to _____ (both dates inclusive)
(cfs or acre-feet per annum)

5. Total quantity to be appropriated:

a. .02 cubic feet per second and/or b. 1 acre-feet per annum.

6. Proposed diverting works:

a. Description of ditches, flumes, pumps, headgates, etc. A catch basin developed near a spring seep to collect and store water.

b. Height of storage dam _____ feet, active reservoir capacity _____ acre-feet; total reservoir capacity _____ acre-feet, materials used in storage dam: _____

Period of year when water will be diverted to storage _____ to _____ inclusive.
(Month/Day) (Month/Day)

c. Proposed well diameter is _____ inches; proposed depth of well is _____ feet.

7. Time required for the completion of the works and application of the water to the proposed beneficial

use is 5 years (minimum 1 year — maximum 5 years).

8. Description of proposed uses:

a. If water is not for irrigation: ^{Lt 4}
(1) Give the place of use of water: (NW) 1/4 of (NW) 1/4 of Section 3 Township 10N.

Range 20E. B.M.

(2) Amount of power to be generated: _____ horsepower under _____ feet of head.

(3) List number of each kind of livestock to be watered 100 cattle

(4) Name of municipality to be served _____, or number of families to be supplied with domestic water _____.

(5) If water is to be used for other purposes describe: Wildlife - mountain lion, antelope, bear, deer, elk

NOTED

MICROFILMED

[illegible]

Total number of acres to be irrigated

c. Describe any other water rights used for the same purposes as described above.

9. a. Who owns the property at the point of diversion United States of America

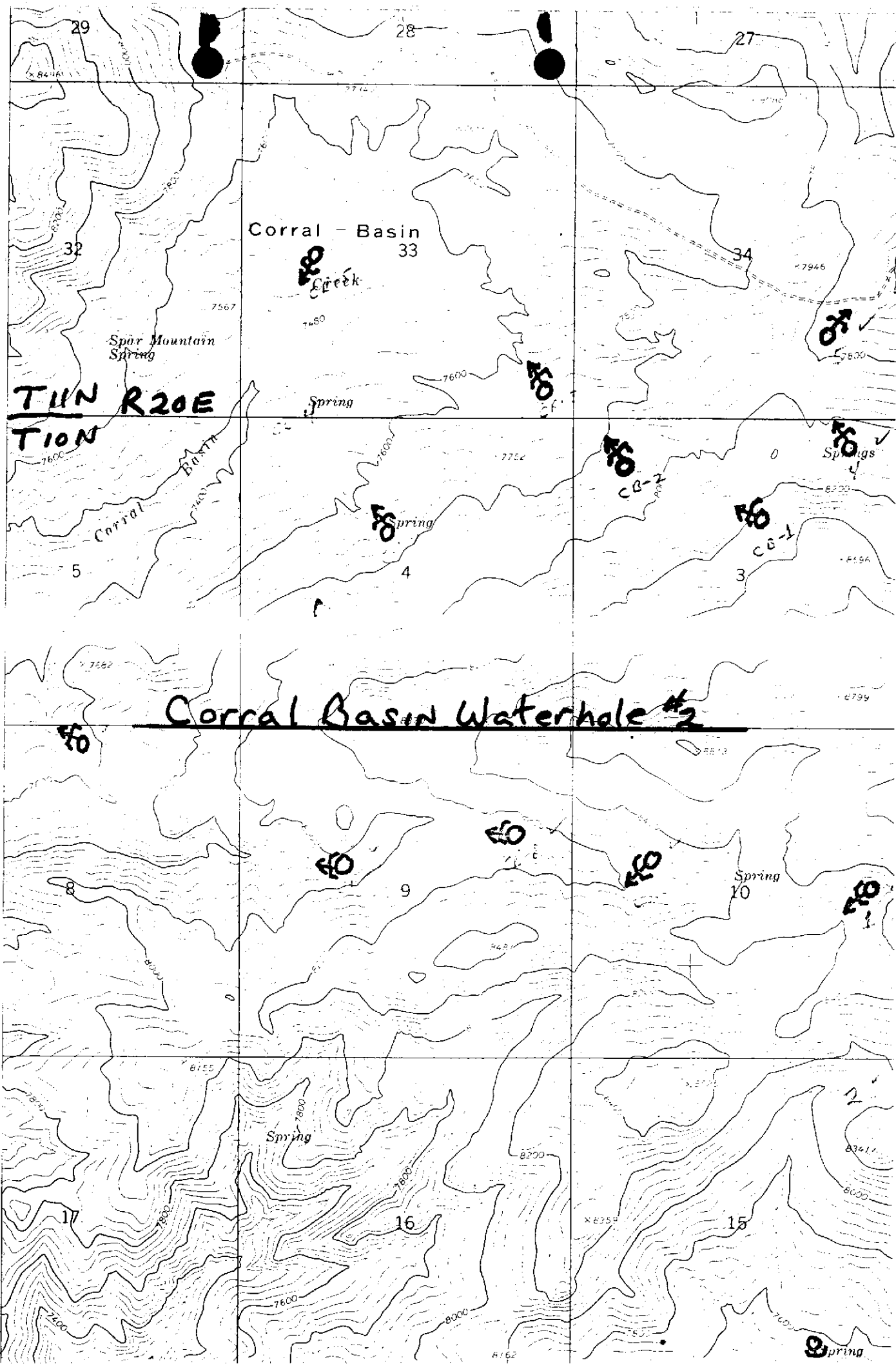
b. Who owns the land to be irrigated or place of use	United States of America
--	--------------------------

c. If the property is owned by a person other than the applicant, describe the arrangement enabling the applicant to make this filing

10. Remarks Water is used for watering purposes in the Warm Springs Allotment by per-
mittee, Will Ingram.

JDR File Number: 4201

Project Name: Corral Basin Waterhole #2



11. Map of proposed project: show clearly the proposed point of diversion, place of use, section number, township and range number.

See attached map.

[illegible]

Scale: 2 inches equal 1 mile.

BE IT KNOWN that the undersigned hereby makes application for permit to appropriate the public waters of the State of Idaho as herein set forth.

Kenneth B. Wake
(Applicant) DISTRICT MANAGER

Proposed Priority 7/21/83 marge 7-28-83 11:30 a
Received by SRL Date 7/21/83 Time 10:26
Preliminary check by JP Fee \$ 30.00 ID-910-BP9-0003
Receipted by iq Date 9-2-83 # 32644
Publication prepared by marge Date 10/31/83
Published in Custer Publishing Co
Publication dates 11/10 & 11/17/83
Publication approved marge Date 11/21/83
Protests filed by: None

Copies of protests forwarded by _____

Hearing held by _____ Date _____

Recommended for approval denial by ADM kw

ACTION OF THE DIRECTOR, DEPARTMENT OF WATER RESOURCES

This is to certify that I have examined Application for Permit to appropriate the public waters of the State of Idaho No. 72-7345, and said application is hereby APPROVED.

1. Approval of said application is subject to the following limitations and conditions:

- a. SUBJECT TO ALL PRIOR WATER RIGHTS.
- b. Proof of construction of works and application of water to beneficial use shall be submitted on or before December 1, 19 88.
- c. The rate of diversion, if water is to be used for irrigation under this permit, when combined with all other water rights for the same land shall not exceed 0.02 cubic feet per second for each acre of land.
- d. Other: Permit holder shall commence the excavation or construction of diverting works within one year of the date this permit is issued and shall proceed diligently until the project is complete.

Witness my hand this 7th day of December, 1983.

J. Glen Saxton
Chief, Operations Bureau

MICROFILMED

AFFIDAVIT OF PUBLICATION

State of Idaho, County of Custer, ss:

I, MARGARET PARKS

Publisher of the Challis Messenger, a weekly newspaper, published at Challis, Idaho, do solemnly swear that the notice hereto attached and made a part hereof, was published in the regular and entire issue of the Challis Messenger for 2 consecutive weeks, commencing with the issue dated NOV 10

1983 and ending with the issue dated NOV 17, 1983

Subscribed and sworn to before this 18 day of November, 1983

Ethel M. Beck
Notary Public, residing at Challis, Idaho. My commission expires on Life

RECEIVED

NOV 21 1983

Department of Water Resources
Southern District Office

NOTICE OF APPLICATION FOR WATER RIGHT

Notice is hereby given that the following application(s) have been submitted for permit to appropriate the public waters of the State of Idaho:

72-7349
U.S. DEPT. OF INTERIOR
BUREAU OF LAND MG-MT., IDAHO STATE OFFICE,
3380 AMERICANA TERRACE, BOISE, ID 83706

Source: SPRING trib. to CORRAL BASIN CREEK
Date Filed: 07/21/1983
Diversion Pt: NENE Sec 03 T 10N R 20E

Use: STOCKWATER FROM STORAGE (0.5 AF) WILDLIFE FROM STORAGE (0.5 AF) DIVERSION TO STORAGE (0.02 CFS)

In: NENE Sec 03 T 10N R 20E

72-7348
U.S. DEPT. OF INTERIOR
BUREAU OF LAND MG-MT., IDAHO STATE OFFICE,
3380 AMERICANA TERRACE, BOISE, ID 83706

Source: SPRING trib. to BROKEN WAGON CREEK
Date Filed: 07/21/1983
Diversion Pt: SWSE Sec 02 T 10N R 20E

Use: STOCKWATER FROM STORAGE (0.5 AF) WILDLIFE FROM STORAGE (0.5 AF) DIVERSION TO STORAGE (0.02 CFS)

In: SWSE Sec 02 T 10N R 20E

72-7347
U.S. DEPT. OF INTERIOR
BUREAU OF LAND MG-MT., IDAHO STATE OFFICE,
3380 AMERICANA TERRACE, BOISE, ID 83706

Source: SPRING trib. to HORSE BASIN CREEK
Date Filed: 07/21/1983
Diversion Pt: SWSE Sec 15 T 10N R 20E

Use: STOCKWATER FROM STORAGE (0.5 AF) WILDLIFE FROM STORAGE (0.5 AF) DIVERSION TO STORAGE (0.02 CFS)

In: SWSE Sec 15 T 10N R 20E

72-7346
U.S. DEPT. OF INTERIOR
BUREAU OF LAND MG-MT., IDAHO STATE OFFICE,
3380 AMERICANA TERRACE, BOISE, ID 83706

Source: SPRING trib. to CORRAL BASIN CREEK
Date Filed: 07/21/1983
Diversion Pt: SWNE Sec 03 T 10N R 20E

Use: STOCKWATER FROM STORAGE (0.5 AF) WILDLIFE FROM STORAGE (0.5 AF) DIVERSION TO STORAGE (0.02 CFS)

In: SWNE Sec 03 T 10N R 20E

72-7345
U.S. DEPT. OF INTERIOR
BUREAU OF LAND MG-MT., IDAHO STATE OFFICE,
3380 AMERICANA TERRACE, BOISE, ID 83706

Source: SPRING trib. to CORRAL BASIN CREEK
Date Filed: 07/21/1983
Diversion Pt: LOT 04 (NWNW) Sec 03 T 10N R 20E

Use: STOCKWATER FROM STORAGE (0.5 AF) WILDLIFE FROM STORAGE (0.5 AF) DIVERSION TO STORAGE (0.02 CFS)

In: LOT 04 (NWNW) Sec 03 T 10N R 20E

74-7344
U.S. DEPT. OF INTERIOR
BUREAU OF LAND MG-MT., IDAHO STATE OFFICE,
3380 AMERICANA TERRACE, BOISE, ID 83706

Source: SPRING trib. to MOSQUITO CREEK
Date Filed: 07/25/1983
Diversion Pt: SWSW Sec 03 T 09N R 19E

Use: STOCKWATER FROM STORAGE (0.5 AF) WILDLIFE FROM STORAGE (0.5 AF) DIVERSION TO STORAGE (0.02 CFS)

72-7342
U.S. DEPT. OF INTERIOR
BUREAU OF LAND MG-MT., IDAHO STATE OFFICE,
3380 AMERICANA TERRACE, BOISE, ID 83706

Source: SPRING trib. to HORSE BASIN CREEK
Date Filed: 07/21/1983
Diversion Pt: NESE Sec 10 T 10N R 20E

Use: STOCKWATER FROM STORAGE (0.5 AF) WILDLIFE FROM STORAGE (0.5 AF) DIVERSION TO STORAGE (0.02 CFS)

In: NESE Sec 10 T 10N R 20E

72-7341
U.S. DEPT. OF INTERIOR
BUREAU OF LAND MG-MT., IDAHO STATE OFFICE,
3380 AMERICANA TERRACE, BOISE, ID 83706

Source: GROUNDWATER
Date Filed: 07/25/1983
Diversion Pt: NESW Sec 22 T 11N R 18E

Use: DOMESTIC (0.02 CFS)

In: NESW Sec 22 T 11N R 18E

72-7340
U.S. DEPT. OF INTERIOR
BUREAU OF LAND MG-MT., IDAHO STATE OFFICE,
3380 AMERICANA TERRACE, BOISE, ID 83706

Source: GROUNDWATER
Date Filed: 07/25/1983
Diversion Pt: NWNW Sec 30 T 12N R 19E

Use: DOMESTIC (0.01 CFS)

In: NWNW Sec 30 T 12N R 19E

72-7339
U.S. DEPT. OF INTERIOR
BUREAU OF LAND MG-MT., IDAHO STATE OFFICE,
3380 AMERICANA TERRACE, BOISE, ID 83706

Source: SPRING trib. to CORRAL BASIN CREEK
Date Filed: 08/15/1983
Diversion Pt: SENE Sec 00 T 10N R 20E

Use: STOCKWATER FROM STORAGE (0.5 AF) WILDLIFE FROM STORAGE (0.5 AF) DIVERSION TO STORAGE (0.02 CFS)

In: SENE Sec 00 T 10N R 20E

72-7338
U.S. DEPT. OF INTERIOR
BUREAU OF LAND MG-MT., IDAHO STATE OFFICE,
3380 AMERICANA TERRACE, BOISE, ID 83706

Source: SPRING trib. to CORRAL BASIN CREEK
Date Filed: 08/15/1983
Diversion Pt: SWNW Sec 10 T 10N R 20E

Use: STOCKWATER FROM STORAGE (0.5 AF) WILDLIFE FROM STORAGE (0.5 AF) DIVERSION TO STORAGE (0.02 CFS)

In: SWNW Sec 10 T 10N R 20E

72-7337
U.S. DEPT. OF INTERIOR
BUREAU OF LAND MG-MT., IDAHO STATE OFFICE,
3380 AMERICANA TERRACE, BOISE, ID 83706

Source: SPRING trib. to CORRAL BASIN CREEK
Date Filed: 08/15/1983
Diversion Pt: SESE Sec 33 T 11N R 20E

Use: STOCKWATER FROM STORAGE (0.5 AF) WILDLIFE FROM STORAGE (0.5 AF) DIVERSION TO STORAGE (0.02 CFS)

In: SESE Sec 33 T 11N R 20E

72-7336
U.S. DEPT. OF INTERIOR
BUREAU OF LAND MG-MT., IDAHO STATE OFFICE,
3380 AMERICANA TERRACE, BOISE, ID 83706

Source: SPRING trib. to CORRAL BASIN CREEK
Date Filed: 08/15/1983
Diversion Pt: SENW Sec 04 T 10N R 20E

Use: STOCKWATER FROM STORAGE (0.5 AF) WILDLIFE FROM STORAGE (0.5 AF) DIVERSION TO STORAGE (0.02 CFS)

U.S. DEPT. OF INTERIOR
BUREAU OF LAND MG-MT., IDAHO STATE OFFICE,
3380 AMERICANA TERRACE, BOISE, ID 83706

Source: SPRING trib. to WARM SPRINGS CREEK
Date Filed: 08/08/1983
Diversion Pt: SWSE Sec 07 T 13N R 20E

Use: STOCKWATER (0.01 CFS) WILDLIFE (0.01 CFS)
In: SWSE Sec 07 T 13N R 20E

72-7333
U.S. DEPT. OF INTERIOR
BUREAU OF LAND MG-MT., IDAHO STATE OFFICE,
3380 AMERICANA TERRACE, BOISE, ID 83706

Source: SPRING trib. to ELLIS CREEK
Date Filed: 08/10/1983
Diversion Pt: SESE Sec 17 T 16N R 20E

Use: STOCKWATER FROM STORAGE (0.5 AF) STOCKWATER FROM STORAGE (0.5 AF) WILDLIFE FROM STORAGE (0.5 AF) DIVERSION TO STORAGE (0.02 CFS)

In: SESE Sec 17 T 16N R 20E

72-7332
U.S. DEPT. OF INTERIOR
BUREAU OF LAND MG-MT., IDAHO STATE OFFICE,
3380 AMERICANA TERRACE, BOISE, ID 83706

Source: UNNAMED STREAM trib. to SALMON RIVER
Date Filed: 08/10/1983
Diversion Pt: NWNW Sec 20 T 15N R 19E

Use: STOCKWATER FROM STORAGE (0.2 AF) STOCKWATER FROM STORAGE (0.2 AF) WILDLIFE FROM STORAGE (0.2 AF) DIVERSION TO STORAGE (0.01 CFS)

In: NWNW Sec 20 T 15N R 19E

72-7331
U.S. DEPT. OF INTERIOR
BUREAU OF LAND MG-MT., IDAHO STATE OFFICE,
3380 AMERICANA TERRACE, BOISE, ID 83706

Source: SPRING trib. to ELLIS CREEK
Date Filed: 08/10/1983
Diversion Pt: SWNW Sec 32 T 16N R 20E

Use: STOCKWATER FROM STORAGE (0.5 AF) STOCKWATER FROM STORAGE (0.5 AF) WILDLIFE FROM STORAGE (0.5 AF) DIVERSION TO STORAGE (0.02 CFS)

In: SWNW Sec 32 T 16N R 20E

72-7330
U.S. DEPT. OF INTERIOR
BUREAU OF LAND MG-MT., IDAHO STATE OFFICE,
3380 AMERICANA TERRACE, BOISE, ID 83706

Source: SPRING trib. to ELLIS CREEK
Date Filed: 08/10/1983
Diversion Pt: NWSW Sec 12 T 16N R 19E

Use: STOCKWATER FROM STORAGE (0.5 AF) STOCKWATER FROM STORAGE (0.5 AF) WILDLIFE FROM STORAGE (0.5 AF) DIVERSION TO STORAGE (0.02 CFS)

In: NWSW Sec 12 T 16N R 19E

72-7329
U.S. DEPT. OF INTERIOR
BUREAU OF LAND MG-MT., IDAHO STATE OFFICE,
3380 AMERICANA TERRACE, BOISE, ID 83706

Source: SPRING trib. to CORRAL BASIN CREEK
Date Filed: 07/25/1983
Diversion Pt: NWNW Sec 08 T 10N R 20E

Use: STOCKWATER FROM STORAGE (0.5 AF) WILDLIFE FROM STORAGE (0.5 AF) DIVERSION TO STORAGE (0.02 CFS)

In: NWNW Sec 08 T 10N R 20E

72-7328

U.S. DEPT. OF INTERIOR
BUREAU OF LAND MG-
MT., IDAHO STATE OFFICE,
3380 AMERICANA TER-
RACE, BOISE, ID 83706

Source: SPRING trib. to
BROKEN WAGON CREEK
Date Filed: 07/21/1983
Diversion Pt: SESE Sec 34 T
11N R 20E

Use: STOCKWATER FROM
STORAGE (0.5 AF) WILD-
LIFE FROM STORAGE (0.5
AF) DIVERSION TO STOR-
AGE (0.02 CFS)

In: NESE Sec 34 T 11N R 20E

72-7343

U.S. DEPT. OF INTERIOR
BUREAU OF LAND MG-
MT., IDAHO STATE OFFICE,
3380 AMERICANA TER-
RACE, BOISE, ID 83706

Source: SPRING trib. to
CORRAL BASIN CREEK
Date Filed: 07/25/1983
Diversion Pt: SENW Sec 09
T 10N R 20E

Use: STOCKWATER FROM
STORAGE (0.5 AF) WILD-
LIFE FROM STORAGE (0.5
AF) DIVERSION TO STOR-

AGE (0.02 CFS)

In: SENW Sec 09 T 10N R 20E

72-7323

U.S. DEPT. OF INTERIOR
BUREAU OF LAND MG-
MT., IDAHO STATE OFFICE,
3380 AMERICANA TER-
RACE, BOISE, ID 83706

Source: SPRING trib. to
LAKE CREEK
Date Filed: 07/21/1983
Diversion Pt: SESE Sec 09 T
09N R 19E

Use: STOCKWATER (0.01
CFS) WILDLIFE (0.01 CFS)

In: SESE Sec 09 T 09N R 19E

72-7313

U.S. DEPT. OF INTERIOR
BUREAU OF LAND MG-
MT., IDAHO STATE OFFICE,
3380 AMERICANA TER-
RACE, BOISE, ID 83706

Source: SPRING trib. to
DRY HOLLOW
Date Filed: 07/21/1983
Diversion Pt: NWNW Sec 32
T 10N R 19E

Use: STOCKWATER (0.01
CFS) WILDLIFE (0.01 CFS)

In: NWNW Sec 32 T 10N R
19E

72-7312

U.S. DEPT. OF INTERIOR
BUREAU OF LAND MG-
MT., IDAHO STATE OFFICE,
3380 AMERICANA TER-
RACE, BOISE, ID 83706

Source: SPRING trib. to
BROKEN WAGON CREEK
Date Filed: 08/15/1983
Diversion Pt: NENE Sec 03
T 10N R 20E

Use: STOCKWATER FROM
STORAGE (0.5 AF) WILD-
LIFE FROM STORAGE (0.5
AF) DIVERSION TO STOR-
AGE (0.02 CFS)

In: NENE Sec 03 T 10N R 20E

72-7311

U.S. DEPT. OF INTERIOR
BUREAU OF LAND MG-
MT., IDAHO STATE OFFICE,
3380 AMERICANA TER-
RACE, BOISE, ID 83706

Source: SPRING trib. to
SINKS
Date Filed: 07/25/1983
Diversion Pt: NWSE Sec 27
T 11N R 20E

Use: STOCKWATER (0.01
CFS) WILDLIFE (0.01 CFS)

In: NESE Sec 27 T 11N R 20E

all

72-7327

U.S. DEPT. OF INTERIOR
BUREAU OF LAND MG-
MT., IDAHO STATE OFFICE,
3380 AMERICANA TER-
RACE, BOISE, ID 83706

Source: GROUNDWATER
Date Filed: 07/25/1983
Diversion Pt: NENE Sec 19
T 12N R 19E

Use: DOMESTIC (0.01 CFS)
In: NWNE Sec 19 T 12N R 19E

72-7326

U.S. DEPT. OF INTERIOR
BUREAU OF LAND MG-
MT., IDAHO STATE OFFICE,
3380 AMERICANA TER-
RACE, BOISE, ID 83706

Source: SPRING trib. to
SPAR CANYON CREEK
Date Filed: 07/25/1983
Diversion Pt: NESW Sec 20
T 11N R 19E

Use: STOCKWATER (0.01
CFS) WILDLIFE (0.01 CFS)

In: NESW Sec 20 T 11N R 19E

72-7325

U.S. DEPT. OF INTERIOR
BUREAU OF LAND MG-
MT., IDAHO STATE OFFICE,
3380 AMERICANA TER-
RACE, BOISE, ID 83706

Source: SPRING trib. to
DRY HOLLOW
Date Filed: 07/25/1983
Diversion Pt: NWNW Sec 31
T 10N R 19E

Use: STOCKWATER (0.01
CFS) WILDLIFE (0.01 CFS)

In: NWNW Sec 31 T 10N R
19E

72-7324

U.S. DEPT. OF INTERIOR
BUREAU OF LAND MG-
MT., IDAHO STATE OFFICE,
3380 AMERICANA TER-
RACE, BOISE, ID 83706

Source: SPRING trib. to
MALM GULCH
Date Filed: 07/25/1983
Diversion Pt: SESW Sec 25 T
12N R 19E

Use: STOCKWATER (0.01
CFS) WILDLIFE (0.01 CFS)

In: SESE Sec 25 T 12N R
19E

72-7323

U.S. DEPT. OF INTERIOR
BUREAU OF LAND MG-
MT., IDAHO STATE OFFICE,
3380 AMERICANA TER-
RACE, BOISE, ID 83706

Source: SPRING trib. to
SALMON RIVER, EAST
FORK
Date Filed: 07/25/1983
Diversion Pt: NWNW Sec 30
T 11N R 19E

Use: STOCKWATER (0.01
CFS) WILDLIFE (0.01 CFS)

In: NWNE Sec 25 T 11N R
18E NWNW Sec 30 T 11N R 19E

72-7322

U.S. DEPT. OF INTERIOR
BUREAU OF LAND MG-
MT., IDAHO STATE OFFICE,
3380 AMERICANA TER-
RACE, BOISE, ID 83706

Source: SPRING trib. to MC
GOWAN CREEK
Date Filed: 07/25/1983
Diversion Pt: SWNW Sec 29
T 12N R 21E

Use: STOCKWATER (0.01
CFS) WILDLIFE (0.01 CFS)

In: SWNE Sec 24 T 12N R 20E
LOT 01 Sec 30 T 12N R 21E
SWNW Sec 29 T 12N R 21E

72-7321

U.S. DEPT. OF INTERIOR
BUREAU OF LAND MG-
MT., IDAHO STATE OFFICE,
3380 AMERICANA TER-
RACE, BOISE, ID 83706

Source: SPRING trib. to
LONE PINE CREEK
Date Filed: 07/25/1983
Diversion Pt: SENE Sec 15 T
12N R 19E

Use: STOCKWATER (0.02
CFS) WILDLIFE (0.01 CFS)

In: NESW Sec 01 T 12N R 19E
NWSE Sec 02 T 12N R 19E

72-7318

U.S. DEPT. OF INTERIOR
BUREAU OF LAND MG-
MT., IDAHO STATE OFFICE,
3380 AMERICANA TER-
RACE, BOISE, ID 83706

Source: SPRING trib. to
BROKEN WAGON CREEK
Date Filed: 07/21/1983
Diversion Pt: NWNE Sec 35
T 11N R 20E

Use: STOCKWATER (0.04
CFS) WILDLIFE (0.01 CFS)

In: SENE Sec 06 T 10N R 21E
NWSE Sec 08 T 10N R 21E
NWNE Sec 35 T 11N R 20E
SWNE Sec 36 T 11N R 20E

SENE Sec 31 T 11N R 21E

72-7317

U.S. DEPT. OF INTERIOR
BUREAU OF LAND MG-
MT., IDAHO STATE OFFICE,
3380 AMERICANA TER-
RACE, BOISE, ID 83706

Source: SPRING trib. to
CORRAL BASIN CREEK
Date Filed: 08/15/1983
Diversion Pt: NESW Sec 04
T 10N R 20E

Use: STOCKWATER FROM
STORAGE (0.5 AF) WILD-
LIFE FROM STORAGE (0.5
AF) DIVERSION TO STOR-
AGE (0.02 CFS)

In: NWSW Sec 04 T 10N R
20E

72-7316

U.S. DEPT. OF INTERIOR
BUREAU OF LAND MG-
MT., IDAHO STATE OFFICE,
3380 AMERICANA TER-
RACE, BOISE, ID 83706

Source: SPRING trib. to
CORRAL BASIN CREEK
Date Filed: 08/15/1983
Diversion Pt: SWNW Sec 33
T 11N R 20E

Use: STOCKWATER FROM
STORAGE (0.5 AF) WILD-
LIFE FROM STORAGE (0.5
AF) DIVERSION TO STOR-
AGE (0.02 CFS)

In: SWNW Sec 33 T 11N R
20E

72-7315

U.S. DEPT. OF INTERIOR
BUREAU OF LAND MG-
MT., IDAHO STATE OFFICE,
3380 AMERICANA TER-
RACE, BOISE, ID 83706

Source: SPRING trib. to
HORSE BASIN CREEK
Date Filed: 08/15/1983
Diversion Pt: NENE Sec 27
T 10N R 20E

Use: STOCKWATER FROM
STORAGE (0.5 AF) WILD-
LIFE FROM STORAGE (0.5
AF) DIVERSION TO STOR-
AGE (0.02 CFS)

In: NWNE Sec 27 T 10N R
20E

72-7314

U.S. DEPT. OF INTERIOR
BUREAU OF LAND MG-
MT., IDAHO STATE OFFICE,
3380 AMERICANA TER-
RACE, BOISE, ID 83706

Source: SPRING trib. to
BROKEN WAGON CREEK
Date Filed: 08/15/1983
Diversion Pt: SENW Sec 02
T 10N R 20E

Use: STOCKWATER FROM
STORAGE (0.5 AF) WILD-
LIFE FROM STORAGE (0.5
AF) DIVERSION TO STOR-
AGE (0.02 CFS)

In: NWNE Sec 27 T 10N R
20E

72-7313

U.S. DEPT. OF INTERIOR
BUREAU OF LAND MG-
MT., IDAHO STATE OFFICE,
3380 AMERICANA TER-
RACE, BOISE, ID 83706

Source: SPRING trib. to
BROKEN WAGON CREEK
Date Filed: 08/15/1983
Diversion Pt: SENW Sec 02
T 10N R 20E

Use: STOCKWATER FROM
STORAGE (0.5 AF) WILD-
LIFE FROM STORAGE (0.5
AF) DIVERSION TO STOR-
AGE (0.02 CFS)

In: SWNE Sec 02 T 10N R 20E

72-7312

U.S. DEPT. OF INTERIOR
BUREAU OF LAND MG-
MT., IDAHO STATE OFFICE,
3380 AMERICANA TER-
RACE, BOISE, ID 83706

Source: SPRING trib. to
BROKEN WAGON CREEK
Date Filed: 08/15/1983
Diversion Pt: SWNW Sec 02
T 10N R 20E

Use: STOCKWATER FROM
STORAGE (0.5 AF) WILD-
LIFE FROM STORAGE (0.5
AF) DIVERSION TO STOR-
AGE (0.02 CFS)

In: SWNW Sec 02 T 10N R
20E

72-7310

U.S. DEPT. OF INTERIOR
BUREAU OF LAND MG-
MT., IDAHO STATE OFFICE,
3380 AMERICANA TER-
RACE, BOISE, ID 83706

Source: SPRING trib. to
SALMON RIVER, EAST
FORK
Date Filed: 07/21/1983
Diversion Pt: NENE Sec 15
T 10N R 18E

Use: STOCKWATER (0.01
CFS) WILDLIFE (0.01 CFS)

In: SENE Sec 15 T 10N R 18E

72-7309

U.S. DEPT. OF INTERIOR
BUREAU OF LAND MG-
MT., IDAHO STATE OFFICE,
3380 AMERICANA TER-
RACE, BOISE, ID 83706

Source: SPRING trib. to
SALMON RIVER, EAST
FORK
Date Filed: 07/21/1983
Diversion Pt: NENE Sec 03
T 09N R 18E

Use: STOCKWATER (0.01
CFS) WILDLIFE (0.01 CFS)

In: SESE Sec 05 T 09N R 18E

72-7308

U.S. DEPT. OF INTERIOR
BUREAU OF LAND MG-
MT., IDAHO STATE OFFICE,
3380 AMERICANA TER-
RACE, BOISE, ID 83706

Source: STEVENS GULCH
trib. to SALMON RIVER
Date Filed: 08/10/1983
Diversion Pt: SESE Sec 20 T
15N R 19E

Use: STOCKWATER FROM
STORAGE (0.2 AF) STOCK-
WATER FROM STORAGE
(0.2 AF) WILDLIFE FROM
STORAGE (0.2 AF) DIVER-
SION TO STORAGE (0.01
CFS)

In: SESE Sec 20 T 15N R 19E

71-7094

MC COMB, ALAN D.
MC COMBS, JEANNE M.
BOX 298, GOODING, ID
83330

Source: HELL ROARING
CREEK trib. to SALMON
RIVER
Diversion Pt: SENW Sec 17
T 08N R 14E

Use: IRRIGATION (0.06
CFS) DOMESTIC (0.02 CFS)

In: NESW Sec 17 T 08N R 14E
FOR 2 ACRES

If issued, the permit(s) will
be subject to all prior water
rights. Protests against the
granting of any permit must be
filed with the Director of the
Idaho Department of Water
Resources, 1041 Blue Lakes
Blvd. North, Twin Falls, Idaho
83301 and received on or before
NOVEMBER 27, 1983.

A. KENNETH DUNN
Director

Published 11/10 & 11/17/1983

72-7335

U.S. DEPT. OF INTERIOR
BUREAU OF LAND MG-
MT., IDAHO STATE OFFICE,
3380 AMERICANA TER-
RACE, BOISE, ID 83706

Source: SPRING trib. to
HORSE BASIN CREEK
Date Filed: 08/15/1983
Diversion Pt: SWSW Sec 23 T
10N R 20E

Use: STOCKWATER FROM
STORAGE (0.5 AF) WILD-
LIFE FROM STORAGE (0.5
AF) DIVERSION TO STOR-
AGE (0.02 CFS)

In: SWSW Sec 23 T 10N R 20E



State of Idaho
DEPARTMENT OF WATER RESOURCES
STATE OFFICE, 450 W. State Street, Boise, Idaho

CECIL D. ANDRUS
Governor

A. KENNETH DUNN
Director

Mailing address:
Statehouse
Boise, Idaho 83720
(208) 334-4440

February 23, 1987

RE: Permit Nos. 72-7308/7316/7329/7330/7331/7332/7333/7335/7336/
7337/7338/7339/7342/7343/7344/7345/7346/7348/7349/7357

Bureau of Land Mgmt.
Idaho State Office
3380 Americana Terrace
Boise, ID 83706

Gentlemen:

Enclosed herewith are copies of the Water Right Licenses issued on the
above referenced permits.

Sincerely,

JIM JOHNSON
Water Rights Supervisor

JJ:sc

Enclosures

MICROFILMED
MAR 09 1987



State of Idaho

DEPARTMENT OF WATER RESOURCES

STATE OFFICE, 450 W. State Street, Boise, Idaho

CECIL D. ANDRUS

Governor

A. KENNETH DUNN

Director

Mailing address:
Statehouse
Boise, Idaho 83720
(208) 334-4440

February 2, 1987

RE: Permit Nos. 72-7308/7316/7329/7330/7331/7332/7333/7335/7336/7337/
7338/7339/7342/7343/7344/7345/7346/7348/7349/7357

Bureau of Land Mgmt.
3380 Americana Terrace
Boise, ID 83706

Gentlemen:

Enclosed are draft copies of the licenses proposed to be issued on the above referenced water rights.

If you do not concur with the information shown on the draft licenses, please advise the Department within ten (10) days. If you have any questions, please let us know; otherwise, the licenses will be issued as identified on the draft copies.

Sincerely,

JIM JOHNSON
Water Rights Supervisor

JJ:sc

Enclosures

MICROFILMED

MAR 09 1987

MEMORANDUM

TO: Files

FROM: Loren Holmes

RE: BLM Permits

During the field examination conference with BLM staff, it was discovered that the permits did not accurately describe the stockwater and livestock developments.

The storage ponds constructed were actually on-stream, not off-stream as the permits indicate and the animals do use the natural channels as a water supply. Therefore, the diversion to storage component is used as natural flow diversion on the field exams.

No amendment of the permits are recommended.

MICROFILMED
MAR 09 1987

RECEIVED

JUN 30 1986

State of Idaho
DEPARTMENT OF WATER RESOURCES
FIELD REPORT

Department of Water Resources

72-7345

Permit No.

CONTACT WITH PERMIT HOLDER

	DATE	INITIALS	REMARKS
<input type="checkbox"/> Appointment letter mailed:			
<input checked="" type="checkbox"/> Telephone call made: (List Telephone No. used)			756-2201
<input checked="" type="checkbox"/> Appointment scheduled for: (Date, time, location)	11-13-85	YB	Salmon BLM office

EXAMINATION

Bill Osborne - Range Con.
Lyle Lewis - Hydrologist
Date 11-14-85 Accompanied by Gerry Gregson - Wildlife Loren Anderson - Wildlife
If source is surface water, estimate total flow of source
Methods of measurement Meets Permit requirements?

Measurement calculations:

WELL/DIVERSION* NO.	HP	MOTOR MAKE	MOTOR SERIAL NO.	PUMP MAKE	PUMP SERIAL NO.	MEASURING DEVICE TYPE	CONDITION OF MEAS. DEV.	REMARKS

System Description Excavated earth Catchment basin Near a Spring seep

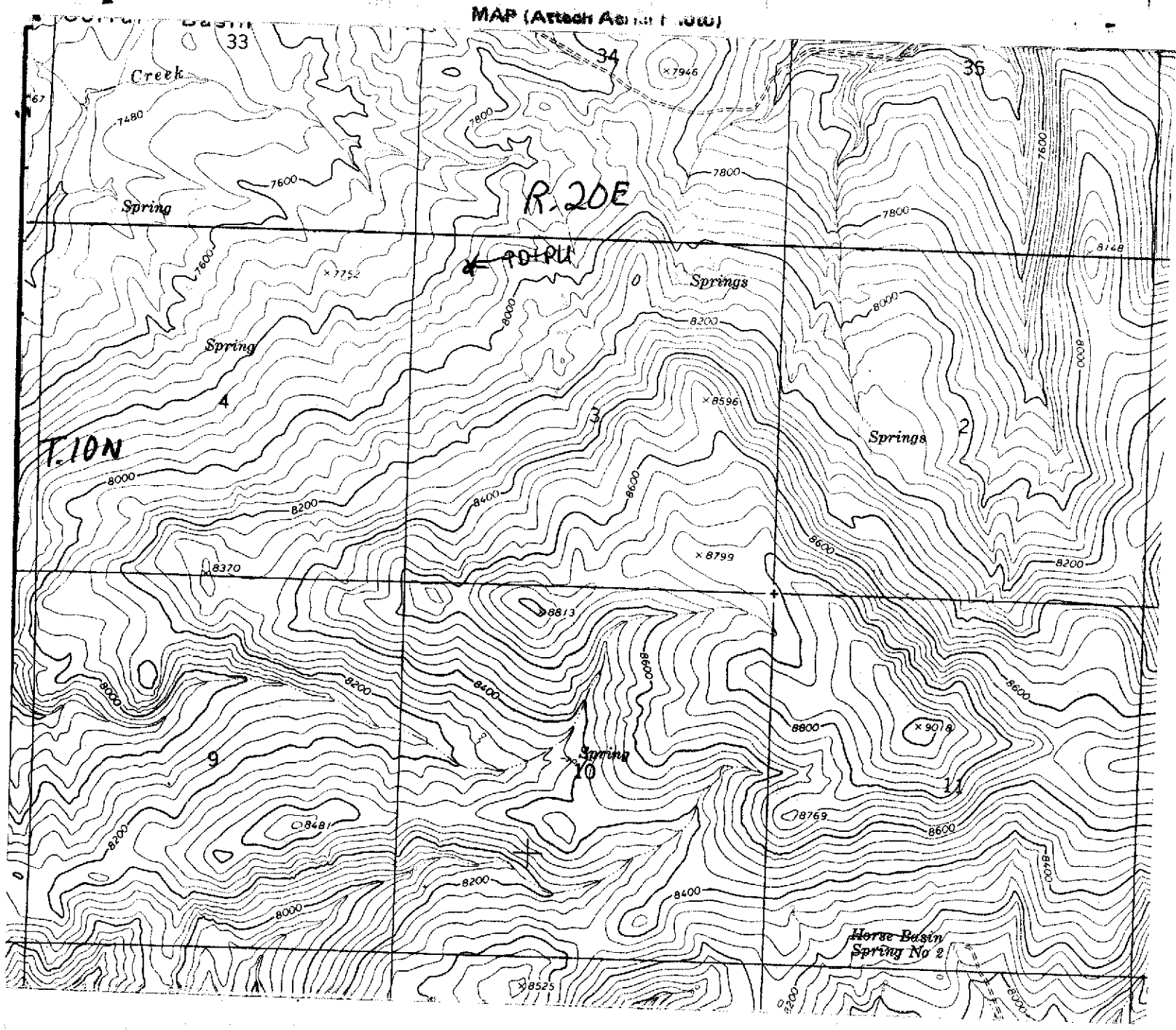
Project Name Corral Basin Waterhole #2 JDR # 4201

*Code with map on reverse side. Disregard code if only one.

RECOMMENDED AMOUNTS

USE	Irrigation requirement = Q (cfs)	V (afa)	AFA/Acre FROM TO
Wildlife	.01 cfs	.8 AFA	1/1 12/31
Stockwater	.02 cfs	1.1 afa	5/11 10/15
Wildlife Storage		.5 AF	1/1 12/31
Stockwater Storage		.5 AF	1/1 12/31
		1.6	
Total	.02 cfs	1.9 AF/Ann	

Remarks Misc. Wildlife use 30gpd x 365 days/Ann = 10,950gal/Ann
100 Antelope @ 2gpd/hd x 214 days/Ann (4/1-11/1) = 42,800 "
25 Deer @ " x " " = 10,700 "
40 Wild horses @ 12gpd/hd x 365 days/Ann = 175,200 "
239,650 " ÷ 325,851 gal/AF = .74 AF/Ann
950 cattle @ 12gpd/hd x 31 days/Ann (5/11-10/16) = 353,400 gal/Ann = 1.08 AF/Ann



Lot 4

Point(s) of diversion: SE 1/4 NW 1/4 NW 1/4 Sec 3 T. 10N R. 20E.

Place(s) of Use

TWP.	RGE.	SEC.	NEX				NWX				SWX				SEX				TOTALS
			NEX	NWX	SWX	SEX	NEX	NWX	SWX	SEX	NEX	NWX	SWX	SEX	NEX	NWX	SWX	SEX	
10N	20E	3					W.S												
							lot 4												

Recommended Amendments:

- ☐ Change P.D. as reflected above
- ☐ Add P.D. as reflected above
- ☒ None
- ☐ Change P.U. as reflected above
- ☐ Add P.U. as reflected above
- ☐ Other

MICROFILMED
MAR 09 1987

Examiner's Signature Larry S. Blain
Checked by J. G. Stanton
Approved by Jim

Date 4-16-86
Date 4-27-86
Date 11-20-86



State of Idaho

DEPARTMENT OF WATER RESOURCES

STATE OFFICE, 450 W. State Street, Boise, Idaho

JOHN V. EVANS
Governor

A. KENNETH DUNN
Director

Mailing address:
Statehouse
Boise, Idaho 83720
(208) 334-4440

June 4, 1984

Kenneth S. Walker, District Manager
Bureau of Land Management
Box 430
Salmon, ID 83467

Dear Mr. Walker:

Re: Water Rights - See attached sheet

This office acknowledges receipt of the statement of beneficial use postcards submitted for the attached list of water rights.

Before licenses can be issued, a field examination must be made by a representative of this department. We cannot tell just when these examinations will be made, but our examiner will contact you to schedule the exams at a convenient time.

If you have any questions regarding the field examinations, please contact our Southern Regional office at 734-3578.

Sincerely,

RITA I. FLECK
Secretary/Records Manager

Attachment

cc: Southern Region

RECEIVED
JUN 11 1984
SOUTHERN REGION

STATEMENTS OF BENEFICIAL USE POSTCARDS RECEIVED FROM THE

BUREAU OF LAND MANAGEMENT

5-16-84

Southern Region-IDWR

72-7297
72-7298
72-7299

72-7308
to
72-7339

72-7341
72-7342
72-7343

72-7345
72-7346
72-7347
72-7348
72-7349

73-7078
73-7079
73-7080
73-7081
73-7082
73-7083

74-7212
74-7213
74-7214
74-7215
74-7216
74-7217

74-7221
74-7225
74-7226

75-7393
75-7396
75-7397
75-7399

MICROFILMED

STATE OF IDAHO
DEPARTMENT OF WATER RESOURCES
Southern Region

1041 Blue Lakes Blvd. N.
Twin Falls, Idaho 83301
(208) 734-3578

JUNE 13, 1984

BLM - SALMON DISTRICT
BOX 430
SALMON ID 83467

RE: Permit No. 72-7345

Dear Permit Holder:

We acknowledge receipt of your statement submitted as proof of beneficial use for the above referenced permit.

Before a license can be issued, a field examination must be made by a representative of this department.

A field examiner will contact you to arrange to examine your system.

If you have any questions regarding the field examination, please contact this office by phone at 734-3578 or in person at our office at 1041 Blue Lakes Blvd. N. Twin Falls, Idaho.

Sincerely,
s/Mary A. Newby
Secretary

Bureau of Land Management
P.O. Box 430
Salmon, Idaho 83467

PLACE
13 CENT
STAMP
HERE

POSTAGE AND FEES PAID
U.S. DEPARTMENT OF THE INTERIOR
INT 413

RECEIVED

MAY 16 1984



IDAHO DEPARTMENT OF WATER RESOURCES
Department of Water Resources
STATEHOUSE
BOISE, IDAHO 83720

DEPARTMENT OF WATER RESOURCES

The Idaho Department of Water Resources will consider this card as a statement that the permit holder(s) has completed development to the extent shown below of Permit No. 72-7345.

Name(s) of Permit Holder: USDI BUREAU OF LAND MANAGEMENT

Post Office Address: BOX 430 SALMON IDAHO 83467

Tel. No. (208) 756 2201

Source of Water: SPRING

Extent of Use:

☐ Domestic

(number of households)

☒ Stockwater 100 CATTLE

(number and type of stock)

☐ Irrigation

(acres)

☐ Other

WILDLIFE - MOUNTAIN LION
ANTELOPE, BEAR, DEER, GL

Measuring Device:

Required?

☐ Yes ☒ No

Installed?

☐ Yes ☒ No

Access Port:

Required?

☐ Yes ☒ No

Installed?

☐ Yes ☒ No

The above information is a true statement of the extent to which the above numbered permit has been developed.

DISTRICT MANAGER

5-14-84

Kenneth S. Wark

e P t

MICROFILMED



State of Idaho

DEPARTMENT OF WATER RESOURCES

STATE OFFICE, 450 W. State Street, Boise, Idaho

JOHN V. EVANS
Governor

A. KENNETH DUNN
Director

Mailing address:
Statehouse
Boise, Idaho 83720
(208) 334-4440

December 22, 1983

RE: Application for Permit No's. 72-7309/7310/7311/7318/7319/7320/
7321/7322/7323/7324/7325/7326/7327/
7328/7329/7340/7341/7342/7343/7345/
7346/7347/7348/7349

U.S. Dept. of Interior
Bureau of Land Management
Idaho State Office
3380 Americana Terrace
Boise, ID 83706

Gentlemen:

Enclosed are copies of your approved Applications for Permit. We direct your attention to the conditions of approval on the fourth pages.

The 1982 Idaho Legislature added a requirement that as a permit holder you must commence the excavation or construction of diverting works within one year of the date the permits were issued, and you must proceed diligently until the projects are completed. The enclosed blue cards must be completed and returned to this office as soon as you commence construction, no later than one year from the date the permits were approved.

We have enclosed instructions entitled "Making Proof of Beneficial Use". Please read the instructions carefully since you must take further action to develop these permits into licenses.

Sincerely,

DAVID R. TUTHILL, JR., P.E.
Supervisor, Water Allocation Section

DRT:sc

Enclosures

NOTICE OF APPLICATION FOR WATER RIGHT

Notice is hereby given that the following application(s) have been submitted for permit to appropriate the public waters of the State of Idaho:

22-2245

U.S. DEPT. OF INTERIOR

BUREAU OF LAND MGMT., IDAHO STATE OFFICE, 3380 AMERICANA TERRACE,
BOISE, ID 83706

Source: SPRING trib. to CORRAL BASIN CREEK

Date Filed: 07/21/1983

Diversion Pt: LOT 04 (NWNW) Sec 03 T 10N R 20E

Use: STOCKWATER FROM STORAGE (0.5 AF)
WILDLIFE FROM STORAGE (0.5 AF)
DIVERSION TO STORAGE (0.02 CFS)

In: LOT 04 (NWNW) Sec 03 T 10N R 20E

If issued: the permit(s) will be subject to all prior water rights. Protests against the granting of any permit must be filed with the Director of the Idaho Department of Water Resources, 1041 Blue Lakes Blvd. North, Twin Falls, Idaho 83301 and received on or before NOVEMBER 23, 1983.

A. KENNETH DUNN

Director

Published 11/10 & 11/17/83.

NOTIFIED

STATE OF IDAHO

DEPARTMENT OF WATER RESOURCES
Southern Region

1041 Blue Lakes Blvd N.
Twin Falls, Idaho 83301
(208) 734-3578

OCTOBER 31, 1983

Custer Publishing Company
P. O. Box 405
Challis, Idaho 83226

Gentlemen:

Enclosed you will find a legal notice which we wish to have published on the dates indicated (once a week for two consecutive weekly issues) in your newspaper. We have allowed ample time for you to submit a galley proof to this office for review before the first publication date. If you cannot publish the notice on the proposed dates, please contact us immediately.

An affidavit of publication must be submitted to the Department along with the publication bill. Your cooperation is appreciated.

Please send the affidavit of publication and publication billing to this office before NOVEMBER 28, 1983.

Yours truly,

Mary A. Newby
Secretary

Encl.

3

State of Idaho
Department of Water Resources

APPLICATION FOR PERMIT ANALYSIS SHEET

INITIAL REVIEW BY: J. J. Stanton

APPLICATION NUMBER: USDI - BLM 72-7345

CHECK:

- ☒ Source.
☒ Point of diversion.
☒ County.
☒ Quantity of water and period of use.
☒ Description of diverting works.
☒ Time required for beneficial use of water.
☒ Place of use or acres irrigated.
☒ Map.
☒ Signature.
☒ Fee.

Field check by: _____

Date: _____

Comments: _____

☐ Yes ☒ No Field check required.

☐ Yes ☒ No Critical groundwater area.

☐ Yes ☒ No Request dam safety information. Sent by: _____ Date: _____

☐ Yes ☐ No* In form to receipt.

*REQUEST THE FOLLOWING ADDITIONAL INFORMATION FROM THE APPLICANT: _____

SEND COPIES TO:

- ☐ Idaho State Health Department. Copies sent by: _____ Date: _____
☐ Idaho Fish and Game Department. _____
☐ Idaho Department of Lands. _____
☐ U.S. Bureau of Land Management. _____
☐ U.S. Forest Service. _____
☐ Other _____

PROCESSING:

☐ Yes ☒ No Platted by: GA Map No. V-26
☐ Yes ☐ No Other rights on same place of use. N/A

☒ Yes ☐ No* In form for advertising.
Final date for protests: 11/28/83

☐ Yes ☒ No Protests received. If yes, record information on 4th page of application.

FINAL REGIONAL PROCESSING REVIEW:

- ☒ Affidavit of publication received. Date: 11/21/83
☒ Application published correctly. If not, record action taken: _____
☒ Fee amount, receipt date & number, recorded on application.
☒ Publication dates and paper, recorded on application.
☒ Protests, dates, withdrawal, etc., recorded on application.
☒ Recommendation & initial, recorded on application.
☐ Yes ☒ No Measuring device required.
☐ Yes ☒ No Access port required.
☐ Yes ☒ No Will water be delivered by watermaster? If yes, what district? _____
☒ 7/21/83 Date of priority recommended.
Special conditions of approval or cover letter. 26

By: ADM Date: 11/30/83

STATE OFFICE REVIEW:

217 26

☐ See attached sheet for more information.
By: KW Date: 12/7/83

RECORDED

POINT OF DIVERSION AND STREAM INDEX INFORMATION

TRACT	SEC	TWP	RGE	gov't lot	rediv. (R)	REACH
-------	-----	-----	-----	--------------	---------------	-------

IDAHO STREAM CODE INDEX

TRACT	SEC	TWP	RGE	gov't lot	rediv. (R)	REACH
-------	-----	-----	-----	--------------	---------------	-------

IDAHO STREAM CODE INDEX

TRACT	SEC	TWP	RGE	gov't lot	rediv. (R)	REACH
-------	-----	-----	-----	--------------	---------------	-------

IDAHO STREAM CODE INDEX

TRACT	SEC	TWP	RGE	gov't lot	rediv. (R)	REACH
-------	-----	-----	-----	--------------	---------------	-------

IDAHO STREAM CODE INDEX

TRACT	SEC	TWP	RGE	gov't lot	rediv. (R)	REACH
-------	-----	-----	-----	--------------	---------------	-------

IDAHO STREAM CODE INDEX