

**STATE OF IDAHO  
DEPARTMENT OF WATER RESOURCES  
TRANSFER OF WATER RIGHT  
TRANSFER NO. 77744**

This is to certify that: A & B IRRIGATION DISTRICT  
PO BOX 675  
RUPERT ID 83350-0675  
(208)436-3152

has requested a change to the water right(s) listed below. This change in water right(s) is authorized pursuant to the provisions of Section 42-222, Idaho Code. A summary of the changes is also listed below. The authorized change for each affected water right, including conditions of approval, is shown on the following pages of this document.

**Summary of Water Rights Before the Proposed Change**

<u>Right</u>	<u>Origin/Basis</u>	<u>Priority</u>	<u>Rate</u>	<u>Volume</u>	<u>Acre Limit</u>	<u>Total Acres</u>	<u>Source</u>
36-2080	WR/Decreed	09/09/1948	1100 cfs	250417.2 af	62,604.3	82,610.1	GROUND WATER
36-15192	WR/Decreed	04/01/1962	0.6 cfs	145.2 af	36.3	82,610.1	GROUND WATER
36-15127A	WR/Decreed	04/01/1962	31.12 cfs	7545.6 af	1,886.4	82,610.1	GROUND WATER
36-15127B	WR/Decreed	04/01/1984	28.89 cfs	7006 af	1,751.5	82,610.1	GROUND WATER
36-15193A	WR/Decreed	04/01/1962	0.21 cfs	50 af	12.5	82,610.1	GROUND WATER
36-15193B	WR/Decreed	04/01/1965	0.31 cfs	75.6 af	18.9	82,610.1	GROUND WATER
36-15195A	WR/Decreed	04/01/1962	0.87 cfs	210 af	52.5	82,610.1	GROUND WATER
36-15195B	WR/Decreed	04/01/1978	2.24 cfs	542.4 af	135.6	82,610.1	GROUND WATER
36-15196A	WR/Decreed	04/01/1962	0.29 cfs	69.6 af	17.4	82,610.1	GROUND WATER
36-15196B	WR/Decreed	04/01/1981	0.08 cfs	18.8 af	4.7	82,610.1	GROUND WATER
36-15194A	WR/Decreed	04/01/1962	0.23 cfs	54.8 af	13.7	82,610.1	GROUND WATER
36-15194B	WR/Decreed	04/01/1968	2.51 cfs	609.6 af	152.4	82,610.1	GROUND WATER

**Purpose of Transfer (Changes Proposed)**

<u>Current Number</u>	<u>Split</u>	<u>POD</u>	<u>POU</u>	<u>Add POD</u>	<u>Period of Use</u>	<u>Nature of Use</u>
36-2080	NO	NO	NO	NO	NO	NO
36-15192	NO	YES	NO	YES	NO	NO
36-15127A	NO	YES	NO	YES	NO	NO
36-15127B	NO	YES	NO	YES	NO	NO
36-15193A	NO	YES	NO	YES	NO	NO
36-15193B	NO	YES	NO	YES	NO	NO
36-15195A	NO	YES	NO	YES	NO	NO
36-15195B	NO	YES	NO	YES	NO	NO
36-15196A	NO	YES	NO	YES	NO	NO
36-15196B	NO	YES	NO	YES	NO	NO
36-15194A	NO	YES	NO	YES	NO	NO
36-15194B	NO	YES	NO	YES	NO	NO

**SUPPORT DATA**

**IN FILE #** 36-2080

STATE OF IDAHO  
DEPARTMENT OF WATER RESOURCES  
TRANSFER OF WATER RIGHT  
TRANSFER NO. 77744

**Summary of Water Rights After the Approved Change**

Existing Right	New No. (changed portion)	Transfer Rate	Transfer Volume	Acre Limit	Total Acres
36-2080	<b>36-2080</b>	1100.00 cfs	250417.2 af	62,604.3	82,610.1
36-15192	<b>36-15192</b>	0.60 cfs	145.2 af	36.3	82,610.1
36-15127A	<b>36-15127A</b>	31.12 cfs	7545.6 af	1,886.4	82,610.1
36-15127B	<b>36-15127B</b>	28.89 cfs	7006.0 af	1,751.5	82,610.1
36-15193A	<b>36-15193A</b>	0.21 cfs	50.0 af	12.5	82,610.1
36-15193B	<b>36-15193B</b>	0.31 cfs	75.6 af	18.9	82,610.1
36-15195A	<b>36-15195A</b>	0.87 cfs	210.0 af	52.5	82,610.1
36-15195B	<b>36-15195B</b>	2.24 cfs	542.4 af	135.6	82,610.1
36-15196A	<b>36-15196A</b>	0.29 cfs	69.6 af	17.4	82,610.1
36-15196B	<b>36-15196B</b>	0.08 cfs	18.8 af	4.7	82,610.1
36-15194A	<b>36-15194A</b>	0.23 cfs	54.8 af	13.7	82,610.1
36-15194B	<b>36-15194B</b>	2.51 cfs	609.6 af	152.4	82,610.1
<b>COMBINED TOTALS</b>		<b>1,100.00 cfs</b>	<b>266,744.8 af</b>	<b>66,686.2</b>	<b>82,610.1</b>

**Summary of Points of Diversion for Water Rights Listed Above After the Approved Change**

**LOCATION OF POINT(S) OF DIVERSION:**

GROUND WATER	L99 (NWSESW) Sec. 34 Twp 07S Rge 23E MINIDOKA County
GROUND WATER	L99 (NWSESW) Sec. 34 Twp 07S Rge 23E MINIDOKA County
GROUND WATER	L96 (NWSWSW) Sec. 22 Twp 07S Rge 24E MINIDOKA County
GROUND WATER	L98 (NWNWSE) Sec. 22 Twp 07S Rge 24E MINIDOKA County
GROUND WATER	L97 (NESESE) Sec. 22 Twp 07S Rge 24E MINIDOKA County
GROUND WATER	L99 (NWSWNE) Sec. 23 Twp 07S Rge 24E MINIDOKA County
GROUND WATER	L99 (NWSENE) Sec. 26 Twp 07S Rge 24E MINIDOKA County
GROUND WATER	L94 (NENWSW) Sec. 26 Twp 07S Rge 24E MINIDOKA County
GROUND WATER	L98 (NWSWNE) Sec. 28 Twp 07S Rge 24E MINIDOKA County

**STATE OF IDAHO  
DEPARTMENT OF WATER RESOURCES  
TRANSFER OF WATER RIGHT  
TRANSFER NO. 77744**

GROUND WATER	L98 (NWSWNE) Sec. 28 Twp 07S	Rge 24E	MINIDOKA County
GROUND WATER	L99 (SWNWSE) Sec. 30 Twp 07S	Rge 24E	MINIDOKA County
GROUND WATER	L99 (SWNWSE) Sec. 30 Twp 07S	Rge 24E	MINIDOKA County
GROUND WATER	L99 (NWSWNE) Sec. 31 Twp 07S	Rge 24E	MINIDOKA County
GROUND WATER	L97 (SWSENE) Sec. 32 Twp 07S	Rge 24E	MINIDOKA County
GROUND WATER	L97 (SWSENE) Sec. 32 Twp 07S	Rge 24E	MINIDOKA County
GROUND WATER	L98 (SEWSE) Sec. 33 Twp 07S	Rge 24E	MINIDOKA County
GROUND WATER	L98 (SEWSE) Sec. 33 Twp 07S	Rge 24E	MINIDOKA County
GROUND WATER	L98 (SWSEW) Sec. 34 Twp 07S	Rge 24E	MINIDOKA County
GROUND WATER	L98 (SWSWSE) Sec. 35 Twp 07S	Rge 24E	MINIDOKA County
GROUND WATER	L98 (SWSWSE) Sec. 35 Twp 07S	Rge 24E	MINIDOKA County
GROUND WATER	L99 (NESESW) Sec. 27 Twp 07S	Rge 25E	MINIDOKA County
GROUND WATER	L99 (NENESW) Sec. 29 Twp 07S	Rge 25E	MINIDOKA County
GROUND WATER	L98 (NENWSE) Sec. 30 Twp 07S	Rge 25E	MINIDOKA County
GROUND WATER	L96 (NENESW) Sec. 31 Twp 07S	Rge 25E	MINIDOKA County
GROUND WATER	L96 (NWNESW) Sec. 32 Twp 07S	Rge 25E	MINIDOKA County
GROUND WATER	L99 (NESWNW) Sec. 33 Twp 07S	Rge 25E	MINIDOKA County
GROUND WATER	L97 (SENESW) Sec. 34 Twp 07S	Rge 25E	MINIDOKA County
GROUND WATER	L98 (NWNESW) Sec. 22 Twp 08S	Rge 21E	JEROME County
GROUND WATER	L97 (NWSWSE) Sec. 24 Twp 08S	Rge 21E	JEROME County

**STATE OF IDAHO**  
**DEPARTMENT OF WATER RESOURCES**  
**TRANSFER OF WATER RIGHT**  
**TRANSFER NO. 77744**

GROUND WATER	L96 (NWSENE)	Sec. 26 Twp 08S	Rge 21E	JEROME County
GROUND WATER	L96 (NWSENE)	Sec. 26 Twp 08S	Rge 21E	JEROME County
GROUND WATER	L93 (SENESE)	Sec. 35 Twp 08S	Rge 21E	JEROME County
GROUND WATER	L99 (SWSWSW)	Sec. 35 Twp 08S	Rge 21E	JEROME County
GROUND WATER	L97 (SESESE)	Sec. 35 Twp 08S	Rge 21E	JEROME County
GROUND WATER	L97 (SESESE)	Sec. 35 Twp 08S	Rge 21E	JEROME County
GROUND WATER	L96 (SWNWSW)	Sec. 30 Twp 08S	Rge 22E	MINIDOKA County
GROUND WATER	L99 (SWNWNE)	Sec. 35 Twp 08S	Rge 22E	MINIDOKA County
GROUND WATER	L98 (SWSWSE)	Sec. 35 Twp 08S	Rge 22E	MINIDOKA County
GROUND WATER	L98 (SWSWSE)	Sec. 35 Twp 08S	Rge 22E	MINIDOKA County
GROUND WATER	L99 (NENWNE)	Sec. 1 Twp 08S	Rge 23E	MINIDOKA County
GROUND WATER	L99 (NENWNE)	Sec. 1 Twp 08S	Rge 23E	MINIDOKA County
GROUND WATER	L94 (SWSWSW)	Sec. 1 Twp 08S	Rge 23E	MINIDOKA County
GROUND WATER	L96 (SENESE)	Sec. 2 Twp 08S	Rge 23E	MINIDOKA County
GROUND WATER	L95 (SWSWSW)	Sec. 4 Twp 08S	Rge 23E	MINIDOKA County
GROUND WATER	L95 (SWSWSW)	Sec. 4 Twp 08S	Rge 23E	MINIDOKA County
GROUND WATER	L93 (NESENE)	Sec. 5 Twp 08S	Rge 23E	MINIDOKA County
GROUND WATER	L93 (NESENE)	Sec. 5 Twp 08S	Rge 23E	MINIDOKA County
GROUND WATER	L97 (NENESE)	Sec. 8 Twp 08S	Rge 23E	MINIDOKA County
GROUND WATER	L92 (SWSENE)	Sec. 10 Twp 08S	Rge 23E	MINIDOKA County

**STATE OF IDAHO  
DEPARTMENT OF WATER RESOURCES  
TRANSFER OF WATER RIGHT  
TRANSFER NO. 77744**

GROUND WATER	L96 (NESWSW) Sec. 10 Twp 08S	Rge 23E	MINIDOKA County
GROUND WATER	SENWNW Sec. 11 Twp 08S	Rge 23E	MINIDOKA County
GROUND WATER	L96 (SWSWNE) Sec. 12 Twp 08S	Rge 23E	MINIDOKA County
GROUND WATER	L96 (SWSWNE) Sec. 12 Twp 08S	Rge 23E	MINIDOKA County
GROUND WATER	L94 (SESESW) Sec. 12 Twp 08S	Rge 23E	MINIDOKA County
GROUND WATER	L94 (SESESW) Sec. 12 Twp 08S	Rge 23E	MINIDOKA County
GROUND WATER	L87 (NWNWNW) Sec. 14 Twp 08S	Rge 23E	MINIDOKA County
GROUND WATER	L87 (NWNWNW) Sec. 14 Twp 08S	Rge 23E	MINIDOKA County
GROUND WATER	L99 (SENENW) Sec. 15 Twp 08S	Rge 23E	MINIDOKA County
GROUND WATER	L99 (SENENW) Sec. 15 Twp 08S	Rge 23E	MINIDOKA County
GROUND WATER	L94 (SESESE) Sec. 15 Twp 08S	Rge 23E	MINIDOKA County
GROUND WATER	L96 (NWNENW) Sec. 17 Twp 08S	Rge 23E	MINIDOKA County
GROUND WATER	L97 (NESESE) Sec. 17 Twp 08S	Rge 23E	MINIDOKA County
GROUND WATER	L97 (NESESE) Sec. 17 Twp 08S	Rge 23E	MINIDOKA County
GROUND WATER	L99 (NWSWSE) Sec. 19 Twp 08S	Rge 23E	MINIDOKA County
GROUND WATER	L99 (NWSWSE) Sec. 19 Twp 08S	Rge 23E	MINIDOKA County
GROUND WATER	NESENE Sec. 21 Twp 08S	Rge 23E	MINIDOKA County
GROUND WATER	L99 (SWSENE) Sec. 21 Twp 08S	Rge 23E	MINIDOKA County
GROUND WATER	L97 (SWSESW) Sec. 22 Twp 08S	Rge 23E	MINIDOKA County
GROUND WATER	L95 (SWNWSW) Sec. 23 Twp 08S	Rge 23E	MINIDOKA County

**STATE OF IDAHO**  
**DEPARTMENT OF WATER RESOURCES**  
**TRANSFER OF WATER RIGHT**  
**TRANSFER NO. 77744**

GROUND WATER	L95 (SWNWSW) Sec. 23 Twp 08S	Rge 23E	MINIDOKA County
GROUND WATER	L98 (NENWNW) Sec. 24 Twp 08S	Rge 23E	MINIDOKA County
GROUND WATER	L95 (NESESW) Sec. 24 Twp 08S	Rge 23E	MINIDOKA County
GROUND WATER	L95 (NESESW) Sec. 24 Twp 08S	Rge 23E	MINIDOKA County
GROUND WATER	L97 (NWSENW) Sec. 25 Twp 08S	Rge 23E	MINIDOKA County
GROUND WATER	NENESE Sec. 26 Twp 08S	Rge 23E	MINIDOKA County
GROUND WATER	L94 (NWNWSE) Sec. 26 Twp 08S	Rge 23E	MINIDOKA County
GROUND WATER	L99 (NENENE) Sec. 27 Twp 08S	Rge 23E	MINIDOKA County
GROUND WATER	L98 (SWSENW) Sec. 27 Twp 08S	Rge 23E	MINIDOKA County
GROUND WATER	L93 (SWSESW) Sec. 27 Twp 08S	Rge 23E	MINIDOKA County
GROUND WATER	L95 (SWNESW) Sec. 28 Twp 08S	Rge 23E	MINIDOKA County
GROUND WATER	L93 (NWSWSW) Sec. 28 Twp 08S	Rge 23E	MINIDOKA County
GROUND WATER	L93 (NWSWSW) Sec. 28 Twp 08S	Rge 23E	MINIDOKA County
GROUND WATER	L91 (SESENE) Sec. 29 Twp 08S	Rge 23E	MINIDOKA County
GROUND WATER	L91 (SESENE) Sec. 29 Twp 08S	Rge 23E	MINIDOKA County
GROUND WATER	L95 (SENESE) Sec. 31 Twp 08S	Rge 23E	MINIDOKA County
GROUND WATER	L97 (NWSESW) Sec. 34 Twp 08S	Rge 23E	MINIDOKA County
GROUND WATER	L90 (SENWNW) Sec. 35 Twp 08S	Rge 23E	MINIDOKA County
GROUND WATER	L96 (NESWSW) Sec. 35 Twp 08S	Rge 23E	MINIDOKA County
GROUND WATER	L95 (SESESE) Sec. 35 Twp 08S	Rge 23E	MINIDOKA County

**STATE OF IDAHO  
DEPARTMENT OF WATER RESOURCES  
TRANSFER OF WATER RIGHT  
TRANSFER NO. 77744**

GROUND WATER	L98 (SESENE)	Sec. 1	Twp 08S	Rge 24E	MINIDOKA County
GROUND WATER	L93 (NWNESE)	Sec. 2	Twp 08S	Rge 24E	MINIDOKA County
GROUND WATER	L99 (SWSENE)	Sec. 3	Twp 08S	Rge 24E	MINIDOKA County
GROUND WATER	L99 (SWSENE)	Sec. 3	Twp 08S	Rge 24E	MINIDOKA County
GROUND WATER	L97 (SWSWNE)	Sec. 4	Twp 08S	Rge 24E	MINIDOKA County
GROUND WATER	L99 (NESWSW)	Sec. 4	Twp 08S	Rge 24E	MINIDOKA County
GROUND WATER	L99 (NESWSW)	Sec. 4	Twp 08S	Rge 24E	MINIDOKA County
GROUND WATER	L94 (SEENENW)	Sec. 6	Twp 08S	Rge 24E	MINIDOKA County
GROUND WATER	L98 (NWNWSW)	Sec. 6	Twp 08S	Rge 24E	MINIDOKA County
GROUND WATER	L91 (SENESE)	Sec. 6	Twp 08S	Rge 24E	MINIDOKA County
GROUND WATER	L95 (NESENW)	Sec. 7	Twp 08S	Rge 24E	MINIDOKA County
GROUND WATER	L97 (NESENE)	Sec. 8	Twp 08S	Rge 24E	MINIDOKA County
GROUND WATER	NENWNW	Sec. 8	Twp 08S	Rge 24E	MINIDOKA County
GROUND WATER	L98 (NWSWNE)	Sec. 10	Twp 08S	Rge 24E	MINIDOKA County
GROUND WATER	L92 (SWSWNW)	Sec. 10	Twp 08S	Rge 24E	MINIDOKA County
GROUND WATER	L95 (SESESW)	Sec. 10	Twp 08S	Rge 24E	MINIDOKA County
GROUND WATER	L98 (SWNENW)	Sec. 11	Twp 08S	Rge 24E	MINIDOKA County
GROUND WATER	L98 (SWNENW)	Sec. 11	Twp 08S	Rge 24E	MINIDOKA County
GROUND WATER	L95 (NWNWSE)	Sec. 11	Twp 08S	Rge 24E	MINIDOKA County
GROUND WATER	L97 (NENWNE)	Sec. 12	Twp 08S	Rge 24E	MINIDOKA County

**STATE OF IDAHO  
DEPARTMENT OF WATER RESOURCES  
TRANSFER OF WATER RIGHT  
TRANSFER NO. 77744**

GROUND WATER	L90 (NWNWNE) Sec. 13 Twp 08S	Rge 24E	MINIDOKA County
GROUND WATER	L90 (NWNWNE) Sec. 13 Twp 08S	Rge 24E	MINIDOKA County
GROUND WATER	L96 (SESENE) Sec. 13 Twp 08S	Rge 24E	MINIDOKA County
GROUND WATER	L99 (SWSWNW) Sec. 13 Twp 08S	Rge 24E	MINIDOKA County
GROUND WATER	L95 (SWSESW) Sec. 14 Twp 08S	Rge 24E	MINIDOKA County
GROUND WATER	L97 (SESWNW) Sec. 15 Twp 08S	Rge 24E	MINIDOKA County
GROUND WATER	L96 (NESESE) Sec. 15 Twp 08S	Rge 24E	MINIDOKA County
GROUND WATER	L90 (SESESW) Sec. 17 Twp 08S	Rge 24E	MINIDOKA County
GROUND WATER	L96 (NESWNW) Sec. 18 Twp 08S	Rge 24E	MINIDOKA County
GROUND WATER	L95 (NENWNE) Sec. 21 Twp 08S	Rge 24E	MINIDOKA County
GROUND WATER	L97 (NESWSW) Sec. 21 Twp 08S	Rge 24E	MINIDOKA County
GROUND WATER	L96 (SWNESE) Sec. 22 Twp 08S	Rge 24E	MINIDOKA County
GROUND WATER	L95 (SESESW) Sec. 23 Twp 08S	Rge 24E	MINIDOKA County
GROUND WATER	L98 (SESWNE) Sec. 26 Twp 08S	Rge 24E	MINIDOKA County
GROUND WATER	L90 (NWNENW) Sec. 26 Twp 08S	Rge 24E	MINIDOKA County
GROUND WATER	L93 (NWSW) Sec. 28 Twp 08S	Rge 24E	MINIDOKA County
GROUND WATER	L93 (SENWSE) Sec. 29 Twp 08S	Rge 24E	MINIDOKA County
GROUND WATER	L92 (SWNENW) Sec. 30 Twp 08S	Rge 24E	MINIDOKA County
GROUND WATER	L98 (SWSWNW) Sec. 30 Twp 08S	Rge 24E	MINIDOKA County

**STATE OF IDAHO  
DEPARTMENT OF WATER RESOURCES  
TRANSFER OF WATER RIGHT  
TRANSFER NO. 77744**

GROUND WATER	L98 (SWSESW) Sec. 31 Twp 08S Rge 24E MINIDOKA County
GROUND WATER	L98 (SWSESW) Sec. 31 Twp 08S Rge 24E MINIDOKA County
GROUND WATER	L99 (SEENW) Sec. 3 Twp 08S Rge 25E MINIDOKA County
GROUND WATER	L99 (SEENW) Sec. 3 Twp 08S Rge 25E MINIDOKA County
GROUND WATER	L96 (NWNWNW)Sec. 3 Twp 08S Rge 25E MINIDOKA County
GROUND WATER	L96 (NWNWNW)Sec. 3 Twp 08S Rge 25E MINIDOKA County
GROUND WATER	L98 (NESESE) Sec. 3 Twp 08S Rge 25E MINIDOKA County
GROUND WATER	L95 (NWNENE) Sec. 5 Twp 08S Rge 25E MINIDOKA County
GROUND WATER	L95 (NWNENE) Sec. 5 Twp 08S Rge 25E MINIDOKA County
GROUND WATER	L98 (NESESE) Sec. 6 Twp 08S Rge 25E MINIDOKA County
GROUND WATER	L98 (NESESE) Sec. 6 Twp 08S Rge 25E MINIDOKA County
GROUND WATER	L95 (NESESW) Sec. 11 Twp 08S Rge 25E MINIDOKA County
GROUND WATER	L99 (NWNWNW)Sec. 12 Twp 08S Rge 25E MINIDOKA County
GROUND WATER	L99 (NWNWNW)Sec. 12 Twp 08S Rge 25E MINIDOKA County
GROUND WATER	L99 (NWSWSW)Sec. 13 Twp 08S Rge 25E MINIDOKA County
GROUND WATER	L97 (SWNESW) Sec. 14 Twp 08S Rge 25E MINIDOKA County
GROUND WATER	L96 (SWSESW) Sec. 14 Twp 08S Rge 25E MINIDOKA County
GROUND WATER	L94 (NWSWSW)Sec. 15 Twp 08S Rge 25E MINIDOKA County
GROUND WATER	L94 (NWSWSW)Sec. 15 Twp 08S Rge 25E MINIDOKA County
GROUND WATER	L95 (NWNENE) Sec. 17 Twp 08S Rge 25E MINIDOKA County

**STATE OF IDAHO  
DEPARTMENT OF WATER RESOURCES  
TRANSFER OF WATER RIGHT  
TRANSFER NO. 77744**

GROUND WATER	L90 (NENWNE)	Sec. 19 Twp 08S	Rge 25E	MINIDOKA County
GROUND WATER	L90 (NENWNE)	Sec. 19 Twp 08S	Rge 25E	MINIDOKA County
GROUND WATER	L94 (SESWNW)	Sec. 19 Twp 08S	Rge 25E	MINIDOKA County
GROUND WATER	L94 (SESWNW)	Sec. 19 Twp 08S	Rge 25E	MINIDOKA County
GROUND WATER	L96 (NESESW)	Sec. 21 Twp 08S	Rge 25E	MINIDOKA County
GROUND WATER	L91 (NWNWNW)	Sec. 23 Twp 08S	Rge 25E	MINIDOKA County
GROUND WATER	L91 (NWNWNW)	Sec. 23 Twp 08S	Rge 25E	MINIDOKA County
GROUND WATER	L95 (SENWNW)	Sec. 24 Twp 08S	Rge 25E	MINIDOKA County
GROUND WATER	L99 (SWNWNW)	Sec. 1 Twp 09S	Rge 21E	JEROME County
GROUND WATER	L99 (NWNESW)	Sec. 1 Twp 09S	Rge 21E	JEROME County
GROUND WATER	L98 (NENWSW)	Sec. 3 Twp 09S	Rge 21E	JEROME County
GROUND WATER	L91 (SESESW)	Sec. 3 Twp 09S	Rge 21E	JEROME County
GROUND WATER	L95 (NWNESE)	Sec. 3 Twp 09S	Rge 21E	JEROME County
GROUND WATER	L98 (SENE)	Sec. 9 Twp 09S	Rge 21E	JEROME County
GROUND WATER	NENESW	Sec. 3 Twp 09S	Rge 22E	MINIDOKA County
GROUND WATER	L99 (NWSESE)	Sec. 3 Twp 09S	Rge 22E	MINIDOKA County
GROUND WATER	L99 (NWSESE)	Sec. 3 Twp 09S	Rge 22E	MINIDOKA County
GROUND WATER	L99 (NWSESE)	Sec. 3 Twp 09S	Rge 22E	MINIDOKA County
GROUND WATER	L97 (SENE)	Sec. 7 Twp 09S	Rge 22E	MINIDOKA County
GROUND WATER	L97 (NESENE)	Sec. 7 Twp 09S	Rge 22E	MINIDOKA County

**STATE OF IDAHO**  
**DEPARTMENT OF WATER RESOURCES**  
**TRANSFER OF WATER RIGHT**  
**TRANSFER NO. 77744**

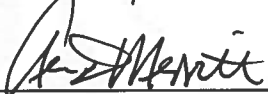
GROUND WATER	L97 (NWNENW) Sec. 8 Twp 09S Rge 22E MINIDOKA County
GROUND WATER	L98 (SESWNW) Sec. 9 Twp 09S Rge 22E MINIDOKA County
GROUND WATER	L96 (NENESW) Sec. 9 Twp 09S Rge 22E MINIDOKA County
GROUND WATER	L96 (NENESW) Sec. 9 Twp 09S Rge 22E MINIDOKA County
GROUND WATER	L99 (NESWNE) Sec. 10 Twp 09S Rge 22E MINIDOKA County
GROUND WATER	L94 (NWNWNE) Sec. 11 Twp 09S Rge 22E MINIDOKA County
GROUND WATER	L94 (NWNENW) Sec. 11 Twp 09S Rge 22E MINIDOKA County
GROUND WATER	L94 (SENENW) Sec. 11 Twp 09S Rge 22E MINIDOKA County
GROUND WATER	L97 (NESWNE) Sec. 15 Twp 09S Rge 22E MINIDOKA County
GROUND WATER	L99 (SWSWNE) Sec. 15 Twp 09S Rge 22E MINIDOKA County
GROUND WATER	L97 (NESWSE) Sec. 18 Twp 09S Rge 22E MINIDOKA County
GROUND WATER	L97 (NESWSE) Sec. 18 Twp 09S Rge 22E MINIDOKA County
GROUND WATER	L99 (NWSWNW) Sec. 19 Twp 09S Rge 22E MINIDOKA County
GROUND WATER	L99 (SESWNE) Sec. 22 Twp 09S Rge 22E MINIDOKA County
GROUND WATER	L98 (NESESE) Sec. 28 Twp 09S Rge 22E MINIDOKA County
GROUND WATER	L91 (NWNENE) Sec. 30 Twp 09S Rge 22E MINIDOKA County
GROUND WATER	L98 (SENESE) Sec. 33 Twp 09S Rge 22E MINIDOKA County
GROUND WATER	L98 (SENESE) Sec. 33 Twp 09S Rge 22E MINIDOKA County
GROUND WATER	L96 (NESENE) Sec. 2 Twp 09S Rge 23E MINIDOKA County
GROUND WATER	L95 (NESENE) Sec. 3 Twp 09S Rge 23E MINIDOKA County

STATE OF IDAHO  
DEPARTMENT OF WATER RESOURCES  
TRANSFER OF WATER RIGHT  
TRANSFER NO. 77744

GROUND WATER	L99 (NENWSW) Sec. 3 Twp 09S Rge 23E MINIDOKA County
GROUND WATER	L99 (SESENE) Sec. 6 Twp 09S Rge 23E MINIDOKA County
GROUND WATER	L92 (NWSWSE) Sec. 6 Twp 09S Rge 23E MINIDOKA County
GROUND WATER	L95 (SWNWSW) Sec. 2 Twp 10S Rge 21E JEROME County
GROUND WATER	L91 (SENWSW) Sec. 3 Twp 10S Rge 22E MINIDOKA County

Detailed Water Right Description(s) attached

Dated this 9<sup>th</sup> day of April, 20 12

  
\_\_\_\_\_  
Southern Region Manager

**WATER RIGHT NO. 36-2080**  
**As Modified by Transfer No. 77744**

In accordance with the approval of Transfer No. 77744, Water Right No. 36-2080 is now described as follows.

**Right Holder:** UNITED STATES OF AMERICA ACTING THROUGH  
 BUREAU OF RECLAMATION  
 REGIONAL DIRECTOR PN CODE-3100  
 1150 N CURTIS RD STE 100  
 BOISE ID 83706-1234

**Priority Date:** September 09, 1948

**Source:** GROUND WATER

<u>BENEFICIAL USE</u>	<u>From</u>	<u>To</u>	<u>Diversion Rate</u>	<u>Volume</u>
IRRIGATION	04/01	to 10/31	1,100.00 CFS	250,417.2 AF
			1,100.00 CFS	250,417.2 AF

**CONDITIONS OF APPROVAL**

1. The boundary encompassing the place of use for this water right is described with a digital boundary as authorized by Idaho law. The data comprising the digital boundary are stored in the electronic document management system of the Department and are incorporated into this approval by this reference. A map depicting the place of use is attached to this approval document to illustrate the place of use described by the digital boundary.
2. Place of use within the boundary of the A & B Irrigation District service area, pursuant to Section 43-323, Idaho Code.
3. The following convention is used to convert the government lots listed in the points of diversion to the official U.S. government tract designation: Lot 99 = Tract A, Lot 98 = Tract B, Lot 97 = Tract C, Lot 96 = Tract D, Lot 95 = Tract E, Lot 94 = Tract F, Lot 93 = Tract G, Lot 92 = Tract H, Lot 91 = Tract J, Lot 90 = Tract K, Lot 89 = Tract L, Lot 88 = Tract M, Lot 87 = Tract N, Lot 86 = Tract O, Lot 85 = Tract P, Lot 84 = Tract Q, Lot 83 = Tract R, Lot 82 = Tract S.
4. The point of diversion located in the NWNENW (Lot 94 = Tract F), S11, T9S, R22E is limited to a maximum diversion rate of 3.00 cfs.
5. The point of diversion located in the SENE (Lot 98 = Tract B), S9, T9S, R21E is limited to a maximum diversion rate of 6.00 cfs.
6. The point of diversion located in the NESESE (Lot 96 = Tract D), S15, T8S, R24E and the point of diversion located in the NWNENW (Lot 90 = Tract K), S26, T8S, R24E are limited to a combined maximum diversion rate of 10.00 cfs.
7. The point of diversion located in the NWSW (Lot 93 = Tract G), S28, T8S, R24E, the point of diversion located in the SESENE (Lot 96 = Tract D), S13, T8S, R24E and the point of diversion located in the SWSESW (Lot 96 = Tract D), S14, T8S, R25E are limited to a combined maximum diversion rate of 17.00 cfs.

**WATER RIGHT NO. 36-2080**  
**As Modified by Transfer No. 77744**

8. The point of diversion located in the SWSWNW (Lot 98 = Tract B), S30, T8S, R24E and the point of diversion located in the SWSWNW (Lot 99 = Tract A), S13, T8S, R24E and the point of diversion in the SESESW (Lot 90 = Tract K) S17, T8S, R24E and the point of diversion in the SESESW (Lot 95 = Tract E) S20, T8S, R24E and the point of diversion in the SWNWNW (Lot 99 = Tract A) S1, T9S, R21E and the point of diversion in the NWNENW (Lot 97 = Tract C) S 8, T9S, R22E are limited to a Combined maximum diversion rate of 45.0 cfs.
9. This right is limited to the irrigation of 62,604.3 acres within the place of use described above in a single irrigation season.
10. Rights 36-2080, 36-15127A, 36-15127B, 36-15192, 36-15193A, 36-15193B, 36-15194A, 36-15194B, 36-15195A, 36-15195B, 36-15196A and 36-15196B when combined shall not exceed a total diversion rate of 1,100 cfs, a total annual maximum diversion volume of 266,744.8 af, and the irrigation of 66,686.2 acres.
11. Use of water under this right will be regulated by a watermaster with responsibility for the distribution of water among appropriators within a water district. At the time of this approval, this water right is within State Water District No. 130.
12. The right holder shall maintain lockable controlling works of a type approved by the Department in a manner that will provide the watermaster suitable control of the diversion(s).
13. Prior to the diversion and use of water under Transfer approval 77744, the right holder shall install and maintain acceptable measuring device(s) at the authorized point(s) of diversion in accordance with Department specifications, or shall obtain an approved variance from the Department to determine the amount of water diverted from power records or to maintain an existing measuring device.
14. Upon specific notification of the Department, the right holder shall install and maintain data loggers to record water usage information at the authorized point(s) of diversion in accordance with Department specifications.
15. The beneficial use of the water represented hereby is for the landowners within the A & B Irrigation District pursuant to contract No. 14-06-100-2386, dated February 9, 1962 (as may be supplemented or amended) between the United States of America through the U.S. Bureau of Reclamation and the A & B Irrigation District for irrigation and other permitted purposes as authorized by the Act of September 30, 1950, CH. 1114, 64 STAT. 1083, of the North Side Pumping Division of the Minidoka Irrigation Project.
16. Right holder shall comply with the drilling permit requirements of Section 42-235, Idaho Code and applicable Well Construction Rules of the Department.
17. Relift drain pumps used within the boundary of the district for reuse of return flow.
18. Right Nos. 36-15127B, 36-15193B, 36-15194B, 36-15195B and 36-15196B are enlargements of this right pursuant to Section 42-1426, IDAHO CODE.

**WATER RIGHT NO. 36-2080**  
**As Modified by Transfer No. 77744**

19. The period of use for the irrigation described in this approval may be extended to a beginning date of 3/15 and an ending date of 11/15 provided that beneficial use of the water can be shown and other elements of the right are not exceeded. The use of water before 4/1 and after 10/31 is subordinate to all water rights having no subordinated early or late irrigation use and a priority date earlier than the SRBA partial decree date.
20. The right holder shall accomplish the change authorized by this transfer within one (1) year of the date of this approval.
21. Failure of the right holder to comply with the conditions of this transfer is cause for the Director to rescind approval of the transfer.
22. Pursuant to Section 42-1412(6), Idaho Code, this water right is subject to such general provisions necessary for the definition of the rights or for the efficient administration of water rights as may be determined by the Snake River Basin Adjudication court at a point in time no later than the entry of the final unified decree.

This water right is subject to all prior water rights and shall be administered in accordance with Idaho law and applicable rules of the Department of Water Resources.

Dated this 9<sup>th</sup> day of April, 2012

  
\_\_\_\_\_  
Southern Region Manager

**WATER RIGHT NO. 36-15127A  
As Modified by Transfer No. 77744**

In accordance with the approval of Transfer No. 77744, Water Right No. 36-15127A is now described as follows.

**Right Holder:** UNITED STATES OF AMERICA ACTING THROUGH  
BUREAU OF RECLAMATION  
REGIONAL DIRECTOR PN CODE-3100  
1150 N CURTIS RD STE 100  
BOISE ID 83706-1234

**Priority Date:** April 01, 1962

**Source:** GROUND WATER

<u>BENEFICIAL USE</u>	<u>From</u>	<u>To</u>	<u>Diversion Rate</u>	<u>Volume</u>
IRRIGATION	04/01	to 10/31	31.12 CFS	7,545.6 AF
			31.12 CFS	7,545.6 AF

**CONDITIONS OF APPROVAL**

1. The boundary encompassing the place of use for this water right is described with a digital boundary as authorized by Idaho law. The data comprising the digital boundary are stored in the electronic document management system of the Department and are incorporated into this approval by this reference. A map depicting the place of use is attached to this approval document to illustrate the place of use described by the digital boundary.
2. Place of use within the boundary of the A & B Irrigation District service area, pursuant to Section 43-323, Idaho Code.
3. The following convention is used to convert the government lots listed in the points of diversion to the official U.S. government tract designation: Lot 99 = Tract A, Lot 98 = Tract B, Lot 97 = Tract C, Lot 96 = Tract D, Lot 95 = Tract E, Lot 94 = Tract F, Lot 93 = Tract G, Lot 92 = Tract H, Lot 91 = Tract J, Lot 90 = Tract K, Lot 89 = Tract L, Lot 88 = Tract M, Lot 87 = Tract N, Lot 86 = Tract O, Lot 85 = Tract P, Lot 84 = Tract Q, Lot 83 = Tract R, Lot 82 = Tract S.
4. The point of diversion located in the NWNENW (Lot 94 = Tract F), S11, T9S, R22E is limited to a maximum diversion rate of 3.00 cfs.
5. The point of diversion located in the SENE (Lot 98 = Tract B), S9, T9S, R21E is limited to a maximum diversion rate of 6.00 cfs.
6. The point of diversion located in the NESESE (Lot 96 = Tract D), S15, T8S, R24E and the point of diversion located in the NWNENW (Lot 90 = Tract K), S26, T8S, R24E are limited to a combined maximum diversion rate of 10.00 cfs.
7. The point of diversion located in the NWSW (Lot 93 = Tract G), S28, T8S, R24E, the point of diversion located in the SESENE (Lot 96 = Tract D), S13, T8S, R24E and the point of diversion located in the SWSESW (Lot 96 = Tract D), S14, T8S, R25E are limited to a combined maximum diversion rate of 17.00 cfs.

**WATER RIGHT NO. 36-15127A**  
**As Modified by Transfer No. 77744**

8. The point of diversion located in the SWSWNW (Lot 98 = Tract B), S30, T8S, R24E and the point of diversion located in the SWSWNW (Lot 99 = Tract A), S13, T8S, R24E and the point of diversion in the SESESW (Lot 90 = Tract K) S17, T8S, R24E and the point of diversion in the SESESW (Lot 95 = Tract E) S20, T8S, R24E and the point of diversion in the SWNWNW (Lot 99 = Tract A) S1, T9S, R21E and the point of diversion in the NWNENW (Lot 97 = Tract C) S 8, T9S, R22E are limited to a Combined maximum diversion rate of 45.0 cfs.
9. This right is limited to the irrigation of 1886.4 acres within the place of use described above in a single irrigation season.
10. Rights 36-2080, 36-15127A, 36-15127B, 36-15192, 36-15193A, 36-15193B, 36-15194A, 36-15194B, 36-15195A, 36-15195B, 36-15196A and 36-15196B when combined shall not exceed a total diversion rate of 1,100 cfs, a total annual maximum diversion volume of 266,744.8 af, and the irrigation of 66,686.2 acres.
11. Use of water under this right will be regulated by a watermaster with responsibility for the distribution of water among appropriators within a water district. At the time of this approval, this water right is within State Water District No. 130.
12. The right holder shall maintain lockable controlling works of a type approved by the Department in a manner that will provide the watermaster suitable control of the diversion(s).
13. Prior to the diversion and use of water under Transfer approval 77744, the right holder shall install and maintain acceptable measuring device(s) at the authorized point(s) of diversion in accordance with Department specifications, or shall obtain an approved variance from the Department to determine the amount of water diverted from power records or to maintain an existing measuring device.
14. Upon specific notification of the Department, the right holder shall install and maintain data loggers to record water usage information at the authorized point(s) of diversion in accordance with Department specifications.
15. The beneficial use of the water represented hereby is for the landowners within the A & B Irrigation District pursuant to contract No. 14-06-100-2386, dated February 9, 1962 (as may be supplemented or amended) between the United States of America through the U.S. Bureau of Reclamation and the A & B Irrigation District for irrigation and other permitted purposes as authorized by the Act of September 30, 1950, CH. 1114, 64 STAT. 1083, of the North Side Pumping Division of the Minidoka Irrigation Project.
16. Right holder shall comply with the drilling permit requirements of Section 42-235, Idaho Code and applicable Well Construction Rules of the Department.
17. Relift drain pumps used within the boundary of the district for reuse of return flow.
18. The period of use for the irrigation described in this approval may be extended to a beginning date of 3/15 and an ending date of 11/15 provided that beneficial use of the water can be shown and other elements of the right are not exceeded. The use of water before 4/1 and after 10/31 is subordinate to all water rights having no subordinated early or late irrigation use and a priority date earlier than the SRBA partial decree date.

**WATER RIGHT NO. 36-15127A**  
**As Modified by Transfer No. 77744**

19. The right holder shall accomplish the change authorized by this transfer within one (1) year of the date of this approval.
20. Failure of the right holder to comply with the conditions of this transfer is cause for the Director to rescind approval of the transfer.
21. Pursuant to Section 42-1412(6), Idaho Code, this water right is subject to such general provisions necessary for the definition of the rights or for the efficient administration of water rights as may be determined by the Snake River Basin Adjudication court at a point in time no later than the entry of the final unified decree.

This water right is subject to all prior water rights and shall be administered in accordance with Idaho law and applicable rules of the Department of Water Resources.

Dated this 9<sup>th</sup> day of April, 20 12

  
\_\_\_\_\_  
Southern Region Manager

**WATER RIGHT NO. 36-15127B  
As Modified by Transfer No. 77744**

In accordance with the approval of Transfer No. 77744, Water Right No. 36-15127B is now described as follows.

**Right Holder:** UNITED STATES OF AMERICA ACTING THROUGH  
BUREAU OF RECLAMATION  
REGIONAL DIRECTOR PN CODE-3100  
1150 N CURTIS RD STE 100  
BOISE ID 83706-1234

**Priority Date:** April 01, 1984

**Source:** GROUND WATER

<u>BENEFICIAL USE</u>	<u>From</u>	<u>To</u>	<u>Diversion Rate</u>	<u>Volume</u>
IRRIGATION	04/01 to 10/31		28.89 CFS	7,006.0 AF
			28.89 CFS	7,006.0 AF

**CONDITIONS OF APPROVAL**

1. The boundary encompassing the place of use for this water right is described with a digital boundary as authorized by Idaho law. The data comprising the digital boundary are stored in the electronic document management system of the Department and are incorporated into this approval by this reference. A map depicting the place of use is attached to this approval document to illustrate the place of use described by the digital boundary.
2. Place of use within the boundary of the A & B Irrigation District service area, pursuant to Section 43-323, Idaho Code.
3. The following convention is used to convert the government lots listed in the points of diversion to the official U.S. government tract designation: Lot 99 = Tract A, Lot 98 = Tract B, Lot 97 = Tract C, Lot 96 = Tract D, Lot 95 = Tract E, Lot 94 = Tract F, Lot 93 = Tract G, Lot 92 = Tract H, Lot 91 = Tract J, Lot 90 = Tract K, Lot 89 = Tract L, Lot 88 = Tract M, Lot 87 = Tract N, Lot 86 = Tract O, Lot 85 = Tract P, Lot 84 = Tract Q, Lot 83 = Tract R, Lot 82 = Tract S.
4. The point of diversion located in the NWNENW (Lot 94 = Tract F), S11, T9S, R22E is limited to a maximum diversion rate of 3.00 cfs.
5. The point of diversion located in the SENE (Lot 98 = Tract B), S9, T9S, R21E is limited to a maximum diversion rate of 6.00 cfs.
6. The point of diversion located in the NESESE (Lot 96 = Tract D), S15, T8S, R24E and the point of diversion located in the NWNENW (Lot 90 = Tract K), S26, T8S, R24E are limited to a combined maximum diversion rate of 10.00 cfs.
7. The point of diversion located in the NWSW (Lot 93 = Tract G), S28, T8S, R24E, the point of diversion located in the SESENE (Lot 96 = Tract D), S13, T8S, R24E and the point of diversion located in the SWSESW (Lot 96 = Tract D), S14, T8S, R25E are limited to a combined maximum diversion rate of 17.00 cfs.

**WATER RIGHT NO. 36-15127B**  
**As Modified by Transfer No. 77744**

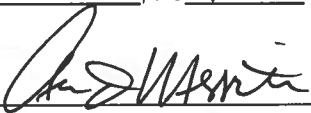
8. The point of diversion located in the SWSWNW (Lot 98 = Tract B), S30, T8S, R24E and the point of diversion located in the SWSWNW (Lot 99 = Tract A), S13, T8S, R24E and the point of diversion in the SESESW (Lot 90 = Tract K) S17, T8S, R24E and the point of diversion in the SESESW (Lot 95 = Tract E) S20, T8S, R24E and the point of diversion in the SWNWNW (Lot 99 = Tract A) S1, T9S, R21E and the point of diversion in the NWNENW (Lot 97 = Tract C) S 8, T9S, R22E are limited to a Combined maximum diversion rate of 45.0 cfs.
9. This right is limited to the irrigation of 1751.5 acres within the place of use described above in a single irrigation season.
10. Rights 36-2080, 36-15127A, 36-15127B, 36-15192, 36-15193A, 36-15193B, 36-15194A, 36-15194B, 36-15195A, 36-15195B, 36-15196A and 36-15196B when combined shall not exceed a total diversion rate of 1,100 cfs, a total annual maximum diversion volume of 266,744.8 af, and the irrigation of 66,686.2 acres.
11. Use of water under this right will be regulated by a watermaster with responsibility for the distribution of water among appropriators within a water district. At the time of this approval, this water right is within State Water District No. 130.
12. The right holder shall maintain lockable controlling works of a type approved by the Department in a manner that will provide the watermaster suitable control of the diversion(s).
13. Prior to the diversion and use of water under Transfer approval 77744, the right holder shall install and maintain acceptable measuring device(s) at the authorized point(s) of diversion in accordance with Department specifications, or shall obtain an approved variance from the Department to determine the amount of water diverted from power records or to maintain an existing measuring device.
14. Upon specific notification of the Department, the right holder shall install and maintain data loggers to record water usage information at the authorized point(s) of diversion in accordance with Department specifications.
15. Right holder shall comply with the drilling permit requirements of Section 42-235, Idaho Code and applicable Well Construction Rules of the Department.
16. Relift drain pumps used within the boundary of the district for reuse of return flow.
17. The beneficial use of the water represented hereby is for the landowners within the A & B Irrigation District pursuant to contract No. 14-06-100-2386, dated February 9, 1962 (as may be supplemented or amended) between the United States of America through the U.S. Bureau of Reclamation and the A & B Irrigation District for irrigation and other permitted purposes as authorized by the Act of September 30, 1950, CH. 1114, 64 STAT. 1083, of the North Side Pumping Division of the Minidoka Irrigation Project.
18. The period of use for the irrigation described in this approval may be extended to a beginning date of 3/15 and an ending date of 11/15 provided that beneficial use of the water can be shown and other elements of the right are not exceeded. The use of water before 4/1 and after 10/31 is subordinate to all water rights having no subordinated early or late irrigation use and a priority date earlier than the SRBA partial decree date.

**WATER RIGHT NO. 36-15127B**  
**As Modified by Transfer No. 77744**

19. This right is based upon an enlargement of right No. 36-2080 pursuant to Section 42-1426, Idaho Code. This right is subordinate to all water rights with a priority date earlier than April 12, 1994, that are not decreed as enlargements pursuant to Section 42-1426, Idaho Code. As between water rights decreed as enlargements as pursuant to Section 42-1426, Idaho Code, the earlier priority right is the superior right.
20. The right holder shall accomplish the change authorized by this transfer within one (1) year of the date of this approval.
21. Failure of the right holder to comply with the conditions of this transfer is cause for the Director to rescind approval of the transfer.
22. Pursuant to Section 42-1412(6), Idaho Code, this water right is subject to such general provisions necessary for the definition of the rights or for the efficient administration of water rights as may be determined by the Snake River Basin Adjudication court at a point in time no later than the entry of the final unified decree.

This water right is subject to all prior water rights and shall be administered in accordance with Idaho law and applicable rules of the Department of Water Resources.

Dated this 9<sup>th</sup> day of April, 2012

  
\_\_\_\_\_  
Southern Region Manager

**WATER RIGHT NO. 36-15192  
As Modified by Transfer No. 77744**

In accordance with the approval of Transfer No. 77744, Water Right No. 36-15192 is now described as follows.

**Right Holder:** UNITED STATES OF AMERICA ACTING THROUGH  
BUREAU OF RECLAMATION  
REGIONAL DIRECTOR PN CODE-3100  
1150 N CURTIS RD STE 100  
BOISE ID 83706-1234

**Priority Date:** April 01, 1962

**Source:** GROUND WATER

<u>BENEFICIAL USE</u>	<u>From</u>	<u>To</u>	<u>Diversion Rate</u>	<u>Volume</u>
IRRIGATION	04/01	to 10/31	0.60 CFS	145.2 AF
			0.60 CFS	145.2 AF

**CONDITIONS OF APPROVAL**

1. The boundary encompassing the place of use for this water right is described with a digital boundary as authorized by Idaho law. The data comprising the digital boundary are stored in the electronic document management system of the Department and are incorporated into this approval by this reference. A map depicting the place of use is attached to this approval document to illustrate the place of use described by the digital boundary.
2. Place of use within the boundary of the A & B Irrigation District service area, pursuant to Section 43-323, Idaho Code.
3. The following convention is used to convert the government lots listed in the points of diversion to the official U.S. government tract designation: Lot 99 = Tract A, Lot 98 = Tract B, Lot 97 = Tract C, Lot 96 = Tract D, Lot 95 = Tract E, Lot 94 = Tract F, Lot 93 = Tract G, Lot 92 = Tract H, Lot 91 = Tract J, Lot 90 = Tract K, Lot 89 = Tract L, Lot 88 = Tract M, Lot 87 = Tract N, Lot 86 = Tract O, Lot 85 = Tract P, Lot 84 = Tract Q, Lot 83 = Tract R, Lot 82 = Tract S.
4. The point of diversion located in the NWNENW (Lot 94 = Tract F), S11, T9S, R22E is limited to a maximum diversion rate of 3.00 cfs.
5. The point of diversion located in the SENE (Lot 98 = Tract B), S9, T9S, R21E is limited to a maximum diversion rate of 6.00 cfs.
6. The point of diversion located in the NESESE (Lot 96 = Tract D), S15, T8S, R24E and the point of diversion located in the NWNENW (Lot 90 = Tract K), S26, T8S, R24E are limited to a combined maximum diversion rate of 10.00 cfs.
7. The point of diversion located in the NWSW (Lot 93 = Tract G), S28, T8S, R24E, the point of diversion located in the SESENE (Lot 96 = Tract D), S13, T8S, R24E and the point of diversion located in the SWSESW (Lot 96 = Tract D), S14, T8S, R25E are limited to a combined maximum diversion rate of 17.00 cfs.

**WATER RIGHT NO. 36-15192**  
**As Modified by Transfer No. 77744**

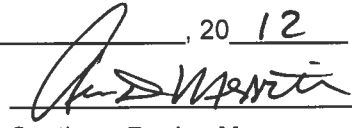
8. The point of diversion located in the SWSWNW (Lot 98 = Tract B), S30, T8S, R24E and the point of diversion located in the SWSWNW (Lot 99 = Tract A), S13, T8S, R24E and the point of diversion in the SESESW (Lot 90 = Tract K) S17, T8S, R24E and the point of diversion in the SESESW (Lot 95 = Tract E) S20, T8S, R24E and the point of diversion in the SWNWNW (Lot 99 = Tract A) S1, T9S, R21E and the point of diversion in the NWNENW (Lot 97 = Tract C) S 8, T9S, R22E are limited to a Combined maximum diversion rate of 45.0 cfs.
9. This right is limited to the irrigation of 36.3 acres within the place of use described above in a single irrigation season.
10. Rights 36-2080, 36-15127A, 36-15127B, 36-15192, 36-15193A, 36-15193B, 36-15194A, 36-15194B, 36-15195A, 36-15195B, 36-15196A and 36-15196B when combined shall not exceed a total diversion rate of 1,100 cfs, a total annual maximum diversion volume of 266,744.8 af, and the irrigation of 66,686.2 acres.
11. Use of water under this right will be regulated by a watermaster with responsibility for the distribution of water among appropriators within a water district. At the time of this approval, this water right is within State Water District No. 130.
12. The right holder shall maintain lockable controlling works of a type approved by the Department in a manner that will provide the watermaster suitable control of the diversion(s).
13. Prior to the diversion and use of water under Transfer approval 77744, the right holder shall install and maintain acceptable measuring device(s) at the authorized point(s) of diversion in accordance with Department specifications, or shall obtain an approved variance from the Department to determine the amount of water diverted from power records or to maintain an existing measuring device.
14. Upon specific notification of the Department, the right holder shall install and maintain data loggers to record water usage information at the authorized point(s) of diversion in accordance with Department specifications.
15. The beneficial use of the water represented hereby is for the landowners within the A & B Irrigation District pursuant to contract No. 14-06-100-2386, dated February 9, 1962 (as may be supplemented or amended) between the United States of America through the U.S. Bureau of Reclamation and the A & B Irrigation District for irrigation and other permitted purposes as authorized by the Act of September 30, 1950, CH. 1114, 64 STAT. 1083, of the North Side Pumping Division of the Minidoka Irrigation Project.
16. Relift drain pumps used within the boundary of the district for reuse of return flow.
17. Right holder shall comply with the drilling permit requirements of Section 42-235, Idaho Code and applicable Well Construction Rules of the Department.
18. The period of use for the irrigation described in this approval may be extended to a beginning date of 3/15 and an ending date of 11/15 provided that beneficial use of the water can be shown and other elements of the right are not exceeded. The use of water before 4/1 and after 10/31 is subordinate to all water rights having no subordinated early or late irrigation use and a priority date earlier than the SRBA partial decree date.

**WATER RIGHT NO. 36-15192**  
**As Modified by Transfer No. 77744**

19. The right holder shall accomplish the change authorized by this transfer within one (1) year of the date of this approval.
20. Failure of the right holder to comply with the conditions of this transfer is cause for the Director to rescind approval of the transfer.
21. Pursuant to Section 42-1412(6), Idaho Code, this water right is subject to such general provisions necessary for the definition of the rights or for the efficient administration of water rights as may be determined by the Snake River Basin Adjudication court at a point in time no later than the entry of the final unified decree.

This water right is subject to all prior water rights and shall be administered in accordance with Idaho law and applicable rules of the Department of Water Resources.

Dated this 9<sup>th</sup> day of April, 2012

  
\_\_\_\_\_  
Southern Region Manager

**WATER RIGHT NO. 36-15193A  
As Modified by Transfer No. 77744**

In accordance with the approval of Transfer No. 77744, Water Right No. 36-15193A is now described as follows.

**Right Holder:** UNITED STATES OF AMERICA ACTING THROUGH  
BUREAU OF RECLAMATION  
REGIONAL DIRECTOR PN CODE-3100  
1150 N CURTIS RD STE 100  
BOISE ID 83706-1234

**Priority Date:** April 01, 1962

**Source:** GROUND WATER

<u>BENEFICIAL USE</u>	<u>From</u>	<u>To</u>	<u>Diversion Rate</u>	<u>Volume</u>
IRRIGATION	04/01	to 10/31	0.21 CFS	50.0 AF
			0.21 CFS	50.0 AF

**CONDITIONS OF APPROVAL**

1. The boundary encompassing the place of use for this water right is described with a digital boundary as authorized by Idaho law. The data comprising the digital boundary are stored in the electronic document management system of the Department and are incorporated into this approval by this reference. A map depicting the place of use is attached to this approval document to illustrate the place of use described by the digital boundary.
2. Place of use within the boundary of the A & B Irrigation District service area, pursuant to Section 43-323, Idaho Code.
3. The following convention is used to convert the government lots listed in the points of diversion to the official U.S. government tract designation: Lot 99 = Tract A, Lot 98 = Tract B, Lot 97 = Tract C, Lot 96 = Tract D, Lot 95 = Tract E, Lot 94 = Tract F, Lot 93 = Tract G, Lot 92 = Tract H, Lot 91 = Tract J, Lot 90 = Tract K, Lot 89 = Tract L, Lot 88 = Tract M, Lot 87 = Tract N, Lot 86 = Tract O, Lot 85 = Tract P, Lot 84 = Tract Q, Lot 83 = Tract R, Lot 82 = Tract S.
4. The point of diversion located in the NWNENW (Lot 94 = Tract F), S11, T9S, R22E is limited to a maximum diversion rate of 3.00 cfs.
5. The point of diversion located in the SENE (Lot 98 = Tract B), S9, T9S, R21E is limited to a maximum diversion rate of 6.00 cfs.
6. The point of diversion located in the NESESE (Lot 96 = Tract D), S15, T8S, R24E and the point of diversion located in the NWNENW (Lot 90 = Tract K), S26, T8S, R24E are limited to a combined maximum diversion rate of 10.00 cfs.
7. The point of diversion located in the NWSW (Lot 93 = Tract G), S28, T8S, R24E, the point of diversion located in the SESENE (Lot 96 = Tract D), S13, T8S, R24E and the point of diversion located in the SWSESW (Lot 96 = Tract D), S14, T8S, R25E are limited to a combined maximum diversion rate of 17.00 cfs.

**WATER RIGHT NO. 36-15193A**  
**As Modified by Transfer No. 77744**

8. The point of diversion located in the SWSWNW (Lot 98 = Tract B), S30, T8S, R24E and the point of diversion located in the SWSWNW (Lot 99 = Tract A), S13, T8S, R24E and the point of diversion in the SESESW (Lot 90 = Tract K) S17, T8S, R24E and the point of diversion in the SESESW (Lot 95 = Tract E) S20, T8S, R24E and the point of diversion in the SWNWNW (Lot 99 = Tract A) S1, T9S, R21E and the point of diversion in the NWNENW (Lot 97 = Tract C) S 8, T9S, R22E are limited to a Combined maximum diversion rate of 45.0 cfs.
9. This right is limited to the irrigation of 12.5 acres within the place of use described above in a single irrigation season.
10. Rights 36-2080, 36-15127A, 36-15127B, 36-15192, 36-15193A, 36-15193B, 36-15194A, 36-15194B, 36-15195A, 36-15195B, 36-15196A and 36-15196B when combined shall not exceed a total diversion rate of 1,100 cfs, a total annual maximum diversion volume of 266,744.8 af, and the irrigation of 66,686.2 acres.
11. Use of water under this right will be regulated by a watermaster with responsibility for the distribution of water among appropriators within a water district. At the time of this approval, this water right is within State Water District No. 130.
12. The right holder shall maintain lockable controlling works of a type approved by the Department in a manner that will provide the watermaster suitable control of the diversion(s).
13. Prior to the diversion and use of water under Transfer approval 77744, the right holder shall install and maintain acceptable measuring device(s) at the authorized point(s) of diversion in accordance with Department specifications, or shall obtain an approved variance from the Department to determine the amount of water diverted from power records or to maintain an existing measuring device.
14. Upon specific notification of the Department, the right holder shall install and maintain data loggers to record water usage information at the authorized point(s) of diversion in accordance with Department specifications.
15. The beneficial use of the water represented hereby is for the landowners within the A & B Irrigation District pursuant to contract No. 14-06-100-2386, dated February 9, 1962 (as may be supplemented or amended) between the United States of America through the U.S. Bureau of Reclamation and the A & B Irrigation District for irrigation and other permitted purposes as authorized by the Act of September 30, 1950, CH. 1114, 64 STAT. 1083, of the North Side Pumping Division of the Minidoka Irrigation Project.
16. Right holder shall comply with the drilling permit requirements of Section 42-235, Idaho Code and applicable Well Construction Rules of the Department.
17. Relift drain pumps used within the boundary of the district for reuse of return flow.
18. The period of use for the irrigation described in this approval may be extended to a beginning date of 3/15 and an ending date of 11/15 provided that beneficial use of the water can be shown and other elements of the right are not exceeded. The use of water before 4/1 and after 10/31 is subordinate to all water rights having no subordinated early or late irrigation use and a priority date earlier than the SRBA partial decree date.

**WATER RIGHT NO. 36-15193A**  
**As Modified by Transfer No. 77744**

19. The right holder shall accomplish the change authorized by this transfer within one (1) year of the date of this approval.
20. Failure of the right holder to comply with the conditions of this transfer is cause for the Director to rescind approval of the transfer.
21. Pursuant to Section 42-1412(6), Idaho Code, this water right is subject to such general provisions necessary for the definition of the rights or for the efficient administration of water rights as may be determined by the Snake River Basin Adjudication court at a point in time no later than the entry of the final unified decree.

This water right is subject to all prior water rights and shall be administered in accordance with Idaho law and applicable rules of the Department of Water Resources.

Dated this 9<sup>th</sup> day of April, 2012

  
\_\_\_\_\_  
Southern Region Manager

**WATER RIGHT NO. 36-15193B**  
**As Modified by Transfer No. 77744**

In accordance with the approval of Transfer No. 77744, Water Right No. 36-15193B is now described as follows.

**Right Holder:** UNITED STATES OF AMERICA ACTING THROUGH  
BUREAU OF RECLAMATION  
REGIONAL DIRECTOR PN CODE-3100  
1150 N CURTIS RD STE 100  
BOISE ID 83706-1234

**Priority Date:** April 01, 1965

**Source:** GROUND WATER

<u>BENEFICIAL USE</u>	<u>From</u>	<u>To</u>	<u>Diversion Rate</u>	<u>Volume</u>
IRRIGATION	04/01	to 10/31	0.31 CFS	75.6 AF
			0.31 CFS	75.6 AF

**CONDITIONS OF APPROVAL**

1. The boundary encompassing the place of use for this water right is described with a digital boundary as authorized by Idaho law. The data comprising the digital boundary are stored in the electronic document management system of the Department and are incorporated into this approval by this reference. A map depicting the place of use is attached to this approval document to illustrate the place of use described by the digital boundary.
2. Place of use within the boundary of the A & B Irrigation District service area, pursuant to Section 43-323, Idaho Code.
3. The following convention is used to convert the government lots listed in the points of diversion to the official U.S. government tract designation: Lot 99 = Tract A, Lot 98 = Tract B, Lot 97 = Tract C, Lot 96 = Tract D, Lot 95 = Tract E, Lot 94 = Tract F, Lot 93 = Tract G, Lot 92 = Tract H, Lot 91 = Tract J, Lot 90 = Tract K, Lot 89 = Tract L, Lot 88 = Tract M, Lot 87 = Tract N, Lot 86 = Tract O, Lot 85 = Tract P, Lot 84 = Tract Q, Lot 83 = Tract R, Lot 82 = Tract S.
4. The point of diversion located in the NWNENW (Lot 94 = Tract F), S11, T9S, R22E is limited to a maximum diversion rate of 3.00 cfs.
5. The point of diversion located in the SENE (Lot 98 = Tract B), S9, T9S, R21E is limited to a maximum diversion rate of 6.00 cfs.
6. The point of diversion located in the NESESE (Lot 96 = Tract D), S15, T8S, R24E and the point of diversion located in the NWNENW (Lot 90 = Tract K), S26, T8S, R24E are limited to a combined maximum diversion rate of 10.00 cfs.
7. The point of diversion located in the NWSW (Lot 93 = Tract G), S28, T8S, R24E, the point of diversion located in the SESENE (Lot 96 = Tract D), S13, T8S, R24E and the point of diversion located in the SWSESW (Lot 96 = Tract D), S14, T8S, R25E are limited to a combined maximum diversion rate of 17.00 cfs.

**WATER RIGHT NO. 36-15193B**  
**As Modified by Transfer No. 77744**

8. The point of diversion located in the SWSWNW (Lot 98 = Tract B), S30, T8S, R24E and the point of diversion located in the SWSWNW (Lot 99 = Tract A), S13, T8S, R24E and the point of diversion in the SESESW (Lot 90 = Tract K) S17, T8S, R24E and the point of diversion in the SESESW (Lot 95 = Tract E) S20, T8S, R24E and the point of diversion in the SWNWNW (Lot 99 = Tract A) S1, T9S, R21E and the point of diversion in the NWNENW (Lot 97 = Tract C) S 8, T9S, R22E are limited to a Combined maximum diversion rate of 45.0 cfs.
9. This right is limited to the irrigation of 18.9 acres within the place of use described above in a single irrigation season.
10. Rights 36-2080, 36-15127A, 36-15127B, 36-15192, 36-15193A, 36-15193B, 36-15194A, 36-15194B, 36-15195A, 36-15195B, 36-15196A and 36-15196B when combined shall not exceed a total diversion rate of 1,100 cfs, a total annual maximum diversion volume of 266,744.8 af, and the irrigation of 66,686.2 acres.
11. Use of water under this right will be regulated by a watermaster with responsibility for the distribution of water among appropriators within a water district. At the time of this approval, this water right is within State Water District No. 130.
12. The right holder shall maintain lockable controlling works of a type approved by the Department in a manner that will provide the watermaster suitable control of the diversion(s).
13. Prior to the diversion and use of water under Transfer approval 77744, the right holder shall install and maintain acceptable measuring device(s) at the authorized point(s) of diversion in accordance with Department specifications, or shall obtain an approved variance from the Department to determine the amount of water diverted from power records or to maintain an existing measuring device.
14. Upon specific notification of the Department, the right holder shall install and maintain data loggers to record water usage information at the authorized point(s) of diversion in accordance with Department specifications.
15. Relift drain pumps used within the boundary of the district for reuse of return flow.
16. Right holder shall comply with the drilling permit requirements of Section 42-235, Idaho Code and applicable Well Construction Rules of the Department.
17. The beneficial use of the water represented hereby is for the landowners within the A & B Irrigation District pursuant to contract No. 14-06-100-2386, dated February 9, 1962 (as may be supplemented or amended) between the United States of America through the U.S. Bureau of Reclamation and the A & B Irrigation District for irrigation and other permitted purposes as authorized by the Act of September 30, 1950, CH. 1114, 64 STAT. 1083, of the North Side Pumping Division of the Minidoka Irrigation Project.
18. This right is based upon an enlargement of right No. 36-2080 pursuant to Section 42-1426, Idaho Code. This right is subordinate to all water rights with a priority date earlier than April 12, 1994, that are not decreed as enlargements pursuant to Section 42-1426, Idaho Code. As between water rights decreed as enlargements as pursuant to Section 42-1426, Idaho Code, the earlier priority right is the superior right.

**WATER RIGHT NO. 36-15193B**  
**As Modified by Transfer No. 77744**

19. The period of use for the irrigation described in this approval may be extended to a beginning date of 3/15 and an ending date of 11/15 provided that beneficial use of the water can be shown and other elements of the right are not exceeded. The use of water before 4/1 and after 10/31 is subordinate to all water rights having no subordinated early or late irrigation use and a priority date earlier than the SRBA partial decree date.
20. The right holder shall accomplish the change authorized by this transfer within one (1) year of the date of this approval.
21. Failure of the right holder to comply with the conditions of this transfer is cause for the Director to rescind approval of the transfer.
22. Pursuant to Section 42-1412(6), Idaho Code, this water right is subject to such general provisions necessary for the definition of the rights or for the efficient administration of water rights as may be determined by the Snake River Basin Adjudication court at a point in time no later than the entry of the final unified decree.

This water right is subject to all prior water rights and shall be administered in accordance with Idaho law and applicable rules of the Department of Water Resources.

Dated this 9<sup>th</sup> day of April, 2012

  
\_\_\_\_\_  
Southern Region Manager

**WATER RIGHT NO. 36-15194A**  
**As Modified by Transfer No. 77744**

In accordance with the approval of Transfer No. 77744, Water Right No. 36-15194A is now described as follows.

**Right Holder:** UNITED STATES OF AMERICA ACTING THROUGH  
BUREAU OF RECLAMATION  
REGIONAL DIRECTOR PN CODE-3100  
1150 N CURTIS RD STE 100  
BOISE ID 83706-1234

**Priority Date:** April 01, 1962

**Source:** GROUND WATER

<u>BENEFICIAL USE</u>	<u>From</u>	<u>To</u>	<u>Diversion Rate</u>	<u>Volume</u>
IRRIGATION	04/01	to 10/31	0.23 CFS	54.8 AF
			0.23 CFS	54.8 AF

**CONDITIONS OF APPROVAL**

1. The boundary encompassing the place of use for this water right is described with a digital boundary as authorized by Idaho law. The data comprising the digital boundary are stored in the electronic document management system of the Department and are incorporated into this approval by this reference. A map depicting the place of use is attached to this approval document to illustrate the place of use described by the digital boundary.
2. Place of use within the boundary of the A & B Irrigation District service area, pursuant to Section 43-323, Idaho Code.
3. The following convention is used to convert the government lots listed in the points of diversion to the official U.S. government tract designation: Lot 99 = Tract A, Lot 98 = Tract B, Lot 97 = Tract C, Lot 96 = Tract D, Lot 95 = Tract E, Lot 94 = Tract F, Lot 93 = Tract G, Lot 92 = Tract H, Lot 91 = Tract J, Lot 90 = Tract K, Lot 89 = Tract L, Lot 88 = Tract M, Lot 87 = Tract N, Lot 86 = Tract O, Lot 85 = Tract P, Lot 84 = Tract Q, Lot 83 = Tract R, Lot 82 = Tract S.
4. The point of diversion located in the NWNENW (Lot 94 = Tract F), S11, T9S, R22E is limited to a maximum diversion rate of 3.00 cfs.
5. The point of diversion located in the SENE (Lot 98 = Tract B), S9, T9S, R21E is limited to a maximum diversion rate of 6.00 cfs.
6. The point of diversion located in the NESESE (Lot 96 = Tract D), S15, T8S, R24E and the point of diversion located in the NWNENW (Lot 90 = Tract K), S26, T8S, R24E are limited to a combined maximum diversion rate of 10.00 cfs.
7. The point of diversion located in the NWSW (Lot 93 = Tract G), S28, T8S, R24E, the point of diversion located in the SESENE (Lot 96 = Tract D), S13, T8S, R24E and the point of diversion located in the SWSESW (Lot 96 = Tract D), S14, T8S, R25E are limited to a combined maximum diversion rate of 17.00 cfs.

**WATER RIGHT NO. 36-15194A**  
**As Modified by Transfer No. 77744**

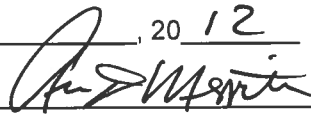
8. The point of diversion located in the SWSWNW (Lot 98 = Tract B), S30, T8S, R24E and the point of diversion located in the SWSWNW (Lot 99 = Tract A), S13, T8S, R24E and the point of diversion in the SESESW (Lot 90 = Tract K) S17, T8S, R24E and the point of diversion in the SESESW (Lot 95 = Tract E) S20, T8S, R24E and the point of diversion in the SWNWNW (Lot 99 = Tract A) S1, T9S, R21E and the point of diversion in the NWNENW (Lot 97 = Tract C) S 8, T9S, R22E are limited to a Combined maximum diversion rate of 45.0 cfs.
9. This right is limited to the irrigation of 13.7 acres within the place of use described above in a single irrigation season.
10. Rights 36-2080, 36-15127A, 36-15127B, 36-15192, 36-15193A, 36-15193B, 36-15194A, 36-15194B, 36-15195A, 36-15195B, 36-15196A and 36-15196B when combined shall not exceed a total diversion rate of 1,100 cfs, a total annual maximum diversion volume of 266,744.8 af, and the irrigation of 66,686.2 acres.
11. Use of water under this right will be regulated by a watermaster with responsibility for the distribution of water among appropriators within a water district. At the time of this approval, this water right is within State Water District No. 130.
12. The right holder shall maintain lockable controlling works of a type approved by the Department in a manner that will provide the watermaster suitable control of the diversion(s).
13. Prior to the diversion and use of water under Transfer approval 77744, the right holder shall install and maintain acceptable measuring device(s) at the authorized point(s) of diversion in accordance with Department specifications, or shall obtain an approved variance from the Department to determine the amount of water diverted from power records or to maintain an existing measuring device.
14. Upon specific notification of the Department, the right holder shall install and maintain data loggers to record water usage information at the authorized point(s) of diversion in accordance with Department specifications.
15. The beneficial use of the water represented hereby is for the landowners within the A & B Irrigation District pursuant to contract No. 14-06-100-2386, dated February 9, 1962 (as may be supplemented or amended) between the United States of America through the U.S. Bureau of Reclamation and the A & B Irrigation District for irrigation and other permitted purposes as authorized by the Act of September 30, 1950, CH. 1114, 64 STAT. 1083, of the North Side Pumping Division of the Minidoka Irrigation Project.
16. Right holder shall comply with the drilling permit requirements of Section 42-235, Idaho Code and applicable Well Construction Rules of the Department.
17. Relift drain pumps used within the boundary of the district for reuse of return flow.
18. The period of use for the irrigation described in this approval may be extended to a beginning date of 3/15 and an ending date of 11/15 provided that beneficial use of the water can be shown and other elements of the right are not exceeded. The use of water before 4/1 and after 10/31 is subordinate to all water rights having no subordinated early or late irrigation use and a priority date earlier than the SRBA partial decree date.

**WATER RIGHT NO. 36-15194A**  
**As Modified by Transfer No. 77744**

19. The right holder shall accomplish the change authorized by this transfer within one (1) year of the date of this approval.
20. Failure of the right holder to comply with the conditions of this transfer is cause for the Director to rescind approval of the transfer.
21. Pursuant to Section 42-1412(6), Idaho Code, this water right is subject to such general provisions necessary for the definition of the rights or for the efficient administration of water rights as may be determined by the Snake River Basin Adjudication court at a point in time no later than the entry of the final unified decree.

This water right is subject to all prior water rights and shall be administered in accordance with Idaho law and applicable rules of the Department of Water Resources.

Dated this 9<sup>th</sup> day of April, 2012

  
\_\_\_\_\_  
Southern Region Manager

**WATER RIGHT NO. 36-15194B**  
**As Modified by Transfer No. 77744**

In accordance with the approval of Transfer No. 77744, Water Right No. 36-15194B is now described as follows.

**Right Holder:** UNITED STATES OF AMERICA ACTING THROUGH  
BUREAU OF RECLAMATION  
REGIONAL DIRECTOR PN CODE-3100  
1150 N CURTIS RD STE 100  
BOISE ID 83706-1234

**Priority Date:** April 01, 1968

**Source:** GROUND WATER

<u>BENEFICIAL USE</u>	<u>From</u>	<u>To</u>	<u>Diversion Rate</u>	<u>Volume</u>
IRRIGATION	04/01	10/31	2.51 CFS	609.6 AF
			2.51 CFS	609.6 AF

**CONDITIONS OF APPROVAL**

1. The boundary encompassing the place of use for this water right is described with a digital boundary as authorized by Idaho law. The data comprising the digital boundary are stored in the electronic document management system of the Department and are incorporated into this approval by this reference. A map depicting the place of use is attached to this approval document to illustrate the place of use described by the digital boundary.
2. Place of use within the boundary of the A & B Irrigation District service area, pursuant to Section 43-323, Idaho Code.
3. The following convention is used to convert the government lots listed in the points of diversion to the official U.S. government tract designation: Lot 99 = Tract A, Lot 98 = Tract B, Lot 97 = Tract C, Lot 96 = Tract D, Lot 95 = Tract E, Lot 94 = Tract F, Lot 93 = Tract G, Lot 92 = Tract H, Lot 91 = Tract J, Lot 90 = Tract K, Lot 89 = Tract L, Lot 88 = Tract M, Lot 87 = Tract N, Lot 86 = Tract O, Lot 85 = Tract P, Lot 84 = Tract Q, Lot 83 = Tract R, Lot 82 = Tract S.
4. The point of diversion located in the NWNENW (Lot 94 = Tract F), S11, T9S, R22E is limited to a maximum diversion rate of 3.00 cfs.
5. The point of diversion located in the SENE (Lot 98 = Tract B), S9, T9S, R21E is limited to a maximum diversion rate of 6.00 cfs.
6. The point of diversion located in the NESESE (Lot 96 = Tract D), S15, T8S, R24E and the point of diversion located in the NWNENW (Lot 90 = Tract K), S26, T8S, R24E are limited to a combined maximum diversion rate of 10.00 cfs.
7. The point of diversion located in the NWSW (Lot 93 = Tract G), S28, T8S, R24E, the point of diversion located in the SESENE (Lot 96 = Tract D), S13, T8S, R24E and the point of diversion located in the SWSESW (Lot 96 = Tract D), S14, T8S, R25E are limited to a combined maximum diversion rate of 17.00 cfs.

**WATER RIGHT NO. 36-15194B**  
**As Modified by Transfer No. 77744**

8. The point of diversion located in the SWSWNW (Lot 98 = Tract B), S30, T8S, R24E and the point of diversion located in the SWSWNW (Lot 99 = Tract A), S13, T8S, R24E and the point of diversion in the SESESW (Lot 90 = Tract K) S17, T8S, R24E and the point of diversion in the SESESW (Lot 95 = Tract E) S20, T8S, R24E and the point of diversion in the SWNWNW (Lot 99 = Tract A) S1, T9S, R21E and the point of diversion in the NWNENW (Lot 97 = Tract C) S 8, T9S, R22E are limited to a Combined maximum diversion rate of 45.0 cfs.
9. This right is limited to the irrigation of 152.4 acres within the place of use described above in a single irrigation season.
10. Rights 36-2080, 36-15127A, 36-15127B, 36-15192, 36-15193A, 36-15193B, 36-15194A, 36-15194B, 36-15195A, 36-15195B, 36-15196A and 36-15196B when combined shall not exceed a total diversion rate of 1,100 cfs, a total annual maximum diversion volume of 266,744.8 af, and the irrigation of 66,686.2 acres.
11. Use of water under this right will be regulated by a watermaster with responsibility for the distribution of water among appropriators within a water district. At the time of this approval, this water right is within State Water District No. 130.
12. The right holder shall maintain lockable controlling works of a type approved by the Department in a manner that will provide the watermaster suitable control of the diversion(s).
13. Prior to the diversion and use of water under Transfer approval 77744, the right holder shall install and maintain acceptable measuring device(s) at the authorized point(s) of diversion in accordance with Department specifications, or shall obtain an approved variance from the Department to determine the amount of water diverted from power records or to maintain an existing measuring device.
14. Upon specific notification of the Department, the right holder shall install and maintain data loggers to record water usage information at the authorized point(s) of diversion in accordance with Department specifications.
15. The beneficial use of the water represented hereby is for the landowners within the A & B Irrigation District pursuant to contract No. 14-06-100-2386, dated February 9, 1962 (as may be supplemented or amended) between the United States of America through the U.S. Bureau of Reclamation and the A & B Irrigation District for irrigation and other permitted purposes as authorized by the Act of September 30, 1950, CH. 1114, 64 STAT. 1083, of the North Side Pumping Division of the Minidoka Irrigation Project.
16. Right holder shall comply with the drilling permit requirements of Section 42-235, Idaho Code and applicable Well Construction Rules of the Department.
17. Relift drain pumps used within the boundary of the district for reuse of return flow.
18. This right is based upon an enlargement of right No. 36-2080 pursuant to Section 42-1426, Idaho Code. This right is subordinate to all water rights with a priority date earlier than April 12, 1994, that are not decreed as enlargements pursuant to Section 42-1426, Idaho Code. As between water rights decreed as enlargements as pursuant to Section 42-1426, Idaho Code, the earlier priority right is the superior right.

**WATER RIGHT NO. 36-15194B**  
**As Modified by Transfer No. 77744**

19. The period of use for the irrigation described in this approval may be extended to a beginning date of 3/15 and an ending date of 11/15 provided that beneficial use of the water can be shown and other elements of the right are not exceeded. The use of water before 4/1 and after 10/31 is subordinate to all water rights having no subordinated early or late irrigation use and a priority date earlier than the SRBA partial decree date.
20. The right holder shall accomplish the change authorized by this transfer within one (1) year of the date of this approval.
21. Failure of the right holder to comply with the conditions of this transfer is cause for the Director to rescind approval of the transfer.
22. Pursuant to Section 42-1412(6), Idaho Code, this water right is subject to such general provisions necessary for the definition of the rights or for the efficient administration of water rights as may be determined by the Snake River Basin Adjudication court at a point in time no later than the entry of the final unified decree.

This water right is subject to all prior water rights and shall be administered in accordance with Idaho law and applicable rules of the Department of Water Resources.

Dated this 9<sup>th</sup> day of April, 2012

  
\_\_\_\_\_  
Southern Region Manager

**WATER RIGHT NO. 36-15195A**  
**As Modified by Transfer No. 77744**

In accordance with the approval of Transfer No. 77744, Water Right No. 36-15195A is now described as follows.

**Right Holder:** UNITED STATES OF AMERICA ACTING THROUGH  
BUREAU OF RECLAMATION  
REGIONAL DIRECTOR PN CODE-3100  
1150 N CURTIS RD STE 100  
BOISE ID 83706-1234

**Priority Date:** April 01, 1962

**Source:** GROUND WATER

<u>BENEFICIAL USE</u>	<u>From</u>	<u>To</u>	<u>Diversion Rate</u>	<u>Volume</u>
IRRIGATION	04/01	to 10/31	0.87 CFS	210.0 AF
			0.87 CFS	210.0 AF

**CONDITIONS OF APPROVAL**

1. The boundary encompassing the place of use for this water right is described with a digital boundary as authorized by Idaho law. The data comprising the digital boundary are stored in the electronic document management system of the Department and are incorporated into this approval by this reference. A map depicting the place of use is attached to this approval document to illustrate the place of use described by the digital boundary.
2. Place of use within the boundary of the A & B Irrigation District service area, pursuant to Section 43-323, Idaho Code.
3. The following convention is used to convert the government lots listed in the points of diversion to the official U.S. government tract designation: Lot 99 = Tract A, Lot 98 = Tract B, Lot 97 = Tract C, Lot 96 = Tract D, Lot 95 = Tract E, Lot 94 = Tract F, Lot 93 = Tract G, Lot 92 = Tract H, Lot 91 = Tract J, Lot 90 = Tract K, Lot 89 = Tract L, Lot 88 = Tract M, Lot 87 = Tract N, Lot 86 = Tract O, Lot 85 = Tract P, Lot 84 = Tract Q, Lot 83 = Tract R, Lot 82 = Tract S.
4. The point of diversion located in the NWNENW (Lot 94 = Tract F), S11, T9S, R22E is limited to a maximum diversion rate of 3.00 cfs.
5. The point of diversion located in the SENE (Lot 98 = Tract B), S9, T9S, R21E is limited to a maximum diversion rate of 6.00 cfs.
6. The point of diversion located in the NESESE (Lot 96 = Tract D), S15, T8S, R24E and the point of diversion located in the NWNENW (Lot 90 = Tract K), S26, T8S, R24E are limited to a combined maximum diversion rate of 10.00 cfs.
7. The point of diversion located in the NWSW (Lot 93 = Tract G), S28, T8S, R24E, the point of diversion located in the SESENE (Lot 96 = Tract D), S13, T8S, R24E and the point of diversion located in the SWSESW (Lot 96 = Tract D), S14, T8S, R25E are limited to a combined maximum diversion rate of 17.00 cfs.

**WATER RIGHT NO. 36-15195A**  
**As Modified by Transfer No. 77744**

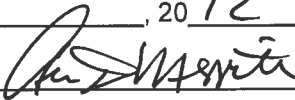
8. The point of diversion located in the SWSWNW (Lot 98 = Tract B), S30, T8S, R24E and the point of diversion located in the SWSWNW (Lot 99 = Tract A), S13, T8S, R24E and the point of diversion in the SESESW (Lot 90 = Tract K) S17, T8S, R24E and the point of diversion in the SESESW (Lot 95 = Tract E) S20, T8S, R24E and the point of diversion in the SWNWNW (Lot 99 = Tract A) S1, T9S, R21E and the point of diversion in the NWNENW (Lot 97 = Tract C) S 8, T9S, R22E are limited to a Combined maximum diversion rate of 45.0 cfs.
9. This right is limited to the irrigation of 52.5 acres within the place of use described above in a single irrigation season.
10. Rights 36-2080, 36-15127A, 36-15127B, 36-15192, 36-15193A, 36-15193B, 36-15194A, 36-15194B, 36-15195A, 36-15195B, 36-15196A and 36-15196B when combined shall not exceed a total diversion rate of 1,100 cfs, a total annual maximum diversion volume of 266,744.8 af, and the irrigation of 66,686.2 acres.
11. Use of water under this right will be regulated by a watermaster with responsibility for the distribution of water among appropriators within a water district. At the time of this approval, this water right is within State Water District No. 130.
12. The right holder shall maintain lockable controlling works of a type approved by the Department in a manner that will provide the watermaster suitable control of the diversion(s).
13. Prior to the diversion and use of water under Transfer approval 77744, the right holder shall install and maintain acceptable measuring device(s) at the authorized point(s) of diversion in accordance with Department specifications, or shall obtain an approved variance from the Department to determine the amount of water diverted from power records or to maintain an existing measuring device.
14. Upon specific notification of the Department, the right holder shall install and maintain data loggers to record water usage information at the authorized point(s) of diversion in accordance with Department specifications.
15. The beneficial use of the water represented hereby is for the landowners within the A & B Irrigation District pursuant to contract No. 14-06-100-2386, dated February 9, 1962 (as may be supplemented or amended) between the United States of America through the U.S. Bureau of Reclamation and the A & B Irrigation District for irrigation and other permitted purposes as authorized by the Act of September 30, 1950, CH. 1114, 64 STAT. 1083, of the North Side Pumping Division of the Minidoka Irrigation Project.
16. Right holder shall comply with the drilling permit requirements of Section 42-235, Idaho Code and applicable Well Construction Rules of the Department.
17. Relift drain pumps used within the boundary of the district for reuse of return flow.
18. The period of use for the irrigation described in this approval may be extended to a beginning date of 3/15 and an ending date of 11/15 provided that beneficial use of the water can be shown and other elements of the right are not exceeded. The use of water before 4/1 and after 10/31 is subordinate to all water rights having no subordinated early or late irrigation use and a priority date earlier than the SRBA partial decree date.

**WATER RIGHT NO. 36-15195A**  
**As Modified by Transfer No. 77744**

19. The right holder shall accomplish the change authorized by this transfer within one (1) year of the date of this approval.
20. Failure of the right holder to comply with the conditions of this transfer is cause for the Director to rescind approval of the transfer.
21. Pursuant to Section 42-1412(6), Idaho Code, this water right is subject to such general provisions necessary for the definition of the rights or for the efficient administration of water rights as may be determined by the Snake River Basin Adjudication court at a point in time no later than the entry of the final unified decree.

This water right is subject to all prior water rights and shall be administered in accordance with Idaho law and applicable rules of the Department of Water Resources.

Dated this 9<sup>th</sup> day of April, 2012

  
\_\_\_\_\_  
Southern Region Manager

**WATER RIGHT NO. 36-15195B**  
**As Modified by Transfer No. 77744**

In accordance with the approval of Transfer No. 77744, Water Right No. 36-15195B is now described as follows.

**Right Holder:** UNITED STATES OF AMERICA ACTING THROUGH  
BUREAU OF RECLAMATION  
REGIONAL DIRECTOR PN CODE-3100  
1150 N CURTIS RD STE 100  
BOISE ID 83706-1234

**Priority Date:** April 01, 1978

**Source:** GROUND WATER

<u>BENEFICIAL USE</u>	<u>From</u>	<u>To</u>	<u>Diversion Rate</u>	<u>Volume</u>
IRRIGATION	04/01	10/31	2.24 CFS	542.4 AF
			2.24 CFS	542.4 AF

**CONDITIONS OF APPROVAL**

1. The boundary encompassing the place of use for this water right is described with a digital boundary as authorized by Idaho law. The data comprising the digital boundary are stored in the electronic document management system of the Department and are incorporated into this approval by this reference. A map depicting the place of use is attached to this approval document to illustrate the place of use described by the digital boundary.
2. Place of use within the boundary of the A & B Irrigation District service area, pursuant to Section 43-323, Idaho Code.
3. The following convention is used to convert the government lots listed in the points of diversion to the official U.S. government tract designation: Lot 99 = Tract A, Lot 98 = Tract B, Lot 97 = Tract C, Lot 96 = Tract D, Lot 95 = Tract E, Lot 94 = Tract F, Lot 93 = Tract G, Lot 92 = Tract H, Lot 91 = Tract J, Lot 90 = Tract K, Lot 89 = Tract L, Lot 88 = Tract M, Lot 87 = Tract N, Lot 86 = Tract O, Lot 85 = Tract P, Lot 84 = Tract Q, Lot 83 = Tract R, Lot 82 = Tract S.
4. The point of diversion located in the NWNENW (Lot 94 = Tract F), S11, T9S, R22E is limited to a maximum diversion rate of 3.00 cfs.
5. The point of diversion located in the SENE (Lot 98 = Tract B), S9, T9S, R21E is limited to a maximum diversion rate of 6.00 cfs.
6. The point of diversion located in the NESESE (Lot 96 = Tract D), S15, T8S, R24E and the point of diversion located in the NWNENW (Lot 90 = Tract K), S26, T8S, R24E are limited to a combined maximum diversion rate of 10.00 cfs.
7. The point of diversion located in the NWSW (Lot 93 = Tract G), S28, T8S, R24E, the point of diversion located in the SESENE (Lot 96 = Tract D), S13, T8S, R24E and the point of diversion located in the SWSESW (Lot 96 = Tract D), S14, T8S, R25E are limited to a combined maximum diversion rate of 17.00 cfs.

**WATER RIGHT NO. 36-15195B**  
**As Modified by Transfer No. 77744**

8. The point of diversion located in the SWSWNW (Lot 98 = Tract B), S30, T8S, R24E and the point of diversion located in the SWSWNW (Lot 99 = Tract A), S13, T8S, R24E and the point of diversion in the SESESW (Lot 90 = Tract K) S17, T8S, R24E and the point of diversion in the SESESW (Lot 95 = Tract E) S20, T8S, R24E and the point of diversion in the SWNWNW (Lot 99 = Tract A) S1, T9S, R21E and the point of diversion in the NWNENW (Lot 97 = Tract C) S 8, T9S, R22E are limited to a Combined maximum diversion rate of 45.0 cfs.
9. This right is limited to the irrigation of 135.6 acres within the place of use described above in a single irrigation season.
10. Rights 36-2080, 36-15127A, 36-15127B, 36-15192, 36-15193A, 36-15193B, 36-15194A, 36-15194B, 36-15195A, 36-15195B, 36-15196A and 36-15196B when combined shall not exceed a total diversion rate of 1,100 cfs, a total annual maximum diversion volume of 266,744.8 af, and the irrigation of 66,686.2 acres.
11. Use of water under this right will be regulated by a watermaster with responsibility for the distribution of water among appropriators within a water district. At the time of this approval, this water right is within State Water District No. 130.
12. The right holder shall maintain lockable controlling works of a type approved by the Department in a manner that will provide the watermaster suitable control of the diversion(s).
13. Prior to the diversion and use of water under Transfer approval 77744, the right holder shall install and maintain acceptable measuring device(s) at the authorized point(s) of diversion in accordance with Department specifications, or shall obtain an approved variance from the Department to determine the amount of water diverted from power records or to maintain an existing measuring device.
14. Upon specific notification of the Department, the right holder shall install and maintain data loggers to record water usage information at the authorized point(s) of diversion in accordance with Department specifications.
15. The beneficial use of the water represented hereby is for the landowners within the A & B Irrigation District pursuant to contract No. 14-06-100-2386, dated February 9, 1962 (as may be supplemented or amended) between the United States of America through the U.S. Bureau of Reclamation and the A & B Irrigation District for irrigation and other permitted purposes as authorized by the Act of September 30, 1950, CH. 1114, 64 STAT. 1083, of the North Side Pumping Division of the Minidoka Irrigation Project.
16. Right holder shall comply with the drilling permit requirements of Section 42-235, Idaho Code and applicable Well Construction Rules of the Department.
17. Relift drain pumps used within the boundary of the district for reuse of return flow.
18. The period of use for the irrigation described in this approval may be extended to a beginning date of 3/15 and an ending date of 11/15 provided that beneficial use of the water can be shown and other elements of the right are not exceeded. The use of water before 4/1 and after 10/31 is subordinate to all water rights having no subordinated early or late irrigation use and a priority date earlier than the SRBA partial decree date.

**WATER RIGHT NO. 36-15195B**  
**As Modified by Transfer No. 77744**

19. This right is based upon an enlargement of right No. 36-2080 pursuant to Section 42-1426, Idaho Code. This right is subordinate to all water rights with a priority date earlier than April 12, 1994, that are not decreed as enlargements pursuant to Section 42-1426, Idaho Code. As between water rights decreed as enlargements as pursuant to Section 42-1426, Idaho Code, the earlier priority right is the superior right.
20. The right holder shall accomplish the change authorized by this transfer within one (1) year of the date of this approval.
21. Failure of the right holder to comply with the conditions of this transfer is cause for the Director to rescind approval of the transfer.
22. Pursuant to Section 42-1412(6), Idaho Code, this water right is subject to such general provisions necessary for the definition of the rights or for the efficient administration of water rights as may be determined by the Snake River Basin Adjudication court at a point in time no later than the entry of the final unified decree.

This water right is subject to all prior water rights and shall be administered in accordance with Idaho law and applicable rules of the Department of Water Resources.

Dated this 9<sup>th</sup> day of April, 2012

  
\_\_\_\_\_  
Southern Region Manager

**WATER RIGHT NO. 36-15196A**  
**As Modified by Transfer No. 77744**

In accordance with the approval of Transfer No. 77744, Water Right No. 36-15196A is now described as follows.

**Right Holder:** UNITED STATES OF AMERICA ACTING THROUGH  
BUREAU OF RECLAMATION  
REGIONAL DIRECTOR PN CODE-3100  
1150 N CURTIS RD STE 100  
BOISE ID 83706-1234

**Priority Date:** April 01, 1962

**Source:** GROUND WATER

<u>BENEFICIAL USE</u>	<u>From</u>	<u>To</u>	<u>Diversion Rate</u>	<u>Volume</u>
IRRIGATION	04/01	to 10/31	0.29 CFS	69.6 AF
			0.29 CFS	69.6 AF

**CONDITIONS OF APPROVAL**

1. The boundary encompassing the place of use for this water right is described with a digital boundary as authorized by Idaho law. The data comprising the digital boundary are stored in the electronic document management system of the Department and are incorporated into this approval by this reference. A map depicting the place of use is attached to this approval document to illustrate the place of use described by the digital boundary.
2. Place of use within the boundary of the A & B Irrigation District service area, pursuant to Section 43-323, Idaho Code.
3. The following convention is used to convert the government lots listed in the points of diversion to the official U.S. government tract designation: Lot 99 = Tract A, Lot 98 = Tract B, Lot 97 = Tract C, Lot 96 = Tract D, Lot 95 = Tract E, Lot 94 = Tract F, Lot 93 = Tract G, Lot 92 = Tract H, Lot 91 = Tract J, Lot 90 = Tract K, Lot 89 = Tract L, Lot 88 = Tract M, Lot 87 = Tract N, Lot 86 = Tract O, Lot 85 = Tract P, Lot 84 = Tract Q, Lot 83 = Tract R, Lot 82 = Tract S.
4. The point of diversion located in the NWNENW (Lot 94 = Tract F), S11, T9S, R22E is limited to a maximum diversion rate of 3.00 cfs.
5. The point of diversion located in the SENE (Lot 98 = Tract B), S9, T9S, R21E is limited to a maximum diversion rate of 6.00 cfs.
6. The point of diversion located in the NESESE (Lot 96 = Tract D), S15, T8S, R24E and the point of diversion located in the NWNENW (Lot 90 = Tract K), S26, T8S, R24E are limited to a combined maximum diversion rate of 10.00 cfs.
7. The point of diversion located in the NWSW (Lot 93 = Tract G), S28, T8S, R24E, the point of diversion located in the SESENE (Lot 96 = Tract D), S13, T8S, R24E and the point of diversion located in the SWSESW (Lot 96 = Tract D), S14, T8S, R25E are limited to a combined maximum diversion rate of 17.00 cfs.

**WATER RIGHT NO. 36-15196A**  
**As Modified by Transfer No. 77744**

8. The point of diversion located in the SWSWNW (Lot 98 = Tract B), S30, T8S, R24E and the point of diversion located in the SWSWNW (Lot 99 = Tract A), S13, T8S, R24E and the point of diversion in the SESESW (Lot 90 = Tract K) S17, T8S, R24E and the point of diversion in the SESESW (Lot 95 = Tract E) S20, T8S, R24E and the point of diversion in the SWNWNW (Lot 99 = Tract A) S1, T9S, R21E and the point of diversion in the NWNENW (Lot 97 = Tract C) S 8, T9S, R22E are limited to a Combined maximum diversion rate of 45.0 cfs.
9. This right is limited to the irrigation of 17.4 acres within the place of use described above in a single irrigation season.
10. Rights 36-2080, 36-15127A, 36-15127B, 36-15192, 36-15193A, 36-15193B, 36-15194A, 36-15194B, 36-15195A, 36-15195B, 36-15196A and 36-15196B when combined shall not exceed a total diversion rate of 1,100 cfs, a total annual maximum diversion volume of 266,744.8 af, and the irrigation of 66,686.2 acres.
11. Use of water under this right will be regulated by a watermaster with responsibility for the distribution of water among appropriators within a water district. At the time of this approval, this water right is within State Water District No. 130.
12. The right holder shall maintain lockable controlling works of a type approved by the Department in a manner that will provide the watermaster suitable control of the diversion(s).
13. Prior to the diversion and use of water under Transfer approval 77744, the right holder shall install and maintain acceptable measuring device(s) at the authorized point(s) of diversion in accordance with Department specifications, or shall obtain an approved variance from the Department to determine the amount of water diverted from power records or to maintain an existing measuring device.
14. Upon specific notification of the Department, the right holder shall install and maintain data loggers to record water usage information at the authorized point(s) of diversion in accordance with Department specifications.
15. The beneficial use of the water represented hereby is for the landowners within the A & B Irrigation District pursuant to contract No. 14-06-100-2386, dated February 9, 1962 (as may be supplemented or amended) between the United States of America through the U.S. Bureau of Reclamation and the A & B Irrigation District for irrigation and other permitted purposes as authorized by the Act of September 30, 1950, CH. 1114, 64 STAT. 1083, of the North Side Pumping Division of the Minidoka Irrigation Project.
16. Right holder shall comply with the drilling permit requirements of Section 42-235, Idaho Code and applicable Well Construction Rules of the Department.
17. Relift drain pumps used within the boundary of the district for reuse of return flow.
18. The period of use for the irrigation described in this approval may be extended to a beginning date of 3/15 and an ending date of 11/15 provided that beneficial use of the water can be shown and other elements of the right are not exceeded. The use of water before 4/1 and after 10/31 is subordinate to all water rights having no subordinated early or late irrigation use and a priority date earlier than the SRBA partial decree date.

**WATER RIGHT NO. 36-15196A**  
**As Modified by Transfer No. 77744**

19. The right holder shall accomplish the change authorized by this transfer within one (1) year of the date of this approval.
20. Failure of the right holder to comply with the conditions of this transfer is cause for the Director to rescind approval of the transfer.
21. Pursuant to Section 42-1412(6), Idaho Code, this water right is subject to such general provisions necessary for the definition of the rights or for the efficient administration of water rights as may be determined by the Snake River Basin Adjudication court at a point in time no later than the entry of the final unified decree.

This water right is subject to all prior water rights and shall be administered in accordance with Idaho law and applicable rules of the Department of Water Resources.

Dated this 9<sup>th</sup> day of April, 2012

  
\_\_\_\_\_  
Southern Region Manager

**WATER RIGHT NO. 36-15196B  
As Modified by Transfer No. 77744**

In accordance with the approval of Transfer No. 77744, Water Right No. 36-15196B is now described as follows.

**Right Holder:** UNITED STATES OF AMERICA ACTING THROUGH  
BUREAU OF RECLAMATION  
REGIONAL DIRECTOR PN CODE-3100  
1150 N CURTIS RD STE 100  
BOISE ID 83706-1234

**Priority Date:** April 01, 1981

**Source:** GROUND WATER

<u>BENEFICIAL USE</u>	<u>From</u>	<u>To</u>	<u>Diversion Rate</u>	<u>Volume</u>
IRRIGATION	04/01	to 10/31	0.08 CFS	18.8 AF
			0.08 CFS	18.8 AF

**CONDITIONS OF APPROVAL**

1. The boundary encompassing the place of use for this water right is described with a digital boundary as authorized by Idaho law. The data comprising the digital boundary are stored in the electronic document management system of the Department and are incorporated into this approval by this reference. A map depicting the place of use is attached to this approval document to illustrate the place of use described by the digital boundary.
2. Place of use within the boundary of the A & B Irrigation District service area, pursuant to Section 43-323, Idaho Code.
3. The following convention is used to convert the government lots listed in the points of diversion to the official U.S. government tract designation: Lot 99 = Tract A, Lot 98 = Tract B, Lot 97 = Tract C, Lot 96 = Tract D, Lot 95 = Tract E, Lot 94 = Tract F, Lot 93 = Tract G, Lot 92 = Tract H, Lot 91 = Tract J, Lot 90 = Tract K, Lot 89 = Tract L, Lot 88 = Tract M, Lot 87 = Tract N, Lot 86 = Tract O, Lot 85 = Tract P, Lot 84 = Tract Q, Lot 83 = Tract R, Lot 82 = Tract S.
4. The point of diversion located in the NWNENW (Lot 94 = Tract F), S11, T9S, R22E is limited to a maximum diversion rate of 3.00 cfs.
5. The point of diversion located in the SENE (Lot 98 = Tract B), S9, T9S, R21E is limited to a maximum diversion rate of 6.00 cfs.
6. The point of diversion located in the NESESE (Lot 96 = Tract D), S15, T8S, R24E and the point of diversion located in the NWNENW (Lot 90 = Tract K), S26, T8S, R24E are limited to a combined maximum diversion rate of 10.00 cfs.
7. The point of diversion located in the NWSW (Lot 93 = Tract G), S28, T8S, R24E, the point of diversion located in the SESENE (Lot 96 = Tract D), S13, T8S, R24E and the point of diversion located in the SWSESW (Lot 96 = Tract D), S14, T8S, R25E are limited to a combined maximum diversion rate of 17.00 cfs.

**WATER RIGHT NO. 36-15196B**  
**As Modified by Transfer No. 77744**

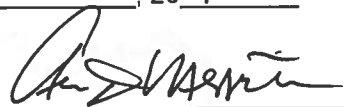
8. The point of diversion located in the SWSWNW (Lot 98 = Tract B), S30, T8S, R24E and the point of diversion located in the SWSWNW (Lot 99 = Tract A), S13, T8S, R24E and the point of diversion in the SESESW (Lot 90 = Tract K) S17, T8S, R24E and the point of diversion in the SESESW (Lot 95 = Tract E) S20, T8S, R24E and the point of diversion in the SWNWNW (Lot 99 = Tract A) S1, T9S, R21E and the point of diversion in the NWNENW (Lot 97 = Tract C) S 8, T9S, R22E are limited to a Combined maximum diversion rate of 45.0 cfs.
9. This right is limited to the irrigation of 4.7 acres within the place of use described above in a single irrigation season.
10. Rights 36-2080, 36-15127A, 36-15127B, 36-15192, 36-15193A, 36-15193B, 36-15194A, 36-15194B, 36-15195A, 36-15195B, 36-15196A and 36-15196B when combined shall not exceed a total diversion rate of 1,100 cfs, a total annual maximum diversion volume of 266,744.8 af, and the irrigation of 66,686.2 acres.
11. Use of water under this right will be regulated by a watermaster with responsibility for the distribution of water among appropriators within a water district. At the time of this approval, this water right is within State Water District No. 130.
12. The right holder shall maintain lockable controlling works of a type approved by the Department in a manner that will provide the watermaster suitable control of the diversion(s).
13. Prior to the diversion and use of water under Transfer approval 77744, the right holder shall install and maintain acceptable measuring device(s) at the authorized point(s) of diversion in accordance with Department specifications, or shall obtain an approved variance from the Department to determine the amount of water diverted from power records or to maintain an existing measuring device.
14. Upon specific notification of the Department, the right holder shall install and maintain data loggers to record water usage information at the authorized point(s) of diversion in accordance with Department specifications.
15. The beneficial use of the water represented hereby is for the landowners within the A & B Irrigation District pursuant to contract No. 14-06-100-2386, dated February 9, 1962 (as may be supplemented or amended) between the United States of America through the U.S. Bureau of Reclamation and the A & B Irrigation District for irrigation and other permitted purposes as authorized by the Act of September 30, 1950, CH. 1114, 64 STAT. 1083, of the North Side Pumping Division of the Minidoka Irrigation Project.
16. Right holder shall comply with the drilling permit requirements of Section 42-235, Idaho Code and applicable Well Construction Rules of the Department.
17. Relift drain pumps used within the boundary of the district for reuse of return flow.
18. The period of use for the irrigation described in this approval may be extended to a beginning date of 3/15 and an ending date of 11/15 provided that beneficial use of the water can be shown and other elements of the right are not exceeded. The use of water before 4/1 and after 10/31 is subordinate to all water rights having no subordinated early or late irrigation use and a priority date earlier than the SRBA partial decree date.

**WATER RIGHT NO. 36-15196B**  
**As Modified by Transfer No. 77744**

19. This right is based upon an enlargement of right No. 36-2080 pursuant to Section 42-1426, Idaho Code. This right is subordinate to all water rights with a priority date earlier than April 12, 1994, that are not decreed as enlargements pursuant to Section 42-1426, Idaho Code. As between water rights decreed as enlargements as pursuant to Section 42-1426, Idaho Code, the earlier priority right is the superior right.
20. The right holder shall accomplish the change authorized by this transfer within one (1) year of the date of this approval.
21. Failure of the right holder to comply with the conditions of this transfer is cause for the Director to rescind approval of the transfer.
22. Pursuant to Section 42-1412(6), Idaho Code, this water right is subject to such general provisions necessary for the definition of the rights or for the efficient administration of water rights as may be determined by the Snake River Basin Adjudication court at a point in time no later than the entry of the final unified decree.

This water right is subject to all prior water rights and shall be administered in accordance with Idaho law and applicable rules of the Department of Water Resources.

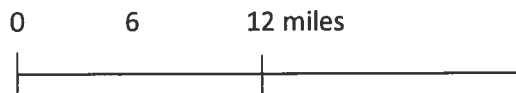
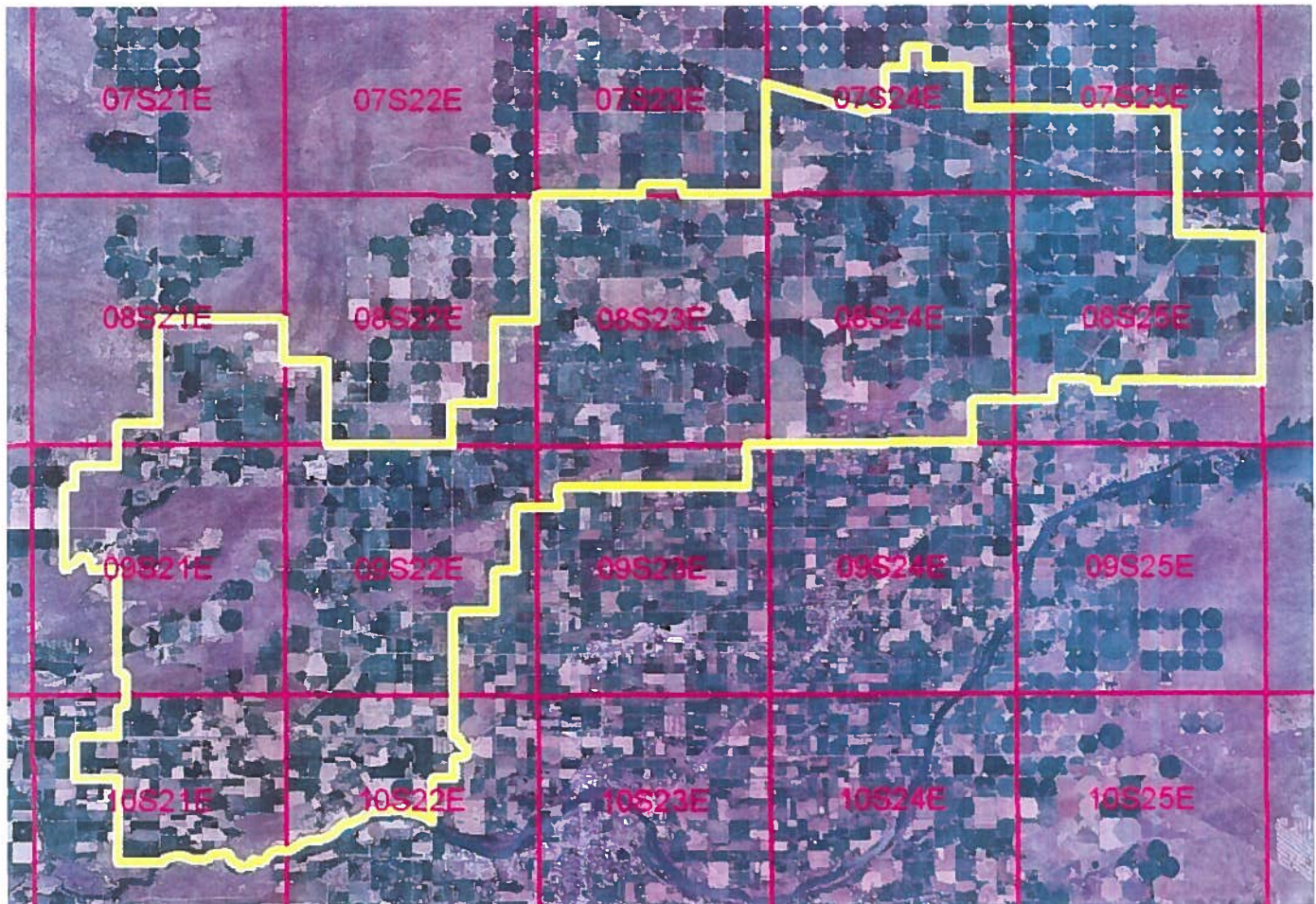
Dated this 9<sup>th</sup> day of April, 20 12

  
\_\_\_\_\_  
Southern Region Manager

STATE OF IDAHO  
DEPARTMENT OF WATER RESOURCES  
TRANSFER OF WATER RIGHT  
TRANSFER NO. 77744

Water Service Area Boundary for the A & B Irrigation District

Rights: 36-2080, 36-15127A, 36-15127B, 36-15192, 36-15193A, 36-15193B, 36-15194A, 36-15194B, 36-15195A, 36-15195B, 36-15196A and 36-15196B



**Legend**

-  Water Service Area Boundary
-  Townships