

MEMORANDUM

Date: August 19, 2013
To: Water Right File 63-32423 (JMM Dry Creek LLC)
From: Michele Edl
Re: permit status/monitoring plan

I have reviewed a submittal from SPF Engineering dated August 9, 2013 and titled Report of Water Level Monitoring Results for Dry Creek Ranch Aquifer Monitoring Plan. The document is intended to provide information related to a water rights agreement and compliance with the conditions of above permit.

A review of the file contents indicates that the Department should have received previous reports. The scanned images show that a report dated 2011 was received at Western Region office, but the hard copy is not located in the water right file. And if the 2012 report was received, it was neither scanned nor made a part of the water right file.

The file also indicated that if the development of the project is proceeding, then the Department should have received reports of the extent and type of water use. I have found no such reports. It is possible that development has languished in the years since the permit was approved. The most recent aerial photography available to me is from 2011 and does not show significant new development. An independent confirmation of the status of the project works would be valuable for the file.

Based the available information, it is not possible to determine if the water right is being developed in compliance with the permit.

I have requested information from Mr. Erik Boe related to the monitoring plan and to the other reports required by this permit. Any information related to the ground water monitoring will be shared with Dennis Owsley who is responsible for monitoring in this area.



AUG 12 2013

WATER RESOURCES
WESTERN REGION

August 9, 2013

Leslie Nona
Chairperson
Dry Creek Rural Neighborhood Association
6411 West Dry Creek Road
Boise, ID 83714

Subject: Report of Water Level Monitoring Results from Dry Creek Ranch Aquifer Monitoring Plan

Dear Leslie,

This letter summarizes the status of the Dry Creek Ranch Aquifer Monitoring Plan (Plan) dated April 2008. The Plan was implemented by JMM Dry Creek (JMM) as part of a Water Rights Agreement (Agreement) between the Dry Creek Rural Neighborhood Association (DCRNA) and JMM Dry Creek (JMM). The Agreement, with an effective date of January 14, 2009, was established to resolve the DCRNA protest of JMM's Application for Permit 63-32423 and to avoid a possible protest of JMM's Application for Transfer 73817.

The Plan originally included six wells located on the Dry Creek Ranch property and four off-site wells. The on-site wells are Well 9, Payne Well, Big Pump Well, Hot Well, Stockwater Well, and the Pasture Well. The four off-site wells are the Beliveau Well, Thompson Well, Graves Well, and the Dater Well. The locations of these wells are shown on the attached Figure 1.

Monitoring of these wells began in June 2007. Measurements were taken every two months through 2008, and then every 6 months thereafter. The most recent set of measurements were taken on April 29, 2013. Since April 2010, artesian pressure has not been measured from the Pasture Well because the well head is leaking, preventing an accurate measurement of pressure. The well head would have to be repaired in order to continue to be used as a monitoring location.

The Agreement also required adding six off-site DCRNA wells to the Plan. In April 2009, three DCRNA wells were added to the monitoring program: the Podolan Well, Johnston Well, and the Rishel Well. These wells are shown on Figure 1. These wells were measured every two months through April 2010, then every 6 months thereafter. The most recent set of measurements were taken on April 29, 2013.

Three additional DCRNA wells were added to the program in April 2010: the Golis Well, Chapin Well, and the Hull Well. These wells are shown on Figure 1. Water levels from these three wells were measured every two months for a year, then every

6 months thereafter. The most recent set of measurements were taken on April 29, 2013.

During Fall 2012 monitoring, our electric line well sounder became snagged somewhere along the drop pipe/power cable in the Graves Well. Any future monitoring at this well will require installation of a well sounding tube. Connie Graves declined our offer to install a well sounding tube free of charge. As a result, we are removing her name from the well monitoring list. If you can identify a new domestic well for addition to the monitoring program, and obtain agreements from the homeowner, we will include them in the next monitoring period.

Measurements from the eight original wells (excluding the Pasture Well and Graves Well) plus the six off-site DCRNA wells will continue to be taken twice a year (April and October) until termination of the program, according to the Plan.

Water level measurements collected to date from the 16 monitoring wells currently in the Plan are presented in the attached Table 1. These measurements are presented graphically in the attached Figure 2.

Please contact me with any questions you may have regarding the information contained in this letter.

Sincerely,



Erik Boe, E.I.T.
Associate Engineer

Cc: Randy Black, JMM Dry Creek, LLC
Jo Beeman, Beeman & Associates
John Westra, Idaho Department of Water Resources
Marian Shaw
John Johnston
Dale Podolan
Michael Rishel
Philip Dater
H. Platt Thompson
Kathryn Beliveau
Connie Graves
Tom Golis
Gayle Chapin
Shannon Hull
SPF File #434.0080

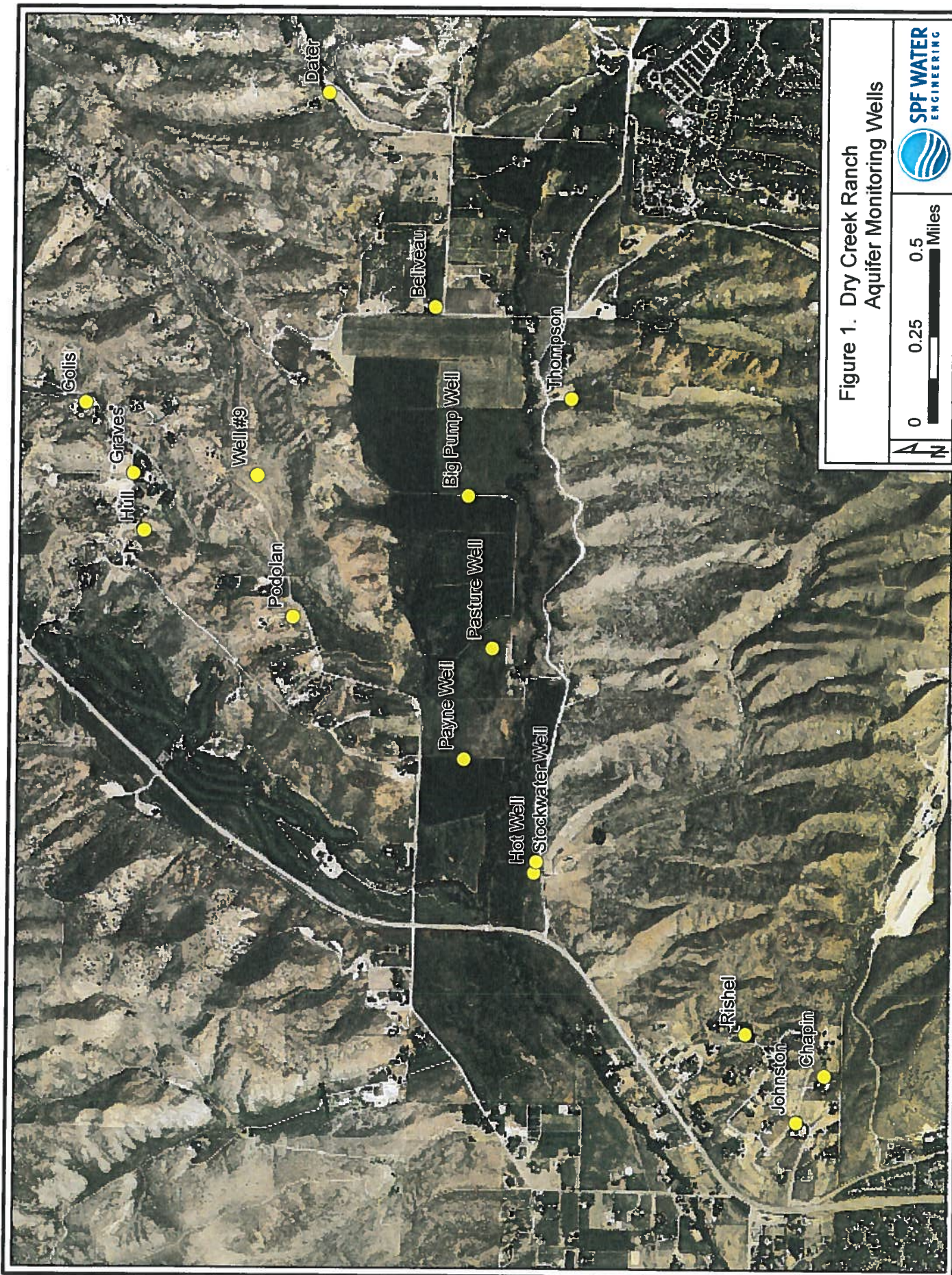
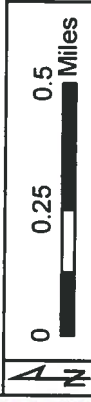


Figure 1. Dry Creek Ranch
Aquifer Monitoring Wells



RECEIVED

AUG 12 2013

WATER RESOURCES
WESTERN REGION

Table 1. Dry Creek Water Level Monitoring Results

Date	#9 (ft. DTW)	Payne (psi)	Big Pump Well (ft. DTW)	Hot Well (psi)	Stockwater (ft. DTW)	Pasture (psi)	Bellveau (ft. DTW)	Thompson (ft. DTW)	Graves (ft. DTW)	Dater (ft. DTW)	Johnston (ft. DTW)	Rishel (ft. DTW)	Podolan (ft. DTW)	ChapIn (ft. DTW)	Hull (ft. DTW)	Golls (ft. DTW)
6/8/07		4.0	31.37	10.0	19.10	1.0	48.43	36.53	154.28	48.02						
7/50/07	72.25	4.0	35.88	8.5	19.58	2.0	50.53	40.74	153.25	50.35						
10/12/07	71.95	4.0	27.87	10.0	19.26	3.0	52.98	39.72	153.72	47.82						
12/13/07	73.55	9.3	28.92	11.3	20.37	3.0	52.13	38.23	155.18	51.20						
2/13/08	72.20	5.0	27.35	11.0	20.54	3.0	51.75	39.23	154.92	49.70						
4/7/08	73.40	4.0	24.52	11.0	21.60	4.0	50.02	38.70	154.55	45.15						
6/24/08	73.16	4.0	31.97	11.0	19.32	2.5	48.76	36.95	154.10	48.42						
8/6/08	73.02	5.0	31.75	11.0	19.78	3.0	49.10	38.65	154.19	49.79						
9/8/08			28.3													
9/19/08			28.2													
10/2/08	71.72	4.0	26.92	10.0	19.12	3.0	52.54	39.52	154.01	47.63						
12/3/08	73.32	9.0	28.72	10.0	20.31	3.0	52.13	38.17	154.98	51.00						
4/27/09	72.63	3.5	24.58	8.6	19.10	1.0	50.53	36.68	155.09	45.56	85.76	134.33	73.52			
6/26/09											91.79	157.94	74.76			
8/31/09											99.32	152.10	75.89			
10/20/09	74.19	5.0	26.65	7.8	18.99	2.5	53.03	39.65	155.72	47.82	83.97	133.52	75.55			
12/29/09											80.22	131.17	74.82			
2/26/10											80.4	131.64	73.76			
4/19/10	72.15	6.0	23.64	8.7	17.69	(1)	50.05	35.76	160.94	45.22	83.73	130.45	72.60	65.19	131.72	254.71
6/30/10														85.25	148.08	255.51
8/31/10														86.44	143.90	259.57
10/26/10	73.58	4.5	26.41	8.9	19.22	(1)	51.84	38.88	156.01	47.37	88.72	134.75	74.66	75.94	135.87	255.20
12/30/10														69.18	133.82	256.17
2/28/11														68.29	132.31	255.70
4/27/11	70.51	6.7	21.66	9.5	17.19	(1)	47.78	34.60	148.82	34.87	77.96	132.38	69.53	68.81	131.90	254.88
10/21/11	71.04	7.2	23.26	11.4	18.89	(1)	49.20	35.48	154.48	46.60	85.66	132.32	71.37	74.47	137.61	256.63
4/24/12	68.71	9.0	20.55	13.5	18.60	(1)	46.47	32.98	168.18	37.55	77.65	130.12	68.70	77.83	135.70	252.19
10/23/2012	71.88	5.0	24.6	8.0	18.49	(1)	50.08	36.76	(5)	47.20 (2)	87.37	132.63	72.32	83.12	133.49	250.83
4/29/2013	69.04	9.0	22.58	11.5	12.02	(1)	48.92	38.57 (2)	(3)	45.50 (2)	81.36	134.35	69.93	(4)	136.14	252.06

(1) no measurement, most of artesian flow escaping from well head
 (2) Pumping water level; Pump on during measurement
 (3) Sounder snagged in well, unable to measure water level
 (4) No measurement; Pump on, unable to measure PWL due to constriction at approximately 220ft

