

63-32423



June 20, 2016

Leslie Nona
Chairperson
Dry Creek Rural Neighborhood Association
6411 West Dry Creek Road
Boise, ID 83714

Received via Email
Jason Thompson @
SPF 9/27/2016
JZN

Subject: *Report of Water Level Monitoring Results from Dry Creek Ranch Aquifer Monitoring Plan*

Dear Leslie,

This letter summarizes the status of the Dry Creek Ranch Aquifer Monitoring Plan (Plan) dated April 2008. The Plan was implemented by JMM Dry Creek (JMM) as part of a Water Rights Agreement (Agreement) between the Dry Creek Rural Neighborhood Association (DCRNA) and JMM Dry Creek (JMM). The Agreement, with an effective date of January 14, 2009, was established to resolve the DCRNA protest of JMM's Application for Permit 63-32423 and to avoid a possible protest of JMM's Application for Transfer 73817.

Note that JMM changed its name to P&F Dry Creek, LLC, in July 2014. Idaho Department of Water Resources changed the name on Permit 63-32423 on August 25, 2014.

The Plan originally included six wells located on the Dry Creek Ranch property and four off-site wells. The on-site wells are Well 9, Payne Well, Big Pump Well, Hot Well, Stockwater Well, and the Pasture Well. The four off-site wells are the Beliveau Well, Thompson Well, Graves Well, and the Dater Well. The locations of these wells are shown on the attached Figure 1.

Monitoring of these ten wells began in June 2007. Measurements were taken every two months through 2008, and then every 6 months thereafter. The most recent set of measurements were taken on April 19 & 20, 2016. Since April 2010, artesian pressure has not been measured from the Pasture Well because the well head is leaking, preventing an accurate measurement of pressure. The well head would have to be repaired in order to continue to be used as a monitoring location.

The Agreement also required adding six off-site DCRNA wells to the Plan. In April 2009, three DCRNA wells were added to the monitoring program: the Podolan Well, Johnston Well, and the Rishel Well. These wells are shown on Figure 1. These wells were measured every two months through April 2010, then every 6 months thereafter. The most recent set of measurements were taken on April 19 & 20, 2016.

Three additional DCRNA wells were added to the program in April 2010: the Golis Well, the Chapin Well, and the Hull Well. These wells are shown on Figure 1. Water levels from these three wells were measured every two months for a year, then every 6 months thereafter. The most recent set of measurements were taken on April 19 & 20, 2016.

During Fall 2012 monitoring, our electric line well sounder became snagged somewhere along the drop pipe/power cable in the Graves Well. Any future monitoring at this well would require installation of a well sounding tube. Connie Graves declined our offer to install a well sounding tube free of charge. As a result, we have removed her well from the well monitoring list.

Kathy Jordan's well was added to the monitoring program in April 2016. The Jordan well is located approximately 800 feet northeast of the Golis well. This well is shown on Figure 1. The most recent set of measurements were taken on April 20, 2016.

During Spring of 2015, the new homeowner of the Thompson Well requested that his well be removed from the monitoring program. If you can identify a new domestic well for addition to the monitoring program, and obtain agreements from the homeowner, we will include them in the next monitoring period.

Measurements from seven of the ten original wells (excluding the Pasture Well, Thompson Well, and Graves Well) plus the current six off-site DCRNA wells will continue to be taken twice a year (April and October) until termination of the program, or measurements are no longer physically possible, or a well is withdrawn from the program by the well Owner. In accordance with the Plan, monitoring will continue until at least 2025 (i.e., 15 years after permit approval).

Water level measurements collected to date from the 16 monitoring wells currently in the Plan are presented in the attached Table 1. These measurements are presented graphically in the attached Figure 2.

Please contact Terry Scanlan at SPF with any questions you may have regarding the information contained in this letter.

Sincerely,

Handwritten signature of Ashley Ritter in black ink, followed by the letters "FOR" in a similar style.

Ashley Ritter, E.I.T., G.I.T.
Associate Engineer

Cc: Bob Taunton, Taunton Group
Bryce Brunsting, Hearthstone
Dennis Owsley, Idaho Department of Water Resources
Michele Edl, Idaho Department of Water Resources
Marian Shaw
John Johnston
Dale Podolan
Michael Rishel
Philip Dater
Kathryn Beliveau
Tom Golis
Gayle Chapin
Shannon Hull
Kathy Jordan
SPF File #1017.0030

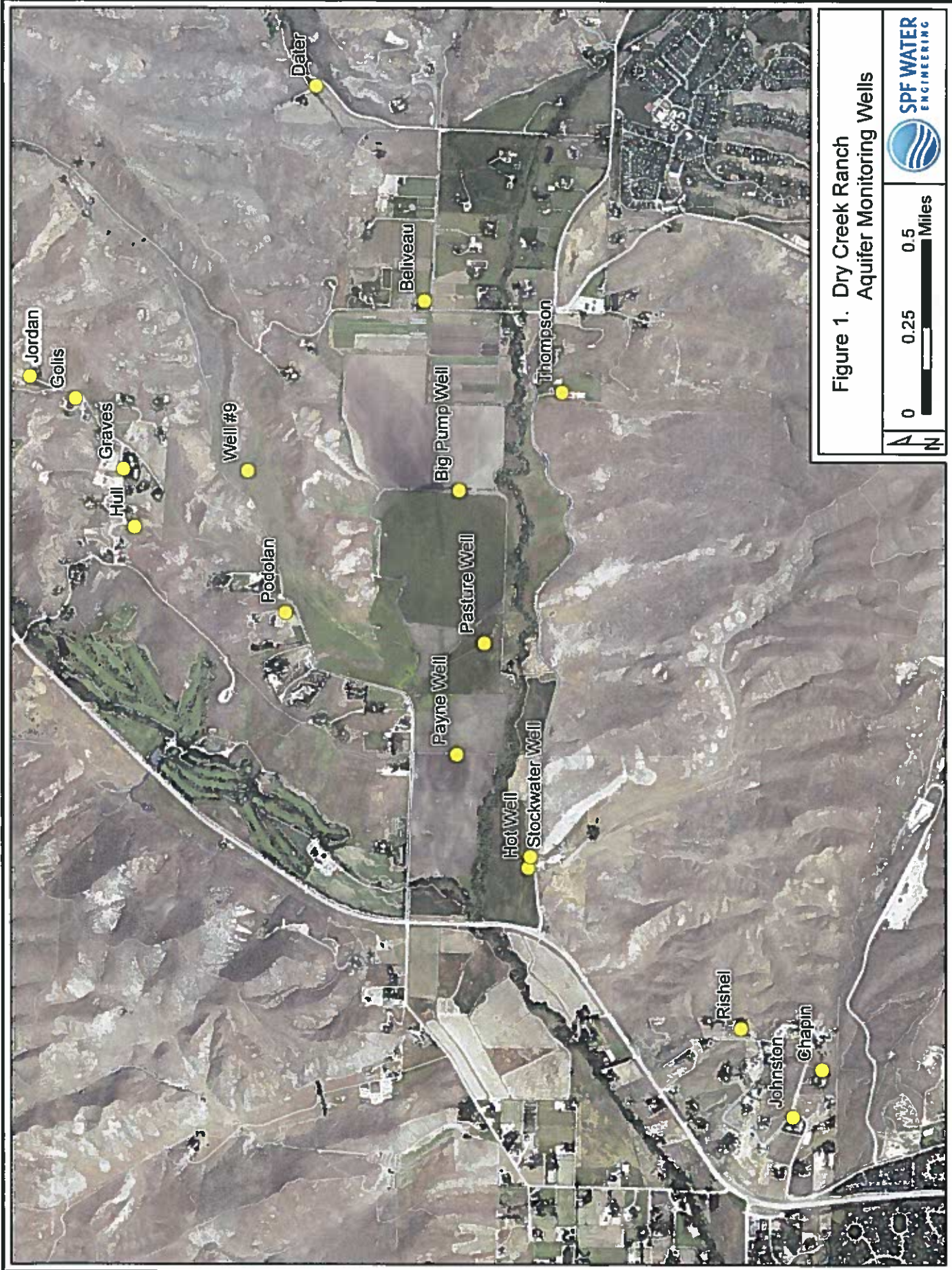


Figure 1. Dry Creek Ranch
Aquifer Monitoring Wells



Table 1. Dry Creek Water Level Monitoring Results

Date	# (ft. DTW)	Payne (psi)	Big Pump Well (ft. DTW)	Hot Well (psi)	Stockwater (ft. DTW)	Pasture (psi)	Bellveau (ft. DTW)	Thompson (ft. DTW)	Graves (ft. DTW)	Dater (ft. DTW)	Johnston (ft. DTW)	Rishel (ft. DTW)	Podolan (ft. DTW)	Chapin (ft. DTW)	Hull (ft. DTW)	Golis (ft. DTW)	Jordan (ft. DTW)
6/6/07		4.0	31.37	10.0	19.10	1.0	48.43	36.53	154.28	48.02							
7/30/07	72.25	4.0	35.88	8.5	19.58	2.0	50.53	40.74	153.25	50.35							
10/12/07	71.95	4.0	27.87	10.0	19.26	3.0	52.98	39.72	153.72	47.82							
12/13/07	73.55	9.3	26.92	11.3	20.37	3.0	52.13	38.23	155.18	51.20							
2/13/08	72.20	5.0	27.35	11.0	20.54	3.0	51.75	39.23	154.92	49.70							
4/7/08	73.40	4.0	24.52	11.0	21.60	4.0	50.02	38.70	154.55	45.15							
6/24/08	73.16	4.0	31.97	11.0	19.32	2.5	48.78	36.95	154.10	48.42							
8/6/08	73.02	5.0	31.75	11.0	19.78	3.0	49.10	38.65	154.19	49.79							
9/8/08			28.3														
9/19/08			28.2														
10/2/08	71.72	4.0	26.92	10.0	19.12	3.0	52.54	39.52	154.01	47.63							
12/3/08	73.32	9.0	28.72	10.0	20.31	3.0	52.13	38.17	154.98	51.00							
4/27/09	72.83	3.5	24.58	8.6	19.10	1.0	50.53	36.68	155.09	45.56	85.76	134.33	73.52				
6/29/09											91.79	157.94	74.76				
8/31/09											99.32	152.10	75.89				
10/20/09	74.19	5.0	26.65	7.8	18.99	2.5	53.03	39.65	155.72	47.82	83.97	133.52	75.55				
12/29/09											80.22	131.17	74.82				
2/26/10											80.40	131.64	73.76				
4/19/10	72.15	6.0	23.64	8.7	17.69	(1)	50.05	35.76	160.94	45.22	83.73	130.45	72.60	65.19	131.72	254.71	
6/30/10																	
8/31/10																	
10/26/10	73.58	4.5	26.41	8.9	19.22	(1)	51.84	38.88	156.01	47.37	88.72	134.75	74.66	85.25	148.08	255.51	
12/30/10																	
2/28/11																	
4/27/11	70.51	6.7	21.66	9.5	17.19	(1)	47.78	34.60	148.82	34.87	77.96	132.38	69.53	68.29	132.31	255.70	
10/21/11	71.04	7.2	23.26	11.4	18.89	(1)	49.20	35.48	154.48	46.60	85.66	132.32	71.37	68.81	131.90	254.88	
4/24/12	68.71	9.0	20.55	13.5	18.60	(1)	46.47	32.98	168.18	37.55	77.65	130.12	68.70	74.47	137.61	258.63	
10/23/2012	71.88	5.0	24.6	8.0	18.49	(1)	50.08	36.76	(3)	47.20 ⁽²⁾	87.37	132.63	72.32	83.12	133.49	250.83	
4/29/2013	69.04	9.0	22.58	11.5	12.02	(1)	48.92	38.57 ⁽²⁾	(3)	45.50 ⁽²⁾	81.36	134.35	69.93	(4)	136.14	252.08	
10/23/2013	74.83	(5)	28.35	10.0	17.62	(1)	54.10	40.38	(3)	50.90	88.29	132.89	74.32	85.95	133.47	250.80	
4/29/2014	73.09	(5)	24.96	9.6	15.80	(1)	51.03	37.87	(3)	39.69	76.78	170.52 ⁽²⁾	72.79	72.14	135.30	(6)	
10/26/2014	76.42	(5)	29.61	9.8	18.69	(1)	55.80	42.35	(3)	48.79	87.68	130.44	75.91	81.85	134.92	249.85	
4/28/2015	72.88	(5)	24.92	9.8	18.81	(7)	50.86	(6)	(3)	41.39	89.66	141.98	73.80	(4)	147.26	254.30	
10/21/2015	75.83	(5)	29.26	8.4	17.71	(1)	55.00	(6)	(3)	51.04	88.15	131.75	76.18	79.8	140.38	255.51	
4/19/2016		(6)				(1)	50.16	(6)	(3)	41.76	80.1	183.66 ⁽²⁾	73.8	71.62			
4/20/2016	72.55		(10)	9	15.75										141.18		297.2

(1) No measurement, most of artesian flow escaping from well head

(2) Pumping water level, pump on during measurement

(3) Sounder snagged in well, unable to measure water level

(4) No measurement; pump on, unable to measure PWL due to constriction at approximately 220ft

(5) No measurement; artesian flows bypassing pipe with hose bib used for pressure measurement

(6) No measurement; blockage between drop pipe and well casing at approximately 192 feet depth

(7) New head with hose bib was installed. No water was flowing, appears to be isolated with gate valve, but unable open gate valve to verify

(8) New home owner requested that his well be removed from the monitoring program

(9) Pump on, water spraying all around tap opening, unable to collect measurement

Figure 2. Dry Creek Water Level Monitoring Data

