

STATE OF IDAHO
DEPARTMENT OF WATER RESOURCES

The Idaho Department of Water Resources ("Department") has examined this application for temporary approval to use water under the provisions of Idaho Code § 42-202A and has determined that:

- ☐ A. The application for temporary approval should be denied because _____
- ☒ B. The application for temporary approval should be approved, since
1. The temporary approval can be properly administered.
 2. Other water sources are not readily available.
 3. The approval is in the public interest.
 4. The approval will not injure known public values associated with the water source or any known water rights.
 5. If the temporary approval is within a water district, the Department has sought and considered the recommendations of the watermaster.

This application is therefore hereby:

- ☐ A. DENIED
- ☒ B. APPROVED, subject to the following conditions:
1. Diversion and use of water under this approval is subject to all valid existing water rights.
 2. The applicant assumes all risk of the use of the water under this approval.
 3. This approval authorizes a maximum diversion volume of 0.5 AF and a maximum rate of diversion of 0.56 cfs.
 4. This approval does not grant a right-of-way across the land of another.
 5. The Department may cancel or reduce the rate of flow or volume authorized by this approval. For example, the Department may cancel or reduce this approval if it concludes the water use is injuring other water rights or adversely affecting fish, wildlife or other public values.
 6. The applicant shall not divert water when downstream minimum flow water rights are not being satisfied.
 7. This approval does not create a continuing right to use water.
 8. A temporary approval for ground water recharge or prevention of flood damage shall be an opportunistic use of surplus water and shall not interfere with the filling of surface water reservoirs.
 9. For a temporary approval authorizing ground water recharge or ground water or surface water remediation, the applicant shall measure and record the weekly quantity of water diverted and report the diversion data to the Department upon request.
 10. Water intakes should be screened to prevent entrainment or impingement of fish or other aquatic life. The maximum screen mesh size should be 0.25 inches; approach velocities should not exceed 0.5 ft/second.
 11. This temporary approval is not an authorization for the described water use to be used as mitigation or credit for any other purpose.
 12. Direct discharge of waste water/slurry is not authorized under this approval.
 13. A copy of the approved permit MUST be with pump when diverting.
 14. Other: _____
 15. This approval expires on October 30, 2020.

Signed this 7th day of April, 2020.


Adam Frederick, Water Right Supervisor

TP-86-71
PALOUSE RIVER DISTRICT, 2020



State of Idaho

DEPARTMENT OF WATER RESOURCES

Northern Region • 7600 N MINERAL DR STE 100 • COEUR D ALENE, ID 83815-7763
Phone: (208)762-2800 • Fax: (208)769-2819 • Website: www.idwr.idaho.gov

Brad Little
Governor

Gary Spackman
Director

April 7, 2020

PALOUSE RANGER DISTRICT
1700 HIGHWAY 6
POTLATCH ID 83855-9600

RE: Application for Temporary Approval of Water Use: TP-86-71

Dear Applicant(s):

Your application for temporary water appropriation has been approved and is enclosed. The approval authorizes the temporary use of water and does not grant trespass or other activity on public land or on private property.

Please review the **conditions of approval on page 2 of the Application for Temporary Approval form** to understand the limitations associated with the temporary use of water.

This temporary approval **expires on** October 30, 2020. The expiration date cannot be extended under this temporary approval.

If you have any questions, please feel free to contact this office, and any of our agents will be able to assist you. If you require additional information regarding this matter, please call me at (208) 762-2817 or email me at Luke.Bates@idwr.idaho.gov.

Sincerely,

Luke Bates
Water Resource Agent.

Enclosure(s) Application



STATE OF IDAHO
DEPARTMENT OF
ENVIRONMENTAL QUALITY

1118 F Street • Lewiston, Idaho 83501 • (208) 799-4370
www.deq.idaho.gov

Governor Brad Little
Director John H. Tippets

April 6, 2020

Adam Frederick
Department of Water Resources
7600 North Mineral Drive, Suite 100
Coeur d'Alene, Idaho 83815

Dear Mr. Frederick:

We received your letter requesting our comments for a temporary right to withdraw a maximum rate of diversion of 0.56 cubic feet per second or 250 gallons per minute, total volume of 0.5 acre-feet of water from the East Fork Potlatch River between June 1 and October 30, 2020, by the USDA Forest Service in partnership with the Latah Soil and Water Conservation District for irrigation of plants and dust control for a wetland restoration project. Assuming all federal, state and local permits have been obtained, regulations met, and reviews completed, we offer the following comments.

This project is located in assessment unit ID17060306CL051_03 and is listed in Category 2 of Idaho's 2016 Integrated Report as fully supporting the assessed uses of cold water aquatic life and secondary contact recreation.

DEQ recommends that the withdrawal from the East Fork Potlatch River be conducted while flows are at their highest for the season, and withdrawn from an area within the river where flow is adequate to protect beneficial uses while still allowing for the requested withdrawal.

Thank you for the opportunity to comment on your application. If you have any questions regarding the Idaho Water Quality Standards or the conditions listed above, please call us at (208) 799-4370.

Sincerely,

A handwritten signature in cursive script that reads "Sujata Connell".

Sujata Connell
Surface Water Quality Manager

c: Stefani Spencer and Eric Crook, Palouse Ranger District
EDMS

Frederick, Adam

From: Alleman, Tammy
Sent: Monday, April 6, 2020 10:01 AM
To: Frederick, Adam
Subject: FW: Request for Comments for Temporary Water Use on East Fork Potlatch River

FYI

From: Swearingen, Zachary [mailto:zachary.swearingen@idfg.idaho.gov]
Sent: Friday, April 3, 2020 9:27 AM
To: Alleman, Tammy <Tammy.Alleman@idwr.idaho.gov>
Subject: RE: Request for Comments for Temporary Water Use on East Fork Potlatch River

Hi Tammy,

I do not plan to comment on this application.

Thank you,

Zach Swearingen
Environmental Staff Biologist
Idaho Department of Fish and Game - Clearwater Region
3316 16th St
Lewiston, ID 83501
208-799-5010



From: Alleman, Tammy <Tammy.Alleman@idwr.idaho.gov>
Sent: Wednesday, April 01, 2020 3:32 PM
To: Sujata.Connell@deq.idaho.gov; Swearingen, Zachary <zachary.swearingen@idfg.idaho.gov>
Cc: Frederick, Adam <Adam.Frederick@idwr.idaho.gov>
Subject: Request for Comments for Temporary Water Use on East Fork Potlatch River

Dear Interested Agencies:

The Department of Water Resources is seeking comment and/or recommendation from your agency, regarding this application to temporarily appropriate 0.5 acre-feet of water each from the East Fork Potlatch River listed on the application, for irrigation of plants & dust control, by the USDA Forest Service. A copy of the applications is attached for your reference.

Alleman, Tammy

From: Alleman, Tammy
Sent: Wednesday, April 1, 2020 3:32 PM
To: 'Sujata.Connell@deq.idaho.gov'; 'Swearingen,Zachary'
Cc: Frederick, Adam
Subject: Request for Comments for Temporary Water Use on East Fork Potlatch River
Attachments: USDA Forest Service Temporary for East Fork Potlatch River.pdf

Dear Interested Agencies:

The Department of Water Resources is seeking comment and/or recommendation from your agency, regarding this application to temporarily appropriate 0.5 acre-feet of water each from the East Fork Potlatch River listed on the application, for irrigation of plants & dust control, by the USDA Forest Service. A copy of the applications is attached for your reference.

Would you please submit your comments no later than April 7, 2020? If we do not hear from you by that date, we will assume that no comment from you means you have no objection to, concerns about, or conditions pertaining to the issuance of this permit.

Please send comments to Adam Frederick by regular mail to the above address, by FAX to 208-762-2819 or by e-mail to adam.frederick@idwr.idaho.gov.

If you have any questions, don't hesitate to contact Adam Frederick at the Northern Region Office (208) 762-2800.

Thank you,

Tammy

*Tammy Alleman
Administrative Assistant
Idaho Department of Water Resources
7600 N Mineral Drive, Suite 100
Coeur d'Alene, ID 83815-7763
Phone: (208) 762-2800
Fax (208) 762-2819*

LATAH SOIL AND WATER CONSERVATION DISTRICT

220 East Fifth Street, Suite 208

Moscow, Idaho 83843-2964

Phone: 208-874-7880

Email: theekin@latahswcd.org

Website: www.latahswcd.org



March 27, 2020

Idaho Department of Water Resources, Northern Regional Office
7600 Mineral Drive, Suite 100
Coeur d'Alene, Idaho 83815-7763

RECEIVED

APR 01 2020

IDWR / NORTH

Subject: Application for Temporary Approval of Water Use
USFS Two-Mile Meadow Stream and Meadow Restoration Project

Greetings:

Enclosed is an Application for Temporary Approval of Water Use, signed by Stefani Spencer, District Ranger, Palouse Ranger District, Nez Perce-Clearwater National Forest. The intended use of the water is for irrigation of plants at a stream and wetland restoration project on Federal Land. The project site is a large meadow adjacent to the East Fork Potlatch River southeast of Bovill, Idaho. The historic channel has been reconnected, restoring floodplain connection, but the past channel straightening and decades-long dehydration of the meadow severely reduced the native hydrophilic vegetation. This year, the major focus of work will be planting several thousand native woody and herbaceous riparian plants throughout the meadow, concentrating on the banks of the restored channel and off-channel habitat areas. Planting will take place in spring and fall 2020 and will include cuttings and containerized plants, all of which demonstrate improved survival and establishment when they are watered 2 or 3 times after planting. Some minor additional repair work may be needed in 2020, though currently the work planned for 2020 at this time will be the revegetation work.

While the USFS is the land manager and, therefore, the applicant, the irrigation equipment is owned by the Latah SWCD (system: pump with screened intake, hose, watering wand, water storage shuttles). The Latah Soil and Water Conservation is acting as the revegetation manager for the US Forest Service, by providing the plants, the planting labor, and the watering of the newly-placed plants.

Give me a call if you have any questions.

With regards,

A handwritten signature in blue ink that reads "Trish Heekin".

Trish Heekin
Conservation Planner

Enclosures: Application for Temporary Approval of Water Use
Fee - check

RECEIVED

Form 201A-4/17 2020

ID No. TP 86-71

IDWR / NORTH

STATE OF IDAHO
DEPARTMENT OF WATER RESOURCES

APPLICATION FOR TEMPORARY APPROVAL OF WATER USE

For a use not intended to become an established water right and not to exceed one (1) year in duration in accordance with Idaho Code § 42-202A.

Name of applicant Stefani Spencer, District Ranger or Eric Crook, Soil Scientist Phone (208) 875-1131
Mailing address Palouse Ranger District, 1700 Highway 6 City Potlatch
State Idaho Zip 83843 Email Eric.Crook@usda.gov

1. Source of water East Fork Potlatch River tributary to Potlatch River
2. Location of point(s) of diversion. If more than two, attach a Point of Diversion/Place of Use Supplement. ☒

TWP	RGE	SEC	GOVT LOT	1/4	1/4	1/4	County	Source	Local name or tag #

3. Location of place of use. If more rows are needed, attach a Point of Diversion/Place of Use Supplement. ☐

TWP	RGE	SEC	NE				NW				SW				SE				Totals
			NE	NW	SW	SE	NE	NW	SW	SE	NE	NW	SW	SE	NE	NW	SW	SE	
40N	1W	13												8.8					8.8
40N	1W	24					5.8	3.0	1.5										10.3

4. Proposed use of water:

- a. ☐ Prevention of flood damage ☐ Ground water recharge ☐ Ground water or surface water remediation
☒ Other (Limited to a diverted volume of 5 acre-feet.) Describe: Irrigation of plants; dust control

- b. Attach a detailed description of how the proposal will accomplish the intended objective, such as prevention of flood damage.

5. Amount of water. Complete all three:

- a. Maximum rate of diversion: 0.56 cfs; or 250 gpm
b. Maximum daily volume: AF; or 6,000 gallons.
c. Maximum volume over the duration of the request: 0.5 AF; or gallons.

6. Duration of diversion: from June 1, 2020 (month-day) to October 30, 2020 (month-day)

7. Describe proposed diverting works: Pump w/screened intake; pump water to water storage container or watering device

8. a. Who owns the property at the requested point of diversion? Applicant (USDA Forest Service)
b. Who owns the facilities that will convey water to the place of use? Latah Soil and Water Conservation District
c. Who owns the land to be irrigated or place of use? Applicant (USDA Forest Service)
d. If any of the items above is owned by a person or entity other than the applicant, describe the arrangement allowing access and attach written evidence of the arrangement Latah SWCD: pumps, screened intakes, hoses, water storage containers

9. Attach an 8 1/2" x 11" map identifying the water source, point(s) of diversion, place(s) of use and conveyance system.

I hereby acknowledge that I assume all risk of the diversion and use of the water under this approval. I certify this is a temporary use and is not intended to become an established water right.

Stefani Spencer District Ranger 3/17/2020
Signature of Applicant Title, if any Date

Received by Ja Date N035990 Time 4-1-2020
\$50.00 fee receipted by Date
Watermaster comments received? Date

Ident. No. TP 86-71

APPLICATION FOR TEMPORARY APPROVAL OF WATER USE

Additional information

Item 4.b. Description of how the proposal will accomplish the intended objective.

The crew of the Latah Soil and Water Conservation District will use the water from the East Fork Potlatch River to irrigate plants.

The crew will set up a pump on the top of bank, away from the creek, drop an intake hose into the water, and start the pump. The intake hose is screened. The water pumped from the creek is used to water plants (woody and herbaceous) that they will be planting in a wetland/stream restoration project in Two Mile Meadow. They water immediately after planting to eliminate all air pockets to ensure good soil-to root contact and to improve survival. They will return to each plant 3 or 4 times over the subsequent 2 weeks to repeat the watering; again, this is to improve survival and establishment.

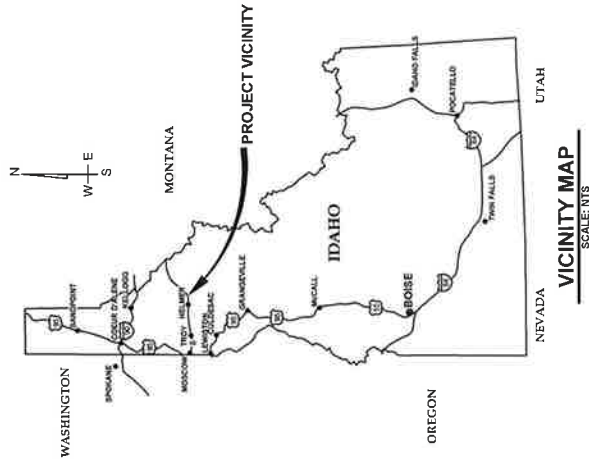
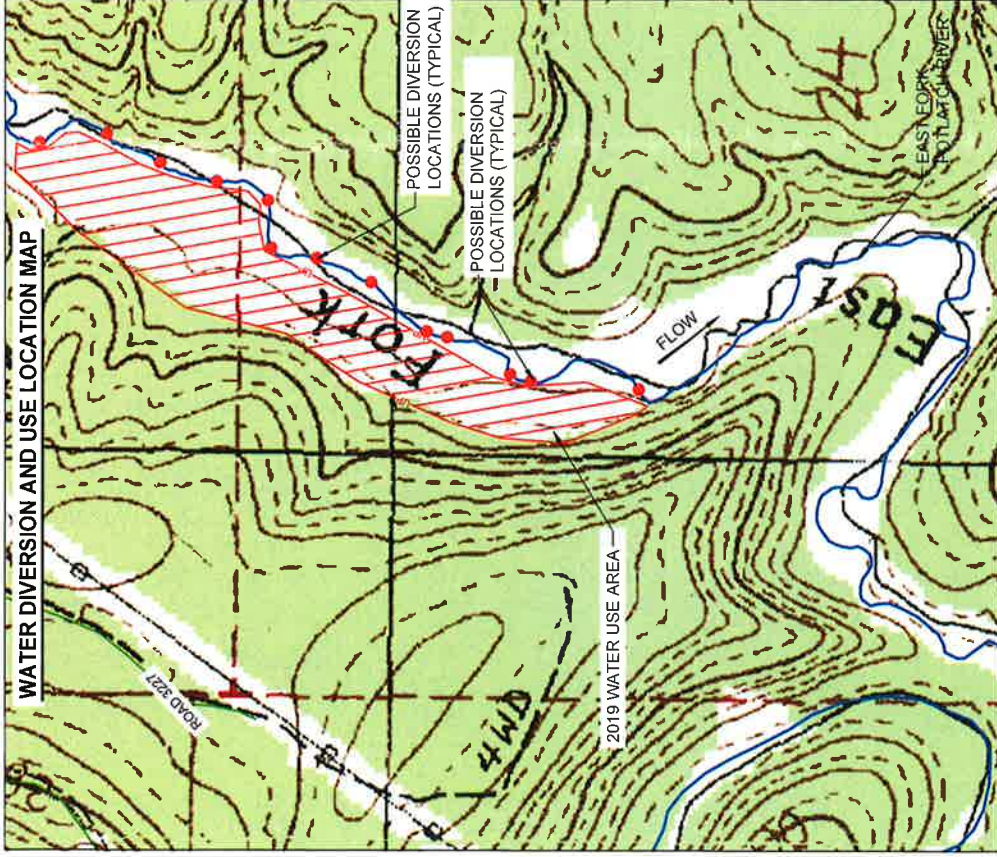
The crew will also use water from the East Fork Potlatch to irrigate plants staged at the meadow awaiting planting.

Irrigation will occur primarily during the planting time periods, generally in June and in September/October.

Item 8.a. Describe the arrangement allowing access and attach written evidence of the arrangement.

The Latah Soil and Water Conservation District is partnering with the USFS in this wetland/stream restoration project. Funding is from several sources: the USFS; and in addition, DEQ CWA funding, BPA funding, and PCSRF funding from the Idaho Office of Species Conservation, all through the Latah Soil and Water Conservation District. The Latah Soil and Water Conservation District provided the engineering design, and provides the plant materials and labor to implement the revegetation work, using Latah SWCD equipment, including pumps, hoses, and water storage containers staged on site June through October.

TWO-MILE MEADOW RESTORATION PROJECT



PREPARED FOR:



Latah Soil and Water Conservation District
220 EAST 5TH STREET, SUITE 208
MOSCOW, IDAHO 83843
TELEPHONE: (208) 874-7680

PROJECT OWNER:

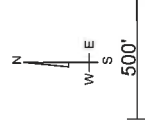


Palouse Ranger District
Nez Perce-Clearwater National Forest
1700 HIGHWAY 6
POTLATCH, IDAHO 83855
TELEPHONE: (208) 875-1131

ENGINEER:



Alta Science & Engineering, Inc.
220 EAST 5TH STREET, SUITE 325
MOSCOW, IDAHO 83843
TELEPHONE: (208) 862-7888



--	--	--	--	--	--	--	--	--	--	--	--	--	--	--	--	--	--	--	--	--	--	--	--	--	--	--	--	--	--	--	--	--	--	--	--	--	--	--	--	--	--	--	--	--	--	--	--	--	--	--	--	--	--	--	--	--	--	--	--	--	--	--	--	--	--	--	--	--	--	--	--	--	--	--	--	--	--	--	--	--	--	--	--	--	--	--	--	--	--	--	--	--	--	--	--	--	--	--	--	--	--	--	--	--	--	--	--	--	--	--	--	--	--	--	--	--	--	--	--	--	--	--	--	--	--	--	--	--	--	--	--	--	--	--	--	--	--	--	--	--	--	--	--	--	--	--	--	--	--	--	--	--	--	--	--	--	--	--	--	--	--	--	--	--	--	--	--	--	--	--	--	--	--	--	--	--	--	--	--	--	--	--	--	--	--	--	--	--	--	--	--	--	--	--	--	--	--	--	--	--	--	--	--	--	--	--	--	--	--	--	--	--	--	--	--	--	--	--	--	--	--	--	--	--	--	--	--	--	--	--	--	--	--	--	--	--	--	--	--	--	--	--	--	--	--	--	--	--	--	--	--	--	--	--	--	--	--	--	--	--	--	--	--	--	--	--	--	--	--	--	--	--	--	--	--	--	--	--	--	--	--	--	--	--	--	--	--	--	--	--	--	--	--	--	--	--	--	--	--	--	--	--	--	--	--	--	--	--	--	--	--	--	--	--	--	--	--	--	--	--	--	--	--	--	--	--	--	--	--	--	--	--	--	--	--	--	--	--	--	--	--	--	--	--	--	--	--	--	--	--	--	--	--	--	--	--	--	--	--	--	--	--	--	--	--	--	--	--	--	--	--	--	--	--	--	--	--	--	--	--	--	--	--	--	--	--	--	--	--	--	--	--	--	--	--	--	--	--	--	--	--	--	--	--	--	--	--	--	--	--	--	--	--	--	--	--	--	--	--	--	--	--	--	--	--	--	--	--	--	--	--	--	--	--	--	--	--	--	--	--	--	--	--	--	--	--	--	--	--	--	--	--	--	--	--	--	--	--	--	--	--	--	--	--	--	--	--	--	--	--	--	--	--	--	--	--	--	--	--	--	--	--	--	--	--	--	--	--	--	--	--	--	--	--	--	--	--	--	--	--	--	--	--	--	--	--	--	--	--	--	--	--	--	--	--	--	--	--	--	--	--	--	--	--	--	--	--	--	--	--	--	--	--	--	--	--	--	--	--	--	--	--	--	--	--	--	--	--	--	--	--	--	--	--	--	--	--	--	--	--	--	--	--	--	--	--	--	--	--	--	--	--	--	--	--	--	--	--	--	--	--	--	--	--	--	--	--	--	--	--	--	--	--	--	--	--	--	--	--	--	--	--	--	--	--	--	--	--	--	--	--	--	--	--	--	--	--	--	--	--	--	--	--	--	--	--	--	--	--	--	--	--	--	--	--	--	--	--	--	--	--	--	--	--	--	--	--	--	--	--	--	--	--	--	--	--	--	--	--	--	--	--	--	--	--	--	--	--	--	--	--	--	--	--	--	--	--	--	--	--	--	--	--	--	--	--	--	--	--	--	--	--	--	--	--	--	--	--	--	--	--	--	--	--	--	--	--	--	--	--	--	--	--	--	--	--	--	--	--	--	--	--	--	--	--	--	--	--	--	--	--	--	--	--	--	--	--	--	--	--	--	--	--	--	--	--	--	--	--	--	--	--	--	--	--	--	--	--	--	--	--	--	--	--	--	--	--	--	--	--	--	--	--	--	--	--	--	--	--	--	--	--	--	--	--	--	--	--	--	--	--	--	--	--	--	--	--	--	--	--	--	--	--	--	--	--	--	--	--	--	--	--	--	--	--	--	--	--	--	--	--	--	--	--	--	--	--	--	--	--	--	--	--	--	--	--	--	--	--	--	--	--	--	--	--	--	--	--	--	--	--	--	--	--	--	--	--	--	--	--	--	--	--	--	--	--	--	--	--	--	--	--	--	--	--	--	--	--	--	--	--	--	--	--	--	--	--	--	--	--	--	--	--	--	--	--	--	--	--	--	--	--	--	--	--	--	--	--	--	--	--	--	--	--	--	--	--	--	--	--	--	--	--	--	--	--	--	--	--	--	--	--	--	--	--	--	--	--	--	--	--	--	--	--	--	--	--	--	--	--	--	--	--	--	--	--	--	--	--	--	--	--	--	--	--	--	--	--	--	--	--	--	--	--	--	--	--	--	--	--	--	--	--	--	--	--	--	--	--	--	--	--	--	--	--	--	--	--	--	--	--	--	--	--	--	--	--	--	--	--	--	--	--	--	--	--	--	--	--	--	--	--	--	--	--	--	--	--	--	--	--	--	--	--	--	--	--	--	--	--	--	--	--	--	--	--	--	--	--	--	--	--	--	--	--	--	--	--	--	--	--	--	--	--	--	--	--	--	--	--	--	--	--	--	--	--	--	--	--	--	--	--	--	--	--	--	--	--	--	--	--	--	--	--	--	--	--	--	--	--	--	--	--	--	--	--	--	--	--	--	--	--	--	--	--	--	--	--	--	--	--	--	--	--	--	--	--	--	--	--	--	--	--	--	--	--	--	--	--	--	--	--	--	--	--	--	--	--	--	--	--	--	--	--	--	--	--	--	--	--	--	--	--	--	--	--	--	--	--	--	--	--	--	--	--	--	--	--	--	--	--	--	--	--	--	--	--	--	--	--	--	--	--	--	--	--	--	--	--	--	--	--	--	--	--	--	--	--	--	--	--	--	--	--	--	--	--	--	--	--	--	--	--	--	--	--	--	--	--	--	--	--	--	--	--	--	--	--	--	--	--	--	--	--	--	--	--	--	--	--	--	--	--	--	--	--	--	--	--	--	--	--	--	--	--	--	--	--	--	--	--	--	--	--	--	--	--	--	--	--	--	--	--	--	--	--	--	--	--	--	--	--	--	--	--	--	--	--	--	--	--	--	--	--	--	--	--	--	--	--	--	--	--	--	--	--	--	--	--	--	--	--	--	--	--	--	--	--	--	--	--	--	--	--	--	--	--	--	--	--	--	--	--	--	--	--	--	--	--	--	--	--	--	--	--	--	--	--	--	--	--	--	--	--	--	--	--	--	--	--	--	--	--	--	--	--	--	--	--	--	--	--