

SEBGWMA WELL INVENTORY

Owners Name Chuck Ensign, MK Rail Corporation

Address 4600 Apple St, Boise Idaho 83705

Telephone 389-3037

W.R. Number 63-02199

Location: T 3N R 2E S 31 1/4 NW 1/4 NW

Directions to Well:

North on Broadway, East on Federal way. Right on
Apple. Cross Railroad tracks. MK Rail on left.
Pumphouse is concrete at south side of property.
(must be escorted there).

Diversion Unit Data:

Motor Brand Franklin HP 30 Serial # _____

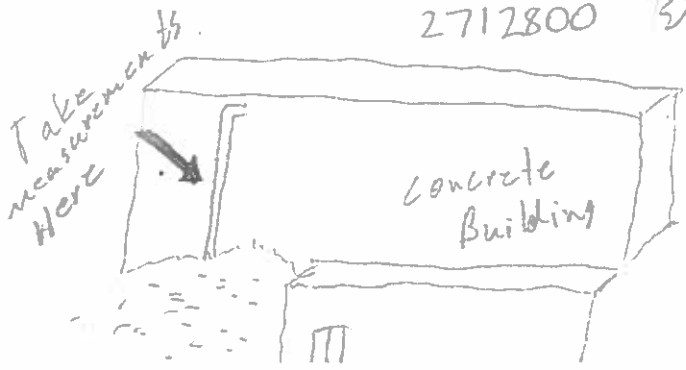
Pump Brand Berkeley Serial # _____

Pipeline Discharge Size 4"Ø

System Diagram:

McCrometer
Flowmeters - fluctuating between 80-100 GPM

Totalizer 2711400 start
2712800 stop } 10 min
140 GPM



Narrative:

use outer vertical pipe. No joints or anything to cause turbulence. Nothing is this easy.

Forgot to take photo.

Measurements

Measuring equipment Polysonic Flow Meter

Serial # 150231

Results:

Notes:

1) Polysonic - 146.527 GPM

2) MK's totalizer - 140 GPM

74.4570 diff

Maps, Photographs - See Attached:

Yes

No

Craig L. Gubler

Inspectors Name and Title

7-26-95

Date

63-02199

measurement results

MM-DD HH:MM
07-26 12:49

MODE SELECT
INPUT

OUTER DIAMETER
6.8433 IN

PIPE MATERIAL
? CS,SS

WALL THICKNESS
0.2790 IN

INNER LINING
? NO LING.

KIND OF FLUID
? WATER

SENSOR MOUNTING
? U

TYPE OF SENSOR
? SMALL

DATA CHANGE
? NO

SPACING
5.076 IN U

ZERO MODE
CLEAR

ZERO MODE
AUT ZERO

ZERO MODE
ZERO OPR

07-26 13:0400 *R
+141.067E 0GPM

07-26 13:0400 *R
+147.936E 0GPM

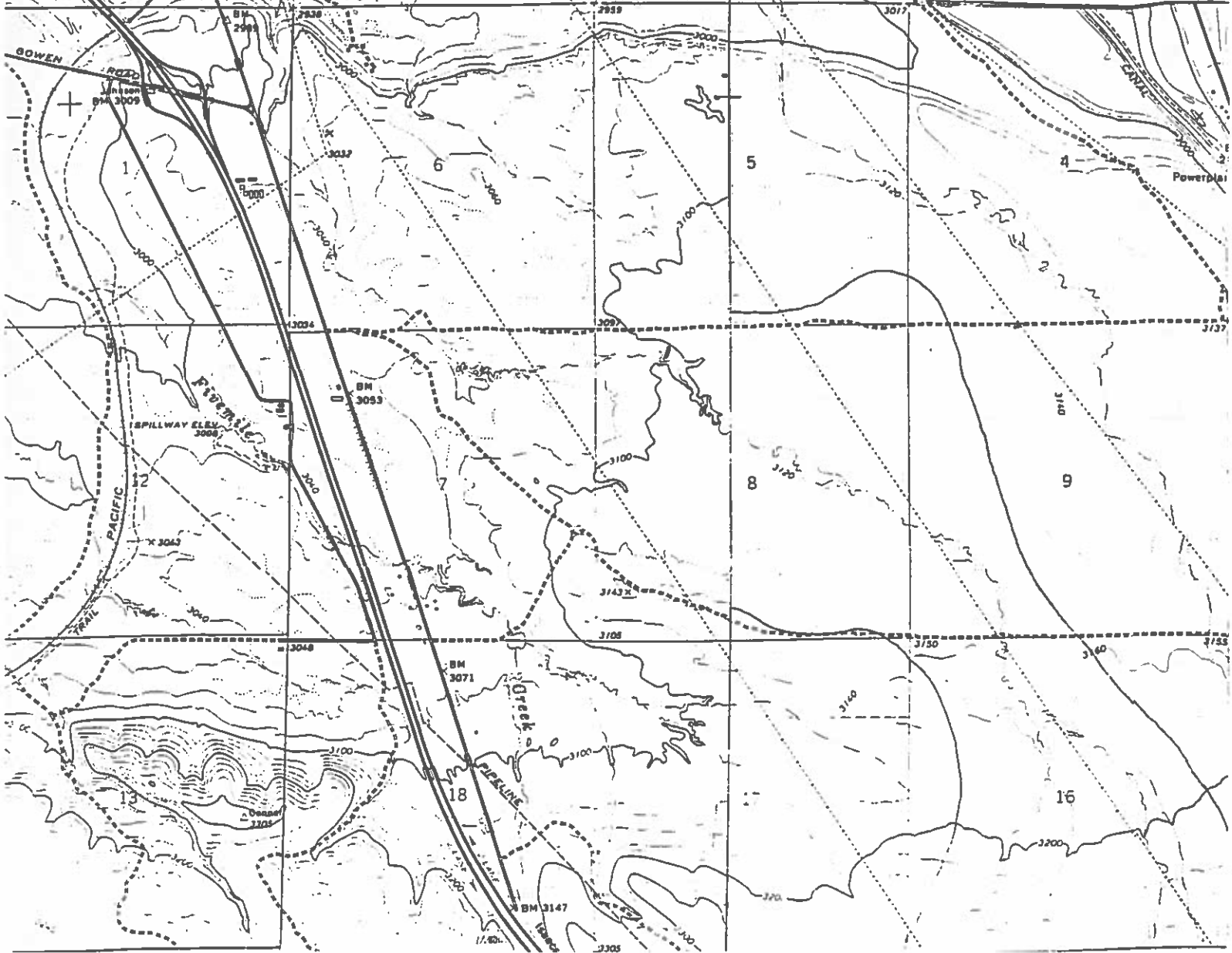
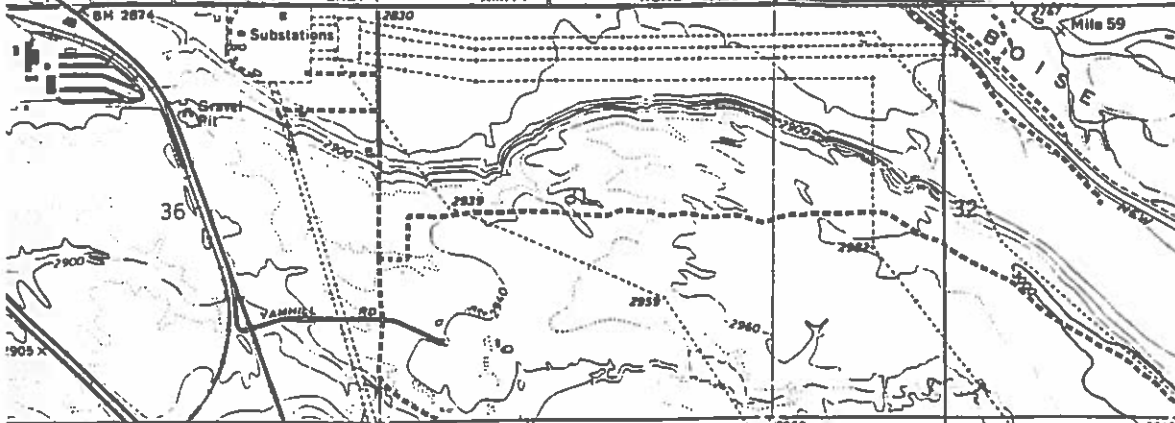
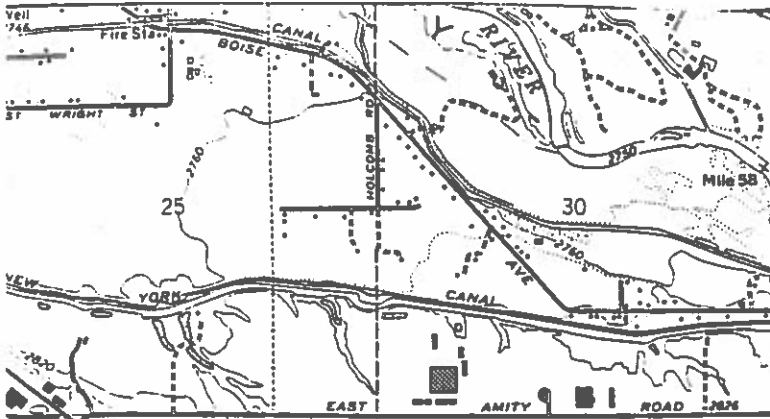
07-26 13:0400 *R
+150.570E 0GPM

MODE SELECT
T0 CHECK

0230.1 MMSEC
098.00 % T0

07-26 13:0600 *R
+002.00 % AI2

Location of 63-07199



WATER RIGHTS WITHIN THE SEBGWMA WITH MEASUREMENT REQUIREMENT

WR #	Name	Stage	CFS	Measuring Devise	Well Lo
63-03118	IDAHO POWER	License	1.4	OPTION 1	no
63-03197	IDAHO POWER	License	0.51	OPTION 1	no
63-03544	IDAHO POWER	License	2.67	OPTION 1	no
63-03416	TRUS JOIST MACMILLAN	License	0.56	OPTION 1	no
63-07304	THINDERBIRD DEV.	License	0.36		no
<u>63-07199</u>	EMKAY DEV	LICENSE	1.09	OPTION 1	no
63-08006	GRANGER	LICENSE	0.82	OPTION 2	no
63-11546	CROMAN CORP	LICENSE	0.29	OPTION 1	no
63-11610	SIMPLOT	PERMIT	1.1	OPTION 1	YES
63-11566	IND. SCHOOL DIST	PERMIT	0.3	OPTION 1	YES
63-12062	IND. SCHOOL DIST	PERMIT	0.22	OPTION 1	no
63-07577	BOISE WATER CORP	LICENSE	2.01	OPTION 1	YES
63-08236	BOISE WATER CORP	LICENSE	3.63	OPTION 1	YES
63-08992	BOISE WATER CORP	PERMIT	7	OPTION 1	no
L63-08992	BOISE WATER CORP	LICENSE	1.97	OPTION 1	no
63-09029	BOISE WATER CORP	PERMIT	4	OPTION 1	no
63-11541	BOISE WATER CORP	PERMIT	2.9	OPTION 1	YES
63-11949	BOISE WATER CORP	PERMIT	1.1	OPTION 1	YES
63-10208	MICRON TECHNOLOGY	LICENSE	0.61	OPTION 1	YES
63-11293	MICRON TECHNOLOGY	PERMIT	2.25	OPTION 1	YES