

OWNER CODE	NAME & ADDRESS	PRIORITY DATE	WATER USE	USE PERIOD FROM TO	DIVERSION RATE	DIVERSION VOLUME
C	INDEPENDENT SCHOOL DISTRICT NO 1 C/O ROGER CARLSON 405 COLLINS RD BOISE ID 83702-4587 (208) 338-3420	10/01/1993	IRRIGATION	03-15 11-15	0.220 CFS	0.220 CFS

Water Source: GROUNDWATER

Tributary to:

Stage: PERMIT

Point(s) of Diversion:

T03N R02E S25

SWSWE

ADA County

Place of use Legal Description for: IRRIGATION

NE	ENE	NENE	ENE	SENE	ENE	SENE	ENE	SENE	ENE	SENE	ENE	SENE	ENE	SENE	SUM
T	R	S	: Lt	Ac	Lt	Ac	Lt	Ac	Lt	Ac	Lt	Ac	Lt	Ac	: SUM
03N	02E	25	:												: 5.4
			:												: 5.4
TOTAL ACRES															

Pou County: ADA

Other Water Rights with Same Point(s) of Diversion and Source:
63-11816

Other Water Rights Listing Overlapping Place(s) of use:
63-02392 63-11816

Conditions of Approval:

- 058 - The point of diversion identified in this right is located
- Within the boundaries of the Boise Front Low Temperature Geothermal Resource Groundwater Management Area. The well -driller must monitor water temperatures while drilling the well. If water with a temperature greater than 85 degrees Fahrenheit is encountered by the driller, drilling must immediately cease, and the Department must be notified. Drilling shall not resume until the Department has reviewed the drilling conditions, and established standards for construction with the driller.
- 060 - The rate of diversion of water for irrigation under this right
- and all other water rights on the same land shall not exceed
 - **AMOUNT** cubic feet per second for each acre of land.

Remarks:

Place of use is Liberty Elementary School.
The point of diversion is located within the Boise Front Low Temperature Geothermal Resource Groundwater Management Area and use of water with a temperature greater than 85 degrees Fahrenheit is not authorized under this permit.

Dates: App. Received: 10/01/1993 Priority Date: 10/01/1993
Proof Due Date: 05/01/1995 Proof Made Date:
Exam Made Date: Exam Sent to S.O.:

Misc: Water District Number: 63 Field Exam Fee:

Comments: Date: 03/01/1994 User-ID: LESTER Subject: MORATORIUM EXEMPTION & RATE OF FLOW
Per applicant's information received 3-1-94, it appears that irrigation use was developed approximately 1983 (see June 7, 1983 letter from Anderson & Kelly to school district). Therefore, can process application as exempted from moratorium.
Acres reduced to 5.4 per applicant's 3-1 information but rate left at .22 cfs for typical school excessive flow situation (assumed this would be likely use per similar situations). The rate can be revised downward at field exam time if this is a problem.

Date: 04/20/1994 User-ID: ZIMMERMA Subject: DIVERSION DESCRIPTION
Existing 10" by 145' deep well, drilled 6/83, by Stevens & Sons, with pump.

Audite: 10/01/93 WERNER 02/18/94 LESTER 04/20/94 ZIMMERMA 04/21/94 ZIMMERMA
10/06/94 SCURTIS

SEBGWMA WELL INVENTORY

Owners Name Independant School district (Liberty Elemntary)

Address Steve Mabe, 405 Collins Rd, Boise Id. 83205

Telephone 338-3420

W.R. Number 63-12062

Location: T 3N R 2E S 25 1/4 SW 1/4 NE

Directions to Well:

North on Broadway, Right on Federal way, left on
Bergeson St, left on law school on corner of law +
Bergeson. Well on North side of School underground.
Between temp rooms.

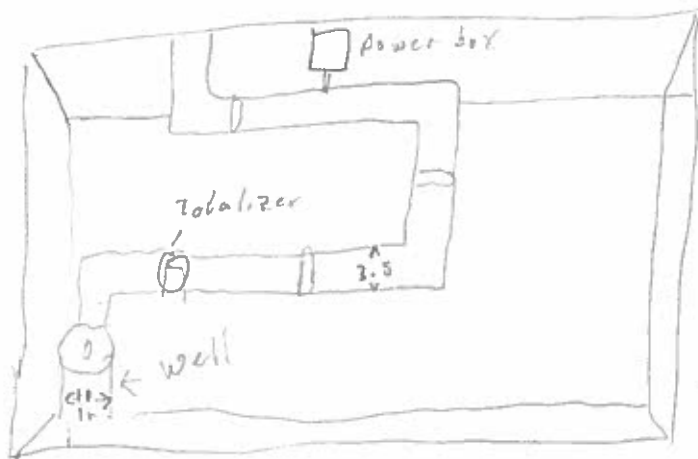
Diversion Unit Data:

Motor Brand Franklin HP 2.5 Serial # _____ Model: 23611-26006

Pump Brand Franklin Serial # _____

Pipeline Discharge Size 3.5 in

System Diagram:



Narrative:

~~84.5~~ ^{Ignore} gal/min

102 gal/min taken from flow meter (totalizer)

Measurements

Measuring equipment Pressure off sprinklers

Serial # N/A

Results:

Notes:

12 sprinklers

8 are I-25 50 psi	7.8 GPM	=	62.4 GPM
4 are PRBDAE 50 psi	9.6 GPM	=	38.4 GPM
			<u>100.8 GPM</u>

Maps, Photographs - See Attached:

Yes

No

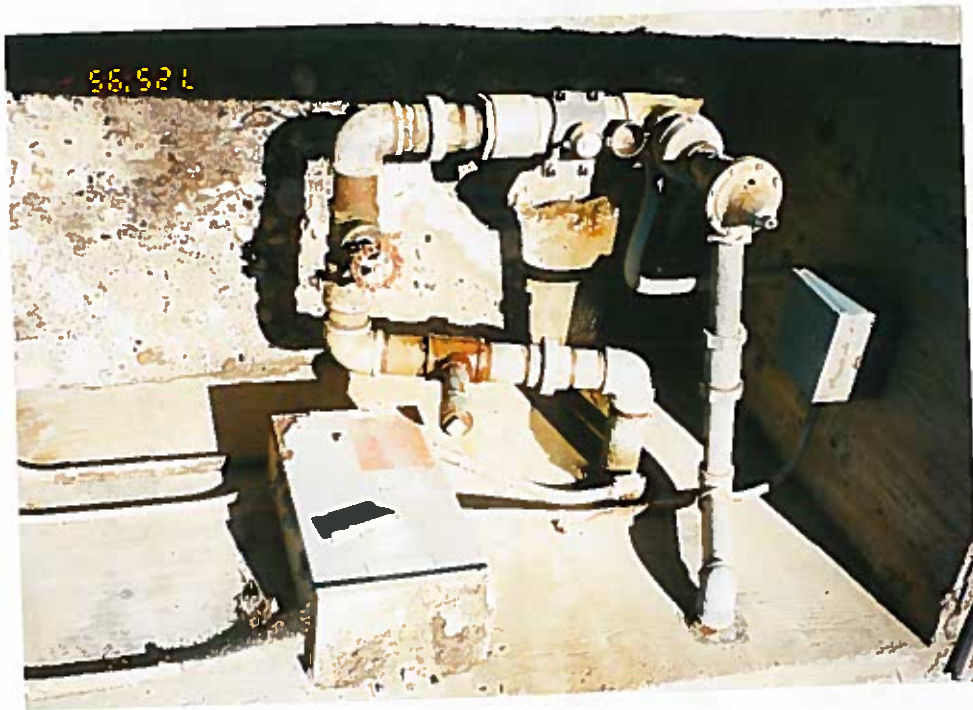
Craig L. Guston EdWR Intern
 Inspectors Name and Title

7-28-98
 Date

WR# 63-12062

Liberty Elementary

well pump is set underground.



LIBERTY
 62.4
 + 38.4
100.8 GPM

Model

I-25, I-31* - 3 1/2" Pop-up (9 cm)

Dimensions

- Overall height: 7 7/8" (20 cm)
- 1" female NPT or BSP inlet
- Exposed diameter: 2" (5 cm)

Operating Specifications

- Discharge rate: 3.8 to 20.2 gpm (0,86 to 4,59 m³/hr; 14,4 to 76,5 l/min)
- Radius: 40' to 65' (12,2 to 19,8 m)
- Pressure range: 40 to 80 psi (2,8 to 5,5 bars; 275 to 551 kPa)

Warranty

- 5-year exchange, not prorated

8 x 7.8 = 62.4 GPM

* Metric model number

I-25 Performance Chart

Nozzle	PSI	Radius ft.	GPM	Precip. in./hr. ■ ▲
1	40	40'	3.8	.23 .26
	50	41'	4.3	.25 .28
	60	42'	4.7	.26 .30
	70	43'	5.1	.27 .31
2	40	42'	4.4	.24 .28
	50	43'	4.8	.25 .29
	60	45'	5.3	.25 .29
	70	46'	5.6	.25 .29
3	40	48'	6.6	.28 .32
	50	49'	7.0	.28 .32
	60	49'	7.5	.30 .35
	70	50'	7.9	.30 .35
4	40	48'	6.7	.28 .32
	50	49'	7.8	.31 .36
	60	51'	8.7	.32 .37
	70	52'	9.2	.33 .38
5	50	53'	9.6	.33 .38
	60	54'	10.8	.36 .41
	70	55'	11.5	.37 .42
	80	56'	12.1	.37 .43
6	50	56'	10.5	.32 .37
	60	57'	11.5	.34 .39
	70	58'	12.4	.35 .41
	80	59'	13.3	.37 .42
7	50	60'	13.2	.35 .41
	60	62'	14.1	.37 .41
	70	62'	15.0	.38 .43
	80	63'	15.9	.39 .45
8	50	62'	16.6	.42 .48
	60	64'	18.1	.43 .49
	70	64'	19.3	.45 .52
	80	65'	20.2	.46 .53

Data represent test results in zero wind. Adjust for local conditions. Radius may be reduced up to 30% with nozzle retaining screw. (This may alter the uniformity of the spray pattern.)
 ■ Denotes square spacing.
 ▲ Denotes equilateral triangular spacing.

I-31 Performance Chart

Nozzle	Pressure Bars	kPa	Radius m	Flow m ³ /hr. U/min	Precip. mm/hr. ■ ▲
1	2,8	275	12,2	0,86 14,4	5,8 6,7
	3,4	344	12,5	0,98 16,3	6,3 7,2
	4,1	413	12,8	1,07 17,8	6,5 7,5
	4,8	482	13,1	1,16 19,3	6,7 7,8
2	2,8	275	12,8	1,00 16,7	6,1 7,0
	3,4	344	13,1	1,09 18,2	6,3 7,3
	4,1	413	13,7	1,20 20,1	6,4 7,4
	4,8	482	14,0	1,27 21,2	6,5 7,5
3	2,8	275	14,6	1,50 25,0	7,0 8,1
	3,4	344	14,9	1,59 26,5	7,1 8,2
	4,1	413	14,9	1,70 28,4	7,6 8,8
	4,8	482	15,2	1,79 29,9	7,7 8,9
4	2,8	275	14,6	1,52 25,4	7,1 8,2
	3,4	344	14,9	1,77 29,5	7,9 9,2
	4,1	413	15,5	1,98 32,9	8,2 9,4
	4,8	482	15,9	2,09 34,8	8,3 9,6
5	3,4	344	16,2	2,18 36,3	8,4 9,9
	4,1	413	16,5	2,45 40,9	9,1 10,5
	4,8	482	16,8	2,61 43,5	9,3 10,7
	5,5	551	17,1	2,75 45,8	9,4 10,9
6	3,4	344	17,1	2,38 39,7	8,2 9,5
	4,1	413	17,4	2,61 43,5	8,7 10,0
	4,8	482	17,7	2,82 46,9	9,0 10,4
	5,5	551	18,0	3,02 50,3	9,3 10,8
7	3,4	344	18,3	3,00 50,0	9,0 10,4
	4,1	413	18,9	3,20 53,4	9,0 10,4
	4,8	482	18,9	3,41 56,8	9,5 11,0
	5,5	551	19,2	3,61 60,2	9,8 11,3
8	3,4	344	18,9	3,77 62,8	10,6 12,2
	4,1	413	19,5	4,11 68,5	10,8 12,5
	4,8	482	19,5	4,38 73,1	11,5 13,3
	5,5	551	19,8	4,59 76,5	11,7 13,5

Data represent test results in zero wind. Adjust for local conditions. Radius may be reduced up to 30% with nozzle retaining screw. (This may alter the uniformity of the spray pattern.)
 ■ Denotes square spacing.
 ▲ Denotes equilateral triangular spacing.

Note: Precipitation rates shown in the Performance Charts are for reference only. Actual rates should be calculated. Performance data are derived from tests that conform to ASAE Standard S398.1. See page 3 for complete ASAE Certification Statement.

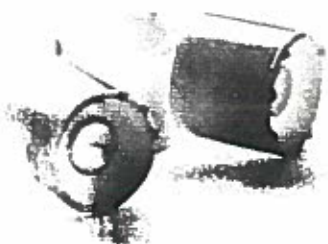
PRODUCT IDENTIFICATION

EXAMPLE: **I - 25 - ADS - 07**

MODEL I-25, I-31* = 3 1/2" Pop-up	FEATURES ADV, 36V, ADS, 36S, ARV, 3RV, ARS, 3RS	OPTIONS XX = Complete Set of Nozzles and Stators 01 - 08 = Factory-Installed Nozzle Number
---	---	---

Key to Features:

- | | |
|--|--|
| ADV = Adjustable with check valve | ARV = Adjustable, Reclaimed Water, with check valve |
| 36V = Full-circle with check valve | 3RV = Full-circle, Reclaimed Water, with check valve |
| ADS = Adjustable with check valve and stainless steel riser | ARS = Adjustable, Reclaimed Water, with stainless steel riser |
| 36S = Full-circle with check valve and stainless steel riser | 3RS = Full-circle, Reclaimed Water, with stainless steel riser |



Rotors

PK50A, 60A, 70A, 80A SERIES

PK50AF (FULL CIRCLE) Maximum Recommended Operating Pressure As Noted

Nozzle	Operating Pressure PSI	Flow GPM	Diameter Coverage (ft.)
B9 9/64	40	3.6	82
	50	4.0	82
	60	4.2	84
	70	4.6	84
*B10 5/32	40	4.7	84
	50	5.2	86
	60	5.7	88
	70	6.1	90
	80	6.5	92
B11 11/64	40	5.8	86
	50	6.4	88
	60	7.0	90
	70	7.4	92
	80	7.8	94

PK60AF (FULL CIRCLE) Maximum Recommended Operating Pressure As Noted

Nozzle	Operating Pressure PSI	Flow GPM	Diameter Coverage (ft.)
B12 3/16	40	6.7	87
	50	7.5	89
	60	8.3	91
	70	9.1	93
	80	9.8	95
B13 13/64	40	7.2	88
	50	8.2	90
	60	9.1	92
	70	10.0	94
	80	10.8	96
*B14 7/32	40	8.5	89
	50	9.6	91
	60	10.6	93
	70	11.6	95
	80	11.9	97
B15 15/64	40	9.8	90
	50	10.5	92
	60	11.8	94
	70	12.7	96
	80	13.3	98

4 →
4 x 9.6 = 38.4 GPM

PK70AF (FULL CIRCLE) Maximum Recommended Operating Pressure As Noted

Nozzle	Operating Pressure PSI	Flow GPM	Diameter Coverage (ft.)
E12 x A11S 3/16 x 11/64	50	12.5	102
	60	13.8	105
	70	15.1	107
	80	16.4	110
	90	17.8	112
E13 x A11S 13/64 x 11/64	50	15.0	110
	60	16.4	113
	70	17.8	117
	80	19.0	120
	90	20.2	122
*E14 x A11S 7/32 x 11/64	50	18.2	114
	60	17.5	120
	70	18.8	123
	80	20.1	126
	90	21.5	128
E16 x A11S 1/4 x 11/64	50	19.0	116
	60	20.3	122
	70	21.7	126
	80	23.0	129
	90	24.3	129

PK80AF (FULL CIRCLE) Maximum Recommended Operating Pressure As Noted

Nozzle	Operating Pressure PSI	Flow GPM	Diameter Coverage (ft.)
E18 x A12S 9/32 x 3/16	60	22.0	114
	70	24.0	120
	80	26.0	126
	90	27.5	128
	100	29.0	130
*E20 x A12S 5/16 x 3/16	65	26.7	126
	70	27.7	133
	80	29.5	136
	90	31.4	141
	100	33.1	142
E22 x A13S 11/32 x 13/64	70	31.5	138
	80	33.5	146
	90	35.7	147
	100	37.5	147
E24 x A13S 3/8 x 13/64	75	35.5	146
	80	36.7	146
	90	38.7	147
	100	40.7	147

PK50AP (PART CIRCLE) Maximum Recommended Operating Pressure As Noted

Nozzle	Operating Pressure PSI	Flow GPM	Radius Coverage (ft.)
B9 9/64	40	3.6	41
	50	4.0	41
	60	4.2	42
	70	4.6	42
*B10 5/32	40	4.7	42
	50	5.2	43
	60	5.7	44
	70	6.1	45
	80	6.5	46
B11 11/64	40	5.8	43
	50	6.4	44
	60	7.0	45
	70	7.4	46
	80	7.8	47

PK60AP (PART CIRCLE) Maximum Recommended Operating Pressure As Noted

Nozzle	Operating Pressure PSI	Flow GPM	Radius Coverage (ft.)
B12 3/16	40	6.7	44
	50	7.5	45
	60	8.3	46
	70	9.1	47
	80	9.8	48
B13 13/64	40	7.1	45
	50	8.1	46
	60	9.1	47
	70	10.1	48
	80	11.1	49
*B14 7/32	40	8.5	46
	50	9.6	47
	60	10.6	48
	70	11.6	49
	80	12.6	50
B15 15/64	40	9.8	47
	50	10.8	48
	60	11.8	49
	70	12.8	50
	80	13.8	51

PK70AP (PART CIRCLE) Maximum Recommended Operating Pressure As Noted

Nozzle	Operating Pressure PSI	Flow GPM	Radius Coverage (ft.)
B14X 7/32	50	10.5	53
	60	11.3	55
	70	12.0	56
	80	12.8	58
	90	13.5	59
B15X 15/64	55	12.5	55
	60	13.0	56
	70	14.0	57
	80	15.0	59
	90	16.0	60
*B16X 1/4	60	14.0	57
	70	15.0	58
	80	16.0	60
	90	17.0	61
B17X 17/64	60	15.7	58
	70	16.8	59
	80	17.8	61
	90	19.0	62
B18X 9/32	65	18.1	59
	70	18.6	60
	80	19.7	62
	90	20.8	63

See Impact Rotary Sprinkler Design Data page for spacing and precipitation rate formulas.

X suffix on nozzle indicates range vane is included.

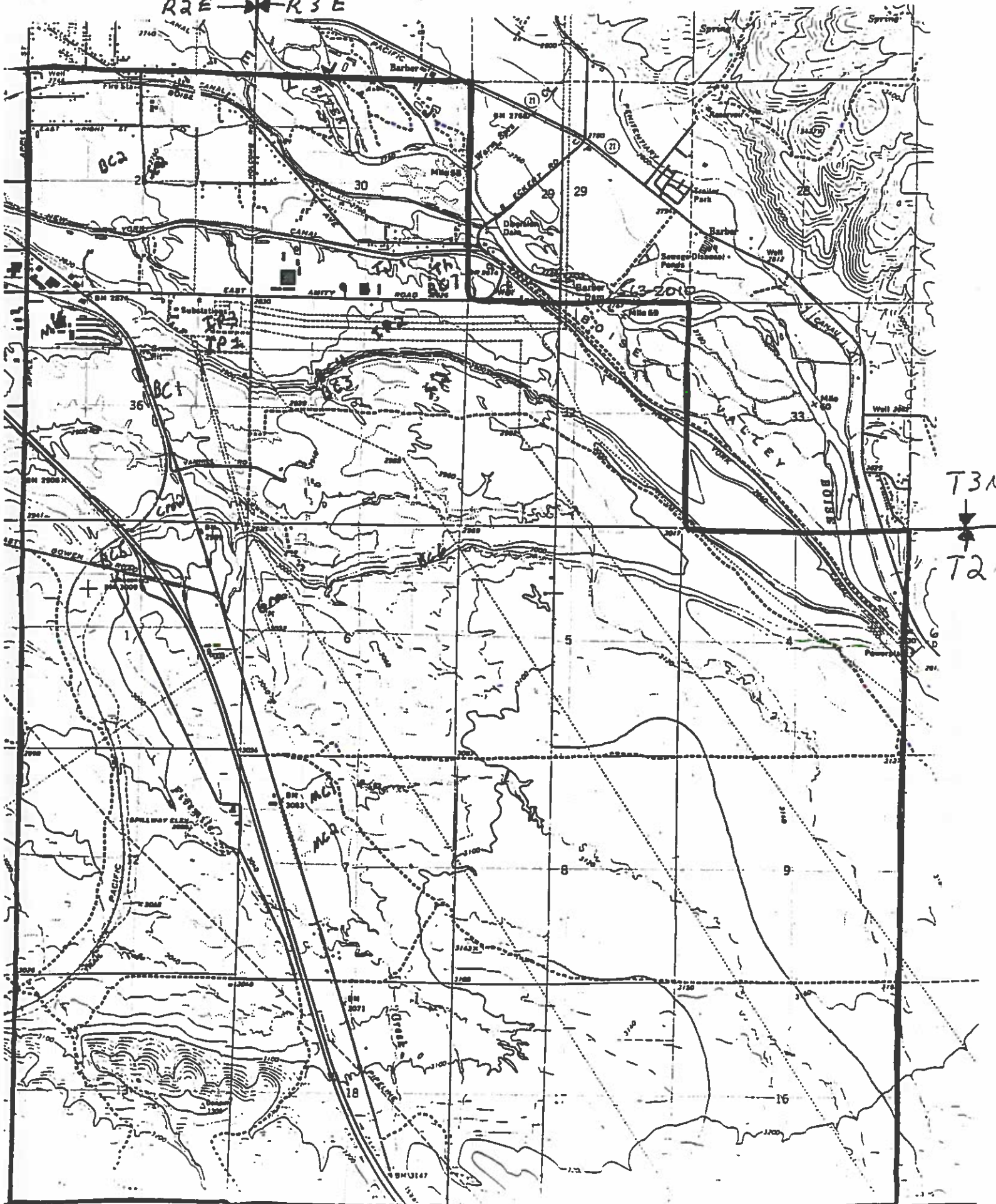
*NOZZLES FURNISHED UNLESS SPECIFIED OTHERWISE

S = Slotted drive nozzle for close-in coverage.

- Standard nozzle (shaded areas on charts) uniform precipitation data developed with Hyperspace™ software is available upon request.

Well location
83-12062

R2E → R3E



Well location

63-10306



7/25/95

PAGE NO.	
-------------	--

LIBERTY WELL

PREPARED BY	
DATE	

1 TOTALIZER METER - 674537
2 FLOW READING - 85 GPM - 102 GPM
3

4 Pump: Franklin Submersible
5 Mod # 2361126006
6 7.5 HP
7 3 Phase
8 rated @ 85 GPM per chart on pump panel
9 10" casing
10
11
12
13
14
15
16
17
18
19
20
21
22
23
24
25
26
27
28

WATER RIGHTS WITHIN THE SEBGWMA WITH MEASUREMENT REQUIREMENT

WR #	Name	Stage	CFS	Measuring Devise	Well Lo
63-03118	IDAHO POWER	License	1.4	OPTION 1	no
63-03197	IDAHO POWER	License	0.51	OPTION 1	no
63-03544	IDAHO POWER	License	2.67	OPTION 1	no
63-03416	TRUS JOIST MACMILLAN	License	0.56	OPTION 1	no
63-07304	THINDERBIRD DEV.	License	0.36		no
63-07199	EMKAY DEV	LICENSE	1.09	OPTION 1	no
63-08006	GRANGER	LICENSE	0.82	OPTION 2	no
63-11546	CROMAN CORP	LICENSE	0.29	OPTION 1	no
63-11610	SIMPLOT	PERMIT	1.1	OPTION 1	YES
63-11566	IND. SCHOOL DIST	PERMIT	0.3	OPTION 1	YES
63-12062	IND. SCHOOL DIST	PERMIT	0.22	OPTION 1	no
63-07577	BOISE WATER CORP	LICENSE	2.01	OPTION 1	YES
63-08236	BOISE WATER CORP	LICENSE	3.63	OPTION 1	YES
63-08992	BOISE WATER CORP	PERMIT	7	OPTION 1	no
L63-08992	BOISE WATER CORP	LICENSE	1.97	OPTION 1	no
63-09029	BOISE WATER CORP	PERMIT	4	OPTION 1	no
63-11541	BOISE WATER CORP	PERMIT	2.9	OPTION 1	YES
63-11949	BOISE WATER CORP	PERMIT	1.1	OPTION 1	YES
63-10208	MICRON TECHNOLOGY	LICENSE	0.61	OPTION 1	YES
63-11293	MICRON TECHNOLOGY	PERMIT	2.25	OPTION 1	YES