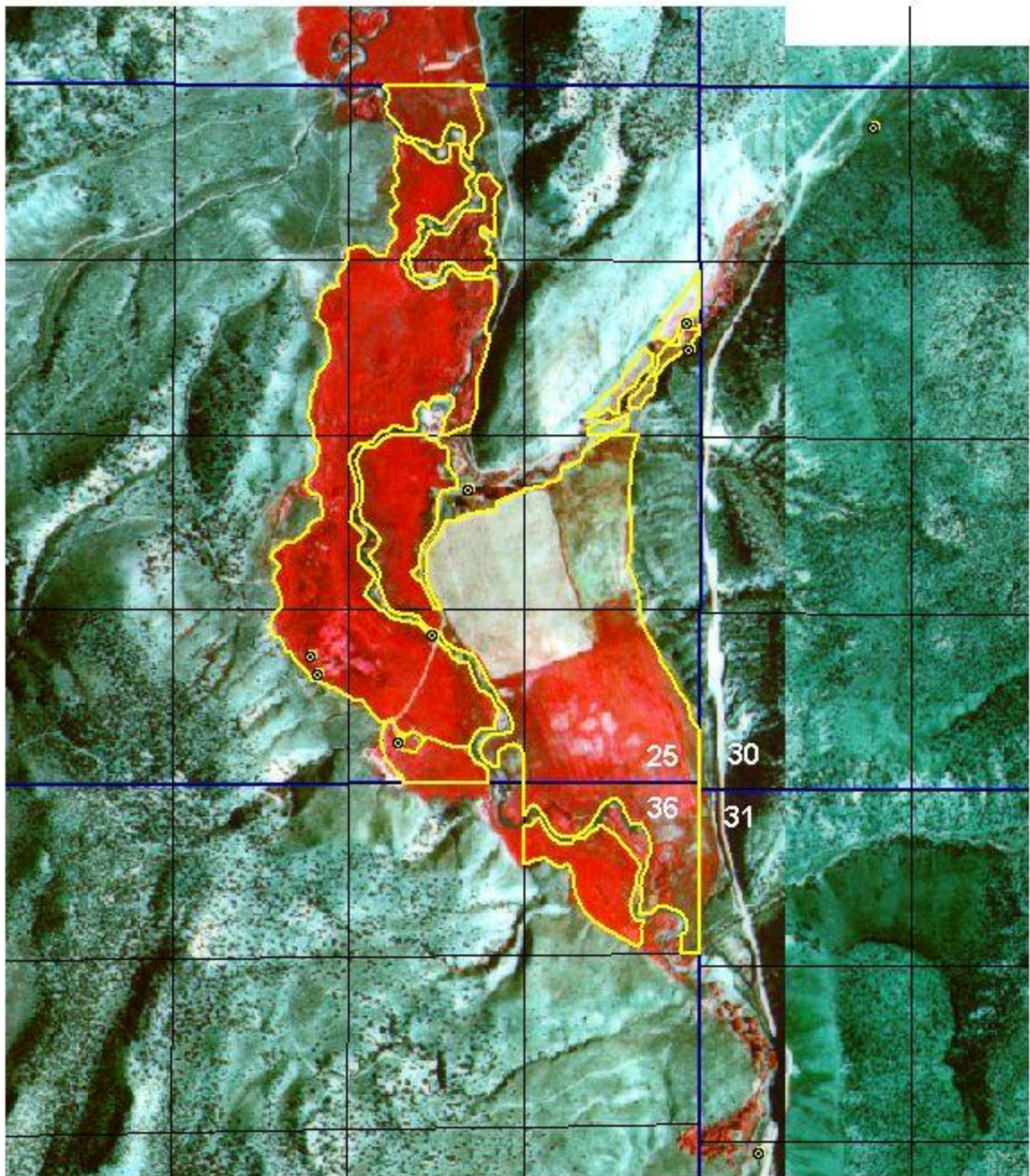


45-151, 45-7173A, 45-7451, & 45-10248



0 1320 2640 3960 Feet

RECOMMENDED PLACE OF USE
DATA ENTRY ON OCT. 29, 2002
TWP 15S, RNG 21E, SEC. 25 & 36



- Point of diversion
- Place of use
- Quarter-quarter lines
- Section lines

Gis Place of Use Presentation
1987/1988 Napp Photography
Prepared by Jeanie Robertson